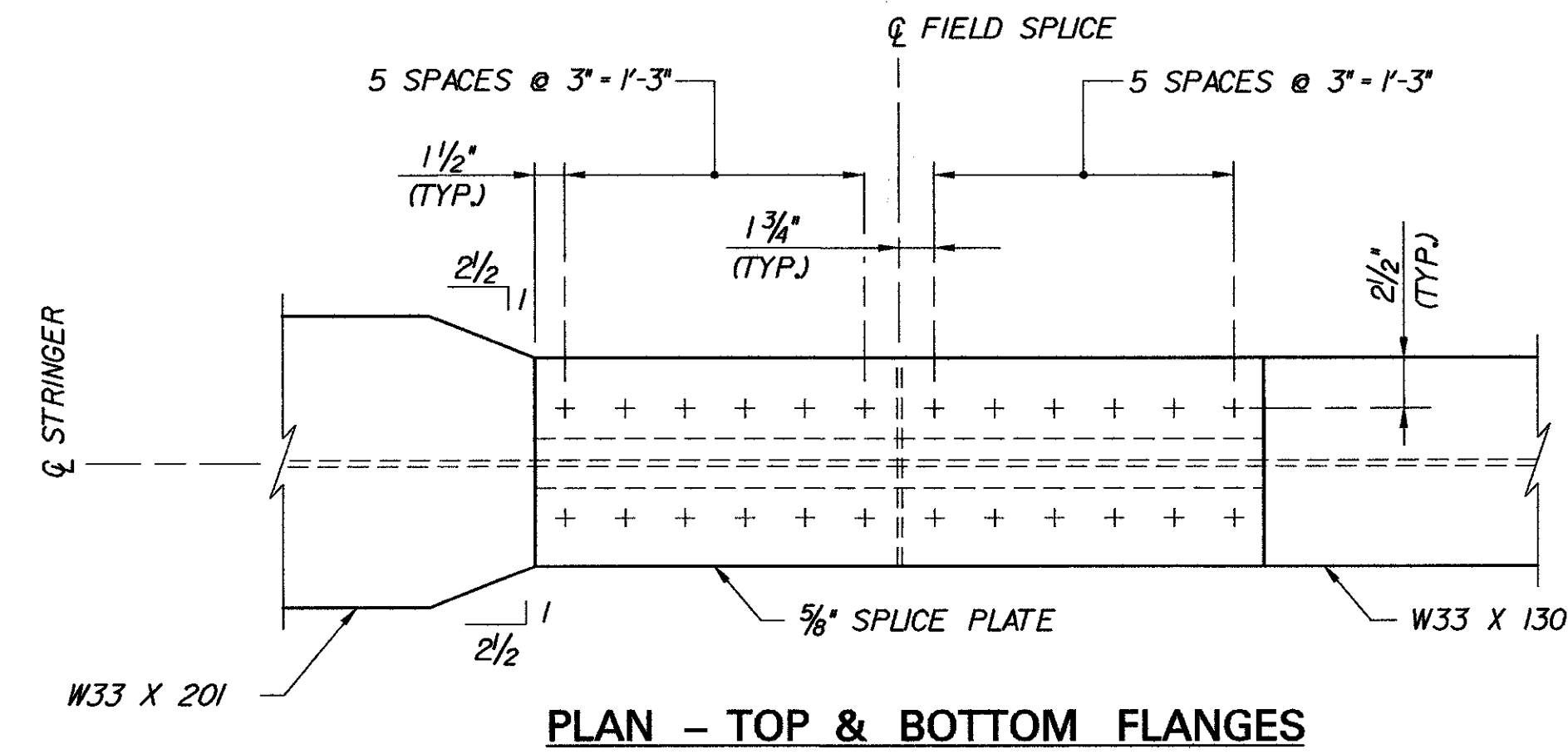
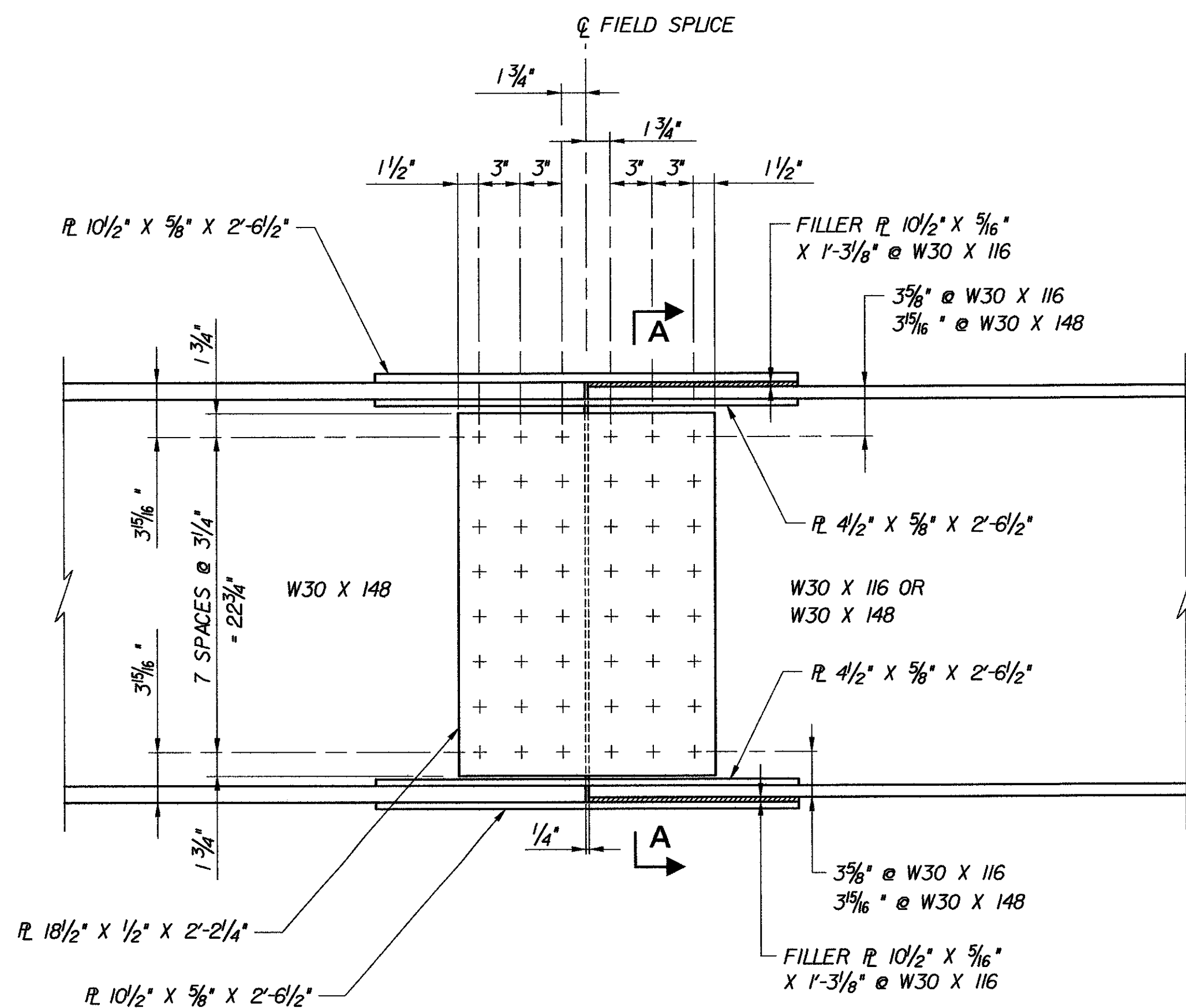


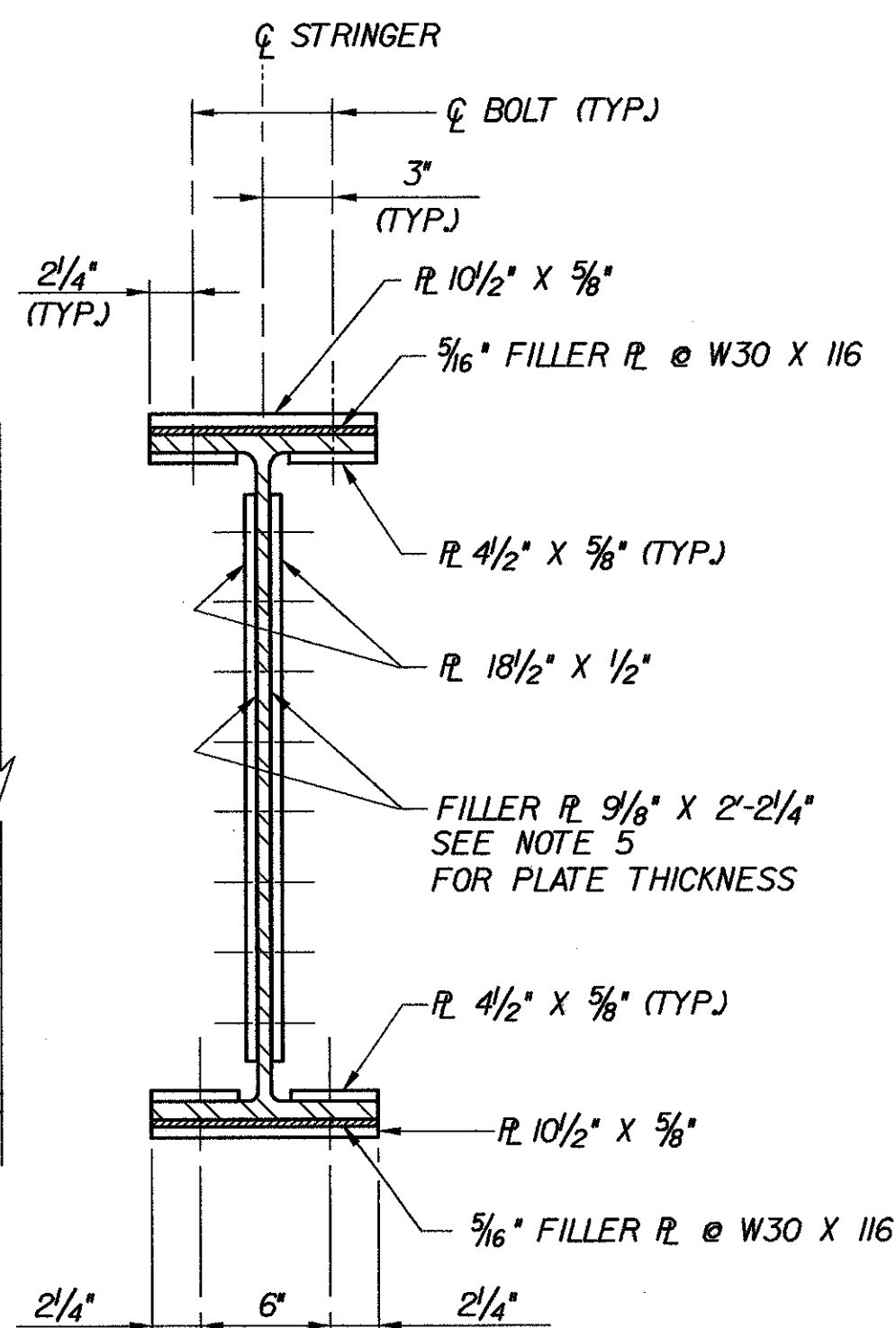
PLAN - TOP & BOTTOM FLANGES



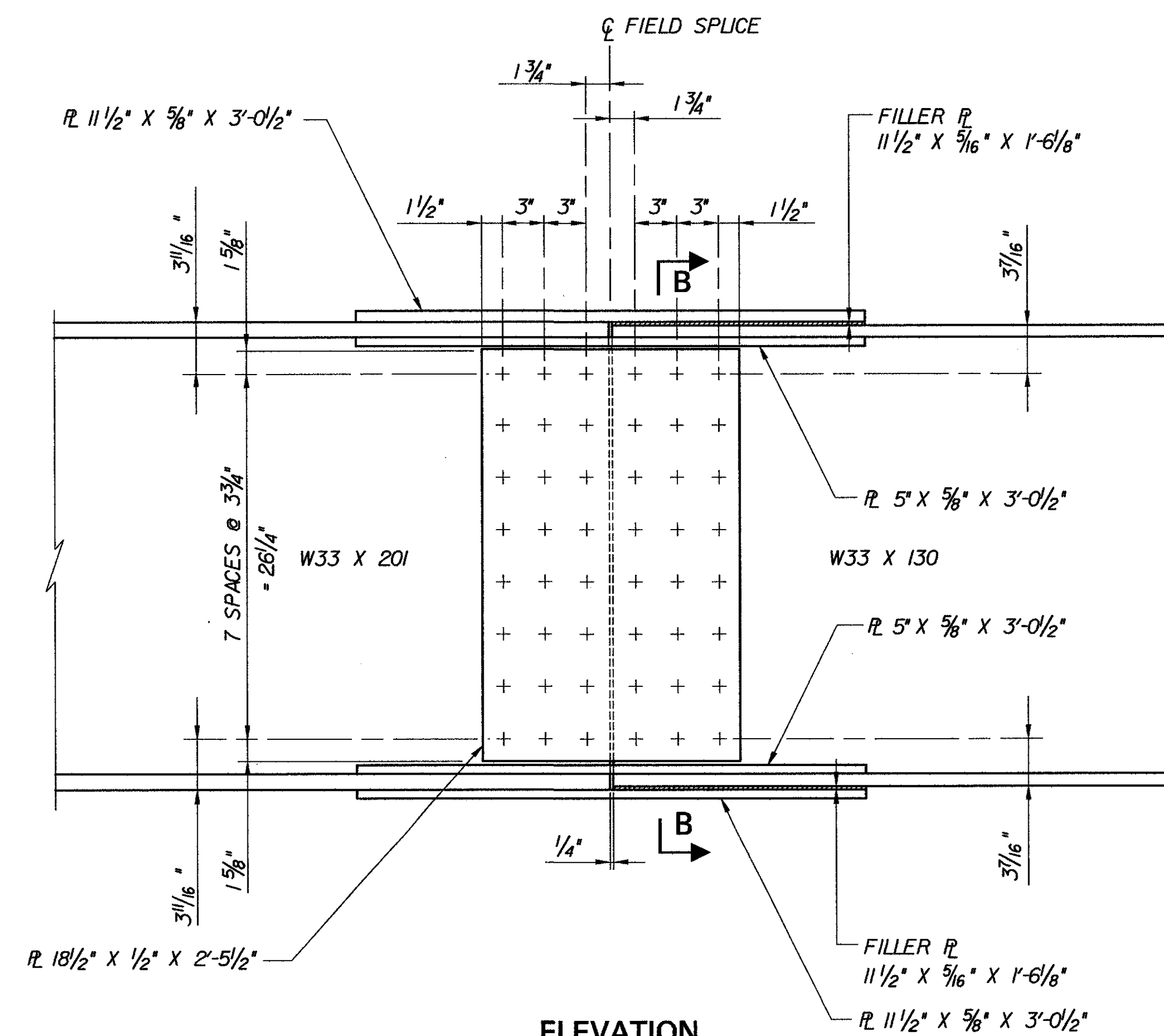
PLAN - TOP & BOTTOM FLANGES



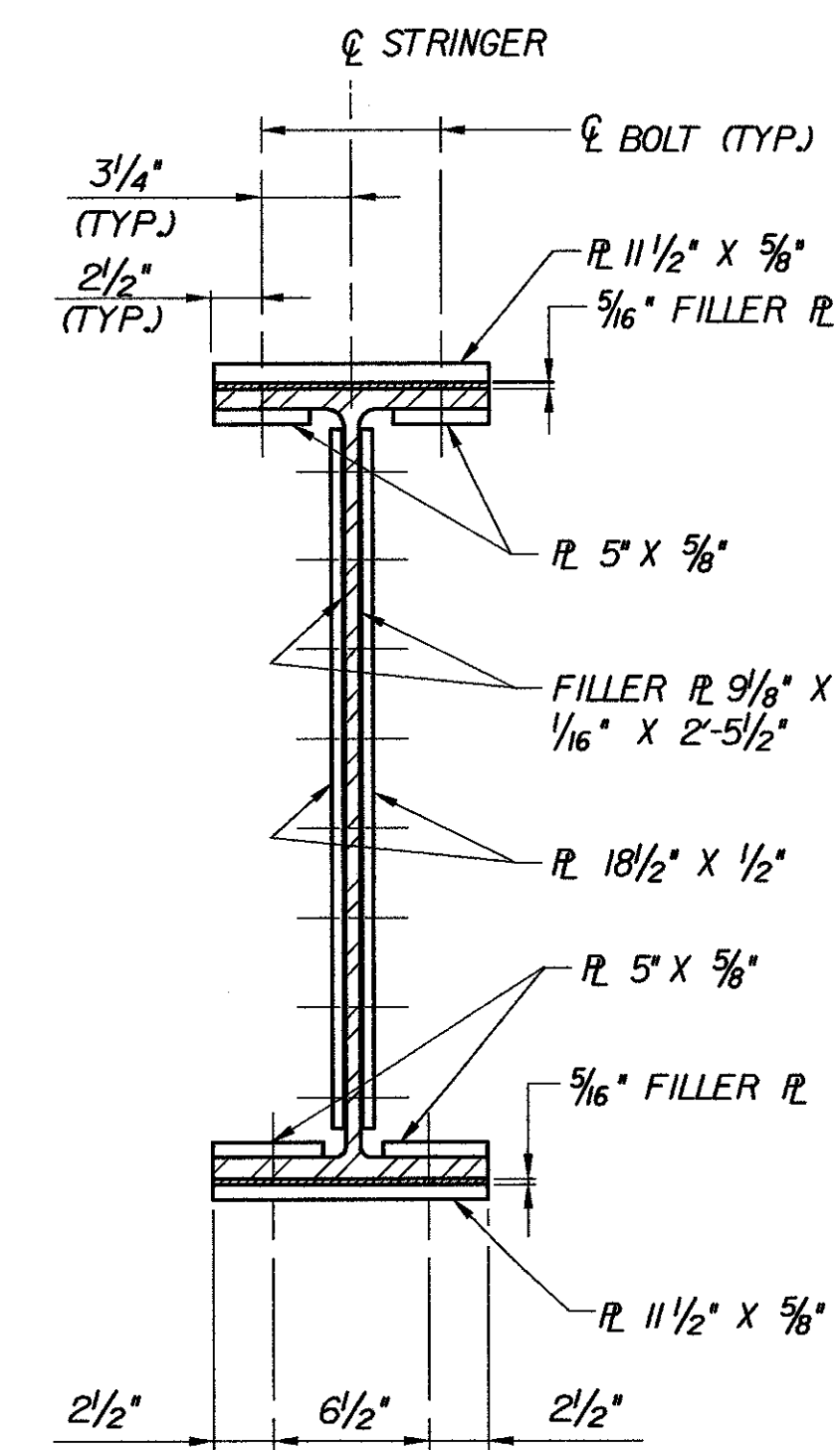
ELEVATION



SECTION A-A



ELEVATION



SECTION B-B

FIELD SPLICE @ BR 43N

NOT TO SCALE

FIELD SPLICE @ BR 43S

NOT TO SCALE

NOTES:

- BOLTS SHALL BE 7/8" DIA. AASHTO M164 TYPE 3 HIGH STRENGTH BOLTS IN 1/16" DIA. HOLES. NUTS AND WASHERS SHALL ALSO CONFORM TO AASHTO M164. BOLT LENGTHS SHALL BE SUCH THAT THE BOLT THREADS ARE EXCLUDED FROM THE SHEAR PLANE.
- ALL FIELD SPLICE CONNECTIONS SHALL BE "SLIP CRITICAL" WITH A CLASS B SURFACE (BLAST CLEAN SURFACE) FOR THE CONTACT SURFACES OF BOLTED PARTS.
- STEEL FOR SPLICE & FILLER PLATES SHALL BE AASHTO M270 GRADE 50W (ASTM A709, GRADE 50W).
- HOLES FOR FIELD SPLICES SHALL BE DRILLED IN THE SHOP WHILE STRINGERS ARE ASSEMBLED TO FIT BEARING ELEVATIONS.
- PROVIDE 3/32" THICK PLATE @ EACH SIDE OF W30 X 116 AND 1/16" THICK PLATE @ EACH SIDE OF W30 X 148 FOR SPLICES AT BR 43N SPAN 2.
- ALL FLANGE AND WEB SPLICE PLATES SHALL BE CHARPY V-NOTCH TESTED IN ACCORDANCE WITH SECTION 714.01 OF THE SPECIFICATIONS.

STATE OF VERMONT
AGENCY OF TRANSPORTATION

Town Of	MIDDLESEX-BOLTON	Bridge No.	
Highway No.	I-89	Log Sta.	
		Surv. Sta.	

TYPICAL ROLLED BEAM SPLICE DETAILS

Designed By	M.H. GALLO	Drawn By	N.J. HOYT
Checked By	Date	Bridge Design Supervisor	
K.L. JAMES	10/99	J.P. HALSTEAD	Date 10/99

PROJECT	MIDDLESEX-BOLTON	PROJECT NO.	IM-089-2(26)
TVGA CAD Drawing No.	127fsl.dgn	Date	10/99
Bridge Sheet No.	C-19	Sheet	19 of 307

Hayashi Corporation
Consulting Engineers