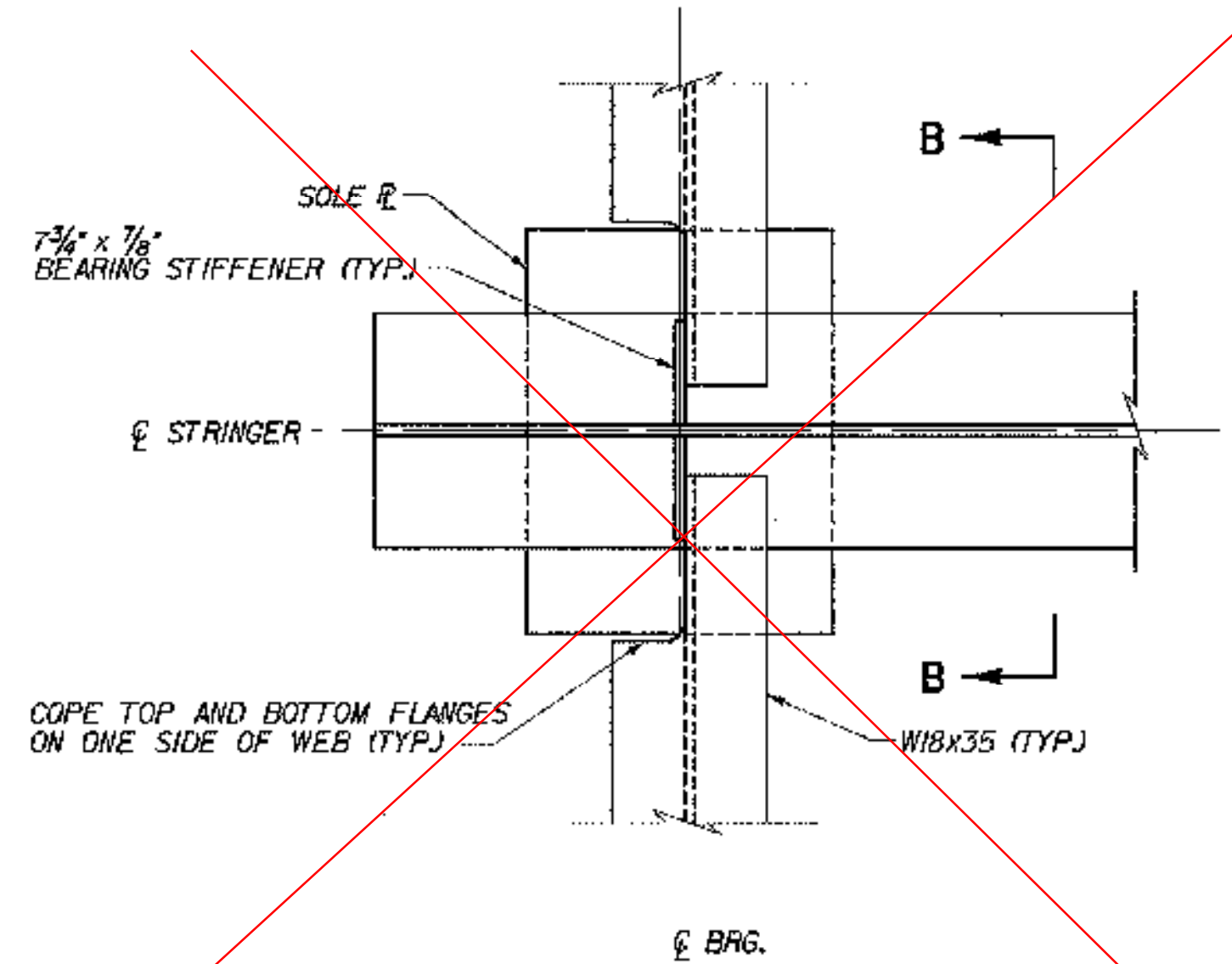
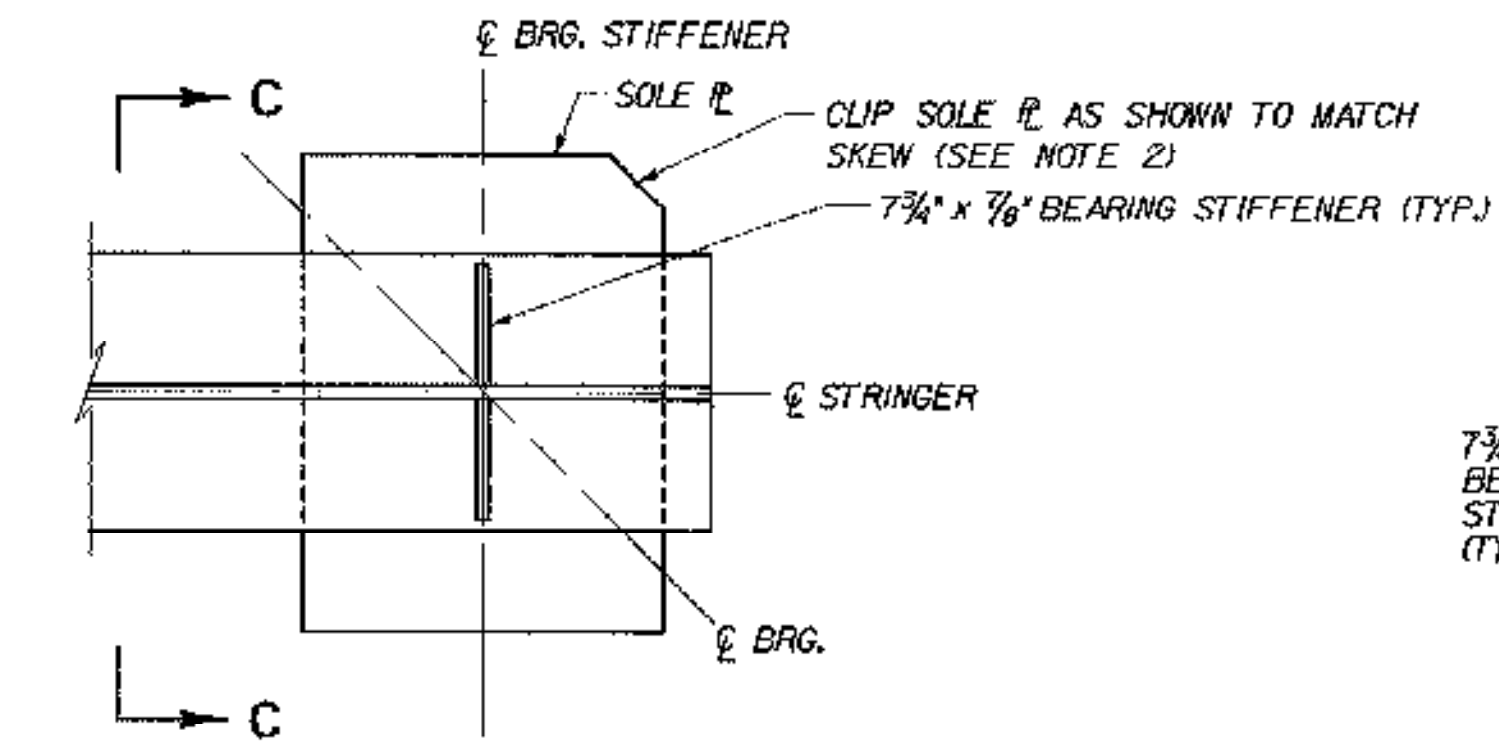


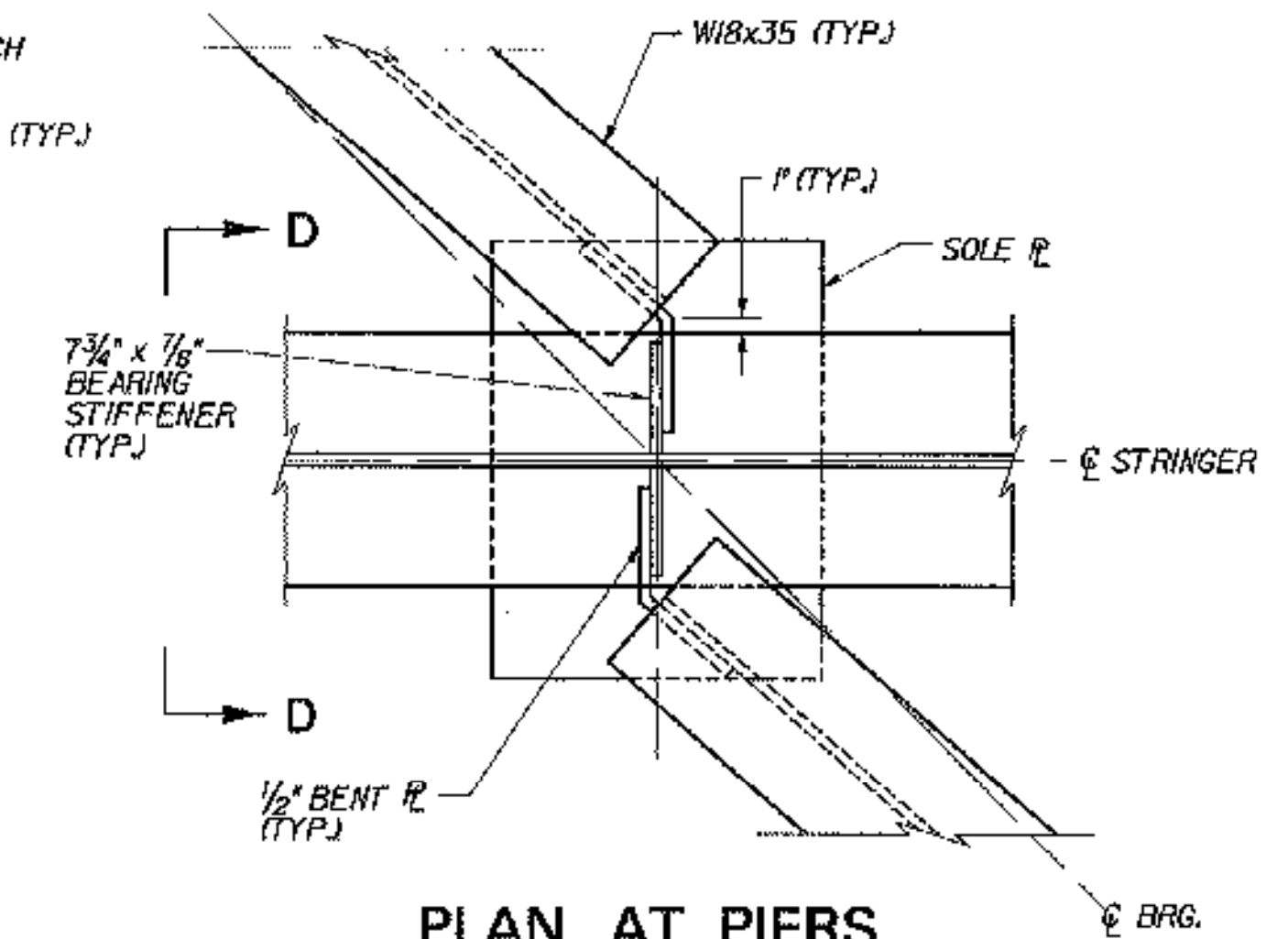
PLAN AT EXPANSION ABUTMENTS
N.T.S.



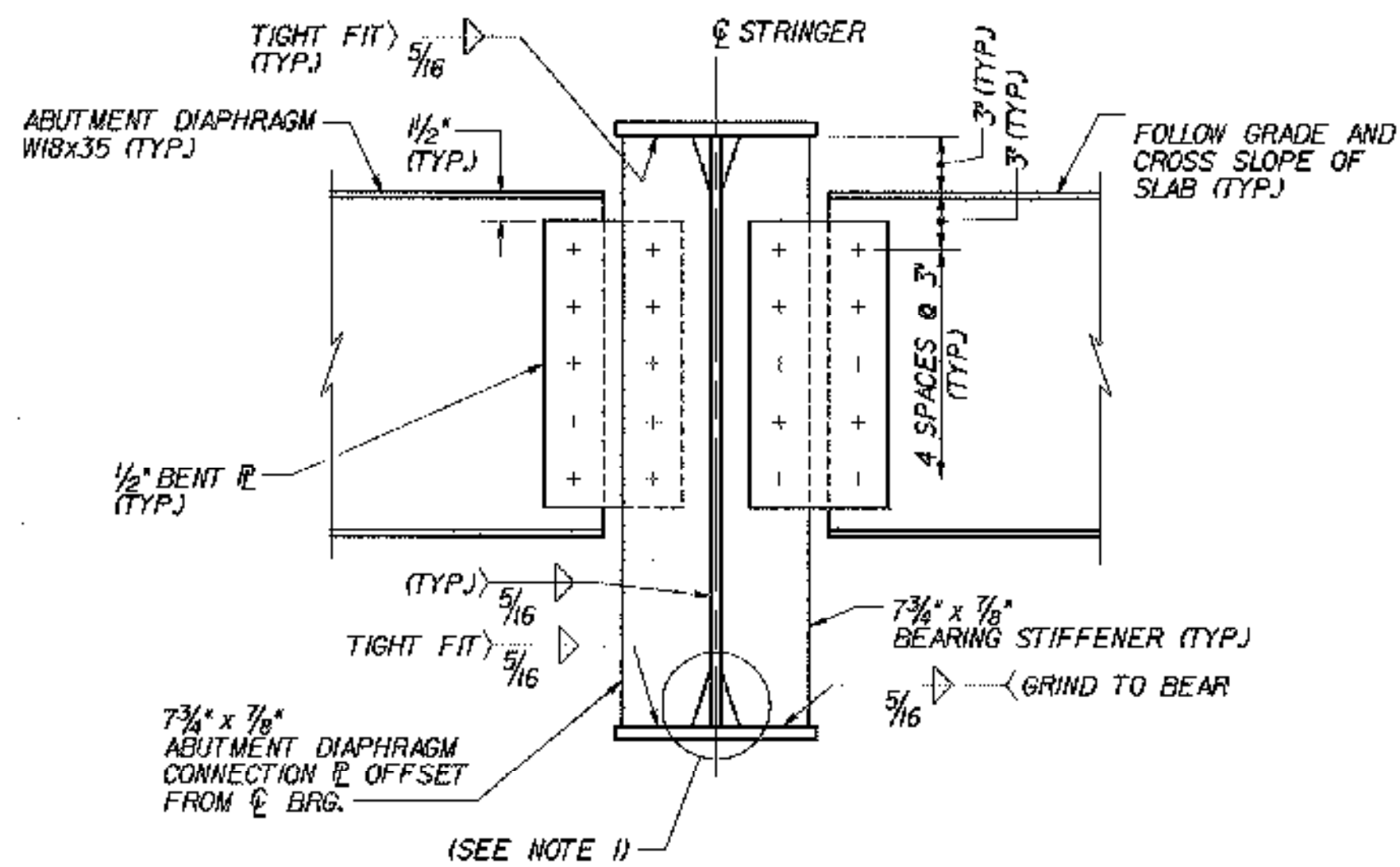
PLAN AT PIERS WITH EXPANSION JOINTS
(PIER 1 AT BR51 N&S)
N.T.S.



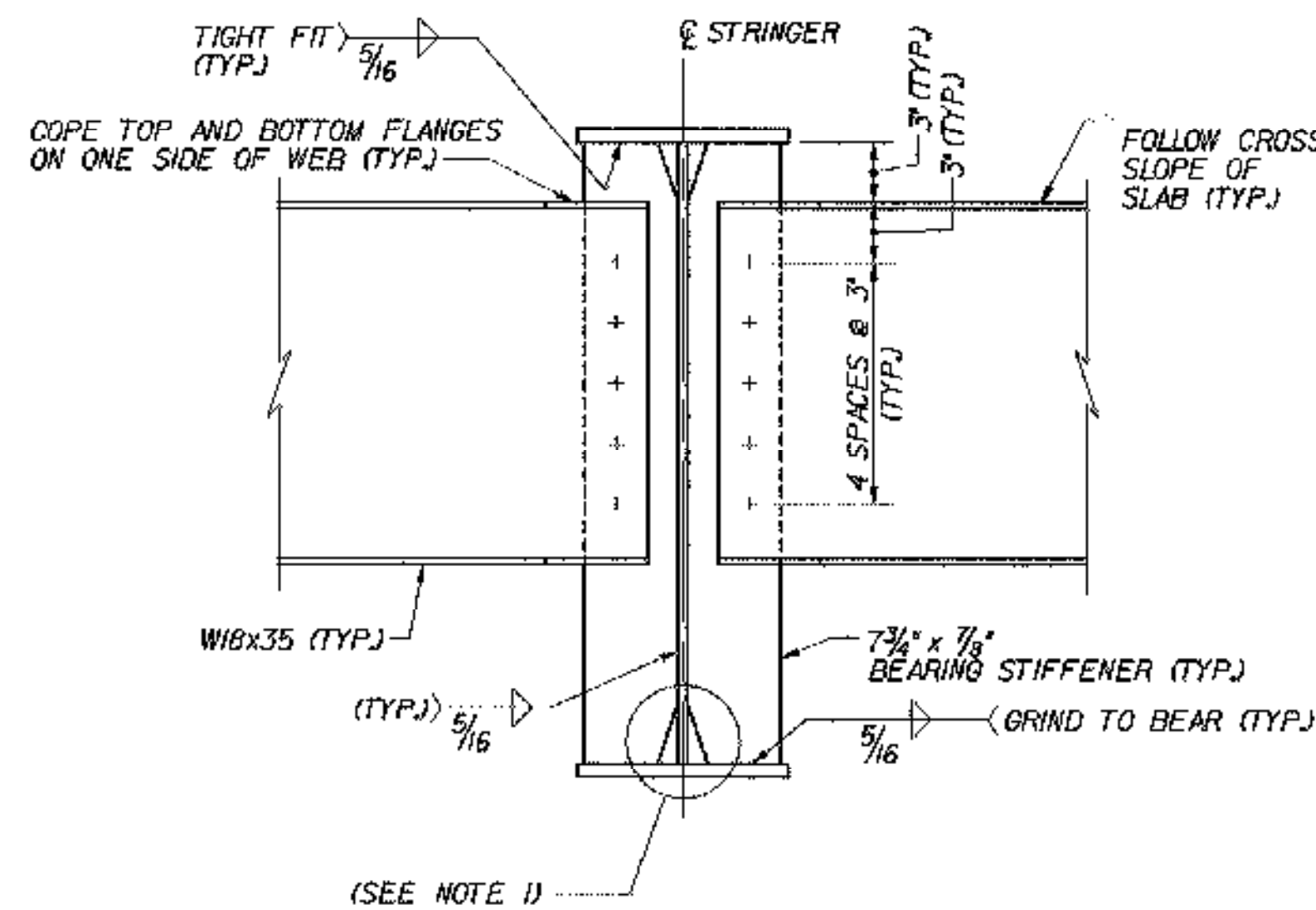
PLAN AT FIXED ABUTMENTS
N.T.S.



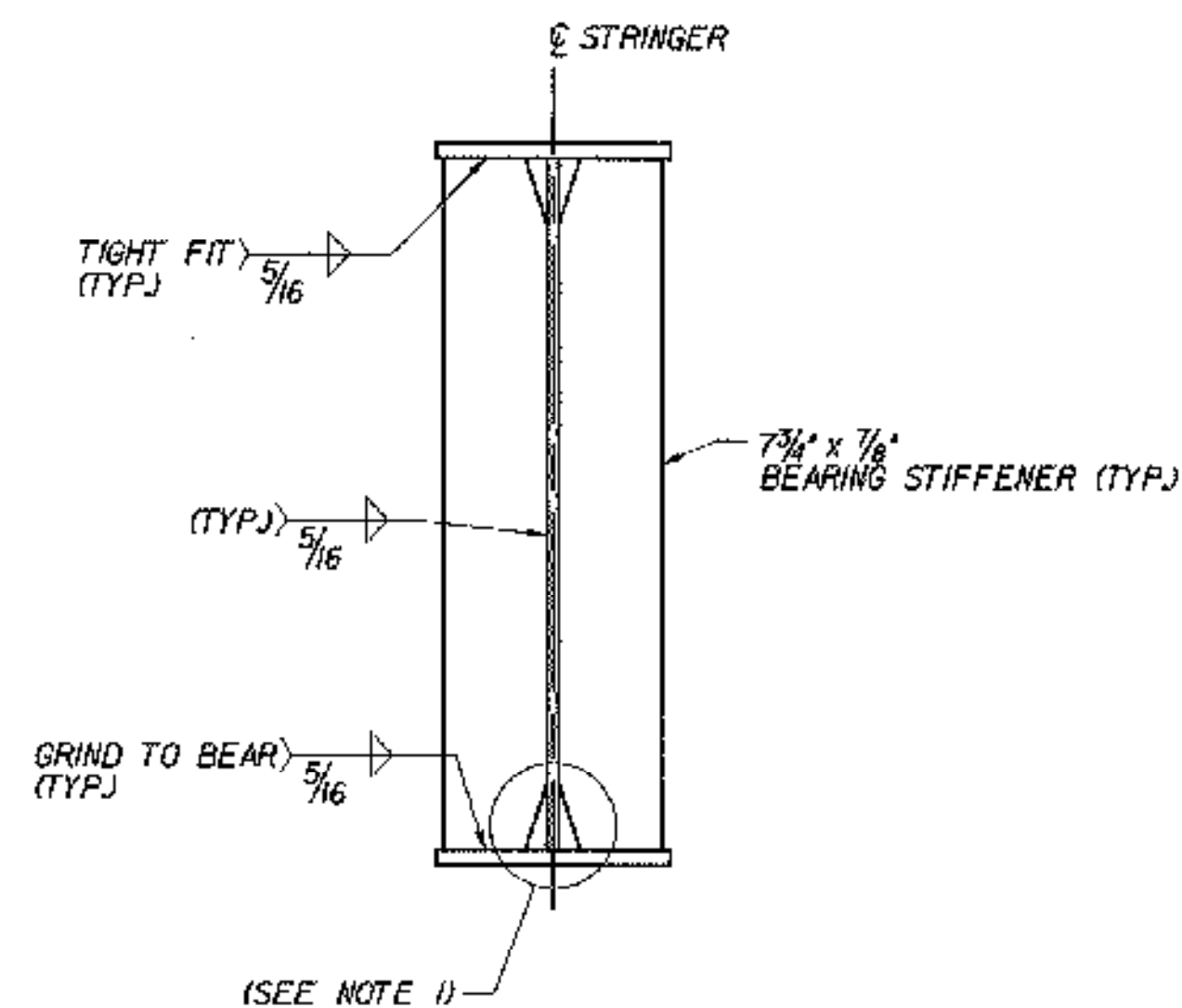
PLAN AT PIERS
N.T.S.



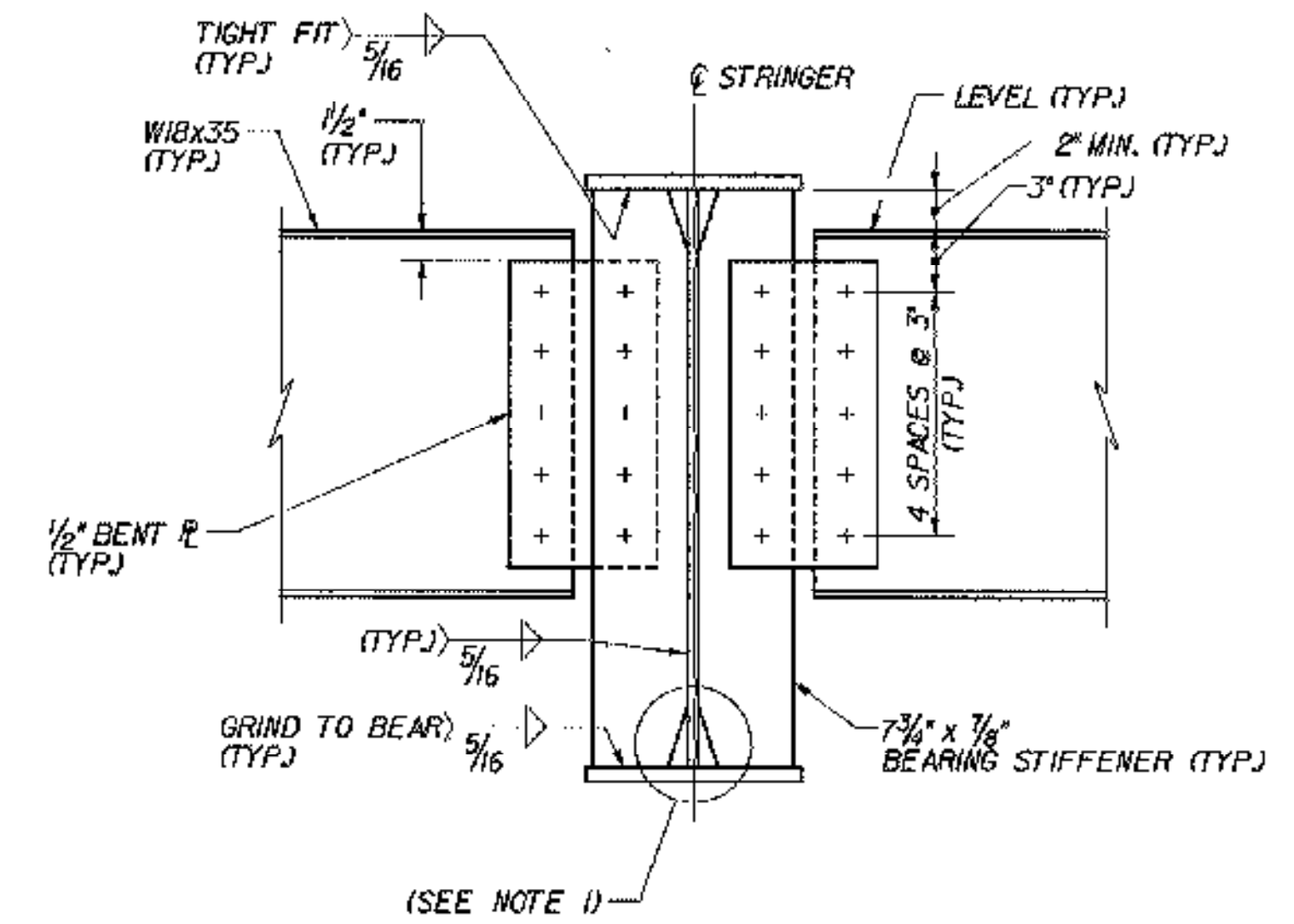
ELEVATION A-A
N.T.S.



ELEVATION B-B
N.T.S.



ELEVATION C-C
N.T.S.



ELEVATION D-D
N.T.S.

NOTES:

- FOR TYPICAL WELD TERMINATION AND COPING DETAIL, SEE TYPICAL PLATE GIRDER DETAILS (2 OF 2), BRIDGE SHEET C-18.
- FOR DETAILS AND DIMENSIONS OF SOLE PLATE CLIP, SEE BEARING DETAILS ON BRIDGE SHEETS C-21 THROUGH C-25.
- FOR TABLE OF TOP FLANGE COPE DIMENSION "A", SEE TYPICAL PLATE GIRDER DETAILS (2 OF 2), BRIDGE SHEET C-18.
- THE TOP AND BOTTOM EDGES OF BEARING STIFFENERS SHALL BE CUT AT RIGHT ANGLES TO THE WEB.

STATE OF VERMONT AGENCY OF TRANSPORTATION

Town Of	MIDDLESEX-BOLTON	Bridge No.	
Highway No.	I-89	Log Sta.	
		Surv. Sta.	

TYPICAL PLATE GIRDER DETAILS (1 OF 2)

Designed By	P.W. SZUSTAK	Drawn By	R.A. BOTZENHART
Checked By	J.P. HALSTEAD	Bridge Design Supervisor	J.P. HALSTEAD
Date	10/99	Date	10/99
PROJECT	MIDDLESEX-BOLTON	PROJECT NO.	IM-089-2(26)
TVGA CAD Drawing No.	g1rardet	Date	10/99
Bridge Sheet No.	C-17	Sheet	17 of 307