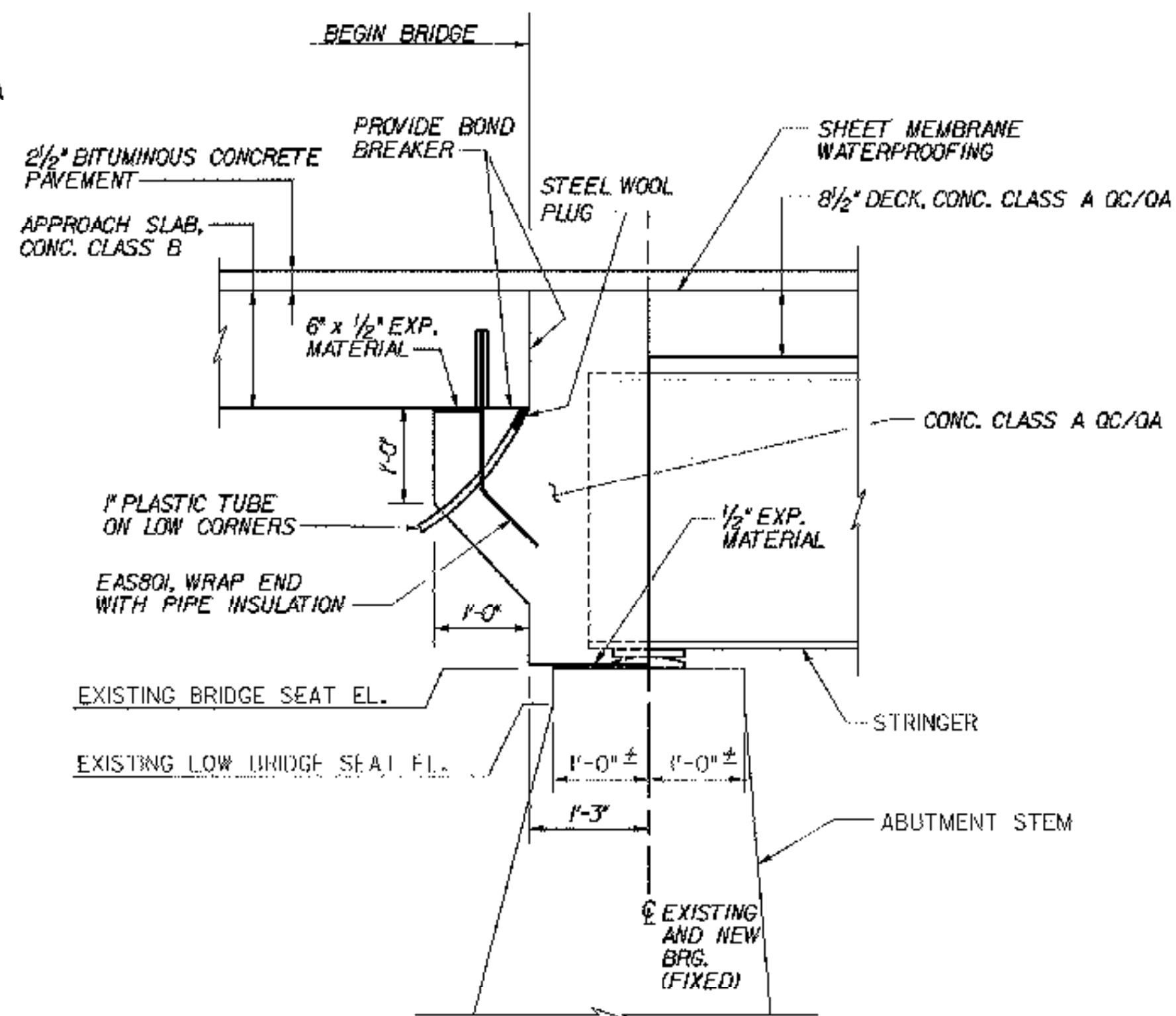
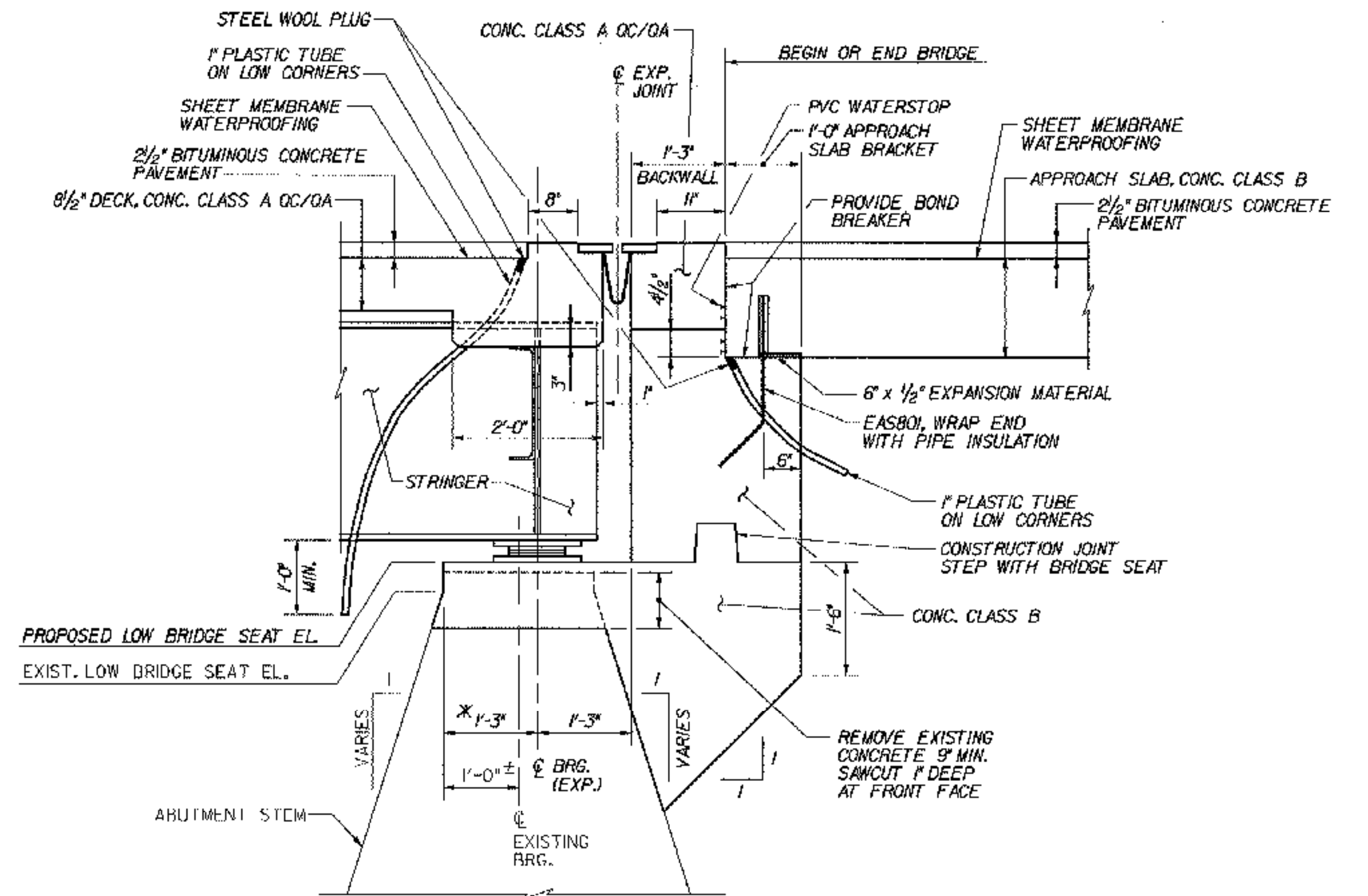


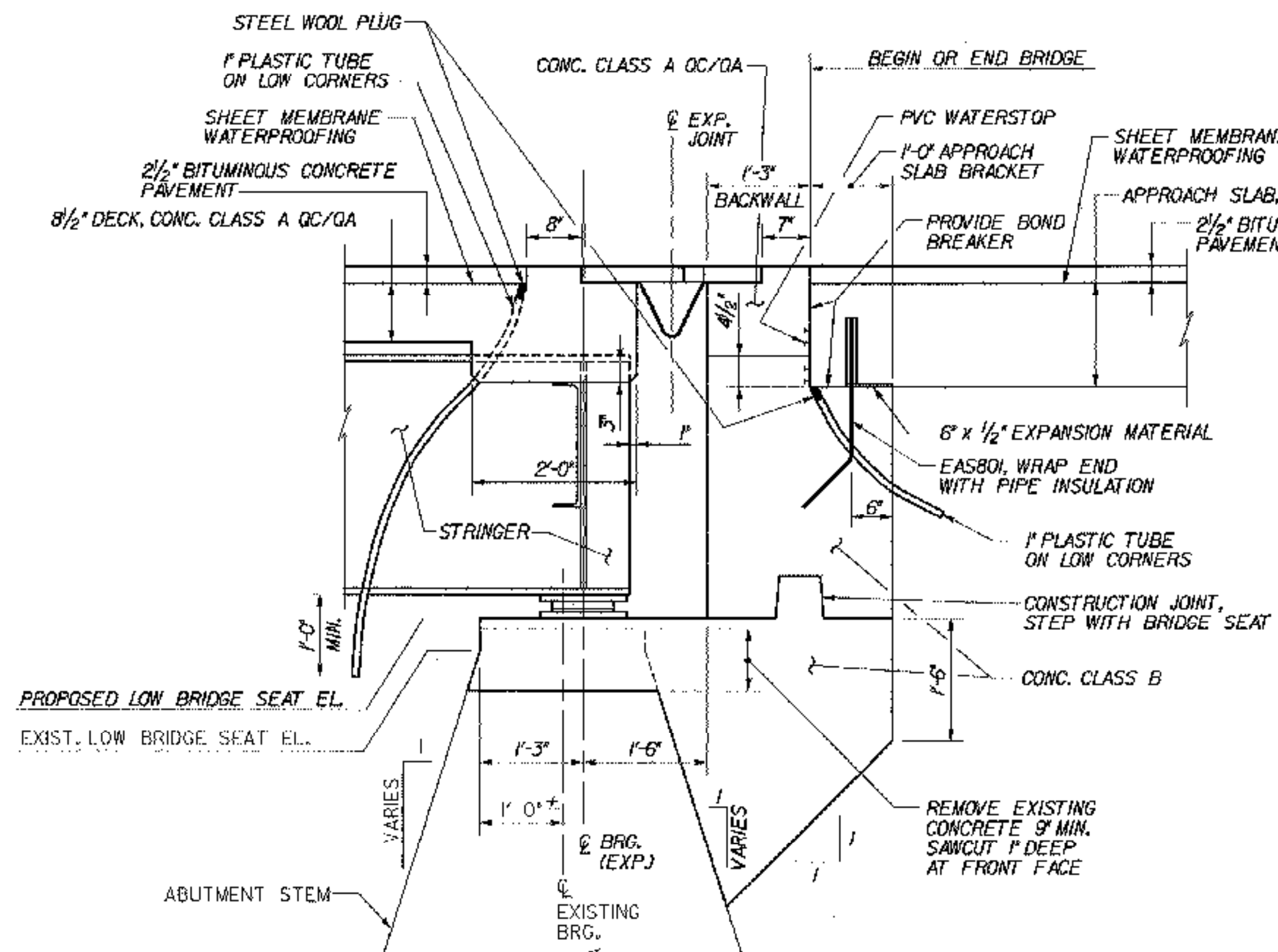
**TYPICAL FIXED ABUT. DETAIL, TYPE "C"**  
(NORMAL TO  $\bar{C}$  BEARING)  
SCALE:  $\frac{3}{4}$ "=1'-0"



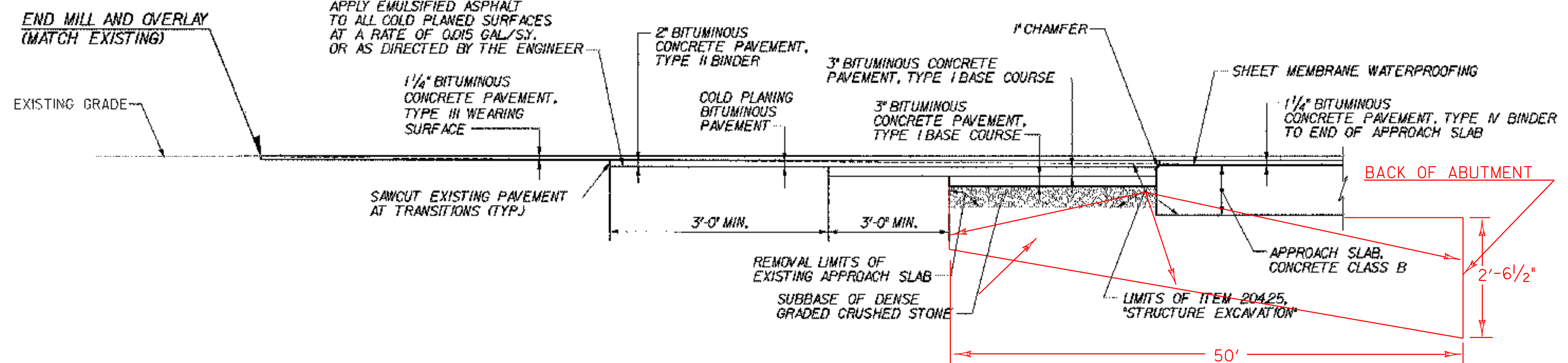
**FIXED ABUT. DETAIL, TYPE "C"**  
(NORMAL TO  $\bar{C}$  BEARING)  
(BR 49N&S ONLY)  
SCALE:  $\frac{3}{4}$ "=1'-0"



**TYPICAL EXP. ABUT. DETAIL, TYPE "H"**  
(NORMAL TO  $\bar{C}$  BEARING)  
SCALE:  $\frac{3}{4}$ "=1'-0"



**TYPICAL EXP. ABUT. DETAIL, FINGER JOINT**  
(NORMAL TO  $\bar{C}$  BEARING)  
SCALE:  $\frac{3}{4}$ "=1'-0"



**APPROACH PAVEMENT TRANSITION DETAIL**  
N.T.S.

1. NEW AREA IS ALL DENSE GRADED CRUSHED STONE
2. NEW AREA IS ALSO THE LIMITS OF 204.25 STRUCTURE EXCAVATION
3. TYPICAL FOR ALL BRIDGES

(NOT SHOWN - END OF DECK SLAB AT PIER  
SIMILAR TO END OF DECK SLAB AT TYPICAL  
EXP. ABUT. DETAIL, TYPE "H")

**TYPICAL EXP. PIER DETAIL, TYPE "H"**

**STATE OF VERMONT  
AGENCY OF TRANSPORTATION**

Town Of	MIDDLESEX-BOLTON	Bridge No.	
Highway No.	1-89	Log Sta.	
		Surv. Sta.	

**TYPICAL END OF DECK SLAB DETAILS**

Designed By	P.W. SZUSTAK	Drawn By	R.A. BOTZENHART
Checked By	Date	Bridge Design Supervisor	
J.P. HALSTEAD	10/99	J.P. HALSTEAD	Date 10/99

PROJECT	MIDDLESEX-BOLTON	PROJECT NO.	IM-089-2(26)
---------	------------------	-------------	--------------

TYGA CAD Drawing No.	dsabdet	Date	10/99
Bridge Sheet No.	C-15	Sheet	15 of 307