

GPS CONTROL POINTS

TRAV. 1

**VTGS SURVEY DISK STAMPED
"PAPPY AZ MK. 1997"**

N = 78677.96340
E = 60239.82600
Z = 510.696

STATION DESCRIPTION

TO REACH THIS MARK FROM THE VT ROUTE 100 BRIDGE OVER I-89 AT EXIT 10 IN THE TOWN OF WATERBURY, TRAVEL NORTHBOUND ON I-89 FOR 3.1 MI (5.0 KM) TO THE MARK LOCATED ON THE RIGHT IN THE TOP OF A MASSIVE LEDGE OUTCROP. IT IS 0.15 MI (0.24 KM) NORTHWEST OF THE I-89 NORTHBOUND BRIDGE OVER U.S. ROUTE 2 AND 24M (78.7 FT) NORTHWEST OF MILEMARKER 66.80.

THIS MARK IS 7.1M (23.3 FT) NORTHEAST OF AND ABOUT 3 M (9.8 FT) HIGHER THAN THE NORTHEAST EDGE OF PAVEMENT OF I-89 NORTHBOUND. THE MARK IS 15.7 M (51.5 FT) SOUTHWEST OF THE RIGHT-OF-WAY FENCE, 6.3 M (20.7 FT) SOUTH SOUTHWEST OF A 25 CM PINE AND 0.3 M (1.0 FT) SOUTHWEST OF A FIBERGLASS WITNESS POST.

TRAV. 2

**VTGS SURVEY DISK STAMPED
"PAPPY 1997"**

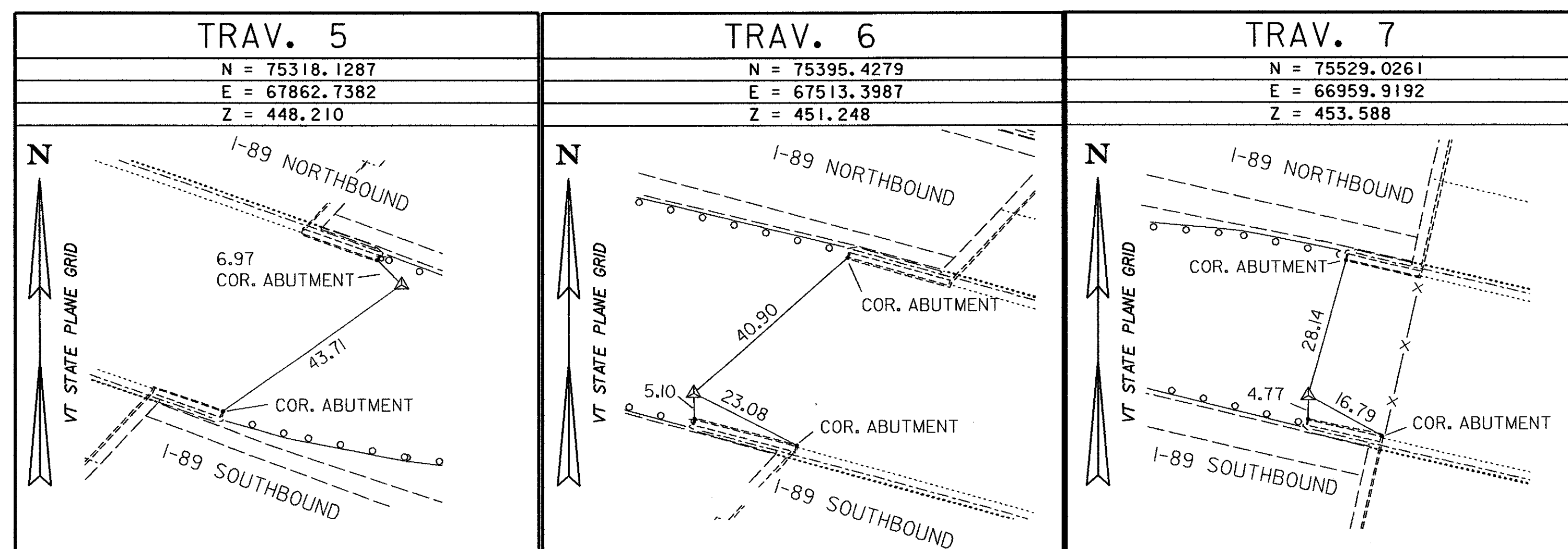
N = 75885.77410
E = 66219.1800
Z = 528.577

STATION DESCRIPTION

TO REACH THIS MARK FROM THE VT ROUTE 100 BRIDGE OVER I-89 AT EXIT 10 IN THE TOWN OF WATERBURY, TRAVEL NORTHBOUND ON I-89 FOR 1.8 MI (2.9KM) TO THE MARK LOCATED ON THE SOUTHEAST END OF A MASSIVE ROCK CUT. IT IS POSITIONED ON THE RIGHT AT THE TOP OF THIS ROCK CUT, RESTING JUST NORTHWEST OF MILE MARKER 65.50.

THIS MARK IS 5.5 M (18.0 FT) NORTHEAST OF SOUTHWEST FACE OF ROCK CUT, 59.7 M (195.9FT) SOUTHWEST OF RIGHT-OF-WAY FENCE, 47.9 M (157.2 FT) SOUTHWEST OF A 30 CM PINE, 4.38 (14.37 FT) EAST OF A DRILL HOLE WITH CHISELED LINES, 2.35 M (7.71FT) NORTHWEST OF A DRILL HOLE AND 0.3 M (1.0FT) SOUTHWEST OF A FIBERGLASS WITNESS POST.

TRAVERSE TIES



ALIGNMENT TIES

N = E =	N = E =	N = E =	N = E =	N = E =

NOTES:

I. VAOT TO PROVIDE ALIGNMENT TIES DURING CONSTRUCTION.

DATUM	
VERTICAL	NAVD 88
HORIZONTAL	NAD 83/92

STATE OF VERMONT AGENCY OF TRANSPORTATION	
Town Of MIDDLESEX-BOLTON	Bridge No. 48&49
Highway No. I-89	Log Sta. Surv. Sta.
I-89 OVER LITTLE RIVER (48) / I-89 OVER TH 7 (49)	
CONTROL POINT TIES (48N&S AND 49N&S)	
Designed By V.A.O.T.	Drawn By V.A.O.T.
Checked By V.A.O.T.	Bridge Design Supervisor J.P. HALSTEAD
Date 10/99	Date 10/99
PROJECT MIDDLESEX-BOLTON	PROJECT NO. IM-089-2(26)
TVGA CAD Drawing No. 48&49tie	Date 10/99
Bridge Sheet No. C-11	Sheet 11 of 307