

GPS CONTROL POINTS

**TRAV. 1**

**VTGS SURVEY DISK STAMPED  
" BASELINE WEST 1970 "**

N = 42565.15840  
E = 10049.883  
Z = 528.05

**STATION DESCRIPTION**

TO REACH FROM THE INTERSECTION OF US ROUTE 2, STATE STREET, AND BAILEY AVENUE IN MONPIELIER, GO WEST ALONG US ROUTE 2 FOR 1.9 MILES (3.1 KM) TO THE MARK ON THE NORTHEAST SIDE OF ROUTE 2.

THE MARK IS SET IN THE TOP OF A 6 INCH BY 6 INCH CONCRETE MONUMENT FLUSH WITH GROUND SURFACE.

IT IS 60.5 FEET (18.4 M) NORTHEAST OF THE CENTERLINE OF US ROUTE 2, 119 FEET (36.3 M) NORTH NORTHWEST OF A CLUMP APPLE, 50.5 FEET (15.4 M) SOUTHEAST OF A BRACE POST IN THE 189 R.O.W. FENCE, 106 FEET (32.3 M) NORTHWEST OF A 4 INCH BIRCH IN 189 R.O.W. FENCE, 1.8 FEET (0.5 M) SOUTHWEST OF A CARSONITE WITNESS POST IN I-89 R.O.W. FENCE.

**TRAV. 2**

**CGS BENCHMARK DISK STAMPED  
" B 24 1935"**

N = 43272.95550  
E = 8735.81100  
Z = 525.842

**STATION DESCRIPTION**

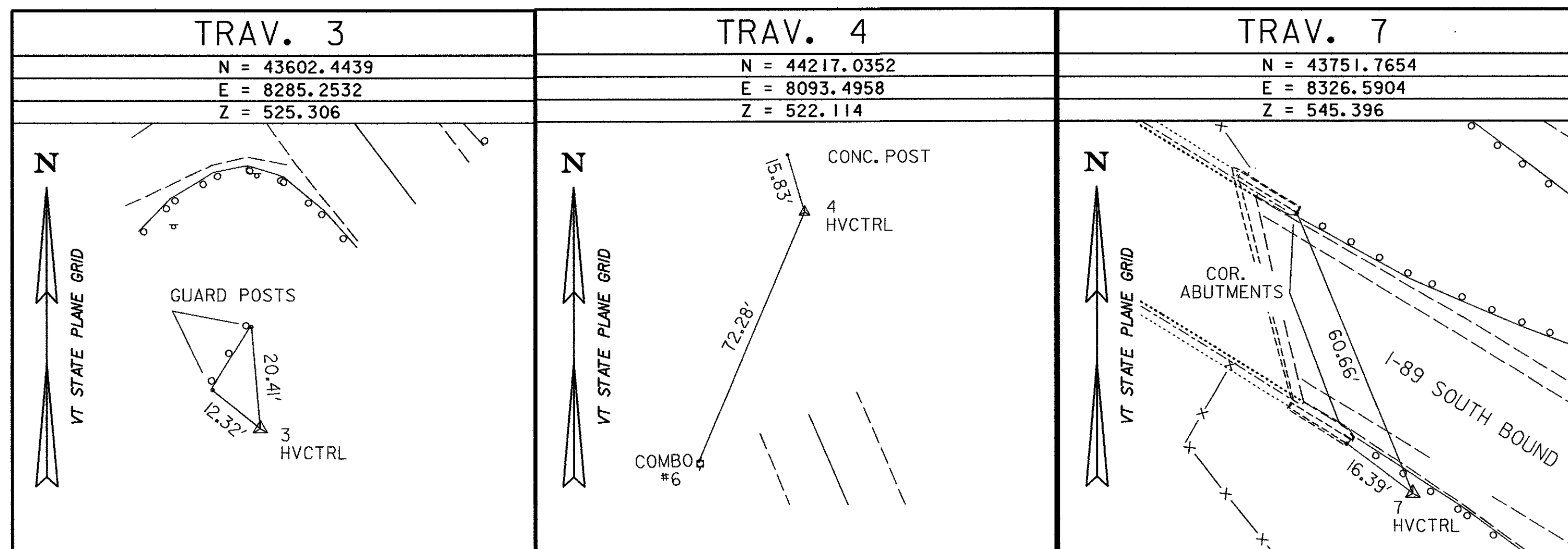
TO REACH FROM THE JUNCTION OF US ROUTE 2 AND VERMONT 100B IN MIDDLESEX, PROCEED 3.85 MI (6.20 KM) EAST ON ROUTE 2 AND THE MARK ON THE RIGHT.

THE MARK IS SET IN THE TOP OF A 6 INCH BY 6 INCH CONCRETE MONUMENT, PROJECTING 6 INCHES ABOVE GROUND SURFACE.

IT IS 90.0 FEET (27.4 M) SOUTHEAST OF A 20 INCH DIA. CAST IRON CULVERT, 42 FEET (12.8 M) SOUTHWEST OF THE CENTERLINE OF US ROUTE 2, 31.8 FEET (9.7 M) NORTHEAST OF THE CORNER OF A 6 FOOT (1.8 M) CHAINLINK FENCE, 12.6 FEET (3.8 M) SOUTHWEST OF THE SOUTHWEST RAIL, 6.5 FEET (2.0 M) NORTHEAST OF THE RAILROAD R.O.W. FENCE 0.8 FEET (24.4 CM) NORTHEAST OF A FIBERGLASS WITNESS POST. OWNERSHIP IS OF THE CENTRAL VERMONT RAILWAY.

• DESCRIPTIONS PROVIDED BY VTGS

TRAVERSE TIES



ALIGNMENT TIES

N =	N =	N =	N =	N =
E =	E =	E =	E =	E =

**NOTES:**

I. VAOT TO PROVIDE ALIGNMENT TIES DURING CONSTRUCTION.

**STATE OF VERMONT  
AGENCY OF TRANSPORTATION**

Town Of <b>MIDDLESEX-BOLTON</b>	Bridge No. <b>43N&amp;S</b>
Highway No. <b>I-89</b>	Log Sta. Surv. Sta.

I-89 OVER US ROUTE 2

**CONTROL POINT TIES (43N&S)**

Designed By <b>V.A.O.T.</b>	Drawn By <b>V.A.O.T.</b>
Checked By <b>V.A.O.T.</b>	Bridge Design Supervisor <b>J.P. HALSTEAD</b>
Date <b>10/99</b>	Date <b>10/99</b>

PROJECT <b>MIDDLESEX-BOLTON</b>	PROJECT NO. <b>IM-089-2(26)</b>
---------------------------------	---------------------------------

TVGA CAD Drawing No. <b>43ties</b>	Date <b>10/99</b>
Bridge Sheet No. <b>C-10</b>	Sheet <b>10</b> of <b>307</b>

**DATUM**  
VERTICAL **NAVD 88**  
HORIZONTAL **NAD 83/92**