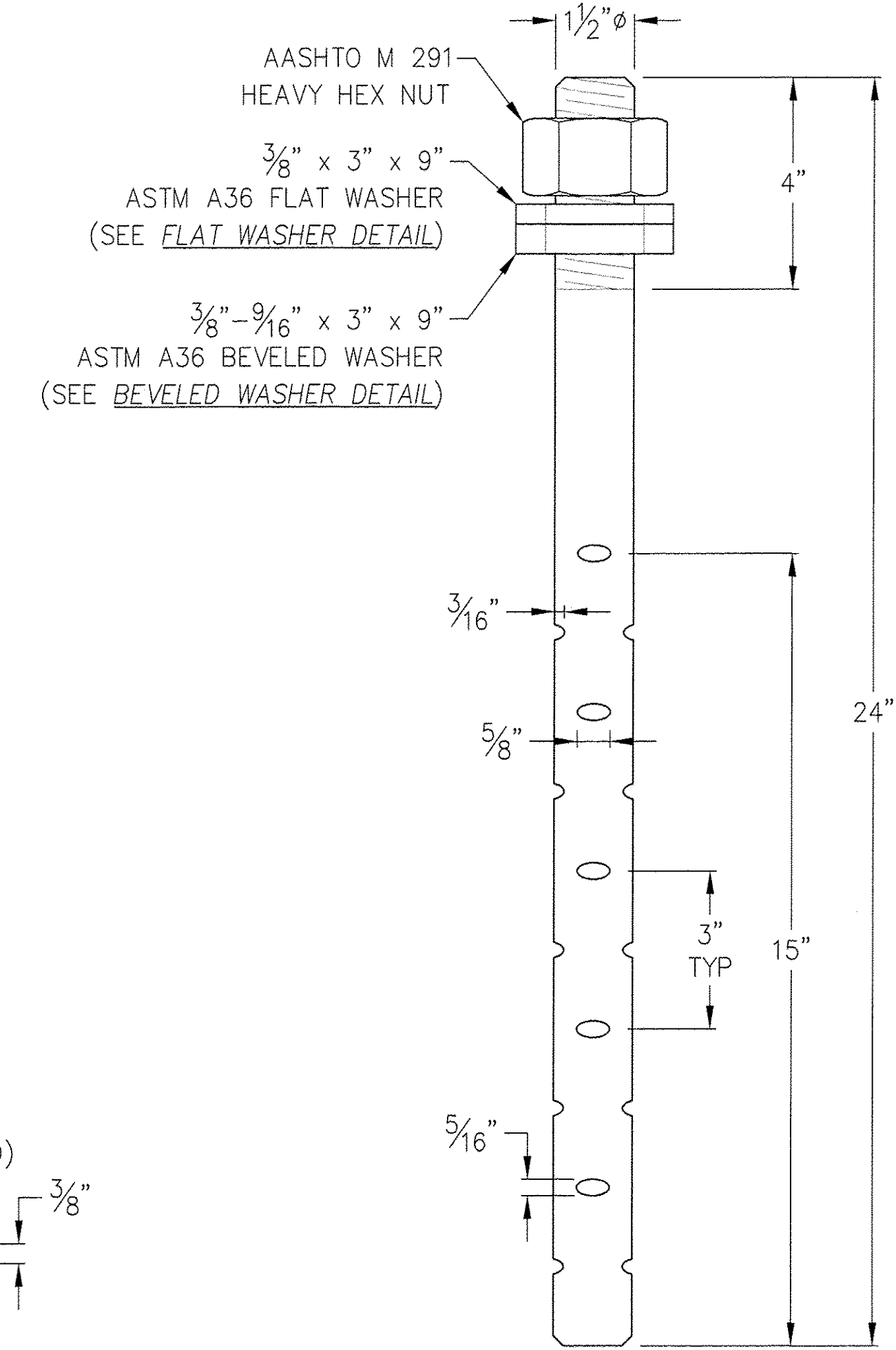
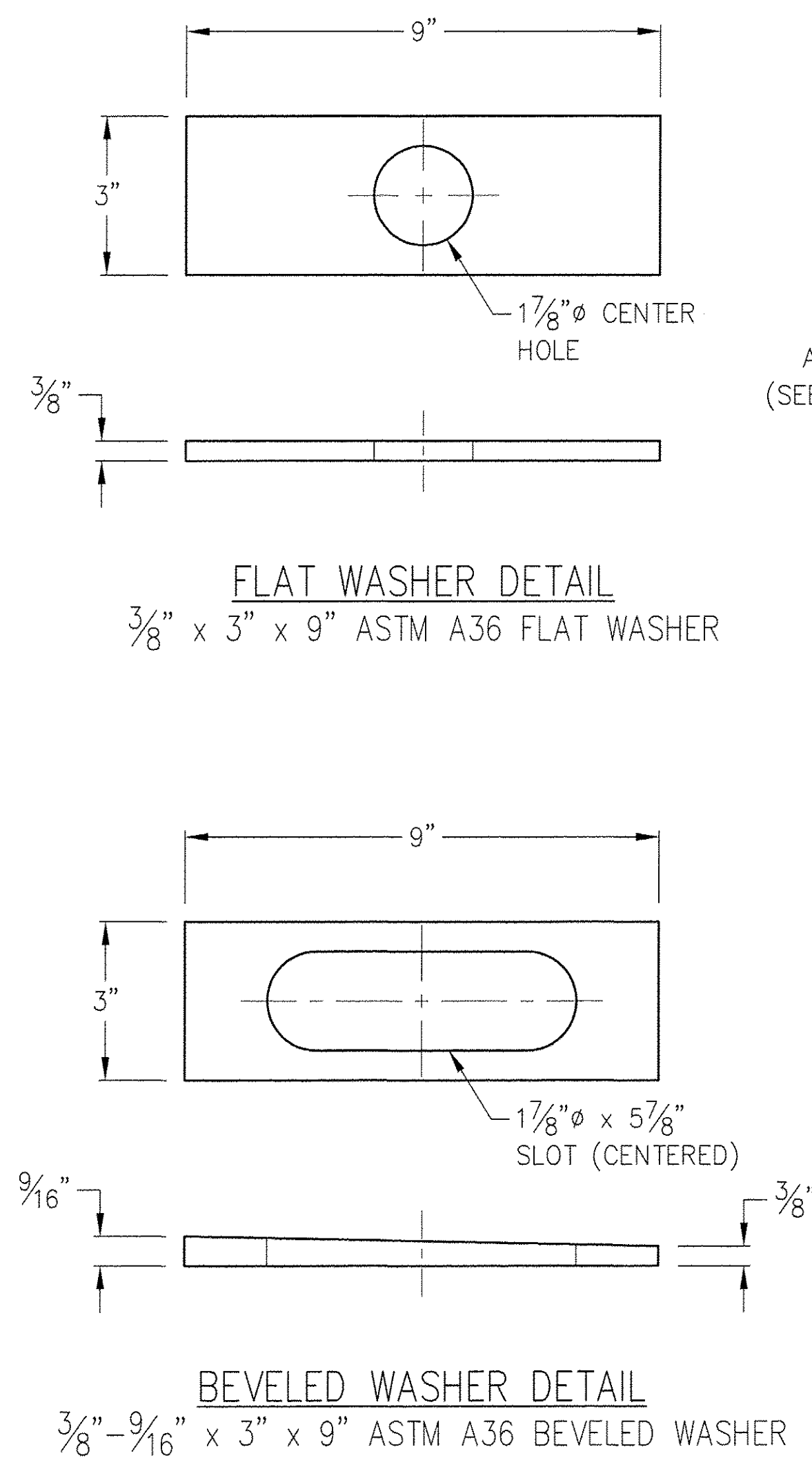
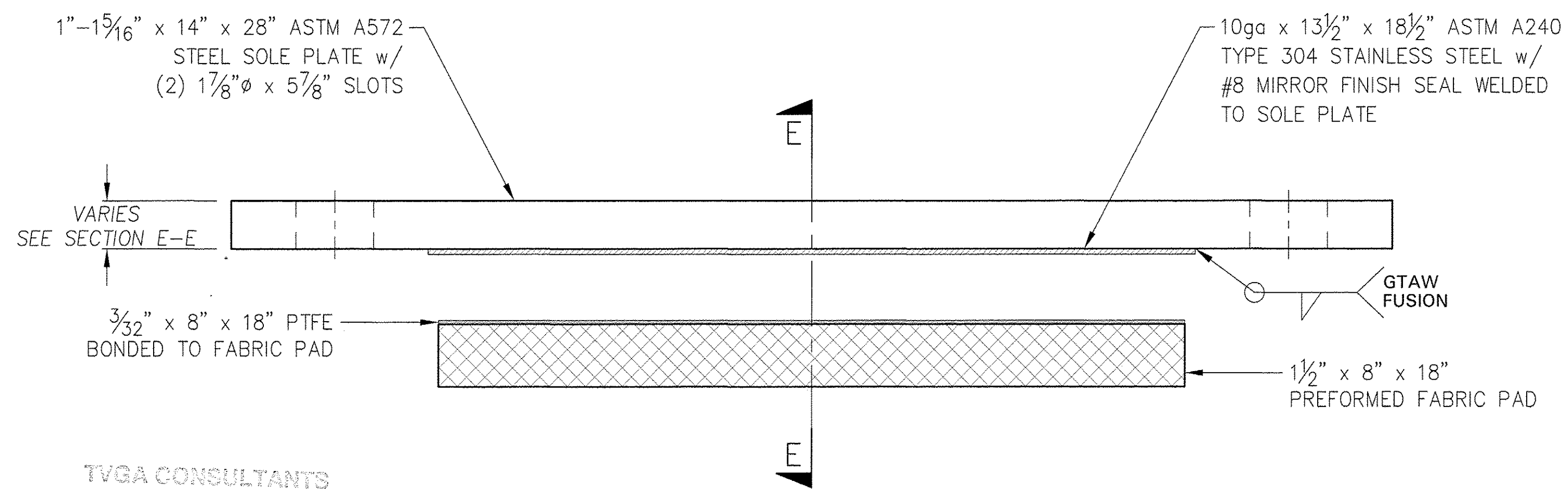


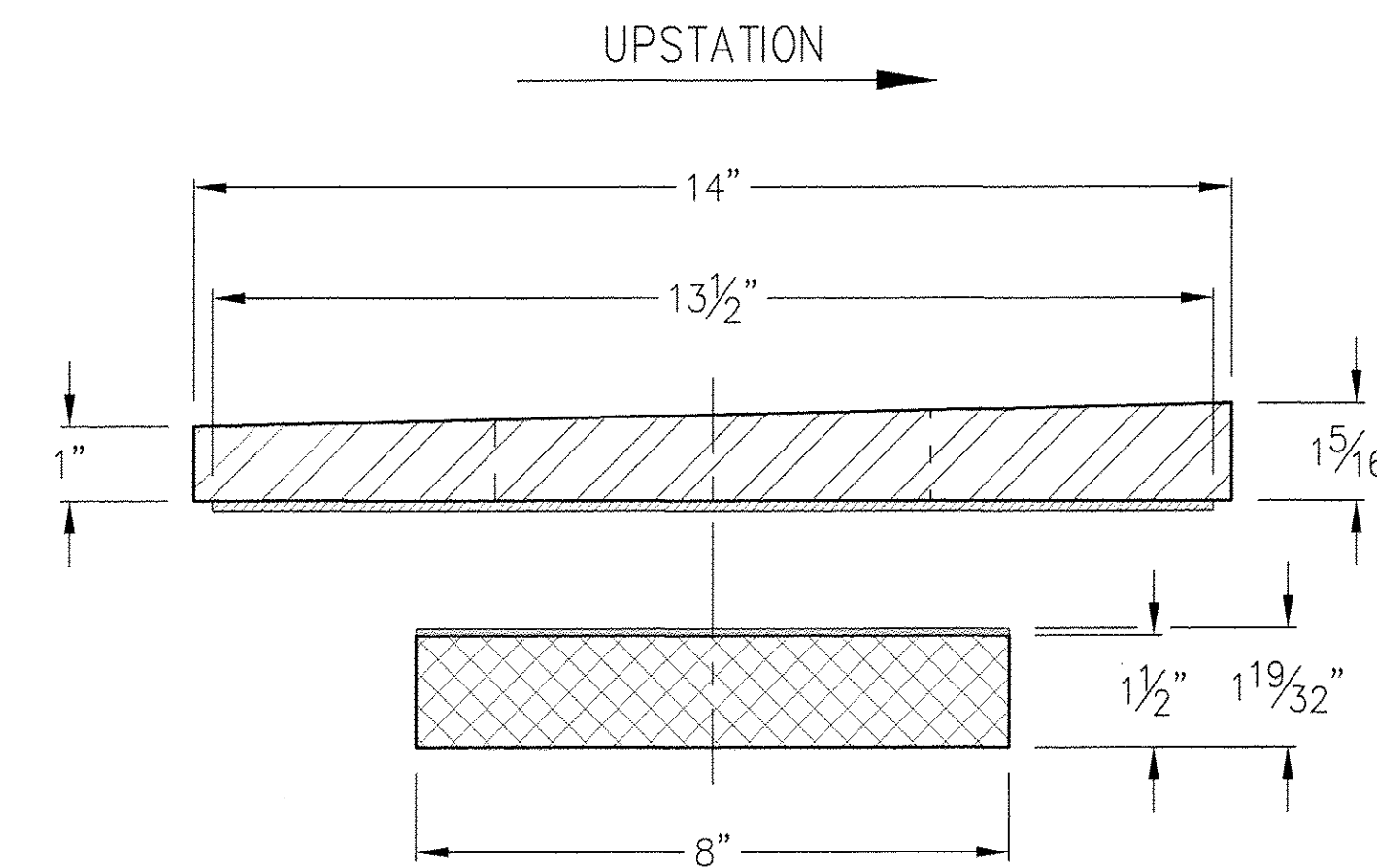
PLAN VIEW



ANCHOR BOLT ASSEMBLY
 1 1/2" ϕ x 24" LONG ASTM A307 SWAGED ANCHOR BOLT
 w/ (1) AASHTO M 291 HEAVY HEX NUT,
 (1) 3/8" x 3" x 9" ASTM A36 FLAT WASHER &
 (1) 3/8" - 9/16" x 3" x 9" ASTM A36 BEVELED WASHER
 ALL GALVANIZED PER AASHTO M 232
 (12) REQ'D FOR MK. 03



ELEVATION



SECTION E-E

TVGA CONSULTANTS

NO EXCEPTIONS TAKEN
 FURNISH AS CORRECTED
 REVISIONS AND PERMIT
 FROM THE TVGA CONSULTANTS TO THE ORIGINAL DRAWING AND SPECIFICATIONS AND TO THE CONTRACT DOCUMENTS. SUCH REVISIONS, IF ANY, SHALL BE INDICATED BY A REVISION SYMBOL AND A REVISION NUMBER. THE TVGA CONSULTANTS SHALL BE RESPONSIBLE FOR THE ACCURACY OF THE INFORMATION PROVIDED TO THE CONTRACT DOCUMENTS. THE TVGA CONSULTANTS SHALL BE RESPONSIBLE FOR THE ACCURACY OF THE INFORMATION PROVIDED TO THE CONTRACT DOCUMENTS. THE TVGA CONSULTANTS SHALL BE RESPONSIBLE FOR THE ACCURACY OF THE INFORMATION PROVIDED TO THE CONTRACT DOCUMENTS.

BY: James W. Pappas
 DATE: 1/23/04

MK. 03
 BRIDGE 3N, ABUT. 2
 GIRDERS N1-N6
 EXPANSION BEARING - FABRIC PAD
 (6) REQ'D

GENERAL NOTES:
 SEE SHEET 1

SCALE: NTS

REV	DESCRIPTION	DATE	CHK BY	DWN BY	DATE	DRAWING NO.	SHEET NO.
A	ORIGINAL SHOP DWG ISSUE	11/24/08	DMH	DMH	10/3/08	38627VT-04	4 OF 8

Seismic Energy Products, L.P.

STRUCTURAL BEARINGS FOR BRIDGES & BUILDINGS
 518 PROGRESS WAY
 ATHENS, TEXAS 75751
 PHONE: 903-675-8571
 FAX: 903-677-2875

STATE OF VERMONT
 AGENCY OF TRANSPORTATION

CUSTOMER: J.A. McDONALD

P.O. NO: SIGNED QT

TOWN OF GUILFORD	HIGHWAY NO. I-91	BRIDGE NO. 3N & 3S
---------------------	---------------------	-----------------------

PROJECT GUILFORD	PROJECT NO. IM 091-1(33)
---------------------	-----------------------------

I-91 OVER BROAD BROOK
 & BROAD BROOK ROAD
 EXPANSION BEARINGS - FABRIC PAD