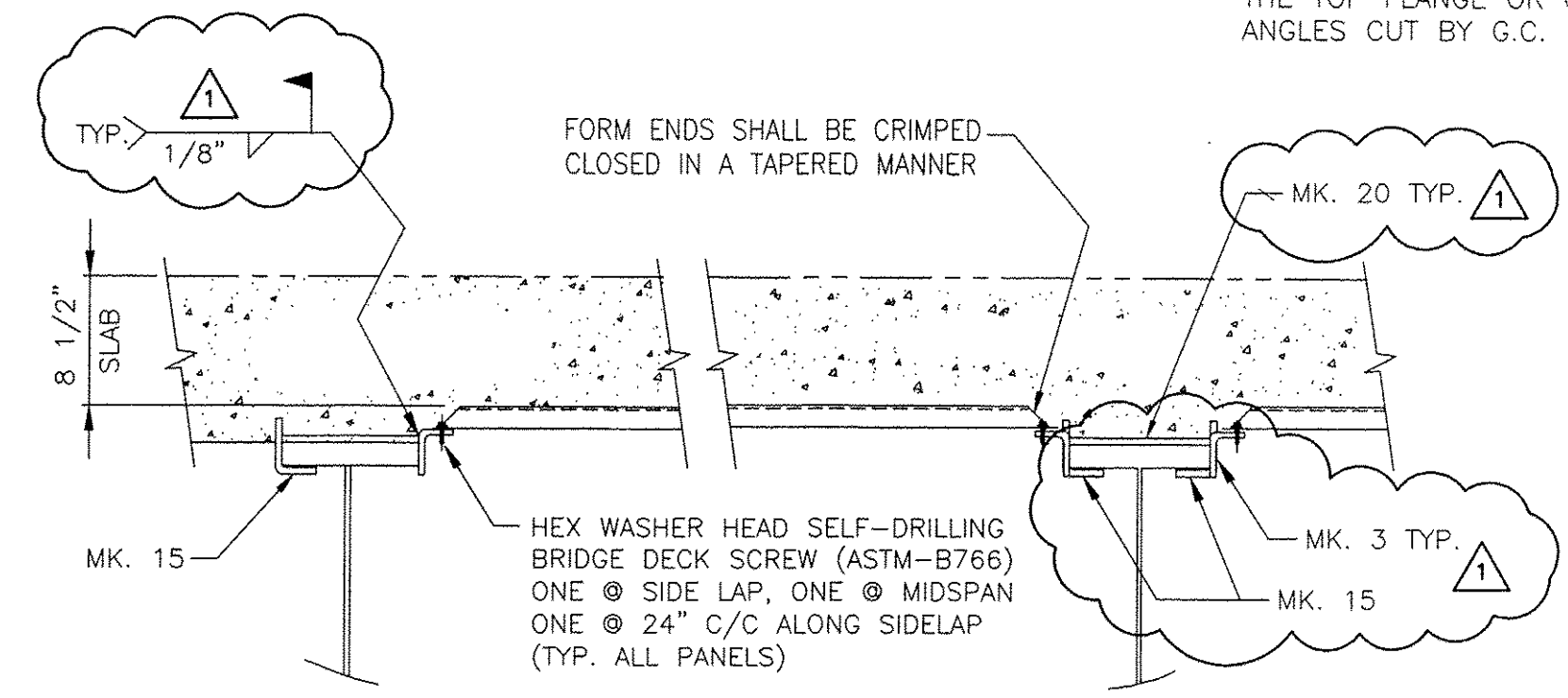


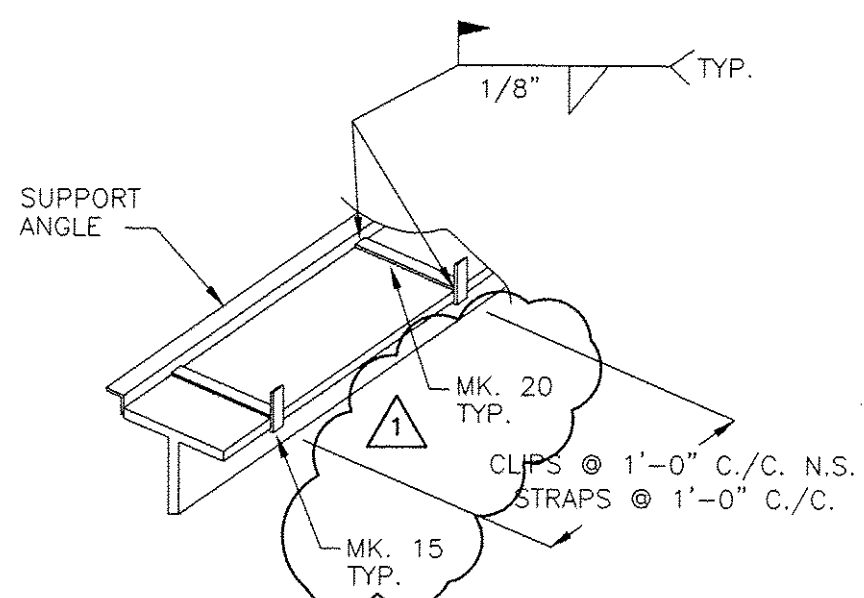
SECTION A-A
COMPRESSION AREA CONNECTION
NO SCALE

NOTE:
SUPPORT ANGLES SHALL BE PLACED IN THE "LEG DOWN" POSITION WHERE EVER POSSIBLE. WHERE "LEG UP" POSITION IS NECESSARY, THE UPPER MOST PORTION OF THE ANGLE SHALL NOT PROJECT MORE THAN 1" ABOVE THE TOP FLANGE OR COVER PLATE. ANGLES CUT BY G.C. IF REQUIRED.

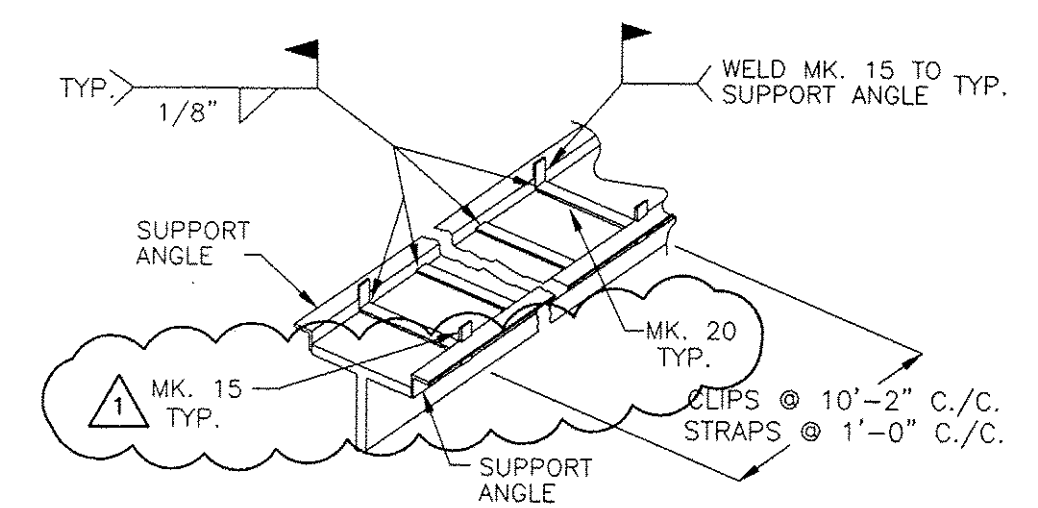


SECTION B-B
TENSION AREA CONNECTION
NO SCALE

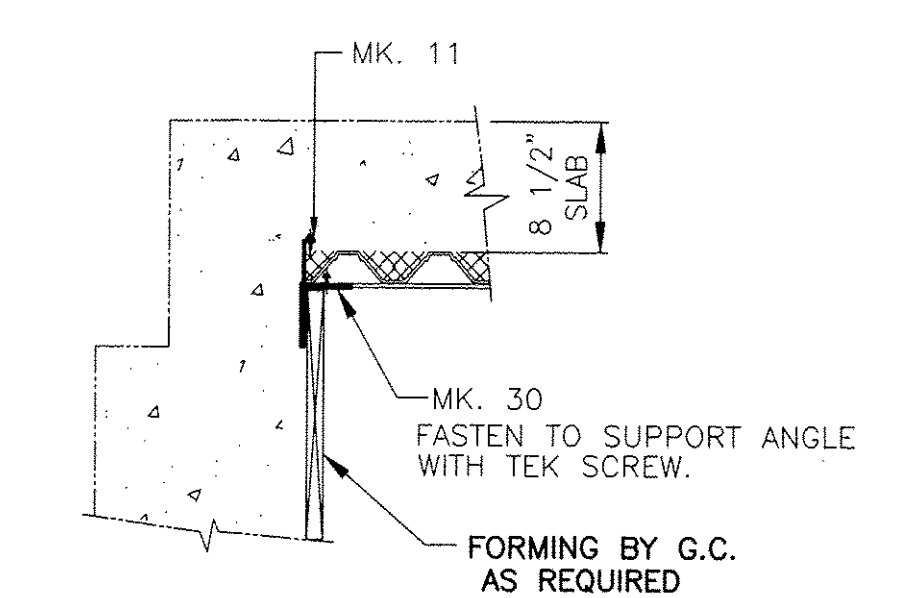
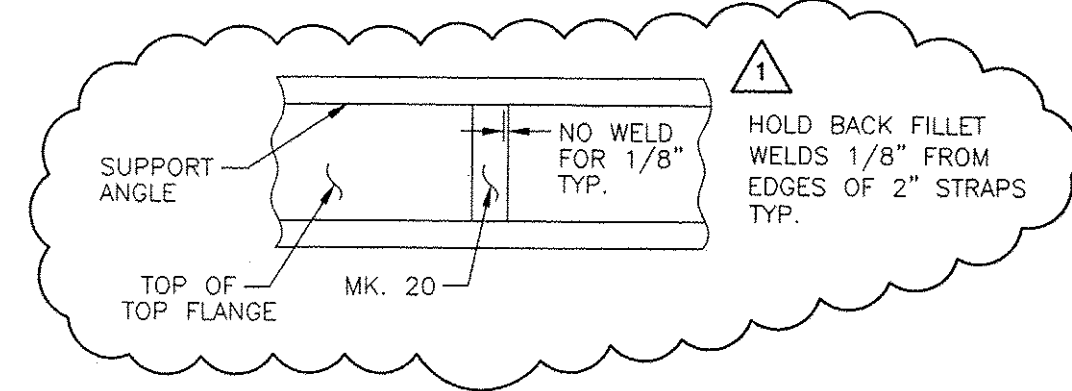
NOTE:
SUPPORT ANGLES CANNOT BE WELDED TO STRINGER IN TENSION AREA.



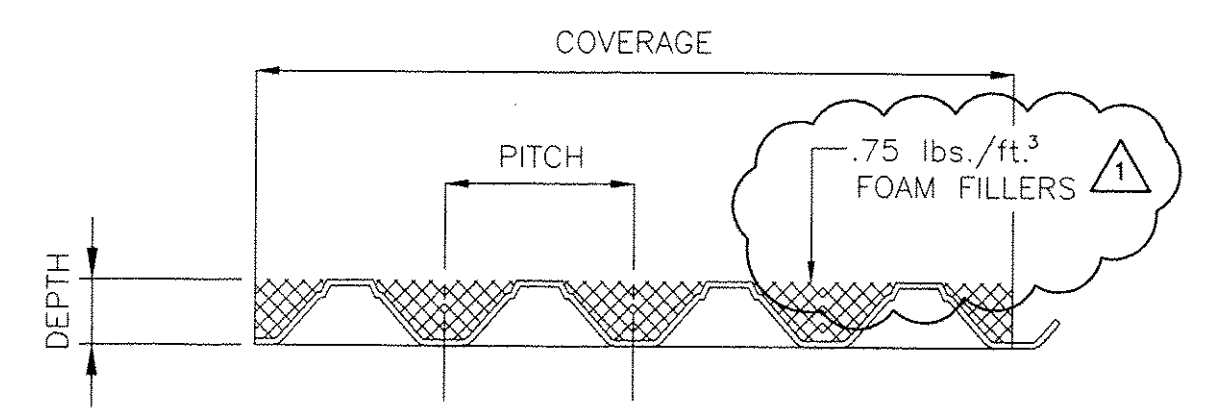
TENSION AREA (EXTERNAL BEAM)
NO SCALE



TENSION AREA (INTERNAL BEAM)
NO SCALE



SECTION D-D
FIXED END ABUT
NO SCALE

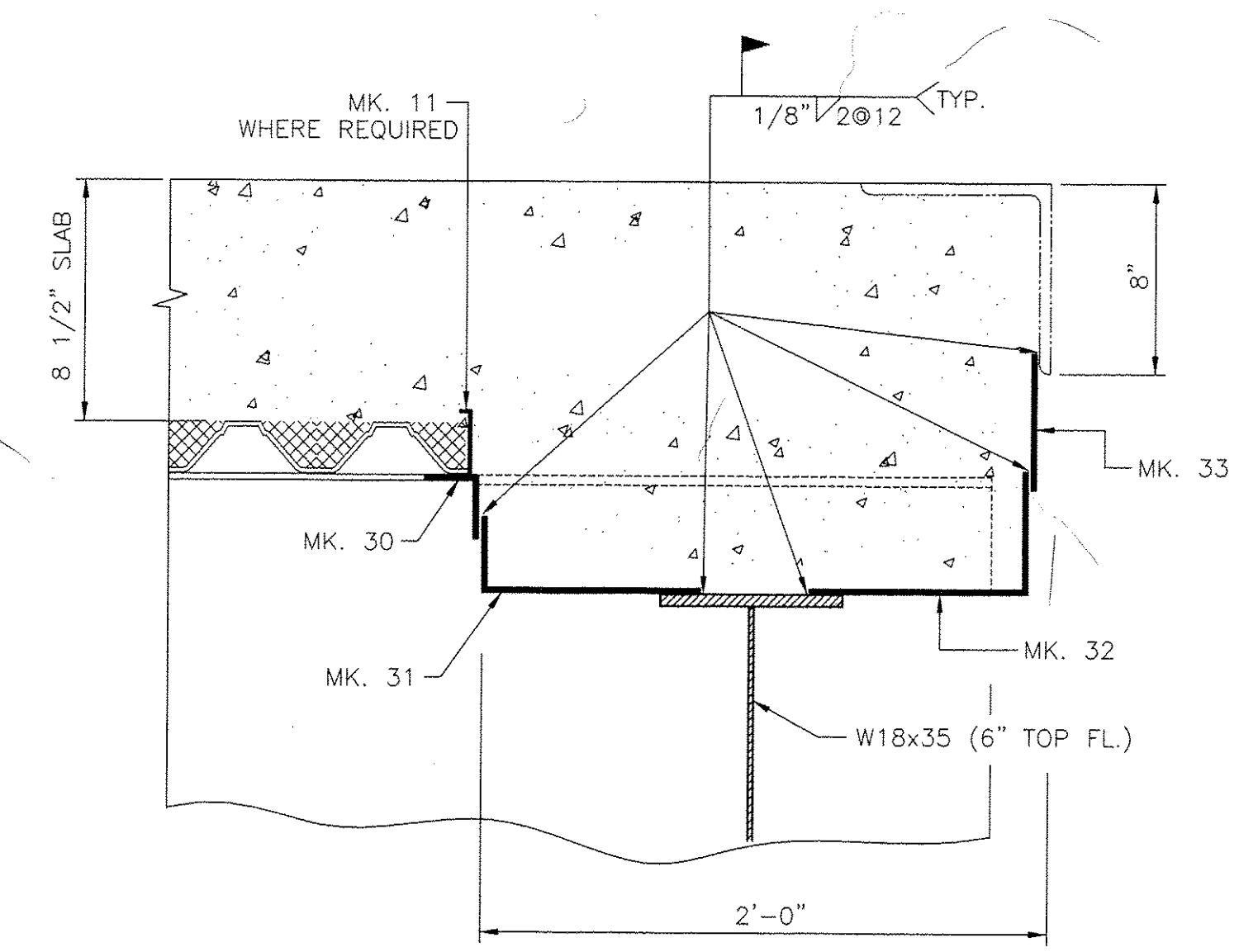


BRIDGE DECK SECTION

DEPTH	PITCH	COVERAGE	GAGE	I	S
2"	8 1/2"	34"	22	.328 in ² /ft.	.276 in ² /ft.
2 1/2"	8"	32"	22	.518 in ² /ft.	.382 in ² /ft.

BRIDGE DECK MATERIAL LIST					
TYPE	GAGE	QTY.	LENGTH	SQUARE	
BRIDGE 3N					
2 1/2" X 8"	22	480	81.5"	86.93	
BRIDGE 3S					
2" X 8 1/2"	22	360	70.5"	59.93	
TOTALS		840		146.86	

BRIDGE DECK ACCESSORIES							
ACCESSORY QUANTITIES BASED ON LIN. FTG. REQUIRED. CUT-OFFS MUST BE UTILIZED.							
BRIDGE	6000		HEX WASHER HEAD SELF-DRILLING BRIDGE DECK SCREW (ASTM-B766)				
3N	3S	GIRTH	LENGTH	MARK	DESCRIPTION	ANGLE	GAGE
260	208	5"	120"	3	3" X 2" SUPPORT ANGLE	90	12
---	4	2 3/4"	120"	11A	2" X 3/4" CLOSURE ANGLE	90	20
5	---	3 1/4"	120"	11B	2 1/2" X 3/4" CLOSURE ANGLE	90	20
10	8	6"	120"	30	3" X 3" CLOSURE	90	14
5	4	14"	120"	31	12" X 4" CLOSURE	90	14
5	4	16"	120"	32	10" X 4" CLOSURE	90	14
5	4	6"	120"	33	6" FLAT CLOSURE	---	14
550	480	4"	2"	15	3" X 1" HOLD DOWN CLIPS	90	12
115	98	2"	120"	20	2" STRAPS	---	12



SECTION C-C
EXP END ABUT
NO SCALE

DESIGN NOTES:

- MATERIAL IS PRODUCED BY WHEELING CORRUGATING CO., 1134 MARKET ST. WHEELING, WV 26003, PHONE: (304) 234-2326
- BRIDGE DECK FORM AND ACCESSORIES SHALL BE FABRICATED FROM STRUCTURAL QUALITY STEEL CONFORMING TO ASTM A-653/A653M AND TO THE GRADES AS LISTED:
DECK FORMS GA. 19 THRU 22 = GRADE 50 or 80
DECK FORMS GA. 14 THRU 18 = GRADE 40
ALL ACCESSORIES = GRADE 40
- GALVANIZED COATING CONFORMS TO LATEST REVISION OF ASTM SPECIFICATION A924, COATING CLASS G165.
- ALL FASTENERS TO BE .0005 CADMIUM PLATED COATINGS.

ERECTION NOTES:

- BRIDGE DECK FORM AND ACCESSORY MATERIALS NOT PROMPTLY ERECTED SHALL BE STORED OFF THE GROUND WITH ONE END ELEVATED FOR DRAINAGE.
- GENERAL CONTRACTOR SHALL TAKE GRADES ON BOTH SIDES OF BEAMS AT MAXIMUM OF 10'-0" INTERVALS SO THAT DECK ERECTOR CAN ADJUST ELEVATION OF SUPPORTS TO FOLLOW FINISHED ROADWAY PROFILE (PLUS OR MINUS 1/4").
- PRIOR TO PLACEMENT OF FORMS, THE ENGINEER OR CONTRACTOR SHALL ADVISE ERECTOR OF DIRECTION OF FOUR. ERECTOR WILL PLACE FORM SHEETS IN OPPOSITE DIRECTION TO MINIMIZE DIFFERENTIAL DEFLECTION.

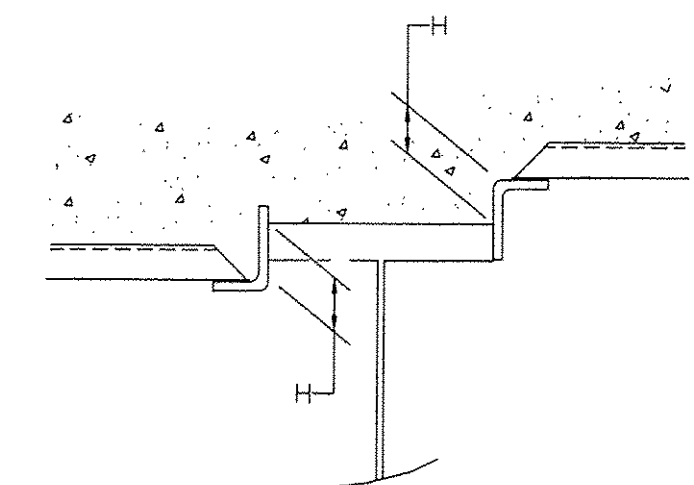
MISCELLANEOUS NOTES:

- THE CONTRACTOR SHALL VERIFY ALL DIMENSIONS.
- CARE SHALL BE TAKEN TO AVOID DAMAGING THE INSTALLED FORM FROM EITHER STACKING OF MATERIALS, DROPPING EQUIPMENT OR HEAVY CONSTRUCTION TRAFFIC. DAMAGED FORMS TO BE REPLACED BY CONTRACTOR, AS DIRECTED BY ENGINEER AT NO ADDITIONAL COST TO CITY/STATE.
- CONCRETE SHALL NOT BE DUMPED ON FORMS TO A DEPTH GREATER THAN 10" ABOVE TOP OF FORMS.
- ANY ADDITIONAL CONCRETE REQUIRED DUE TO USE OF FORMS SHALL BE AT THE CONTRACTOR'S EXPENSE.
- CALCIUM CHLORIDE (OR ANY ADMIXTURE CONTAINING SALTS) SHALL NOT BE USED IN THE CONCRETE PLACED ON THE FORMS.
- ALL MATERIALS AND WORKMANSHIP SHALL CONFORM TO THE MOST RECENT VERMONT A.O.T. STANDARD SPECIFICATIONS AND CURRENT SUPPLEMENTS.
- ALL FORMS AND THEIR SUPPORTS HAVE BEEN DESIGNED TO CARRY THE DEAD LOAD OF FORM, THE DECK CONCRETE PLUS 55 psf FOR CONSTRUCTION LOADS.
- GENERAL CONTRACTOR TO PROVIDE FIELD TOUCH UP MATERIAL, AS REQUIRED.
- WEEPHOLES AT CONSTRUCTION JOINTS AS REQUIRED. (BY GENERAL CONTRACTOR).
- WELDING TO FLANGE IN TENSION AREA IS NOT PERMITTED.

TVGA CONSULTANTS

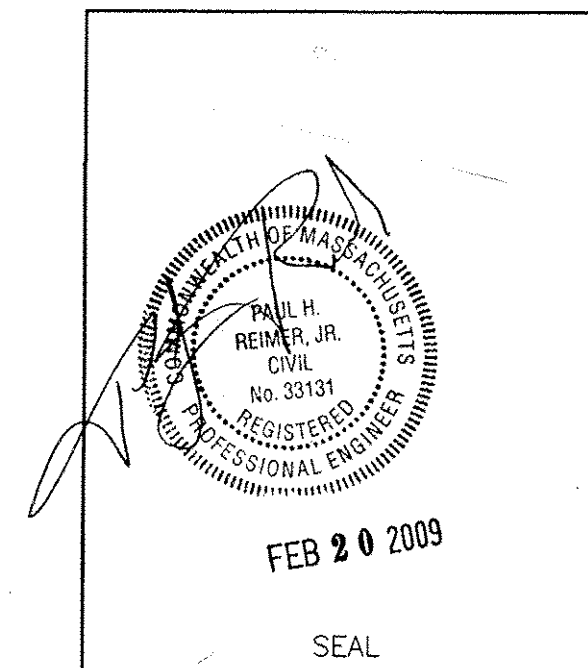
NO EXCEPTIONS TAKEN REJECTED
 FURNISH AS CORRECTED
 REVISE AND RESUBMIT
 ENGINEER HAS REVIEWED THESE DRAWINGS AND SPECIFICATIONS AND OTHER DATA WHICH CONTRACTOR IS REQUIRED TO SUBMIT, ONLY FOR CONFORMANCE WITH THE INFORMATION GIVEN IN THE CONTRACT DOCUMENTS AND IS NOT RESPONSIBLE FOR THE DESIGN OR CONSTRUCTION OF THE PROJECT OR FOR ANY ERRORS OR OMISSIONS IN THE CONTRACT DOCUMENTS. SUCH REVIEW IS NOT A GUARANTEE OF THE ACCURACY OR COMPLETENESS OF THE INFORMATION PROVIDED TO THE CONTRACTOR. CONTRACTOR IS RESPONSIBLE FOR OBTAINING ALL NECESSARY PERMITS AND FOR OBTAINING ALL NECESSARY INFORMATION FROM THE LOCAL AUTHORITIES AND FOR OBTAINING ALL NECESSARY INFORMATION FROM THE LOCAL AUTHORITIES AND FOR OBTAINING ALL NECESSARY INFORMATION FROM THE LOCAL AUTHORITIES.

TRANSMITTAL RECORD			
NO.	DATE	APPROVAL	SENT FOR
2	3/25/09	APPROVAL	
1	2/20/09	APPROVAL	



CONTRACTOR SHALL SURVEY HAUNCH 'H' FROM TOP OF STRINGER FLANGE TO TOP OF ANGLE SEAT. THIS DISTANCE SHALL BE MARKED ON THE TOP FLANGE @ 10' INTERVALS ON EACH EDGE OF BEAM.

NO SCALE



RECORD OF REVISIONS			
REV.	DATE	DESCRIPTION	
△	3/25/09	ENGINEER'S REVISIONS	

OWNER:	STATE OF VERMONT AGENCY OF TRANSPORTATION		
CONTRACTOR:	J.A. McDONALD, INC.		
PROJECT:	I-91 OVER BROAD BROOK & BROAD BROOK ROAD BRIDGE NO. 3N&S		
LOCATION:	GUILFORD, VERMONT		
	J & B WELDING, INC. 229 N. MAIN ST. COOPERSBURG, PA 18036 (610) 282-3461 FAX. (610) 282-3014		
DATE:	2/13/09	APPROVED BY:	CHECKED BY:
SCALE:	3/32" = 1'-0"	J&B PROJECT No:	920
PG.	2 OF 2	PROJECT No:	IM 091-1(33)