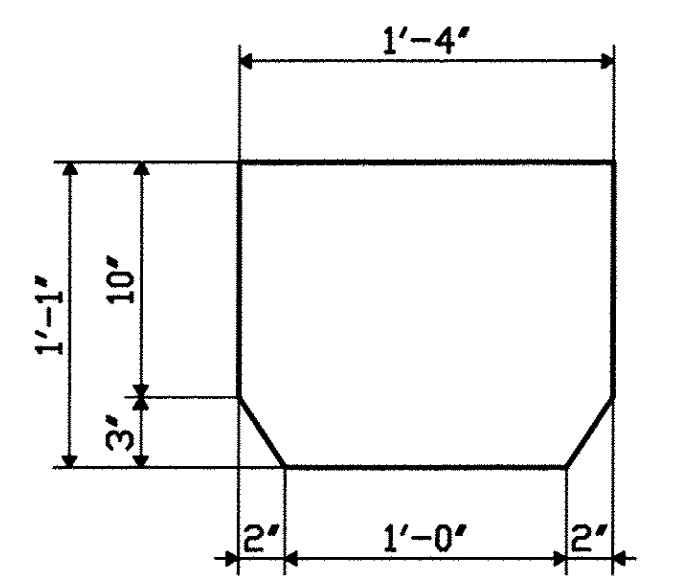
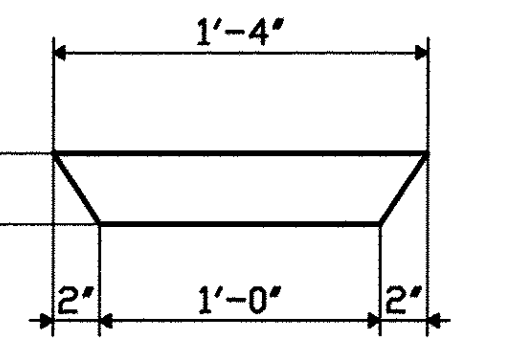


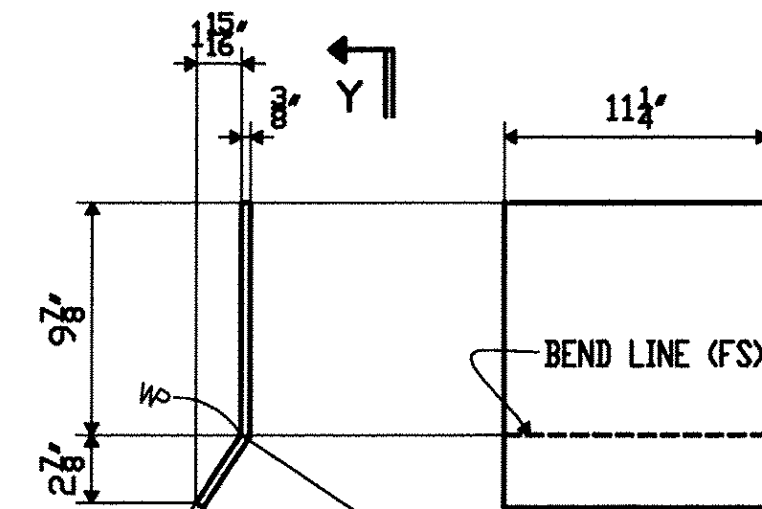
**SHOP NOTE**  
 HOPPERS SHALL BE FABRICATED FROM 3/8" STEEL PL'S.  
 THE FABRICATION WELDS SHALL BE 1/4" FILLET WELDS ON  
 THE INSIDE OF THE HOPPER AND SHALL BE FULL LENGTH  
 TO ENSURE A WATERTIGHT CONTAINER.



DETAIL OF PL "A112"



DETAIL OF PL "C112"



VIEW Y



DETAIL OF PL "D112"

**SHOP BILL**

LINE NO.	QTY	MARK	DESCRIPTION	LENGTH	ASSEMBLY MARK	REMARKS	MTRL. SPEC.	MATERIAL APPLICATION	
								P.O. NO.	LINE NO.
1									
2	1	113M1	DOWNSPOUT HOPPER						
3			PL 3/8 x 16	1	1	A112	M270-36	SHN	
4			PL 3/8 x 3	1	4	C112	M270-36	SHN	
5			PL 3/8 x 11 1/4	1	1 3/8	D112 BEND	M270-36	SHN	
6			TS 12x12x3/8	3	2 7/16	E112 BEV-1E	A500 GR B	3728SA	1
7			PL 3/8 x 11 1/4	2	7 3/4	H112 BEV-1E	M270-36	SHN	
8			PL 3/8 x 11 1/4	3	2 7/16	M112 BEV-1E	M270-36	SHN	
9			TS 12x12x3/8	4	10 3/4	N112 BEV-1E	A500 GR B	3728SA	1
10			PL 3/8 x 11 1/4	4	4	P112 BEV-1E	M270-36	SHN	
11			PL 3/8 x 11 1/4	4	10 3/4	T112 BEV-1E	M270-36	SHN	
12			L 6x6x1/2	0	4	AA112	M270-36	SHN	
13									
14									
15									
16									
17									
18									
19									
20									
21									
22									
23									
24									
25									

DOMESTIC MATERIAL  
 SEE HN101 FOR FABRICATION NOTES

**TVGA CONSULTANTS**

NO EXCEPTIONS TAKEN  
 FURNISH AS CORRECTED  
 REVISIT AND RESUBMIT  
 REJECTED

ENGINEER HAS REVIEWED SHOP DRAWINGS AND SPECIFICATIONS AND CONFIRMS THAT THE FABRICATOR IS TO BE RESPONSIBLE FOR THE CONFORMANCE WITH THE REQUIREMENTS OF THE CONTRACT DOCUMENTS. SUCH REVIEW DOES NOT CONSTITUTE A GUARANTEE OF THE ACCURACY OF THE INFORMATION OR THE PROPERNESS OF THE METHODS, TECHNIQUES, MATERIALS OR PROCEDURES EMPLOYED IN THE FABRICATION OF THE WORK. CONSULTANT IS NOT RESPONSIBLE FOR DIMENSIONS NOT BEING OBTAINED OR FOR DEFECTS IN THE FABRICATION PROCESS OR TO THE QUALITY OF THE FABRICATION. CONSULTANT IS NOT RESPONSIBLE FOR THE WORK OF THE FABRICATOR.

BY: *[Signature]*  
 DATE: 7/21/2007

PROJECT No: ACIM 091-1(33)  
 STA. 22+47.71 TO STA. 25+05.93  
 BRIDGE No. 3S (SOUTHBOUND)  
 TOWN OF GUILFORD

FABRICATED BY: COLFAX NASH  
 HOLES: 11/16"  
 SHOP PAINT: HOT DIP GALV. PER A123 AFTER FAB.  
 SHOP INSPECTION: GALV. PER A153 FOR BOLTS, NUTS & WASHERS

ORDER NO. 08-18537H32  
 DETAILS OF DOWNSPOUT HOPPER CONN.

PROJECT I-91 OVER BROAD BROOK AND BROAD BROOK ROAD  
 LOCATION WINDHAM COUNTY, VT  
 CUSTOMER MEC CONSTRUCTION

CAROLINA STEEL GROUP, LLC.

MADE BY GM  
 CHECKED BY PDC/SB  
 SQUAD LEADER Precise Drafting Co., Inc.  
 DATE 03-09



GENERAL NOTES			REVISIONS		
DATE	NO.	BY	DATE	NO.	BY
07/06/09	R1	PDC/SB			
					CHANGED FROM PLS TO TS

SHEET HF113