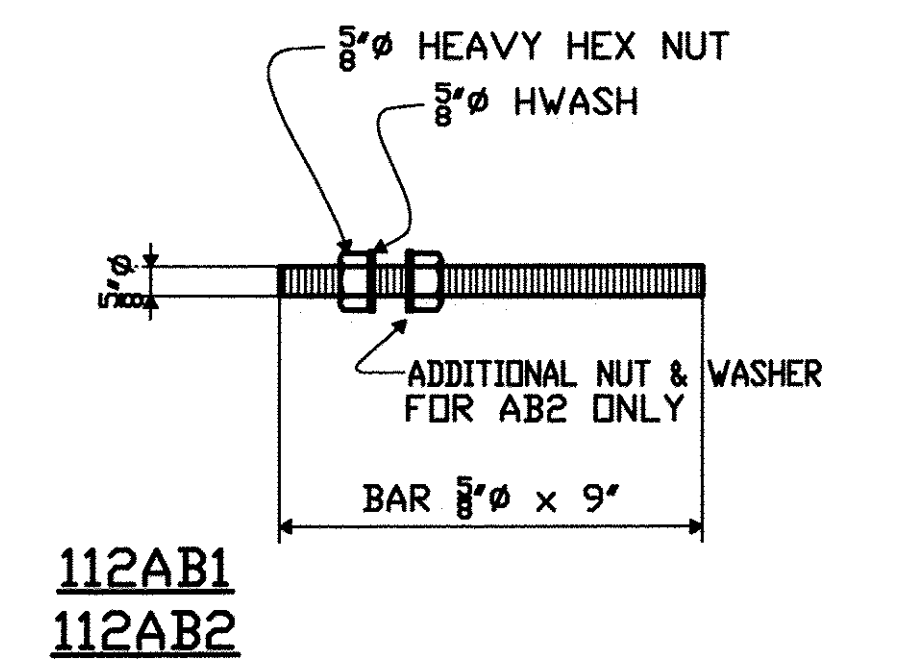
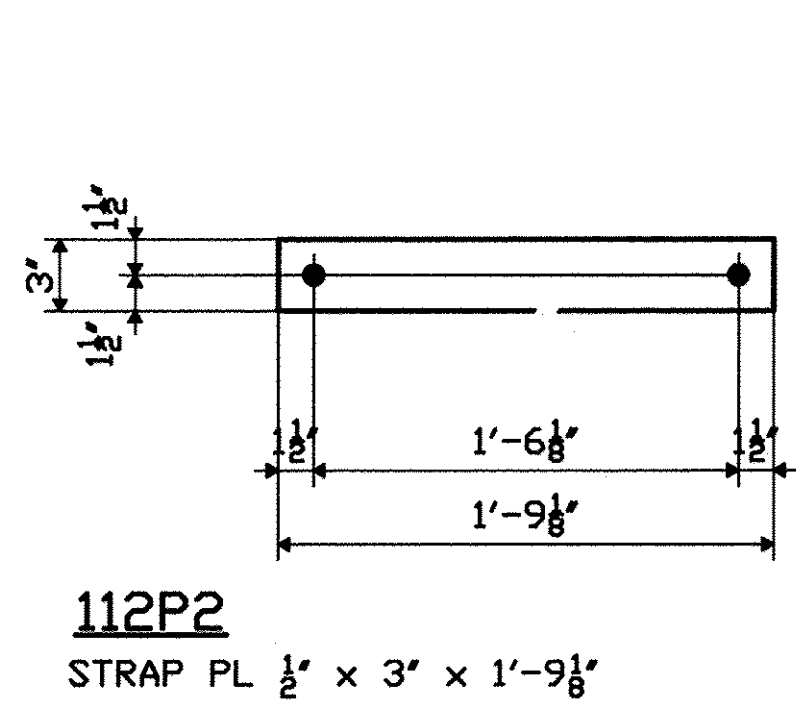
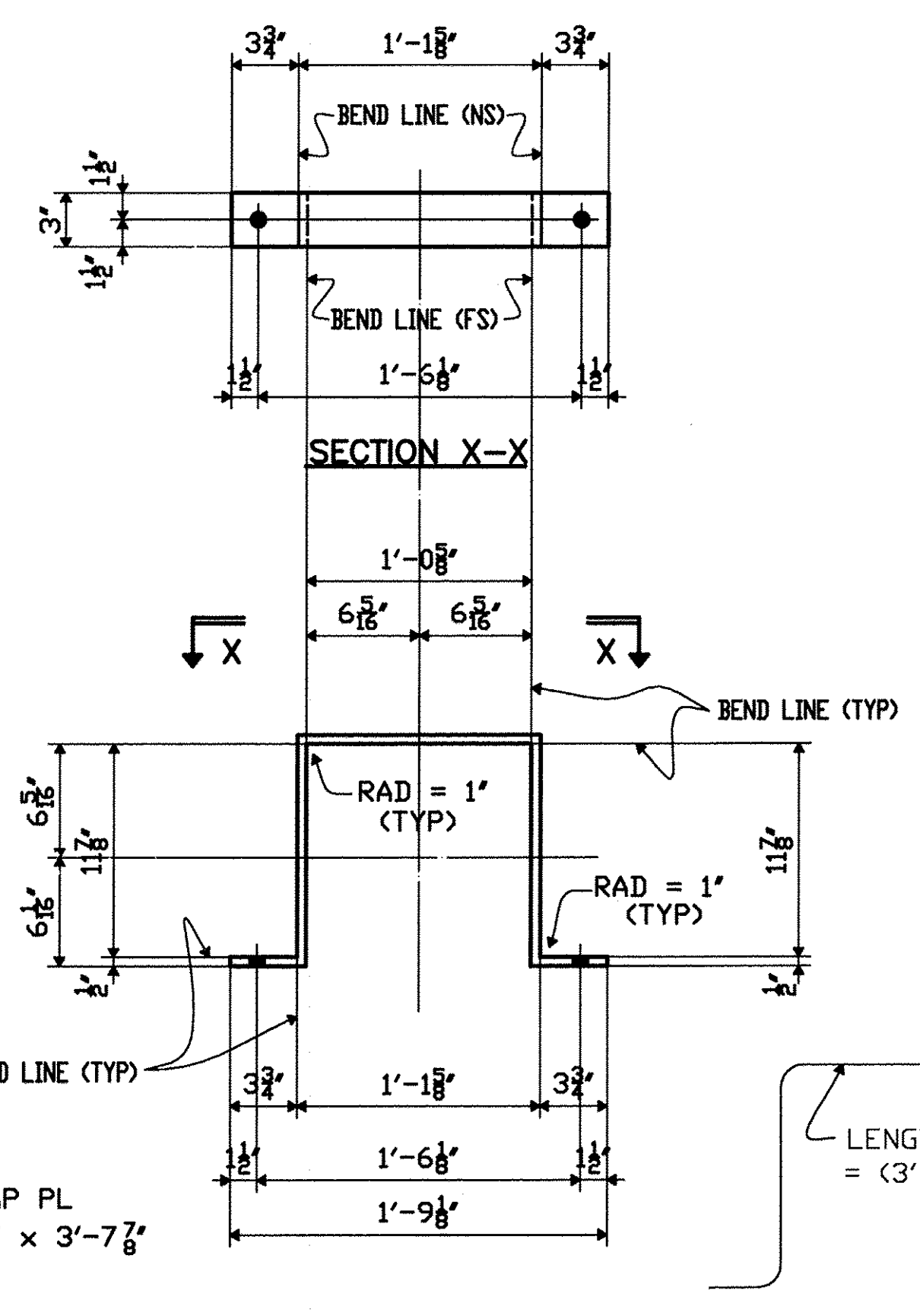
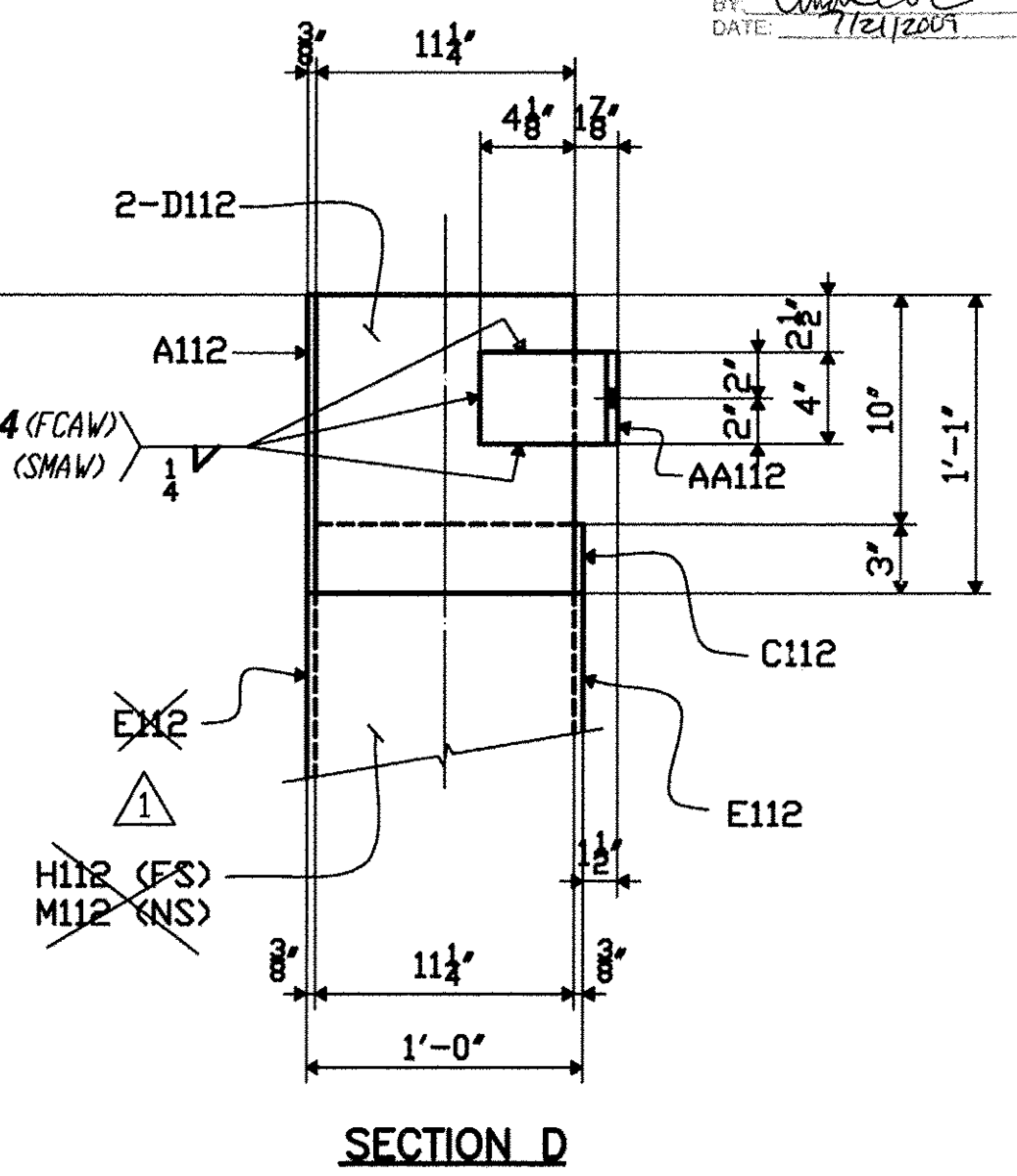
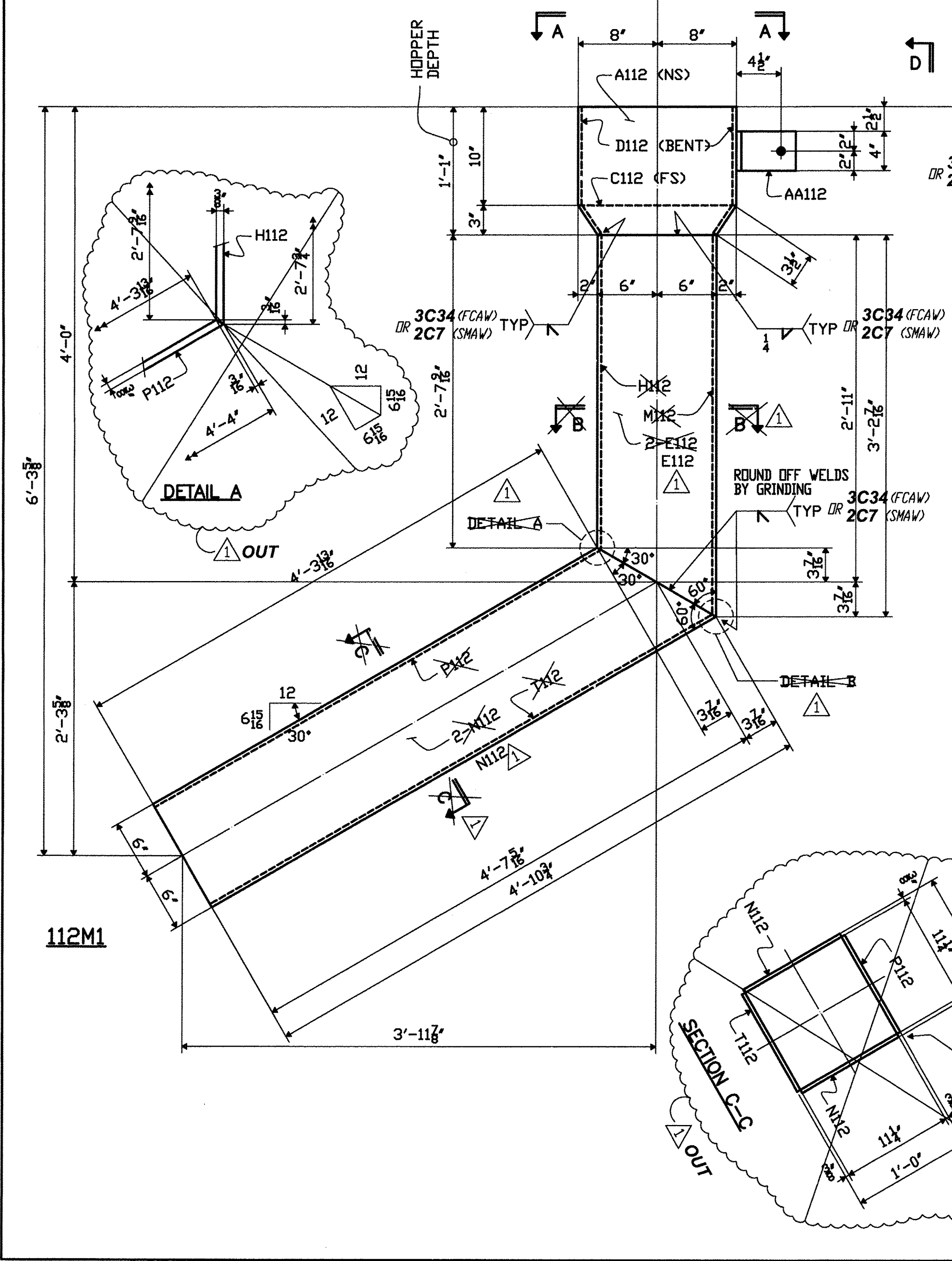
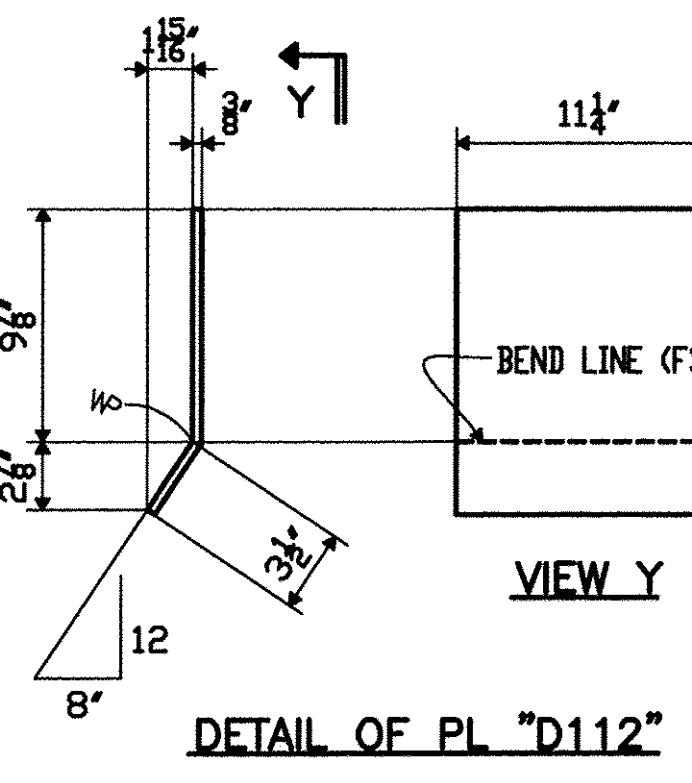
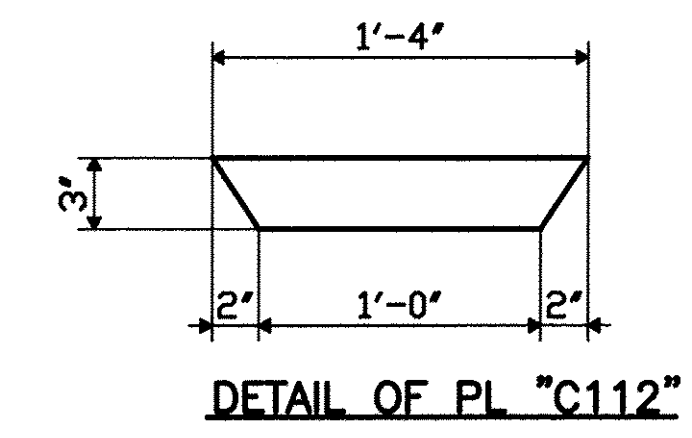
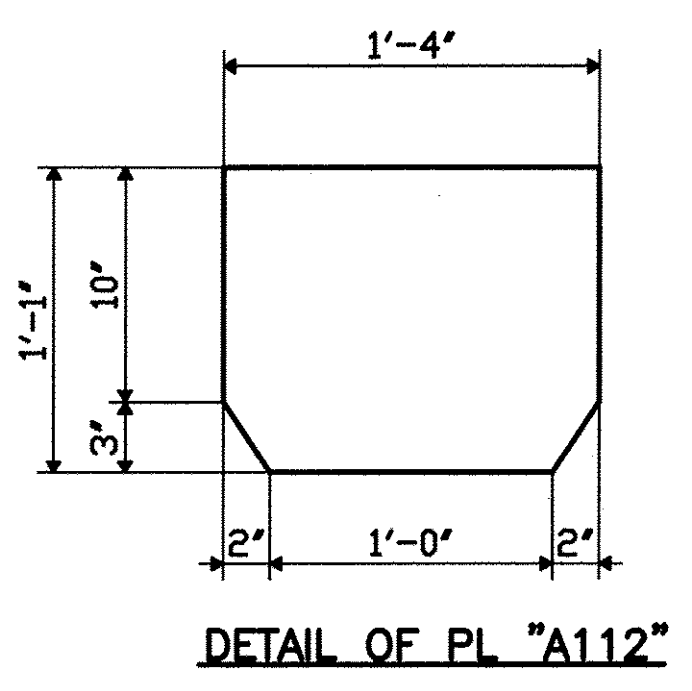


**SHOP NOTE**  
 HOPPERS SHALL BE FABRICATED FROM 3/8" STEEL PL'S.  
 THE FABRICATION WELDS SHALL BE 1/4" FILLET WELDS ON THE INSIDE OF THE HOPPER AND SHALL BE FULL LENGTH TO ENSURE A WATERTIGHT CONTAINER.

**TVGA CONSULTANTS**  
 NO EXCEPTIONS TAKEN  
 FURNISH AS CORRECTED  
 REVISE AND RESUBMIT  
 ENGINEER has reviewed Shop Drawings and Samples and other data which Contractor is required to submit, etc. for compliance with the instructions given in the Contract Documents and compliance with the design intent of the completed Project as a fabricating whole as indicated in the Contract Documents. Such review does not extend to means, methods, techniques, sequences or procedures of construction or to safety precautions and programs incident thereto. Such review does not extend to any licensed profession or accreditation. Contractor is responsible for dimensions to be confirmed and corrected at the job site for information that pertains solely to the fabrication and/or to techniques of construction, and for coordination of the work of all trades.  
 BY: *Andrew J. Galt*  
 DATE: 11/21/2011



SHOP BILL											
LINE NO.	QTY	MARK	DESCRIPTION	DIM'S	LENGTH	ASSEMBLY MARK	REMARKS	MTRL. SPEC.	MATERIAL APPLICATION		
									P.O. NO.	LINE NO.	QTY
1	1	112M1	DOWNSPOUT HOPPER								
2	1		PL 3/8 x 16	1	1	A112		M270-36	SHN		
3	1		PL 3/8 x 3	1	4	C112		M270-36	SHN		
4	2		PL 3/8 x 11 1/4	1	3 3/8	D112	BEND	M270-36	SHN		
5	1		TS 12x12x3/8	3	2 7/8	E112	BEV-1E	A500 GR B	3728SA	1	
6	1		PL 3/8 x 11 1/4	2	7 3/4	H112	BEV-1E	M270-36	SHN		
7	1		PL 3/8 x 11 1/4	3	2 7/8	M112	BEV-1E	M270-36	SHN		
8	1		TS 12x12x3/8	4	10 3/4	N112	BEV-1E	A500 GR B	3728SA	1	
9	1		PL 3/8 x 11 1/4	4	4	P112	BEV-1E	M270-36	SHN		
10	1		PL 3/8 x 11 1/4	4	10 3/4	T112	BEV-1E	M270-36	SHN		
11	1		L 6x6x1/2	0	4	AA112		M270-36	SHN		
12											
13											
14											
15	4	112P1	PL 1/2 x 3	3	7 7/8		BEND	M270-36	SHN		
16											
17	4	112P2	PL 1/2 x 3	1	9 1/8			M270-36	SHN		
18											
19	2	112AB1	BAR 5/8	0	9		THREADED	A307	JS6502	1	
20	8	112AB2	BAR 5/8	0	9		THREADED	A307	JS6502	2	
21		18 F	NUT 5/8 HEX					GV	M291	JS6502	1
22											
23	18	112FP23	18 F HWASH 5/8					GV	F436	JS6502	1
24											
25											
26											
DOMESTIC MATERIAL											

SEE HN101 FOR FABRICATION NOTES

PROJECT No: ACIM 091-1(33)  
 STA. 22+47.71 TO STA. 25+05.93  
 BRIDGE No. 3S (SOUTHBOUND)  
 TOWN OF GUILFORD

FABRICATED BY COLFAX  
 HOLES 1/16" SHOP FASTENERS  
 SHOP PAINT HOT DIP GALV. PER A123 AFTER FAB.  
 SHOP INSPECTION GALV. PER A153 FOR BOLTS, NUTS & WASHERS

ORDER NO. 08-18537H32  
 DETAILS OF DOWNSPOUT HOPPER CONN.

PROJECT I-91 OVER BROAD BROOK AND BROAD BROOK ROAD  
 LOCATION WINDHAM COUNTY, VT  
 CUSTOMER MEC CONSTRUCTION  
 CAROLINA STEEL GROUP, LLC.

MADE BY GM  
 CHECKED BY PDC/SB  
 SOUND LEADER Precision Drafting Co. Inc.  
 DATE 03-09

REVISIONS  
 DATE NO. BY  
 07/06/09 R1 PDC/SB CHANGED FROM PL'S TO TS

LENGTH AT CL PL = (3'-7 1/8")

SHEET HF112