

WT 10.0 TONS
 Lifting weight provided up to the nearest 1/2 ton

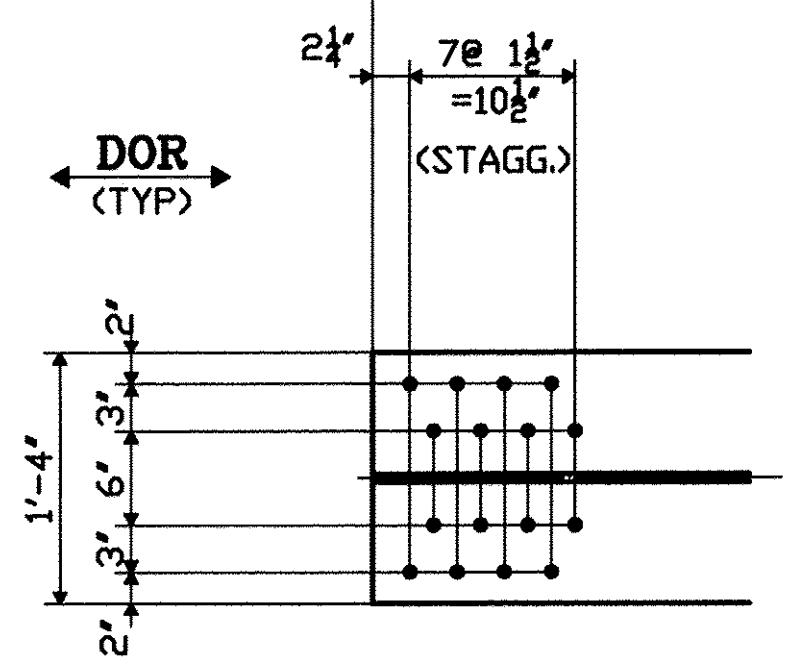
TVGA CONSULTANTS

NO EXCEPTIONS TAKEN REJECTED
 FURNISH AS CORRECTED
 REVISE AND RESUBMIT

ENGINEER has reviewed Shop Drawings and Samples and other data which Contractor is required to submit, only for performance with the information given in the Contract Documents and consistency with the design concept of the completed Project as a functioning whole as indicated in the Contract Documents. Such reviews do not extend to means, methods, techniques, sequences or procedures of construction or to safety procedures and programs incident thereto. Such reviews do not extend to any LEED certification or accreditation. Contractor is responsible for dimensions to be confirmed and controlled at the job site; for information that pertains solely to the fabrication processes or to techniques of construction and for coordination of the work of all trades.

BY: *[Signature]*
 DATE: 7/16/08

109BC5



DOR - DENOTES DIRECTION OF ROLLING

FABRICATED BY **NASH**
 HOLES $\frac{15}{16}$ (UND) SHOP FASTENERS
 SHOP PAINT **NONE**
 SHOP INSPECTION
 GENERAL NOTES **WORK THIS SHEET w/HF109B**

REVISIONS		
DATE	NO.	BY
	R1	

PROJECT No: ACIM 091-1(33)
 STA. 22+47.71 TO STA. 25+05.93
 BRIDGE No. 3S (SOUTHBOUND)
 TOWN OF GUILFORD

ORDER NO. **08-18537H32**
 DETAILS OF **PL GIRDER - SPAN BC LINE 5**
 PROJECT **I-91 OVER BROAD BROOK AND BROAD BROOK ROAD**
 LOCATION **WINDHAM COUNTY, VT**
 CUSTOMER **MEC CONSTRUCTION**
CAROLINA STEEL GROUP, LLC.

MADE BY **GM**
 CHECKED BY **PDC/SB**
 SOUND LEADER **Precise Drilling Co. Inc.**
 DATE **09-08**

DATE: 09-08 SHEET **HF109A**