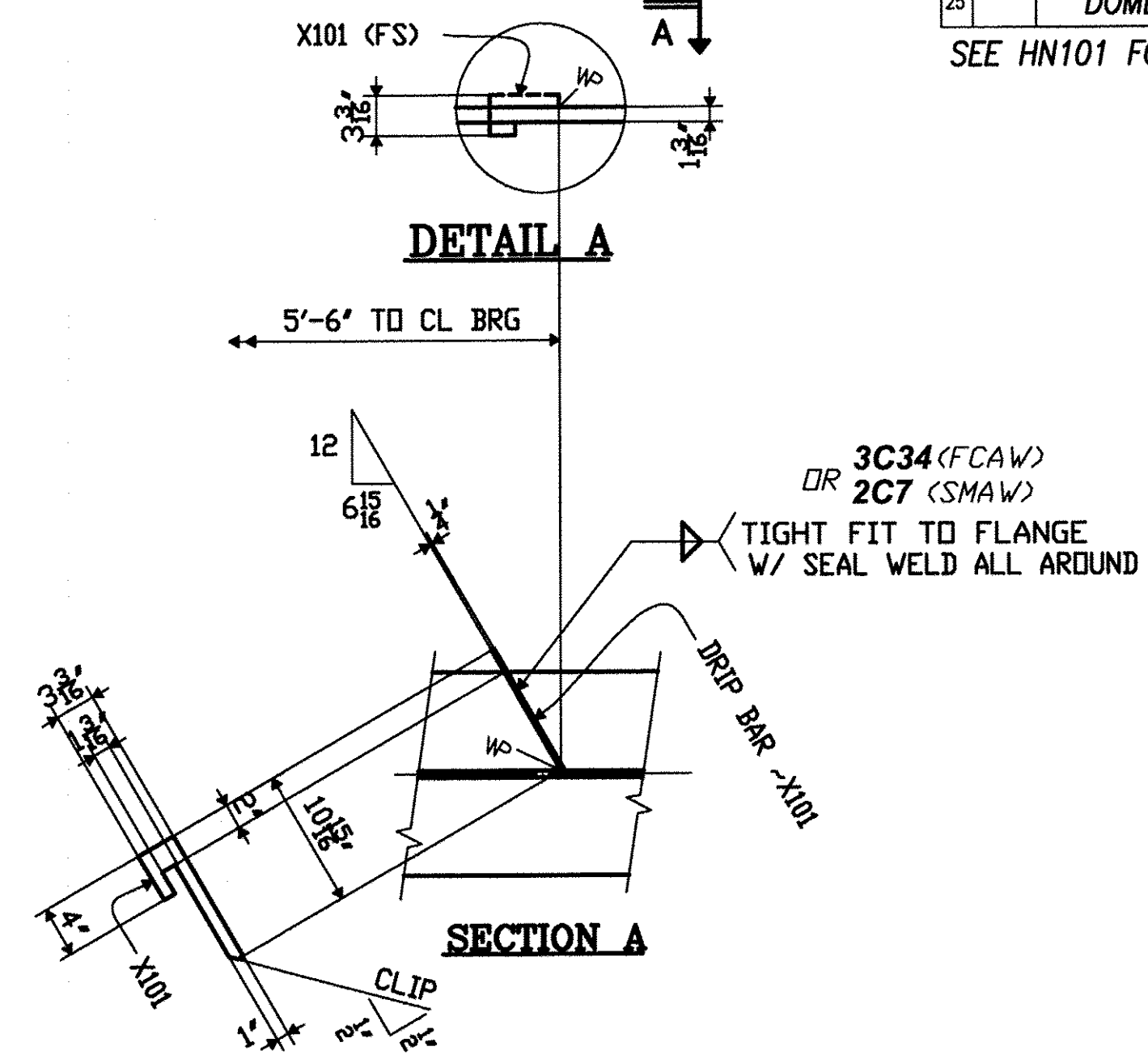


CAMBER DIAGRAM



SHOP BILL

LINE NO.	SHIPPING LIST		DESCRIPTION	LENGTH	ASSEMBLY MARK	REMARKS	MTRL. SPEC.	MATERIAL APPLICATION			
	NO. PCS.	MARK						P.O. NO.	LINE NO.	NO. PCS.	LENGTH
1											
2	1	107BC1	PLATE GIRDER								
3	1		PL 1 3/16 x 16	41	57 7/8	TFBC1	V	M270-50W	6015NH	3	
4	1		PL 7/8 x 16	58	6 3/8	TFBC2	V	M270-50W	6015NH	4	
5	1		PL 1 3/16 x 16	41	57 7/8	BFBC1	V	M270-50W	6015NH	3	
6	1		PL 1 3/16 x 16	58	57 7/8	BFBC2	V	M270-50W	6015NH	1	
7	1		PL 1/2 x 37	65	9	WBC1	V	M270-50W	6015NH	7	
8	1		PL 1/2 x 37	34	3 1/4	WBC2	V	M270-50W	6015NH	9	
9											
10	2		PL 7/8 x 7 3/4	2	7 5/8	A107	FIN-2E	M270-50W	6016NH	1	
11	1		PL 7/8 x 7 3/4	3	1	D101	FIN-2E	M270-50W	6016NH	1	
12	1		PL 7/8 x 7 3/4	3	1	E101	FIN-2E	M270-50W	6016NH	1	
13	5		PL 1/2 x 5	3	1	G101	TF-2E	M270-50W	6016NH	4	
14											
15	1		BAR 1/4 x 3 3/8	0	10 15/16	X101		M270-50W	SHN		
16											
17											
18											
19											
20											
21											
22											
23											
24											
25			DOMESTIC MATERIAL								

SEE HN101 FOR FABRICATION NOTES

TVGA CONSULTANTS

NO EXCEPTIONS TAKEN REJECTED
 FURNISH AS CORRECTED
 REVISE AND RESUBMIT
 ENGINEER has reviewed Shop Drawings and Samples and other data which Contractor is required to submit, only for conformity with the information given in the Contract Documents and compatibility with the design concept of the completed Project as a fabricating whole as indicated in the Contract Documents. Such review does not extend to means, methods, techniques, sequences or procedures of construction or to safety practices and programs incident thereto. Such review does not extend to any L1000 Certification or annotation. Contractor is responsible for dimensions to be confirmed and corrected at the job site, for information that pertains solely to the fabrication process or to techniques of construction, and for coordination of the work of all trades.

BY: *[Signature]*
 DATE: 10/1/2008

PROJECT No: ACIM 091-1(33)
 STA. 22+47.71 TO STA. 25+05.93
 BRIDGE No. 3S (SOUTHBOUND)
 TOWN OF GUILFORD

FABRICATED BY: NASH
 HOLES: 150 (UN) SHOP FASTENERS: _____
 SHOP PAINT: NONE
 SHOP INSPECTION: _____
 GENERAL NOTES: WORK THIS SHEET w/HF107A

ORDER NO. 08-18537H32
 DETAILS OF PL GIRDER - SPAN BC
 LINE 1
 PROJECT I-91 OVER BROAD BROOK AND BROAD BROOK ROAD
 LOCATION WINDHAM COUNTY, VT
 CUSTOMER MEC CONSTRUCTION
 CAROLINA STEEL GROUP, LLC.

DATE	NO.	BY	REVISIONS
	R1		

MADE BY: GM
 CHECKED BY: PDC/SB
 SOUND LEADER: Precise Drafting Co. Inc.
 DATE: 09-08
 SHEET: HF107B