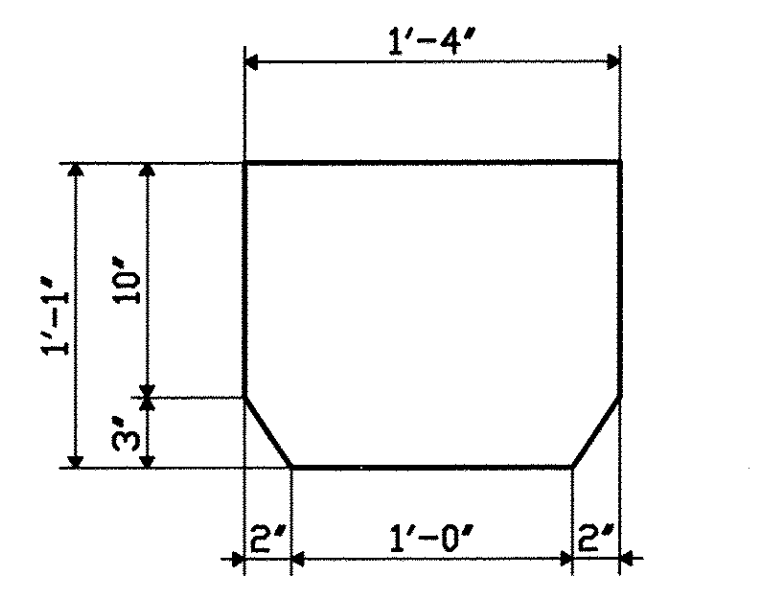
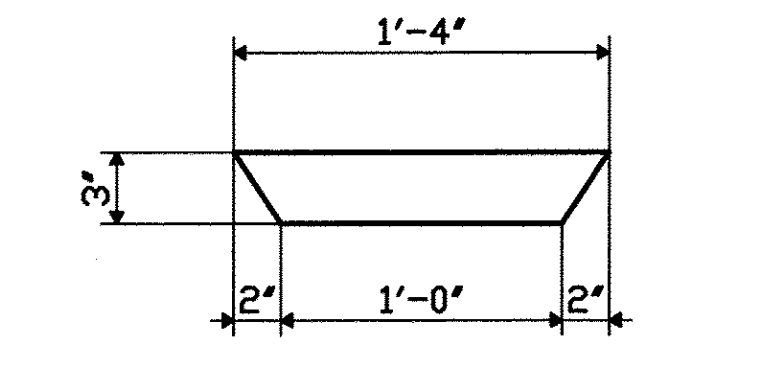


SHOP NOTE
 HOPPERS SHALL BE FABRICATED FROM $\frac{3}{8}$ " STEEL PL'S.
 THE FABRICATION WELDS SHALL BE $\frac{1}{4}$ " FILLET WELDS ON
 THE INSIDE OF THE HOPPER AND SHALL BE FULL LENGTH
 TO ENSURE A WATERTIGHT CONTAINER.

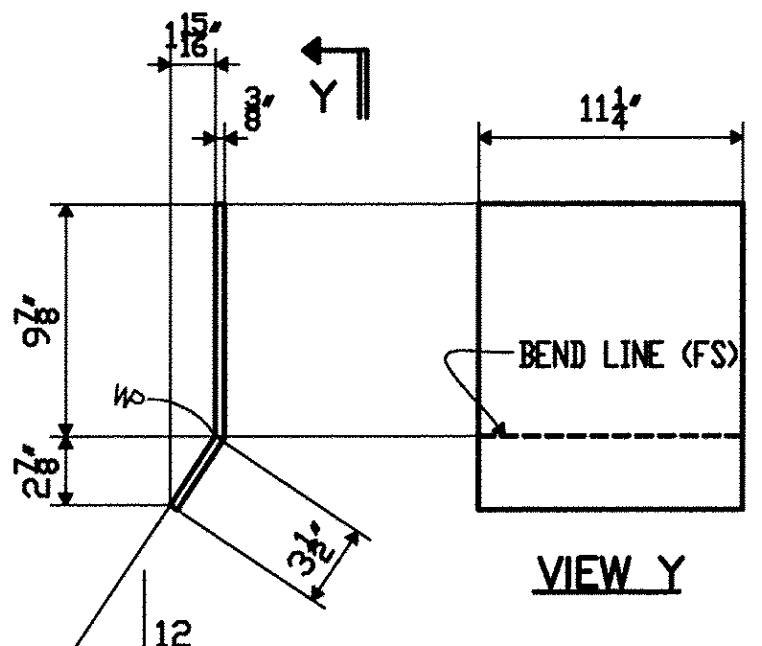
TVGA CONSULTANTS
 NO EXCEPTIONS TAKEN
 FURNISH AS CORRECTED
 ENGINEER HAS REVIEWED SHOP DRAWINGS AND SAMPLES AND
 OTHER DATA WHICH CONTRACTOR IS REQUIRED TO SUBMIT, ONLY FOR
 CONFORMANCE WITH THE INFORMATION GIVEN IN THE CONTRACT
 DOCUMENTS AND CONSISTENTLY WITH THE DESIGN CONCEPT OF THE
 COMPLETED PROJECT AS A FABRICATING SHOP AS INDICATED IN THE
 CONTRACT DOCUMENTS. SUCH REVIEW DOES NOT CONSTITUTE A
 GUARANTEE OR WARRANTY OF ANY KIND OR ASSUMPTION OF
 LIABILITY BY THE ENGINEER FOR THE DESIGN OR FOR THE
 CONSTRUCTION OF THE PROJECT OR FOR THE PERFORMANCE OF THE
 CONTRACTOR. THE CONTRACTOR SHALL BE RESPONSIBLE FOR THE
 SAFETY OF THE FABRICATION PROCESS OR TO THE EXTENT OF
 CONSULTATION WITH THE ENGINEER FOR THE WORK OR MATERIALS.
 DATE: 07/06/09
 BY: [Signature]



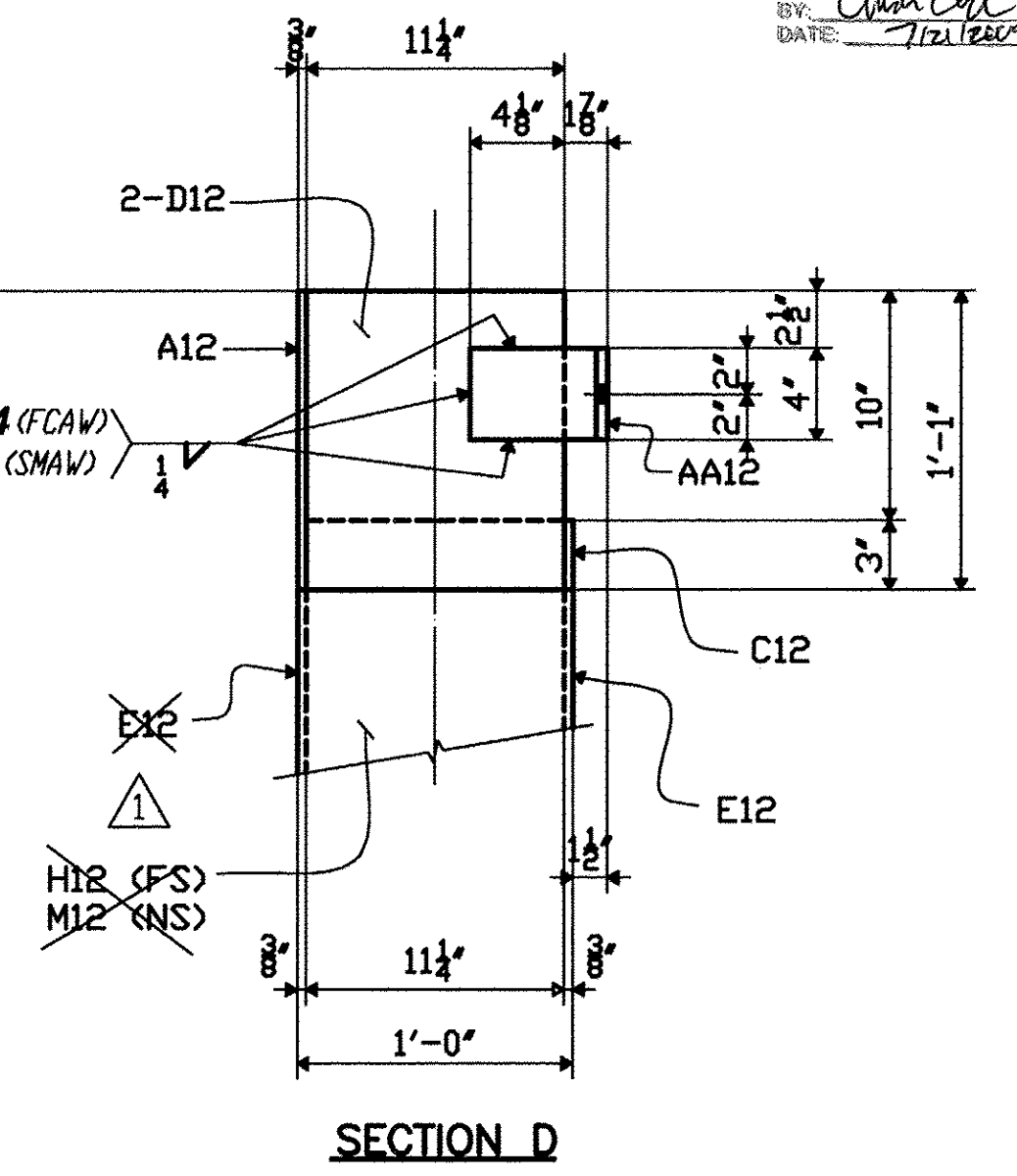
DETAIL OF PL "A12"



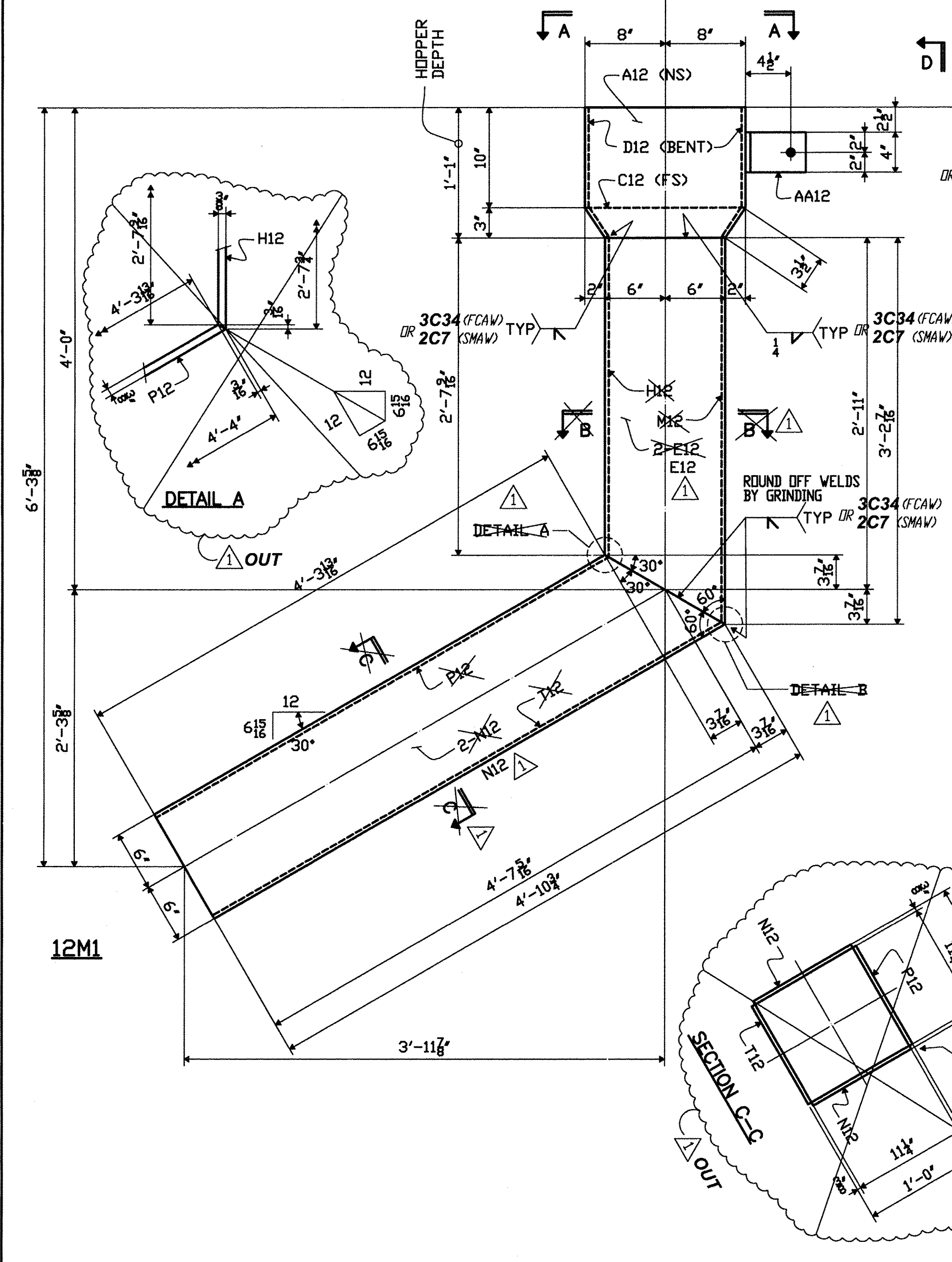
DETAIL OF PL "C12"



DETAIL OF PL "D12"

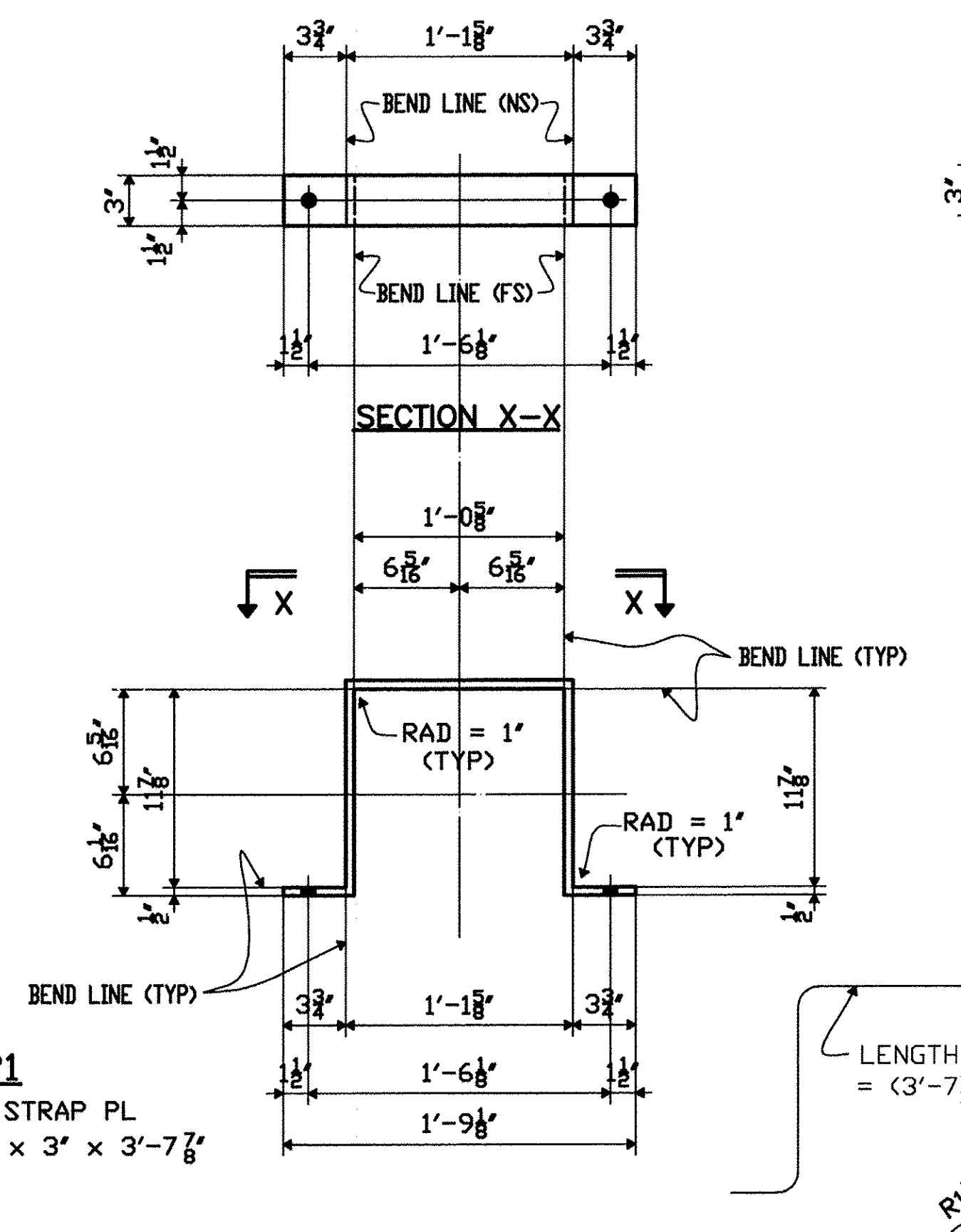


SECTION D

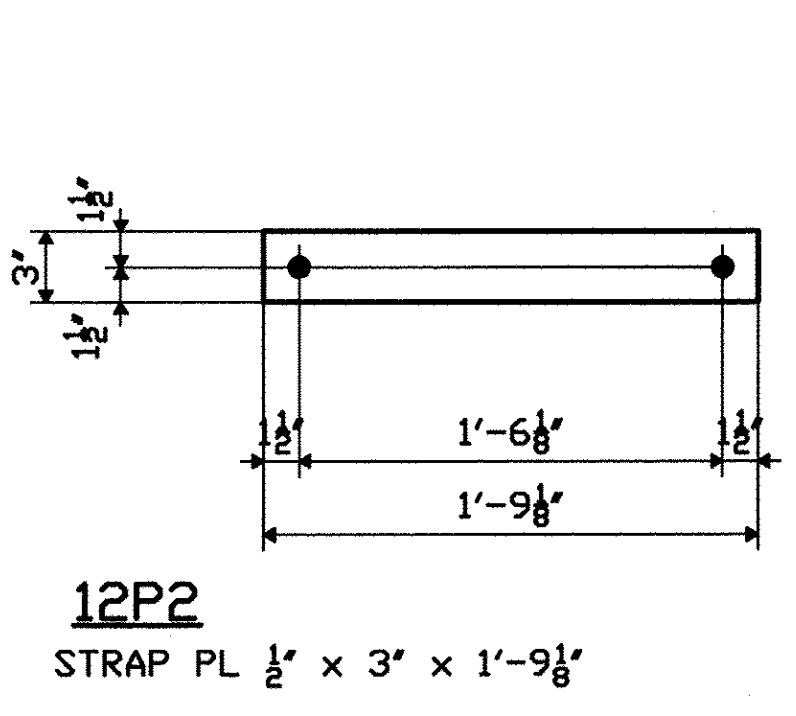


STAGE A		STAGE B		SHOP BILL											
LINE NO.	QTY	MARK	SYMBOL	SECTION	DIM'S	FEET	INCHES	ASSEMBLY MARK	REMARKS	MTRL. SPEC.	MATERIAL APPLICATION	P.O. NO.	QTY	LENGTH	
1	1	12M1									DOWNSPOUT HOPPER				
3	1		PL	$\frac{3}{8}$ x 16	1	1		A12		M270-36	SHN				
4	1		PL	$\frac{3}{8}$ x 3	1	4		C12		M270-36	SHN				
5	2		PL	$\frac{3}{8}$ x 11 1/4	1	1 3/8		D12	BEND	M270-36	SHN				
6	1		TS	12x12x3/8	3	2 7/8		E12	BEV-1E	A500 GR B	3727SA	1			
7	1		PL	$\frac{3}{8}$ x 11 1/4	2	7 3/4		H12	BEV-1E	M270-36	SHN				
8	1		PL	$\frac{3}{8}$ x 11 1/4	3	2 7/8		M12	BEV-1E	M270-36	SHN				
9	1		TS	12x12x3/8	4	10 3/4		N12	BEV-1E	A500 GR B	3727SA	1			
10	1		PL	$\frac{3}{8}$ x 11 1/4	4	4		P12	BEV-1E	M270-36	SHN				
11	1		PL	$\frac{3}{8}$ x 11 1/4	4	10 3/4		T12	BEV-1E	M270-36	SHN				
12	1		L	6x6x1/2	0	4		AA12		M270-36	SHN				
15	4	12P1	PL	$\frac{1}{2}$ x 3	3	7 7/8			BEND	M270-36	SHN				
17	4	12P2	PL	$\frac{1}{2}$ x 3	1	9 1/8				M270-36	SHN				
19	2	12AB1	BAR	$\frac{5}{8}$	0	9			THREADED	A307	JS6501	1			
20	8	12AB2	BAR	$\frac{5}{8}$	0	9			THREADED	A307	JS6501	2			
21			F NUT	$\frac{5}{8}$ HEX						GV	M291	JS6501	1		
22															
23	18	12FP23	F HWASH	$\frac{5}{8}$						GV	F436	JS6501	1		
24															
25															

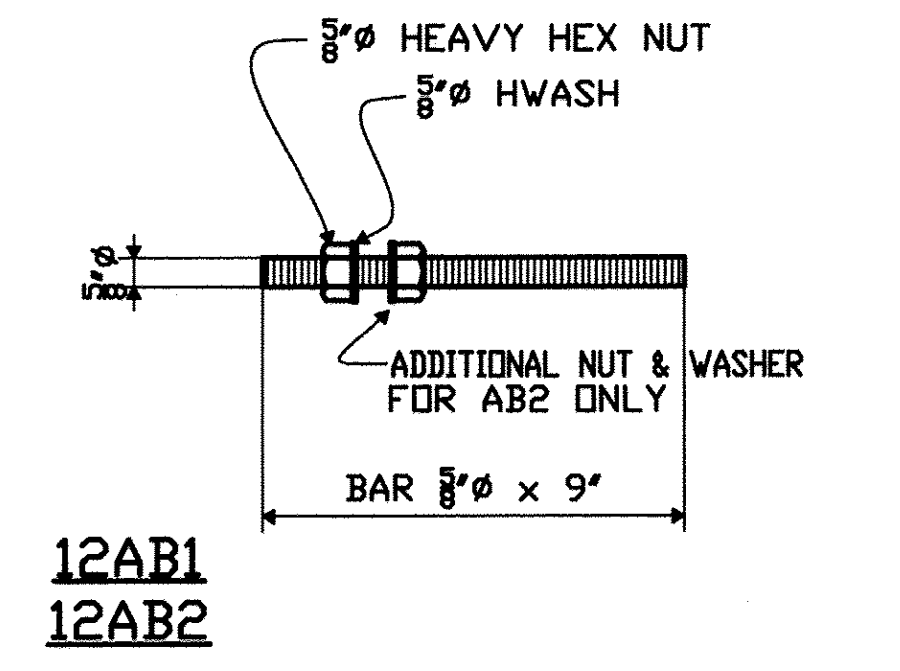
SEE HN1 FOR FABRICATION NOTES



12P1
 BENT STRAP PL
 PL $\frac{1}{2}$ x 3' x 3'-7 7/8"



12P2
 STRAP PL $\frac{1}{2}$ x 3' x 1'-9 1/8"



12AB1
 12AB2

FABRICATED BY COLFAX
 HOLES $\frac{11}{16}$ " SHIP FASTENERS
 SHOP PAINT HOT DIP GALV. PER A123 AFTER FAB.
 SHOP INSPECTION GALV. PER A153 FOR BOLTS, NUTS & WASHERS
 GENERAL NOTES

REVISIONS		
DATE	NO.	BY
07/06/09	R1	PDC/SB

CHANGED FROM PLS TO TS

PROJECT No: ACIM 091-1(33)
 STA. 22+69.92 TO STA. 25+28.14
 BRIDGE No. 3N (NORTHBOUND)
 TOWN OF GUILFORD

ORDER NO. 08-18537H22
 DETAILS OF DOWNSPOUT HOPPER CONN.
 PROJECT I-91 OVER BROAD BROOK AND BROAD BROOK ROAD
 LOCATION WINDHAM COUNTY, VT
 CUSTOMER MEC CONSTRUCTION
CAROLINA STEEL GROUP, LLC.
 MADE BY GM
 CHECKED BY PDC/SB
 SOUND LEADER Precise Drafting Co. Inc.
 DATE 03-09
 SHEET HF12