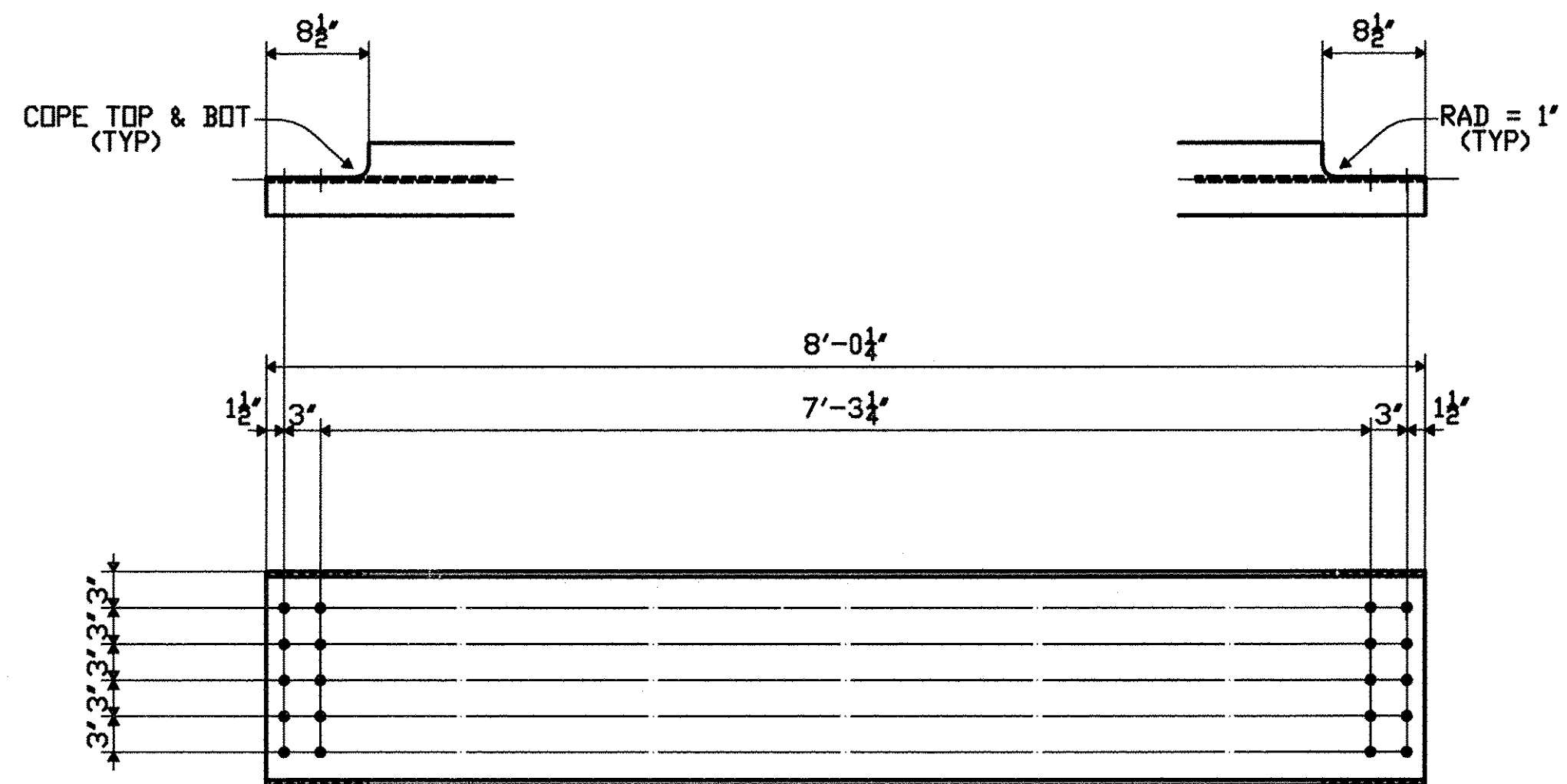


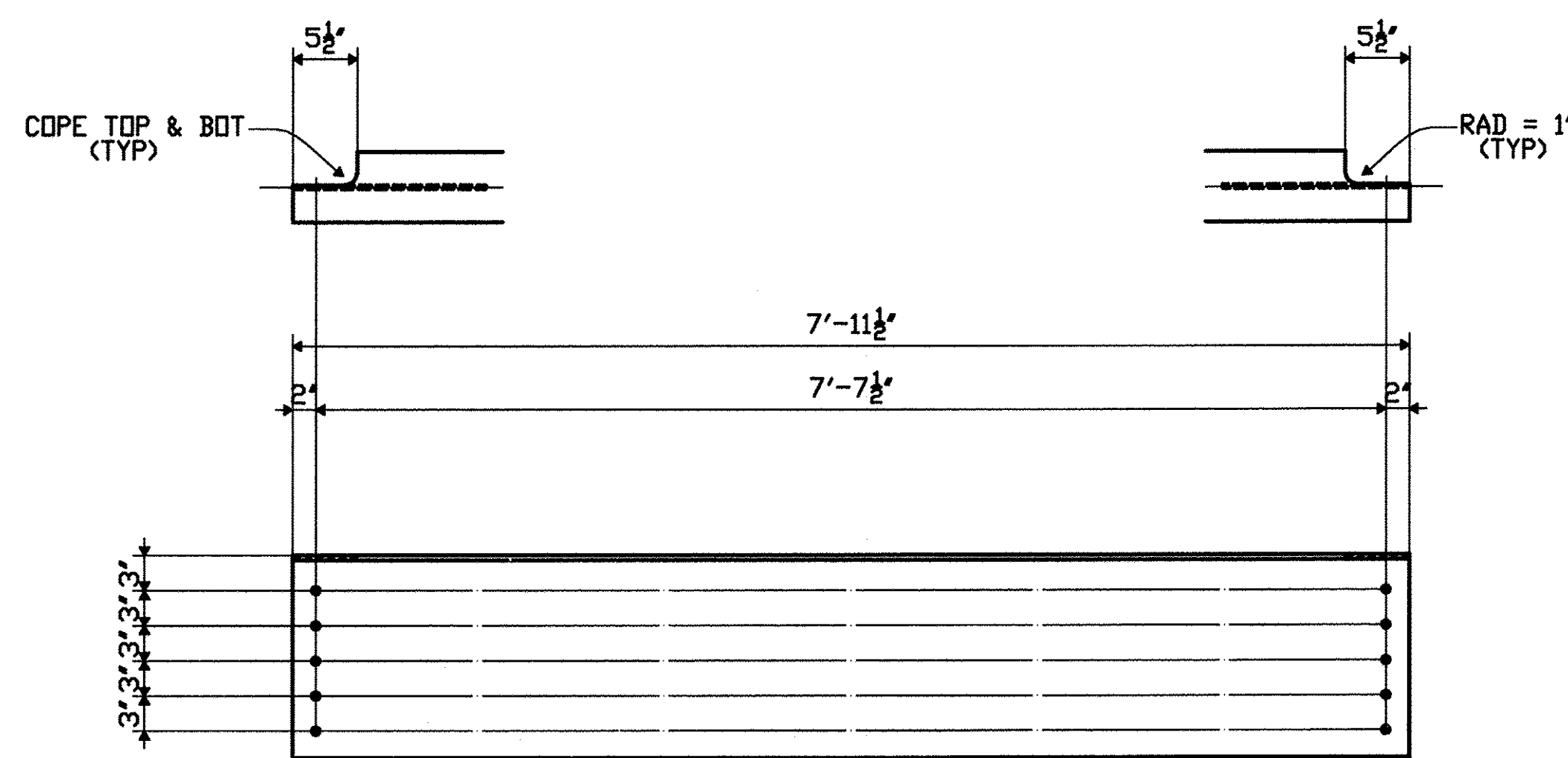
10D1
PAINTED

PAINT NOTE "C"
AREA SHOWN THUS
DENOTES FAYING SURFACE.
APPLY PRIMER ONLY (FS)

PAINT NOTE "A"
(MIST COAT OF PRIMER
ONLY -1.5 MILS DFT)



10D2
UN-PAINTED



10D3
UN-PAINTED

SHOP BILL

STAGE A	STAGE B	LINE NO.	SHIPPING LIST		PCS REQD	DESCRIPTION			LENGTH		ASSEMBLY MARK	REMARKS	MTRL. SPEC.	MATERIAL APPLICATION			
			NO.	MARK		CODE	SYMBOL	SECTION	DIM'S	FEET				INCHES	P.O. NO.	LINE NO.	LENGTH
		1															
		2															
		3															
PAINTED	2	3	4	5	10D1	5	W	18x35	7	6 1/4			M270-50W	6004NY	2		
		4															
NO PAINT	4	6	7	10	10D2	10	W	18x35	8	0 1/4			M270-50W	6004NY	2		
		8															
NO PAINT	24	26	10	50	10D3	50	W	18x35	7	11 1/2			M270-50W	6004NY	3		
NO PAINT	--	10	10	10	10D3	10	W	18x35	7	11 1/2			M270-50W	6004NY	2		
		12															
		13															
		14															
		15															
		16															
		17															
		18															
		19															
		20															
		21															
		22															
		23															
		24															
		25															

DOMESTIC MATERIAL
SEE HN1 FOR FABRICATION NOTES

TVGA CONSULTANTS

NO EXCEPTIONS TAKEN
 FURNISH AS CORRECTED
 REVISE AND RESUBMIT
 REJECTED
 ENGINEER has reviewed Shop Drawings and Samples and gives date when Contractor is required to submit, only for conformance with the information given in the Contract Documents and compatibility with the design concept of the completed Project as a condition of the contract. Such review does not extend to means, methods, techniques, sequences or procedures of construction or to safety precautions and programs incident thereto. Such review does not extend to any LEED certification or accreditation. Contractor is responsible for dimensions to be confirmed and corrected at the job site; for information that pertains solely to the fabrication processes or to techniques of construction; and for coordination of the work of all trades.
 BY: *[Signature]*
 DATE: 7/21/2009

PROJECT No: ACIM 091-1(33)
 STA. 22+69.92 TO STA. 25+28.14
 BRIDGE No. 3N (NORTHBOUND)
 TOWN OF GUILDFORD

FABRICATED BY COLFAX
 HOLES 130
 SHOP PAINT PAINTED PER HN1 FOR ITEMS NOTED
 SHOP INSPECTION
 GENERAL NOTES

REVISIONS			
DATE	NO.	BY	DESCRIPTION
07/08/09	R1	PDC/SB	REVISED NOTATION (BS) TO (FS)

ORDER NO. 08-18537H22
 DETAILS OF DIAPHRAGMS
 PROJECT I-91 OVER BROAD BROOK AND BROAD BROOK ROAD
 LOCATION WINDHAM COUNTY, VT
 CUSTOMER MEC CONSTRUCTION
CAROLINA STEEL GROUP, LLC.
 MADE BY GM
 CHECKED BY PDC/SB
 SOUND LEADER Precision Drilling Co. Inc.
 DATE 09-08
 SHEET HF10