

# SHOP BILL

LINE NO.	SHIPPING LIST		DESCRIPTION	LENGTH		ASSEMBLY MARK	REMARKS	MTRL. SPEC.	MATERIAL APPLICATION		
	NO.	MARK		FEET	INCHES				P.O. NO.	LINE NO.	LENGTH
1											
2	1	7BC1	PLATE GIRDER								
3		1	PL 1 3/8 x 16	42	5 7/8	TFBC1	V	M270-50W	6014NH	3	
4		1	PL 7/8 x 16	58	0 8/8	TFBC2	V	M270-50W	6014NH	4	
5		1	PL 1 3/8 x 16	42	5 7/8	BFBC1	V	M270-50W	6014NH	3	
6		1	PL 1 3/8 x 16	58	0	BFBC2	V	M270-50W	6014NH	1	
7		1	PL 1/2 x 37	66	3	WBC1	V	M270-50W	6014NH	6	
8		1	PL 1/2 x 37	34	3 1/4	WBC2	V	M270-50W	6014NH	8	
9											
10		1	PL 7/8 x 7 3/4	2	6	A7	FIN-2E	M270-50W	6016NH	1	
11		1	PL 7/8 x 7 3/4	2	6	C7	FIN-2E	M270-50W	6016NH	1	
12		1	PL 7/8 x 7 3/4	3	1	C1	FIN-2E	M270-50W	6016NH	1	
13		1	PL 7/8 x 7 3/4	3	1	D1	FIN-2E	M270-50W	6016NH	1	
14		5	PL 1/2 x 5	3	1	E1	TF-2E	M270-50W	6016NH	4	
15											
16		1	BAR 1/4 x 3 3/8	0	10 15/16	X1		M270-50W	SHN		
17											
18											
19											
20											
21											
22											
23											
24											
25											

DOMESTIC MATERIAL  
SEE HN1 FOR FABRICATION NOTES

### TVGA CONSULTANTS

NO EXCEPTIONS TAKEN  REJECTED  
 FURNISH AS CORRECTED  
 REVISE AND RESUBMIT  
 ENGINEER has reviewed Shop Drawings and Samples and other data which Contractor is required to submit, only for conformance with the information given in the Contract Documents and compliance with the design concept of the completed Project as a functioning whole as indicated in the Contract Documents. Such review shall extend to means, methods, techniques, sequences or procedures of construction or to safety precautions and programs incident thereto. Such review does not extend to any LEED certification or accreditation. Contractor is responsible for dimensions to be confirmed and furnished at the jobsite for information that pertains solely to the fabrication processes or to techniques of construction and for coordination of the work of all trades.

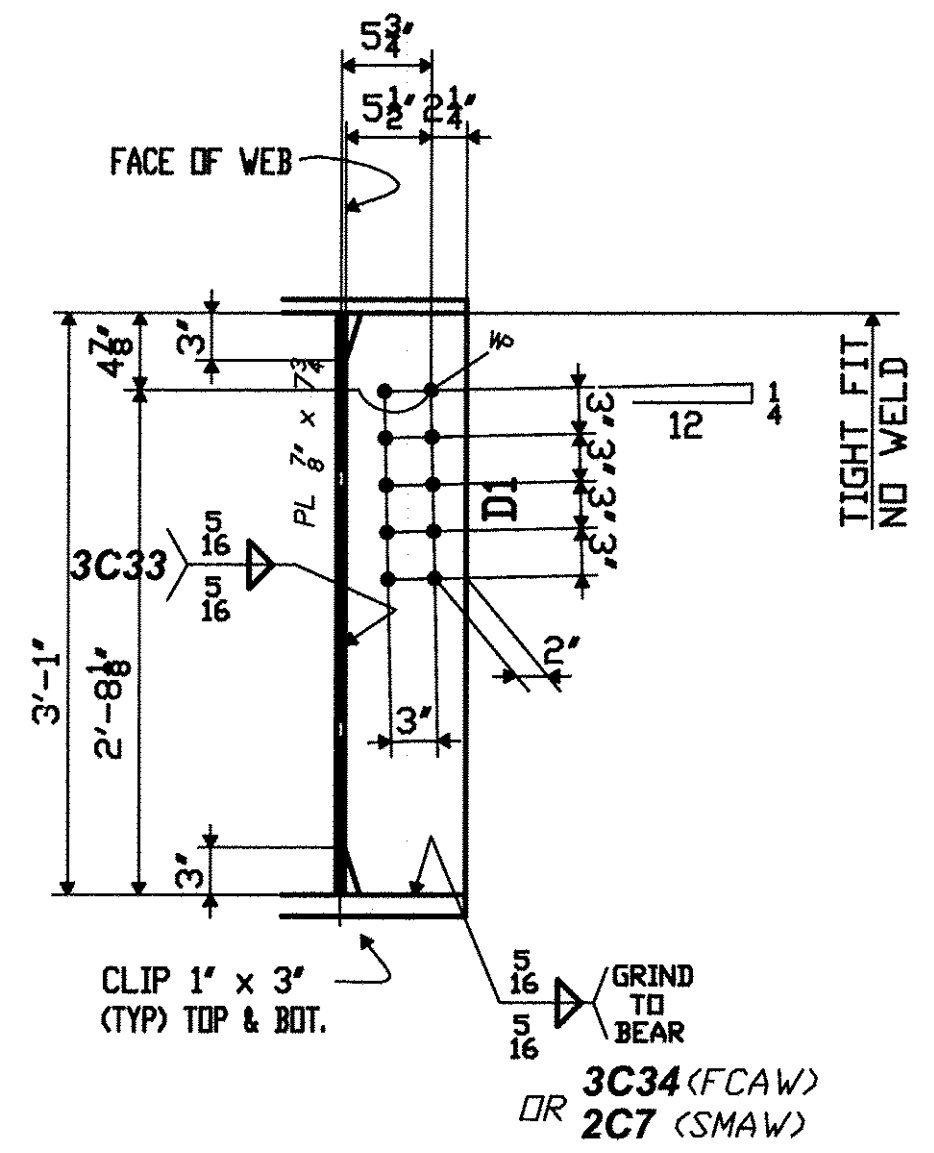
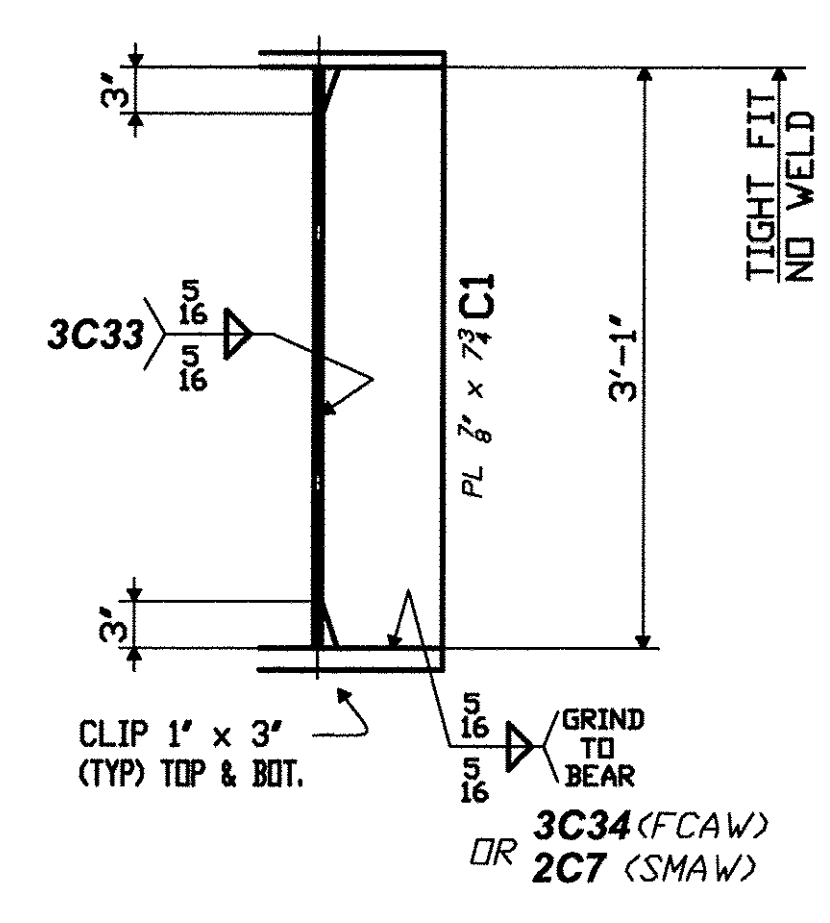
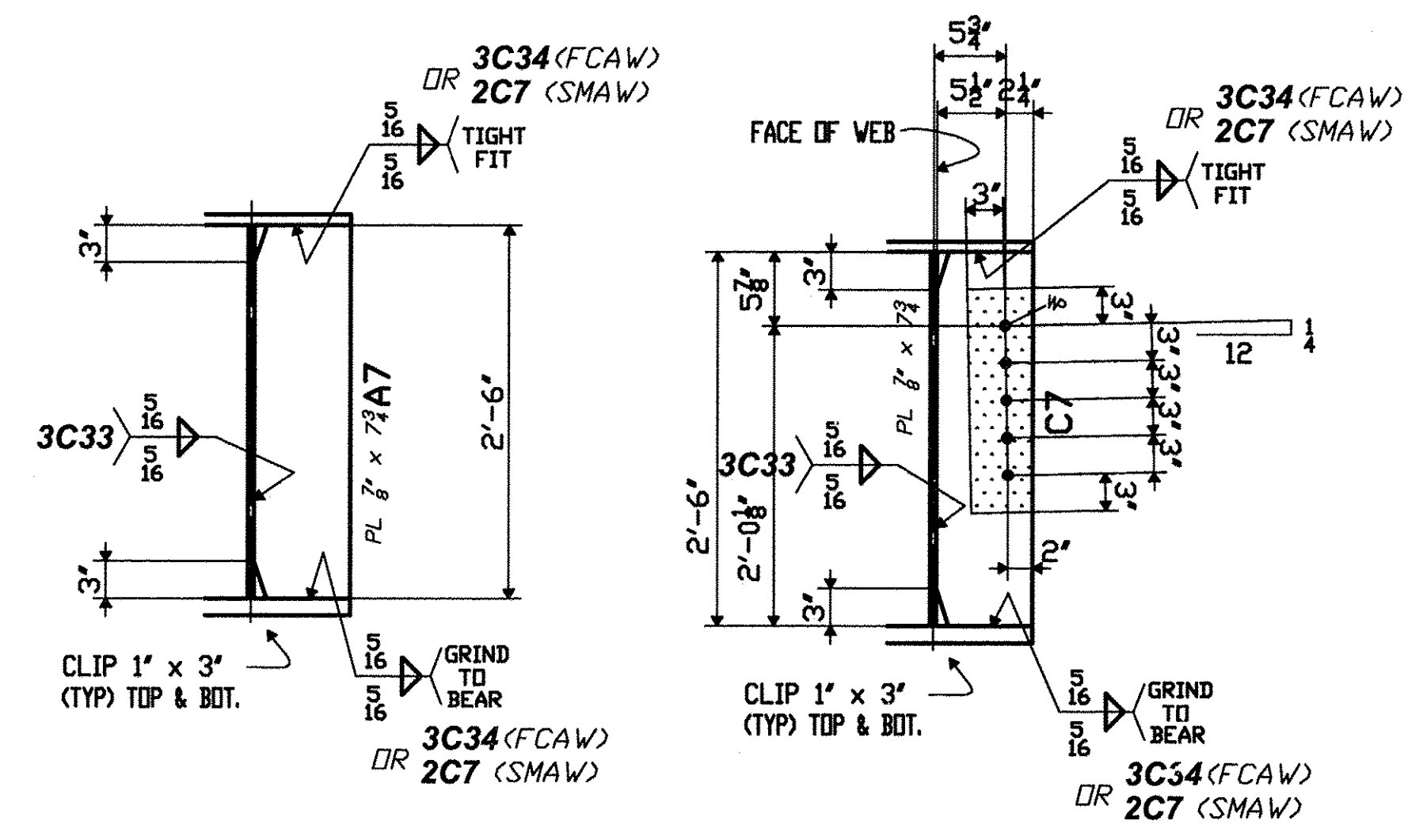
BY: *[Signature]*  
DATE: 11/21/2008

PROJECT No: ACIM 091-1(33)  
 STA. 22+69.92 TO STA. 25+28.14  
 BRIDGE No. 3N (NORTHBOUND)  
 TOWN OF GUILFORD

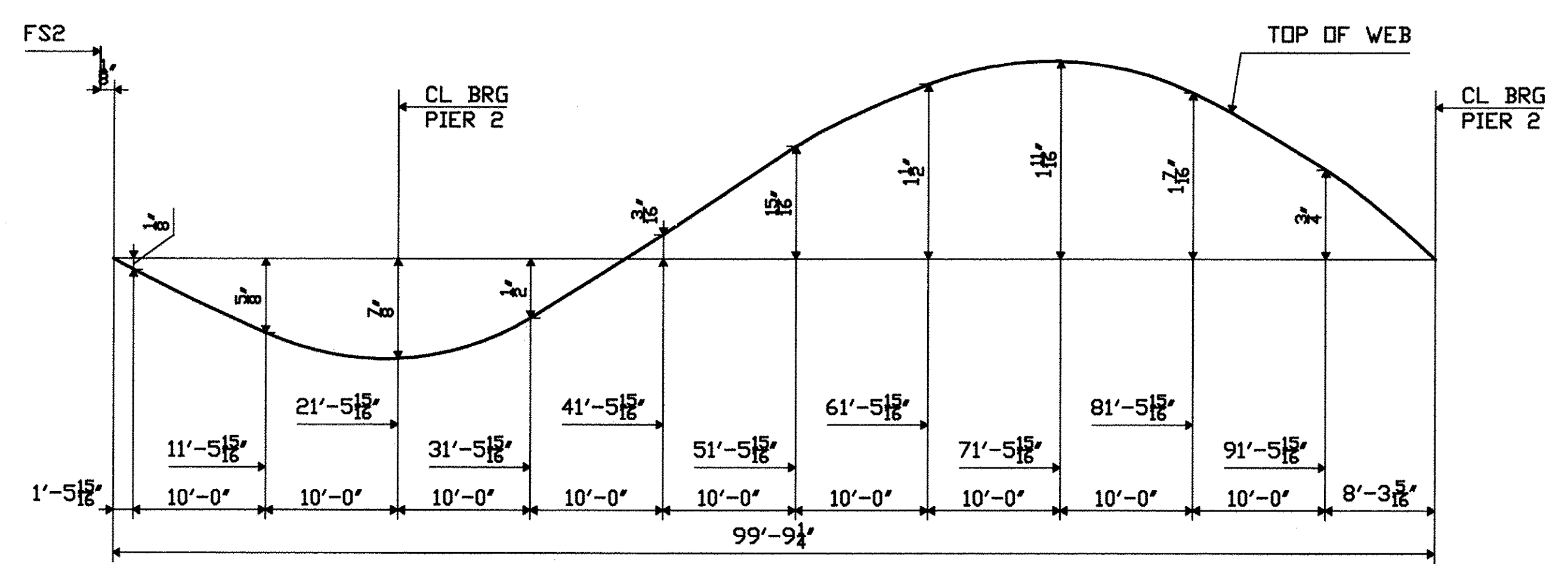
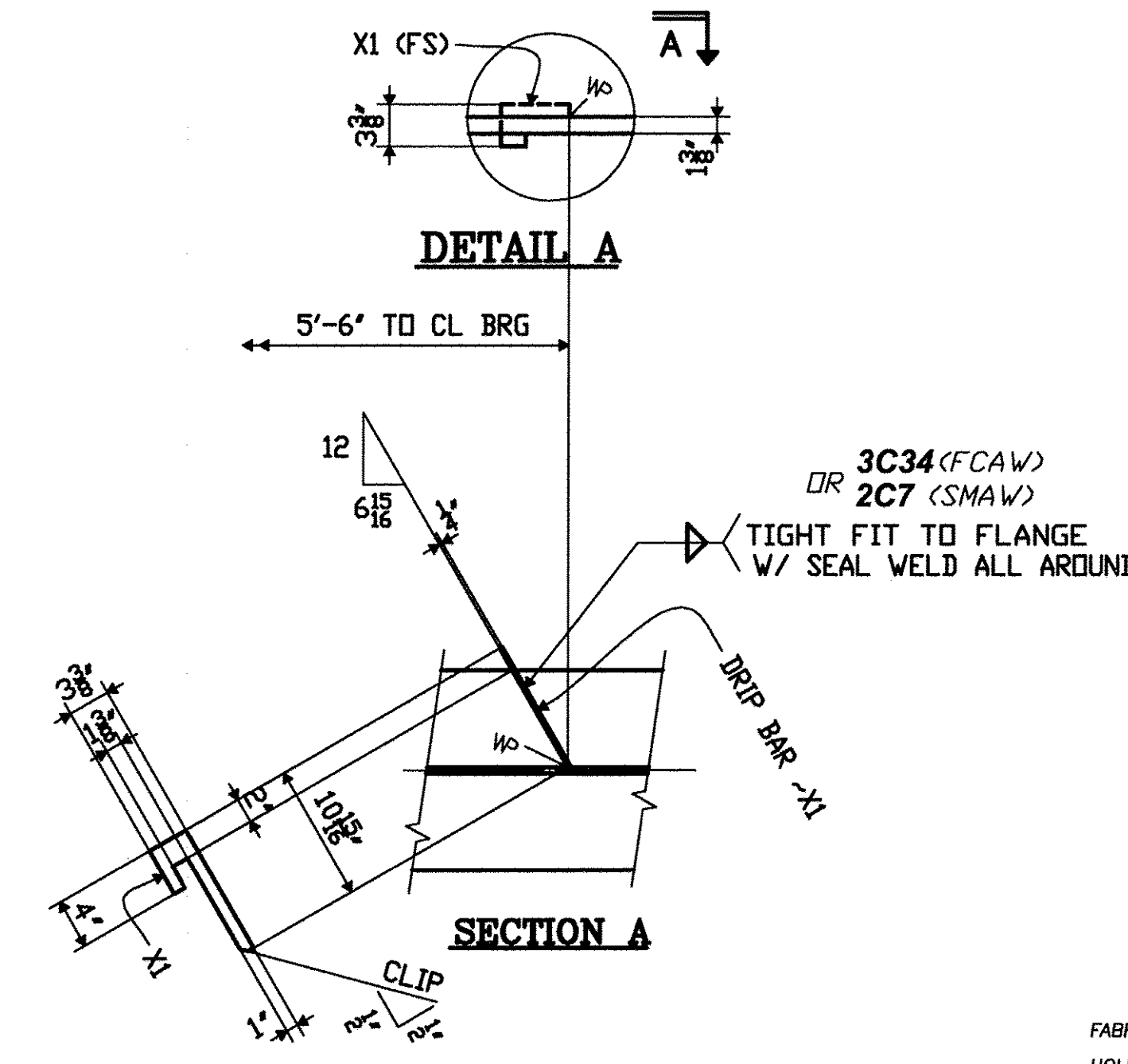
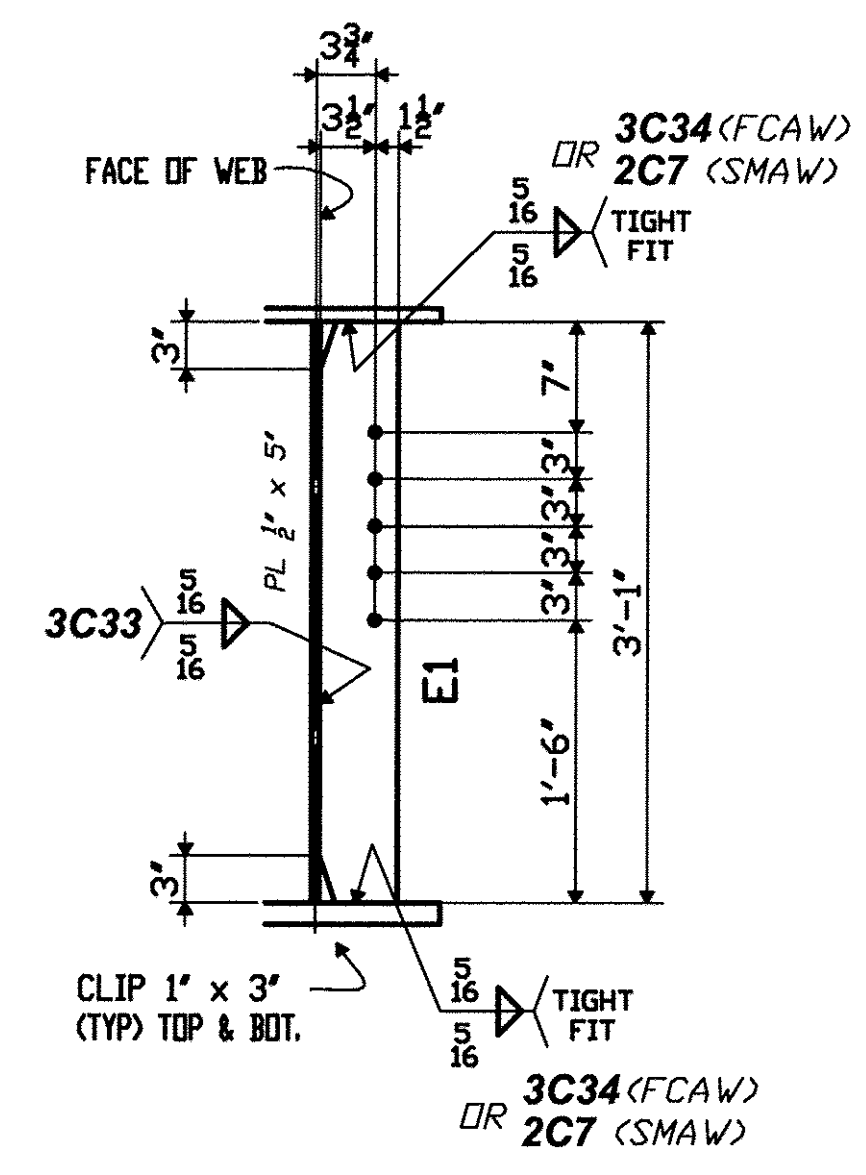
FABRICATED BY: COLFAX  
 HOLES: 12-0  
 SHOP FASTENERS: PARTIAL PAINT PER HN1 & AS NOTED  
 SHOP PAINT: PARTIAL PAINT PER HN1 & AS NOTED  
 SHOP INSPECTION: WORK THIS SHEET w/HF7A  
 GENERAL NOTES: WORK THIS SHEET w/HF7A

DATE	NO.	BY	REVISIONS
07/08/08	R1	PDC/SB	ADDED CONTACT SURFACE

ORDER NO.	08-18537H22
DETAILS OF	PL GIRDER - SPAN BC
PROJECT	I-91 OVER BROAD BROOK AND BROAD BROOK ROAD
LOCATION	WINDHAM COUNTY, VT
CUSTOMER	MEC CONSTRUCTION
	CAROLINA STEEL GROUP, LLC.
MADE BY	GM
CHECKED BY	PDC/SB
SOUND LEADER	Trace Drafting Co. Inc.
DATE	09-08
SHEET	HF7B



**PAINT NOTE "C"**  
 AREA SHOWN THUS  
 DENOTES FAYING SURFACE.  
 APPLY PRIMER ONLY (CS)  
 (CS) DENOTES 'CONTACT SURFACE'



CAMBER DIAGRAM