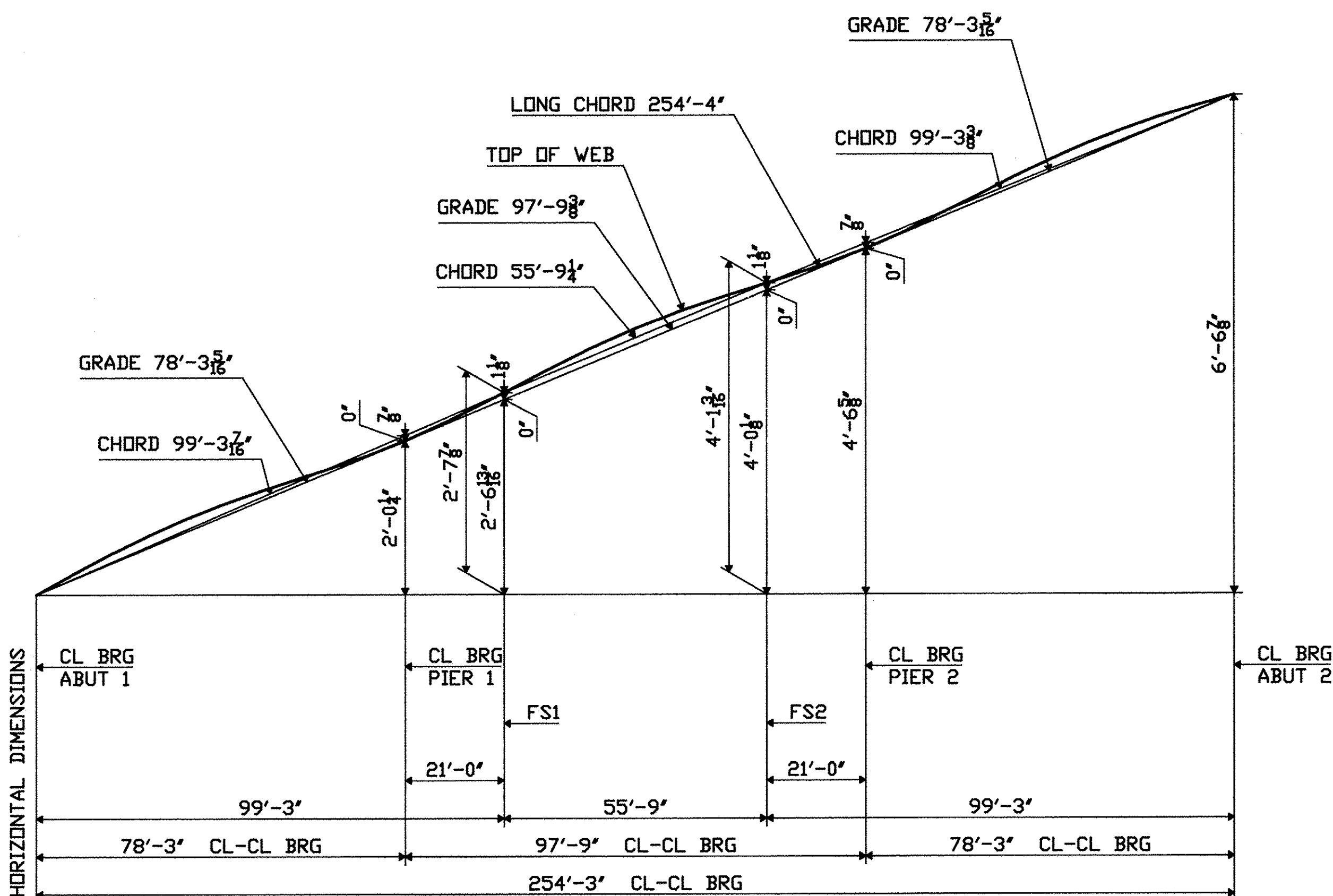


CAMBER DIAGRAM - WINDHAM CO, VT 18537H32 G1 THRU G5 X-Scale 0.009832842 Y-Scale 1.802856474

### CAMBER DIAGRAM - LINES 1 THRU 5



Grade Diagram - WINDHAM CO, VT 18537H32 G1 THRU G5 X-Scale 0.009933137 Y-Scale 0.063379068

### GRADE DIAGRAM - LINES 1 THRU 5

**BLOCKING NOTE**

-GIRDERS SHALL BE SHOP ASSEMBLED IN THE CAMBERED POSITION, WITH THE BEARINGS & SPLICES BLOCKED TO THE DIMENSIONS SHOWN, WITHOUT INDUCING STRESS INTO THE MEMBERS. FULLY ASSEMBLE AND CHECK ALL BLOCKING AND CAMBER ORDINATES IN THE SHOP, MAKING ADJUSTMENTS WHERE NECESSARY. HOLES SHALL BE DRILLED FROM THE SOLID, AND MATCH MARKED WITH THE SPLICE MATERIAL ASSEMBLED TO GIRDERS.

-FOR FIELD ERECTION, GIRDERS SHALL BE PINNED AND BOLTED, AND SPLICE ELEVATIONS SHALL BE CHECKED BEFORE BOLTS ARE TIGHTENED.

-SHIPPING BOLTS SHALL BE MACHINE BOLTS.

-ALL SHIPPING BOLTS SHALL BE REMOVED AND DISCARDED.

### DEFINITION OF TERMS

-ALL DIMENSIONS IN THE GRADE AND CAMBER DIAGRAMS EXCEPT THOSE IDENTIFIED OTHERWISE, ARE ALONG THE LONG CHORD. THOSE IDENTIFIED BELOW ARE ALONG THE PLANES THROUGH THE ACTUAL ELEVATIONS.

-LONG CHORD - FROM CL END BRG TO CL END BRG.

-GRADE AND CAMBER DIAGRAMS

GRADE LINE - FROM CL BRG TO CL BRG.

CHORD LINE - FROM CL BRG TO CL NEAREST FIELD SPLICE, OR FROM CL F. SPLICE TO CL F. SPLICE.

### TVGA CONSULTANTS

NO EXCEPTIONS TAKEN  REJECTED  
 FURNISH AS CORRECTED  
 REVISE AND RESUBMIT  
 ENGINEER has reviewed Shop Drawings and Samples and other data which Contractor is required to submit, only for conformance with the information given in the Contract Documents and compatibility with the design concept of the completed Project as a functioning whole as indicated in the Contract Documents. Such review is not intended to insure, in any way, the accuracy, appropriateness, sufficiency or procedures of construction or to safety precautions and programs incident thereto. Such review is not intended to constitute an endorsement or approval. Contractor is responsible for information that pertains solely to the fabrication process or to techniques of construction, and for coordination of the work of all trades.

BY: *[Signature]*  
 DATE: 7/1/2005

PROJECT No: ACIM 091-1(33)  
 STA. 22+47.71 TO STA. 25+05.93  
 BRIDGE No. 3S (SOUTHBOUND)  
 TOWN OF GUILFORD

FABRICATED BY	NASH
HOLES	SHOP FASTENERS
SHOP PAINT	
SHOP INSPECTION	
GENERAL NOTES	
ORDER NO.	08-18537H32
DETAILS OF	GRADE & CAMBER DIAGRAMS
	- LINES 1 THRU 5
PROJECT	I-91 OVER BROAD BROOK AND BROAD BROOK ROAD
LOCATION	WINDHAM COUNTY, VT
CUSTOMER	MEC CONSTRUCTION
	CAROLINA STEEL GROUP, LLC.
MADE BY	VS
CHECKED BY	PDC/SB
SEAL LEADER	Precise Drafting Co., Inc.
DATE	09-09
SHEET	HE103