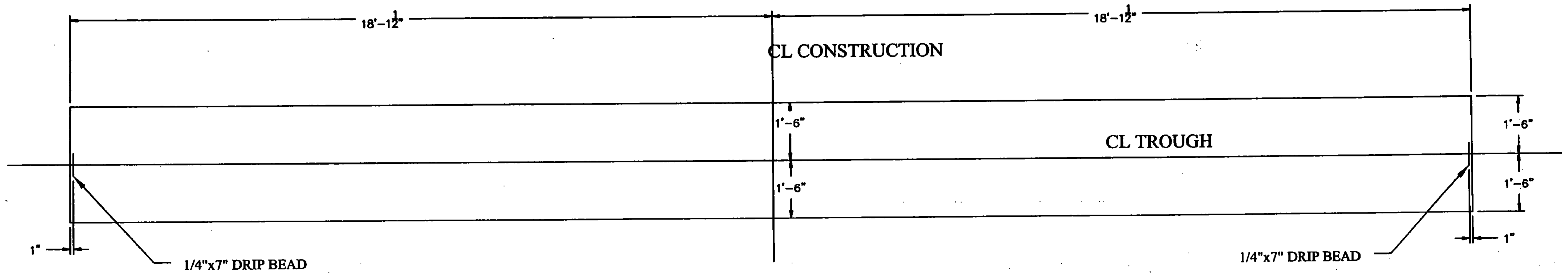


FABRIC TROUGH PROFILE



(1) - 5T1 TROUGH

BILL OF MATERIALS				
QTY	MARK	SHAPE	LENGTH	REMARKS
1	5T1	TROUGH		
1		Preformed Fabric Material 3 Ply x 36" x 36'-3"		

TVGA CONSULTANTS

- NO EXCEPTIONS TAKEN REJECTED
 FURNISH AS CORRECTED
 REVISE AND RESUBMIT

ENGINEER has reviewed Shop Drawings and Samples and other data which Contractor is required to submit, only for conformance with the information given in the Contract Documents and compatibility with the design concept of the completed Project as a functioning whole as indicated in the Contract Documents. Such reviews do not extend to means, methods, techniques, sequences or procedures of construction or to safety precautions and programs incident thereto. Such reviews do not extend to any LEED certification or accreditation. Contractor is responsible for dimensions to be confirmed and correlated at the job site; for information that pertains solely to the fabrication processes or to techniques of construction; and for coordination of the work of all trades.

BY: *[Signature]*
DATE: 3/31/2009

REV NO.	DATE	DESCRIPTION
1	3-25-2009	REVISED PER APPROVAL COMMENTS
0	11-24-2008	SUBMITTED FOR APPROVAL

HOLES AS NOTED
MATERIAL: AASHTO M 270 GRADE 80 GALV

DRAWING COVERS	
TROUGH LAYOUT (3S)	
PROJECT	GULFORD (M 091-1(3S))
LOCATION	I-91 OVER BROAD BROOK & BROAD BROOK ROAD
ENGINEER	VERMONT AGENCY OF TRANSPORTATION
CUSTOMER	J.J. McDONALD, INC.
MERRIMACK SHEET METAL	
119 HALL STREET CONCORD NH 03301	
Tel. 603.224.7766 Fax 603.224.7925	
DRAWN BY:	RL
CHECKED BY:	JD
JOB NO:	#2353
DWG:	F5