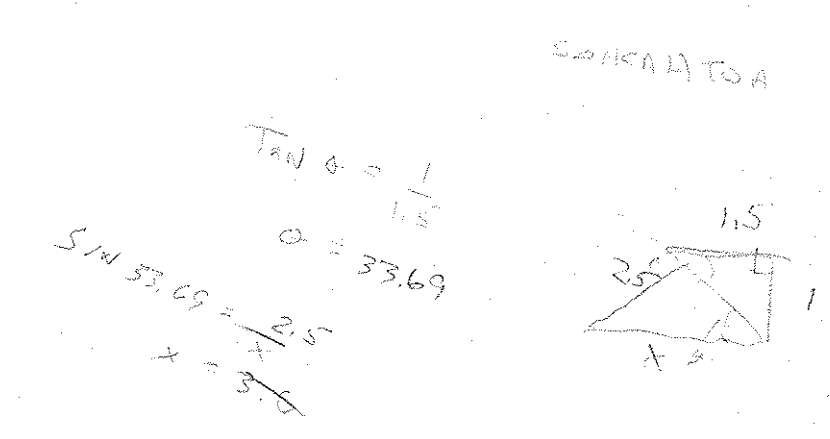
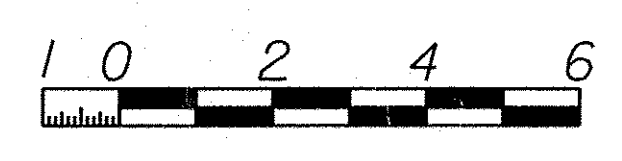
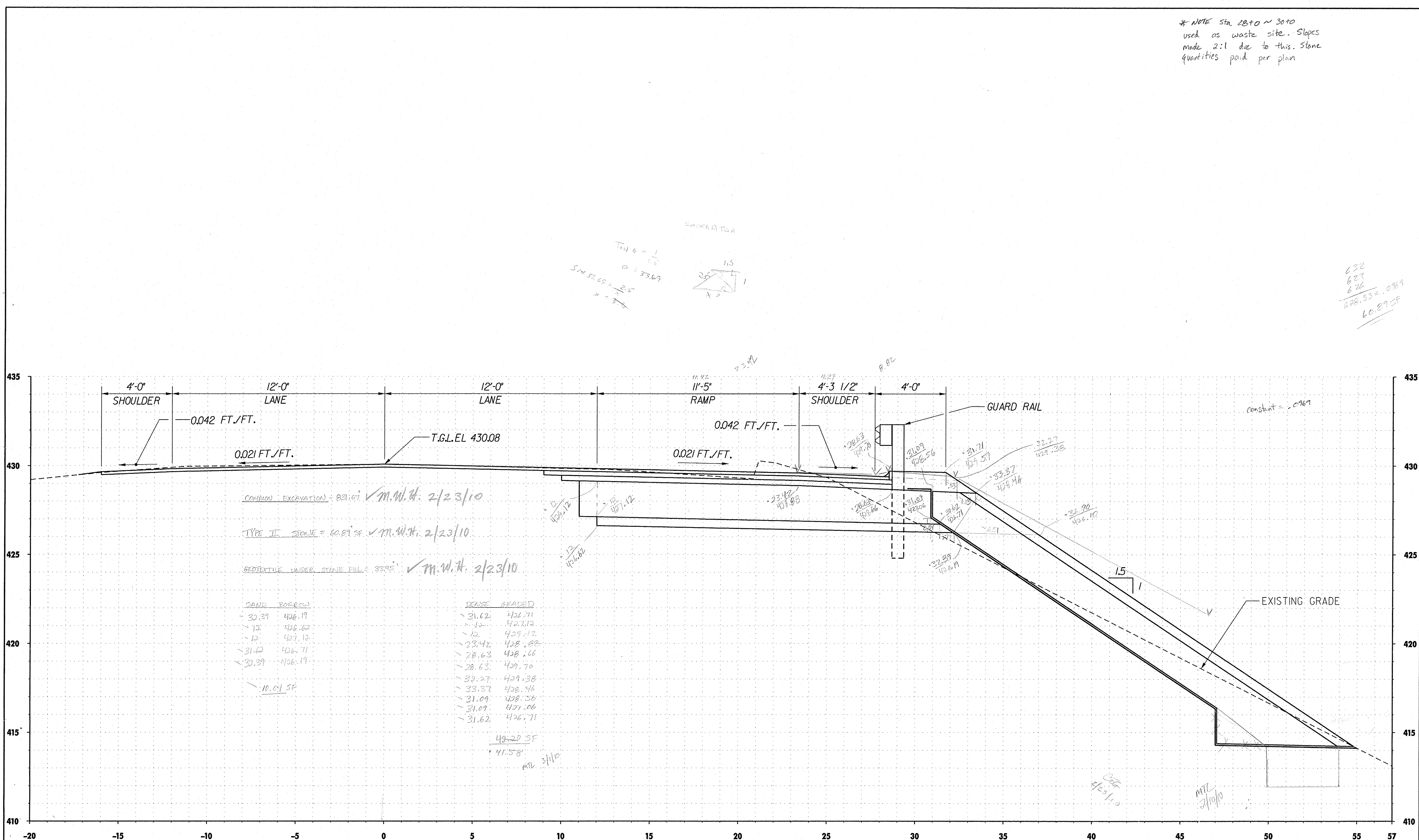


* NOTE Sta 28+0 ~ 30+0
used as waste site. Slopes
made 2:1 due to this. Stone
quantities paid per plan



632
 627
 626
 638.33 x 0.989
 60.89 SF



TVGA ENGINEERING, SURVEYING, P.C.

STATE OF VERMONT AGENCY OF TRANSPORTATION			
Designed By	Date	Drawn By	Bridge Design Supervisor
Checked By	Date		Date
Town Of	Bridge No.	PROJECT	PROJECT NO.
Highway No.	Log Sta.	GULLFORD	ACT09091-1(33)
	Surv. Sta.	TVGA CAD Drawing No.	Date
		Bridge Sheet No.	Sheet 12 of 17