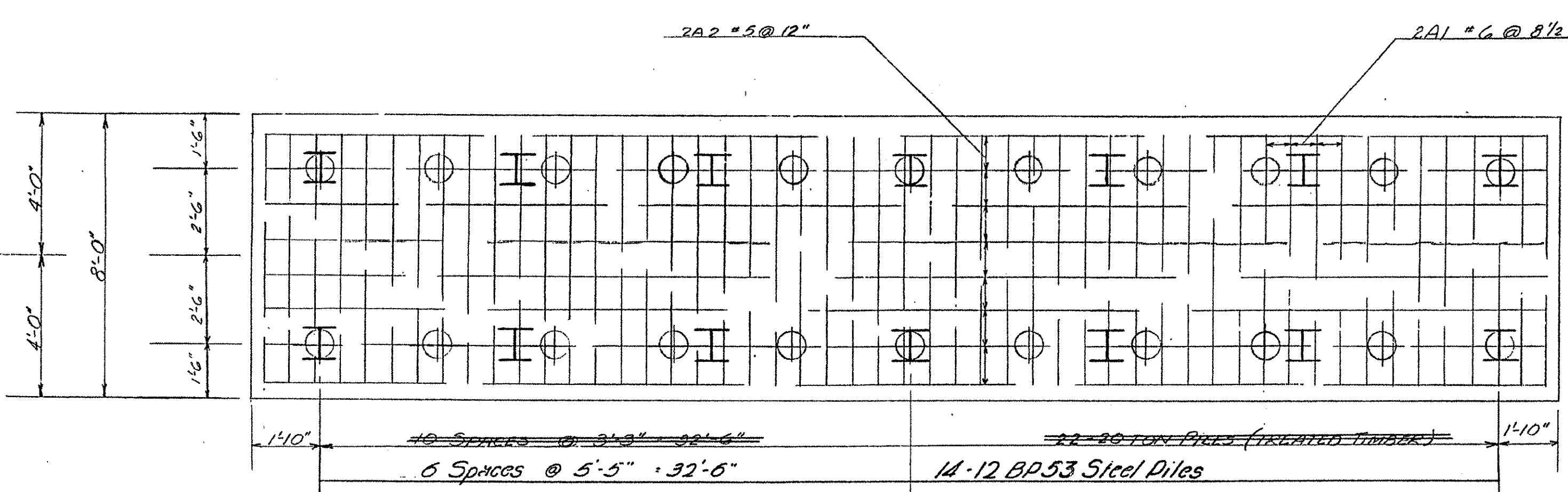
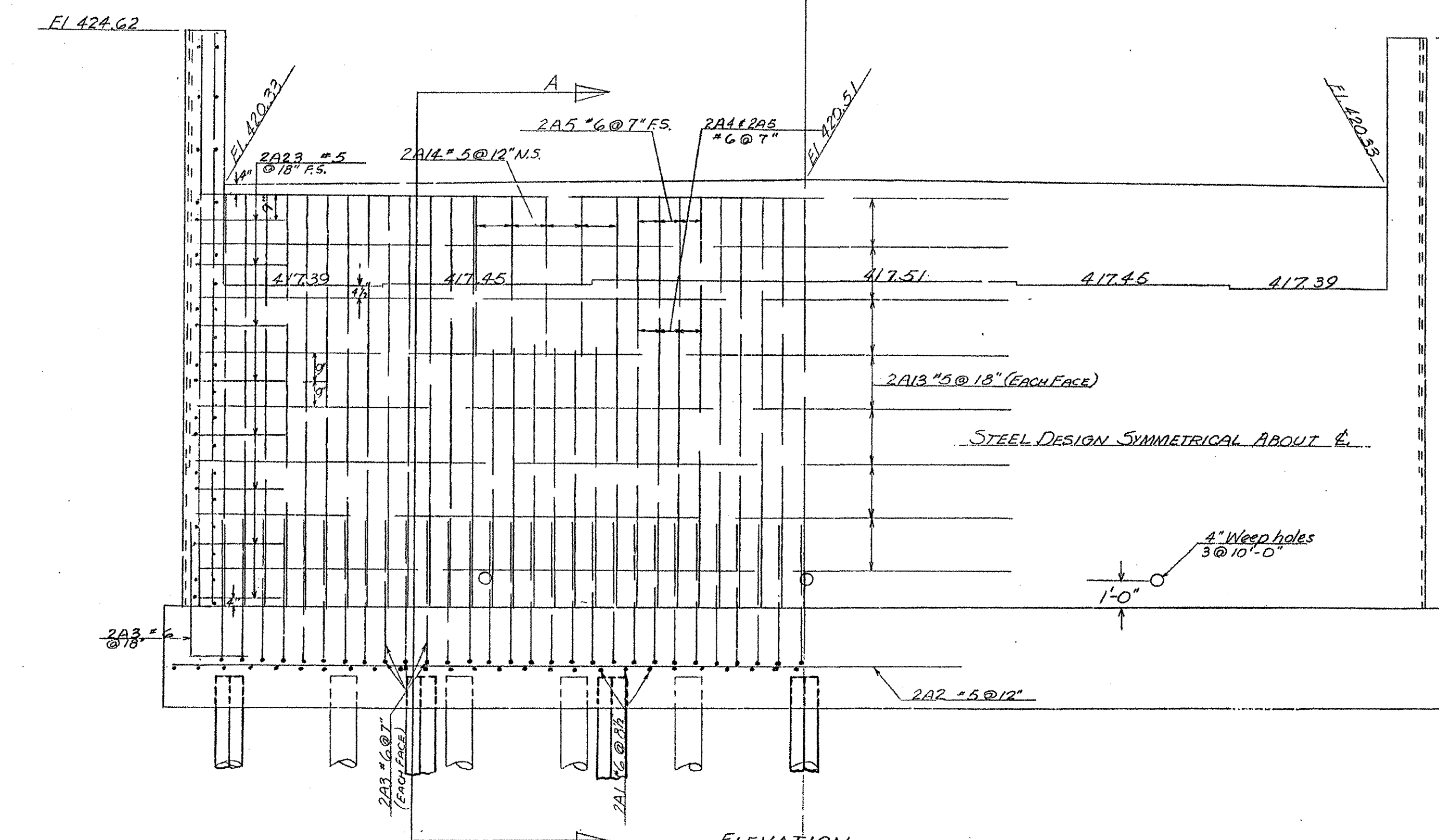


PLAN

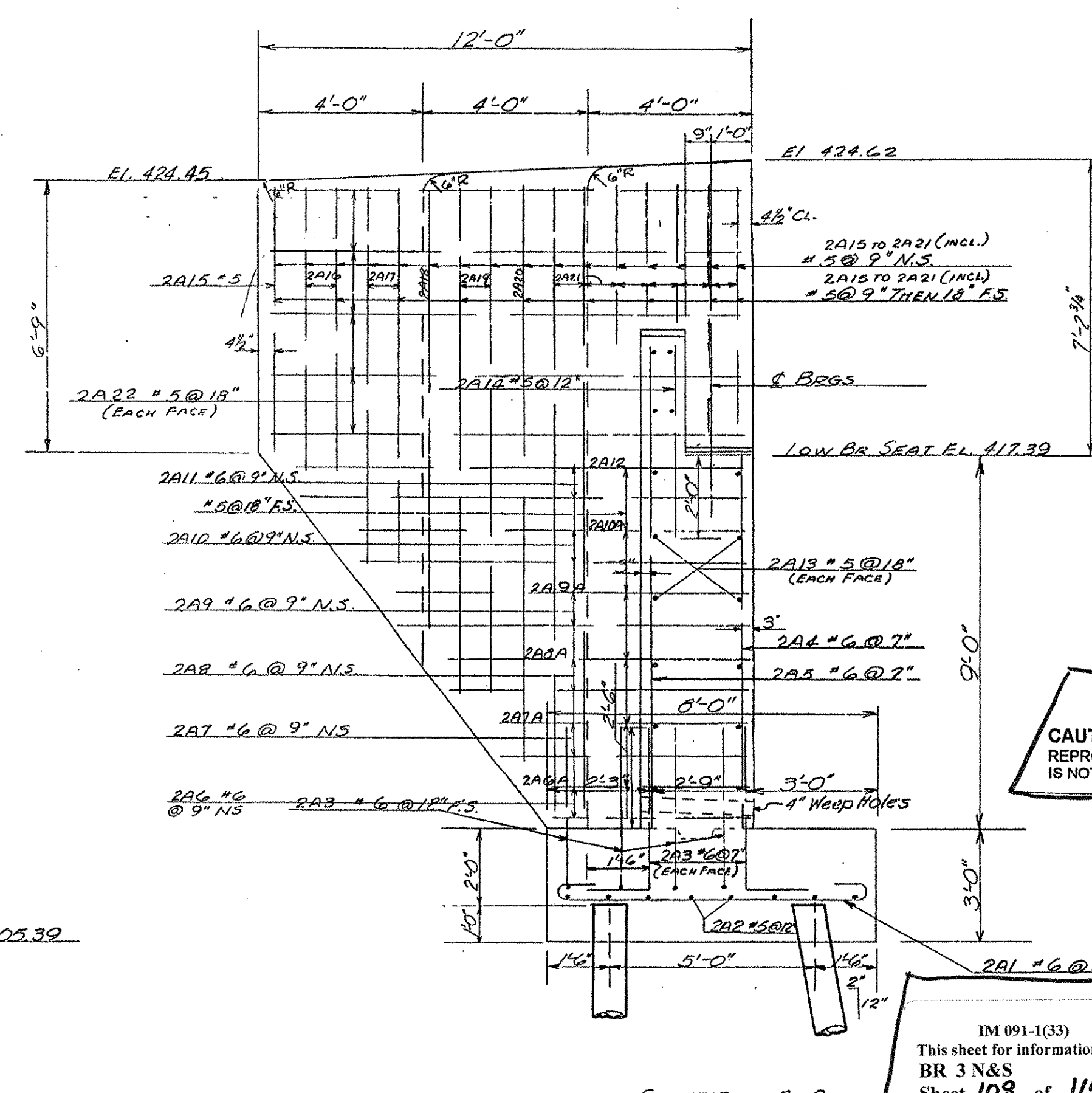


PLAN OF FOOTING

NOTES:  
 FOR ESTIMATING PURPOSES THE LENGTH OF PILES IS ASSUMED TO BE 60'.  
 FILL UNDER THE ABUTMENT TO BE MADE TO APPROXIMATE ELEV. 406.50, PILES DRIVEN THROUGH IT, THEN EXCAVATION MADE TO BOTTOM OF FOOTING ELEVATION.  
 ALL EXPOSED EDGES SHALL BE CHAMFERED 1/4".



ELEVATION



SECTION A-A

LIST OF QUANTITIES  
 (ONE BRIDGE ONLY)

ITEM	DESCRIPTION	NET	OVER. NET	TOTAL	FIN.
107	STRUCTURE EXCAVATION	32	3	35	16
204	SUB-BASE OF CRUSHED ROCK (200)	151	23	174	212
401-B	CONCRETE CLASS "B"	70	4	82	78.3
402	REIN. STEEL (SEE RE-STEEL SHEET)				
202-B	TREATED TIMBER PILING	1920		1920	
526	RIP-RAP FOR BANK PROTECTION	670	67	737	700
407	ASPHALTIC ARMASTOS COATING	74		74	6
504	Steel Piling (Supp. Agree. 5-6-58)				82
					8.39

Quantity is for two bridges.  
 ALL PILES SHALL BE DRIVEN TO THE LENGTHS CALLED FOR ON THE PLANS EXCEPT AS APPROVED IN WRITING BY THE ENGINEER, BUT UNDER ALL CIRCUMSTANCES, AT LEAST INTO HARDPAN. THE CARRYING CAPACITY DEVELOPED SHALL NOT BE LESS THAN 20 TONS. FILL, THROUGH WHICH PILES ARE TO BE DRIVEN, SHALL CONTAIN NO ROCKS.

CAUTION:  
 REPRODUCTION  
 IS NOT TO SCALE

STATE OF VERMONT  
 DEPARTMENT OF HIGHWAYS

TOWN OF GUILFORD

ROUTE NO. INTERSTATE LOG STA.

DETAILS OF ABUT # 2

@ STATION 328+22

SCALE 3/8" = 1'-0"

SURVEYED BY POGAR

DRAWN BY RLB CHECKED BY HES

PROJECT NO. I-901-1(6)

SHEET 108 OF 114

IM 091-1(33)  
 This sheet for information only.  
 BR 3 N&S  
 Sheet 108 of 114