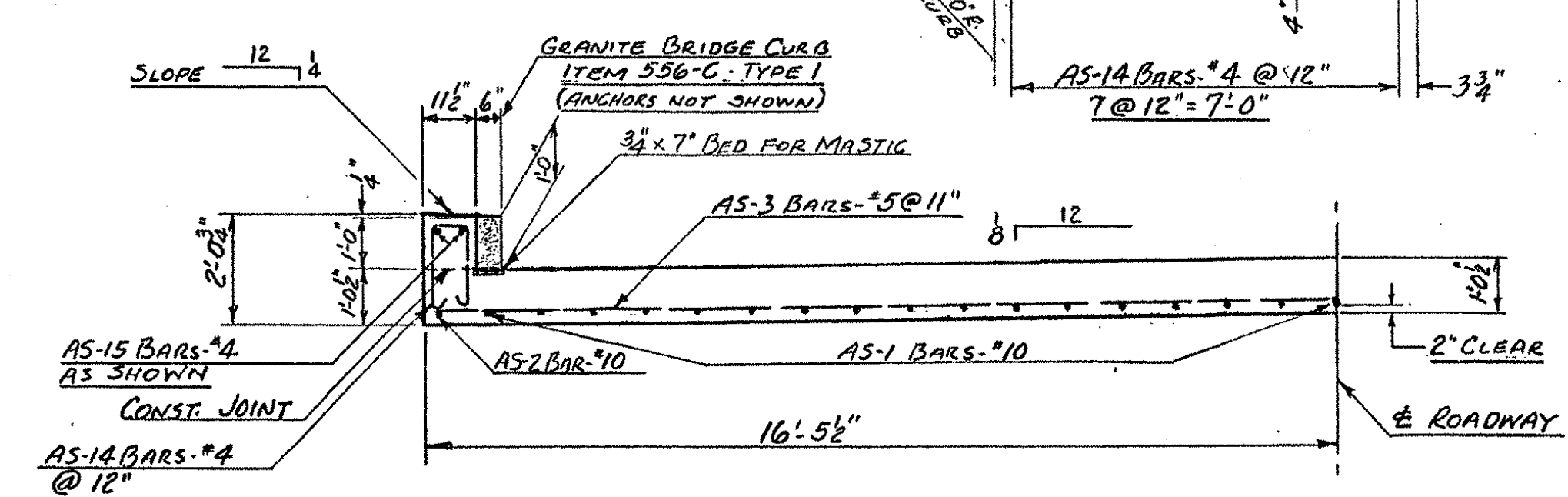
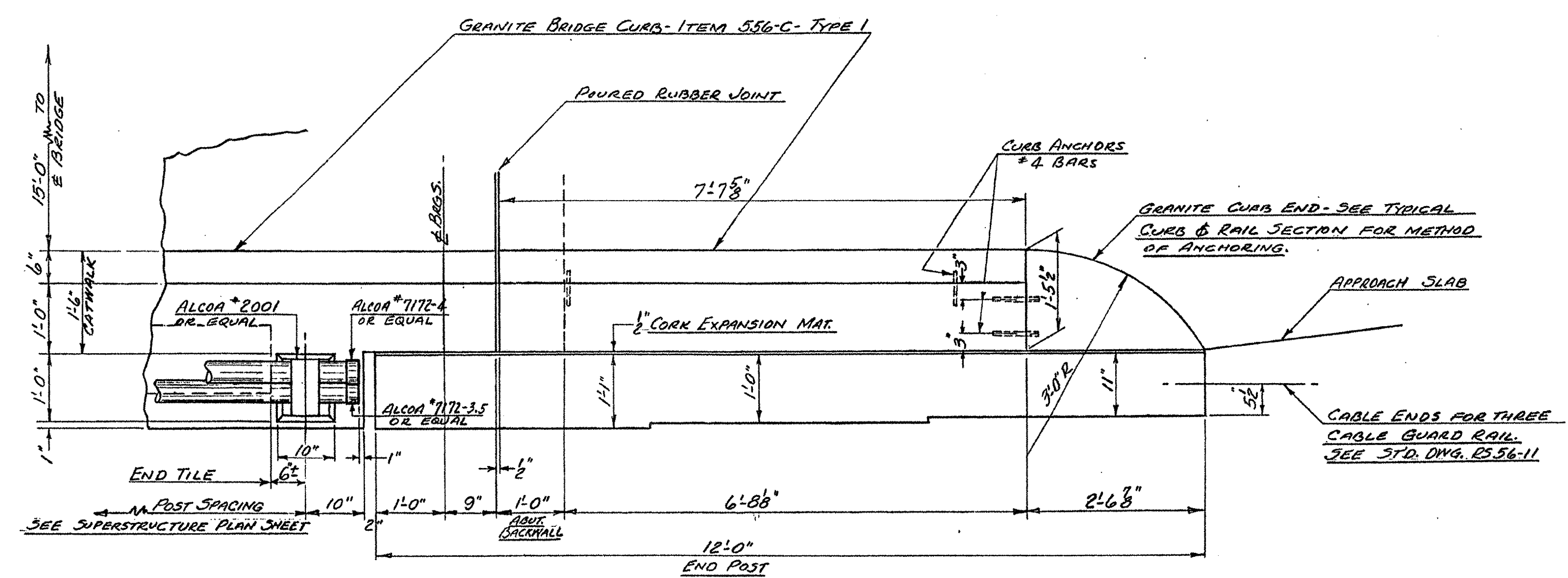


APPROACH SLAB  
PLAN  
SCALE: 3/8"=1'-0"

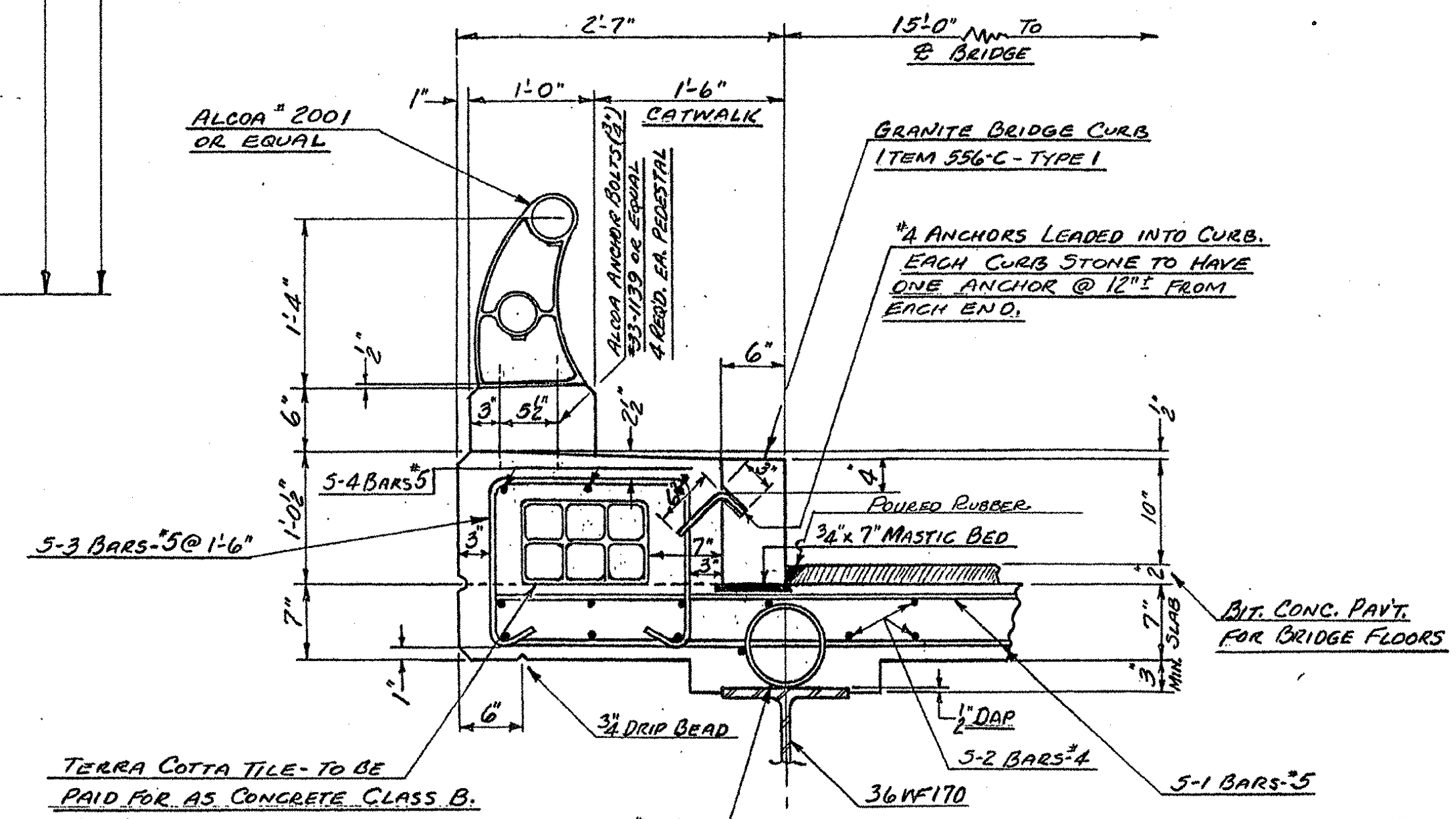


SECTION A-A  
SCALE: 3/8"=1'-0"



DETAIL B  
(FOR LOCATION, SEE SUPERSTRUCTURE PLAN)  
SCALE: 3/8"=1'-0"

NOTE:  
TOP RAIL - 4" O.D. x 3/8" WALL  
BOTTOM RAIL - 3 1/2" O.D. x 3/8" WALL



TERRA COTTA TILE - TO BE PAID FOR AS CONCRETE CLASS B. NO VOLUME DEDUCTION FOR SPACE OCCUPIED BY TILE. RUNS OF TILE TO STOP AT 12" FROM ENDS OF CATWALKS, EXCEPT SHOWN TYPICAL CURB & RAIL SECTION ON BRIDGE.  
SCALE: 1"=1'-0"

NOTE:  
ALL #5 BARS SHOWN ARE BILLED WITH SUPERSTRUCTURE

Thickness of wall bottom rail revised 8/7/57 EMB

CAUTION: REPRODUCTION IS NOT TO SCALE

IM 091-1(33)  
This sheet for information only.  
BR 3 N&S  
Sheet 104 of 114

STATE OF VERMONT  
DEPARTMENT OF HIGHWAYS

TOWN OF GUILFORD  
ROUTE NO. INTERSTATE LOG STA.  
APPROACH SLAB, CURB ENDS, &  
TYPICAL CURB & RAIL SECTION

ESTIMATED QUANTITIES

ITEM NO.	DESCRIPTION	NET	OVER	TOTAL	FINAL
361-B	BIT. CONC. PVT.	15.5	2.5	18	15.5
401-B	CONCRETE - CLASS B	51	3	54	50.6
402	REIN. STEEL (SEE REIN. ST. DETS.)				

SCALE AS NOTED  
SURVEYED BY FOGAR  
DRAWN BY R.T.B. CHECKED BY HES  
PROJECT NO. I-001-1(6)  
SHEET 104 OF 114