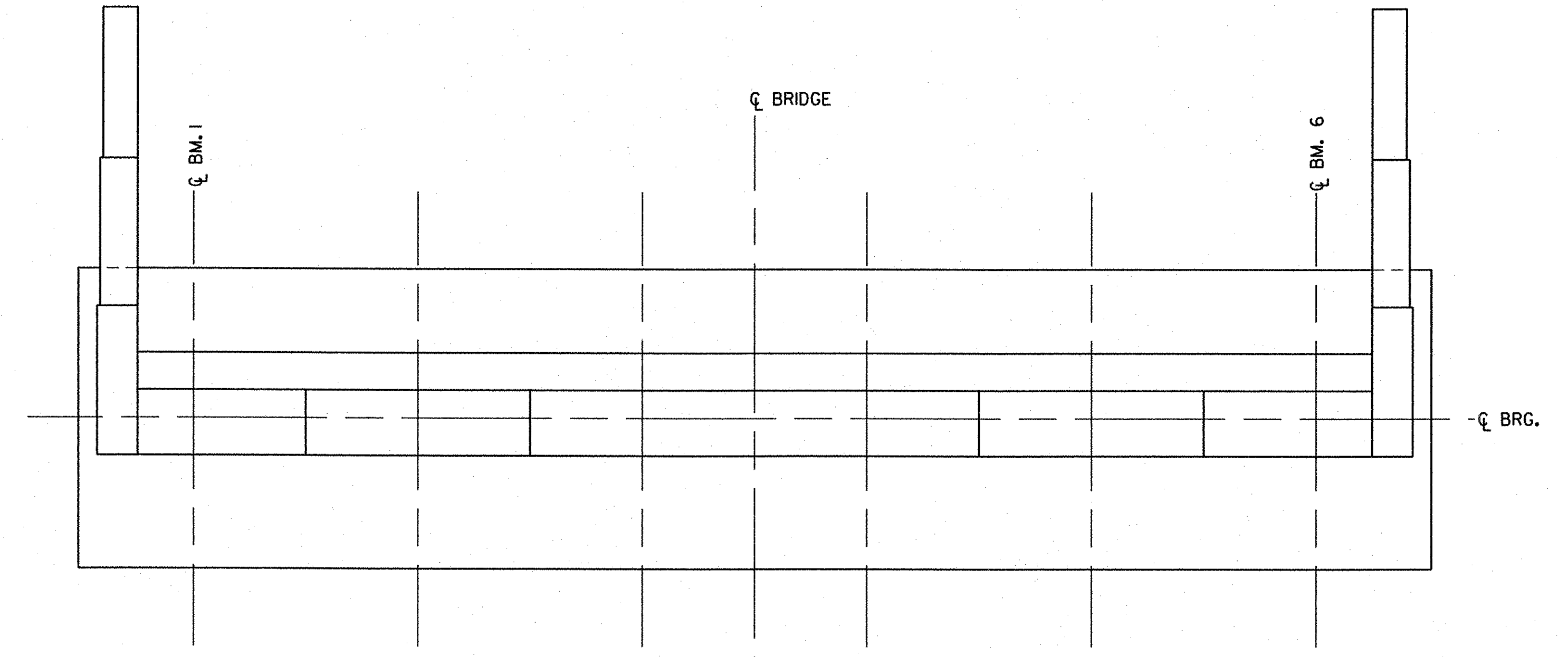
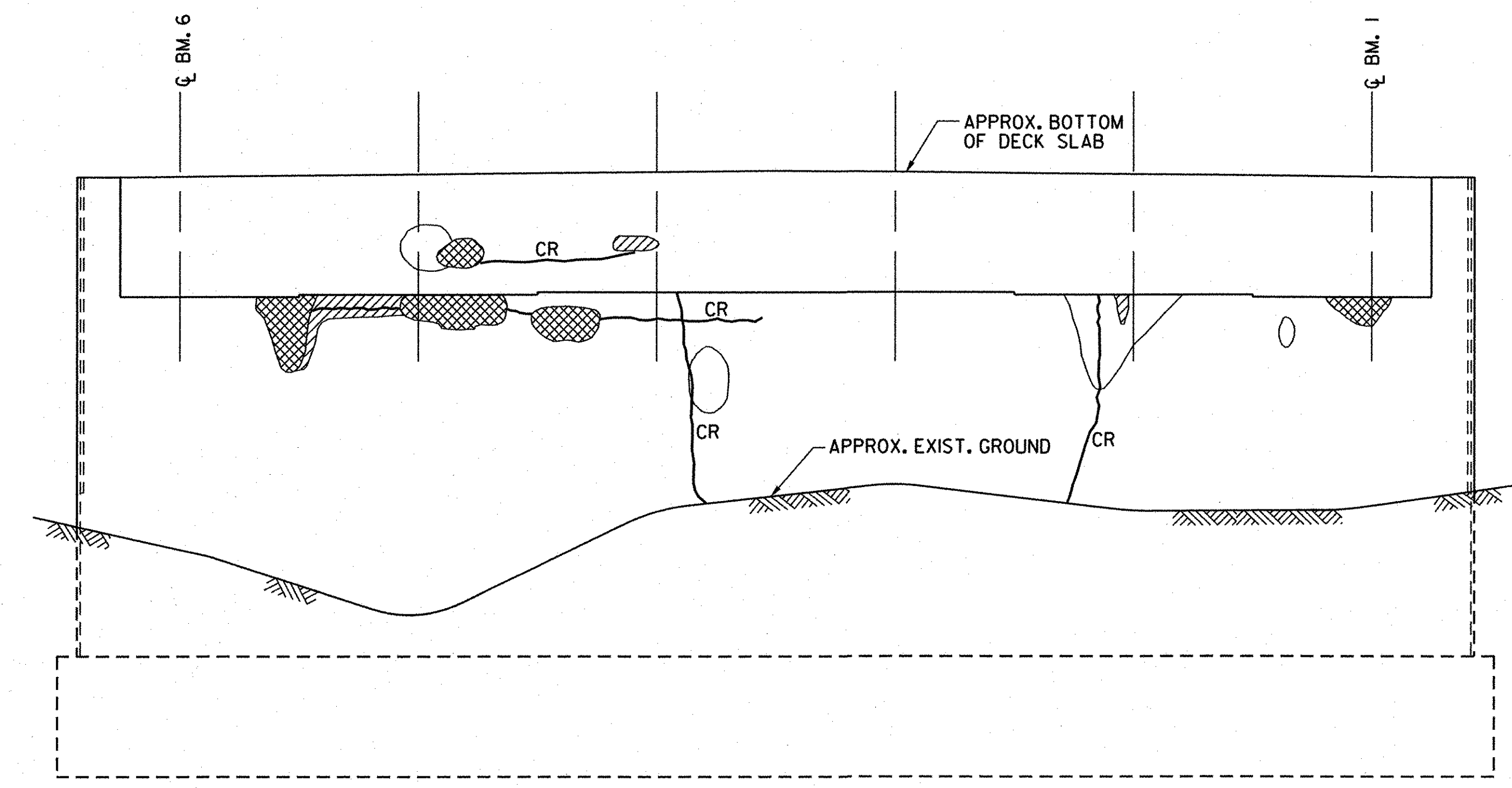


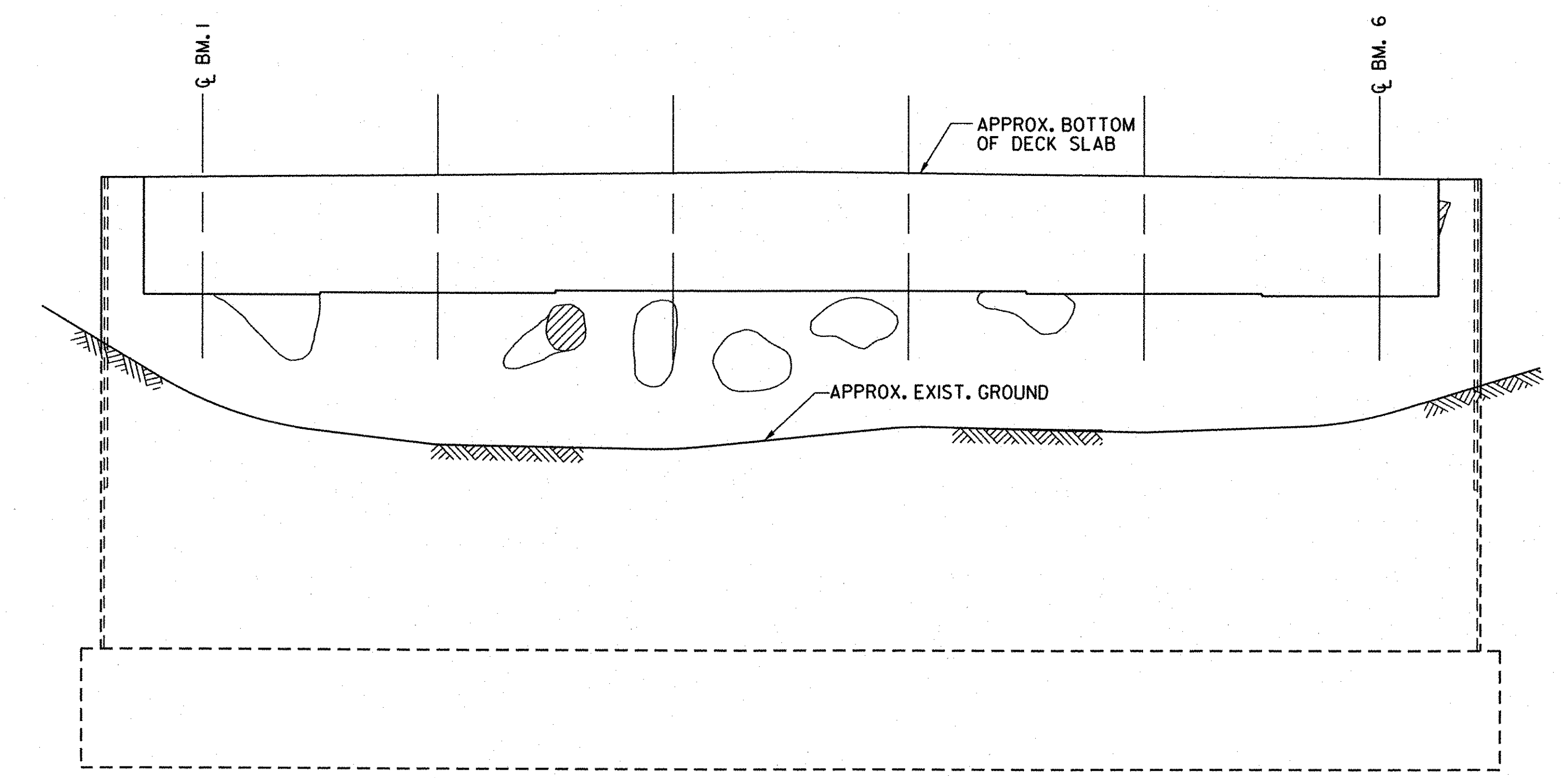
**ABUTMENT 1 PLAN (3S)**  
SCALE: 3/8"=1'-0"



**ABUTMENT 2 PLAN (3S)**  
SCALE: 3/8"=1'-0"



**ABUTMENT 1 ELEVATION (3S)**  
SCALE: 3/8"=1'-0"



**ABUTMENT 2 ELEVATION (3S)**  
SCALE: 3/8"=1'-0"

- ABBREVIATIONS**
- CR CRACK
  - PA PREVIOUSLY PATCHED AREA
- LEGEND**
- CRACK
  - DELAMINATED AREA
  - SPALLED AREA
  - DEEPLY SPALLED WITH EXPOSED REBAR
  - UNDERGROUND TELEPHONE
  - EXISTING GROUND

<b>STATE OF VERMONT AGENCY OF TRANSPORTATION</b>			
Town Of	GUILFORD	Bridge No.	<b>3S</b>
Highway No.	I-91	Log Sta.	
		Surv. Sta.	
<b>1-91 SB OVER BROAD BROOK &amp; BROAD BROOK ROAD</b>			
<b>EXIST. SUBSTRUCTURE CONDITION (3S) (3 OF 3)</b>			
Designed By	M.J. MOZER	Drawn By	G.K. MORZE
Checked By	Date	Bridge Design Supervisor	Date
P.W. SZUSTAK	01/03	J.P. HALSTEAD	01/03
PROJECT	GUILFORD	PROJECT NO.	IM 091-(133)
TVGA ENGINEERING, SURVEYING, P.C.	TVGA CAD Drawing No. G EXIS SB ABI2.dgn	Date	04/28/08
Bridge Sheet No. BR163	Sheet 89		of 114