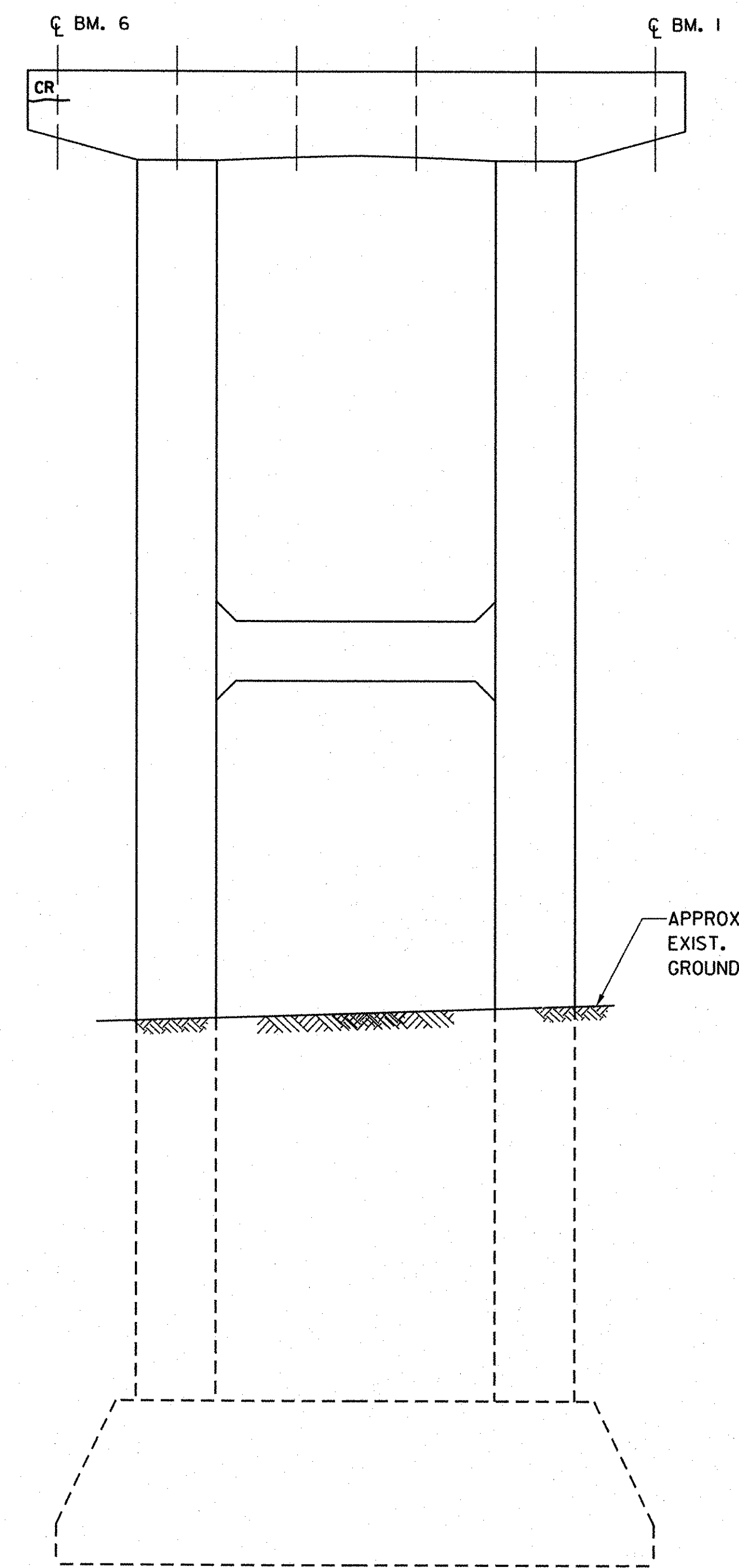
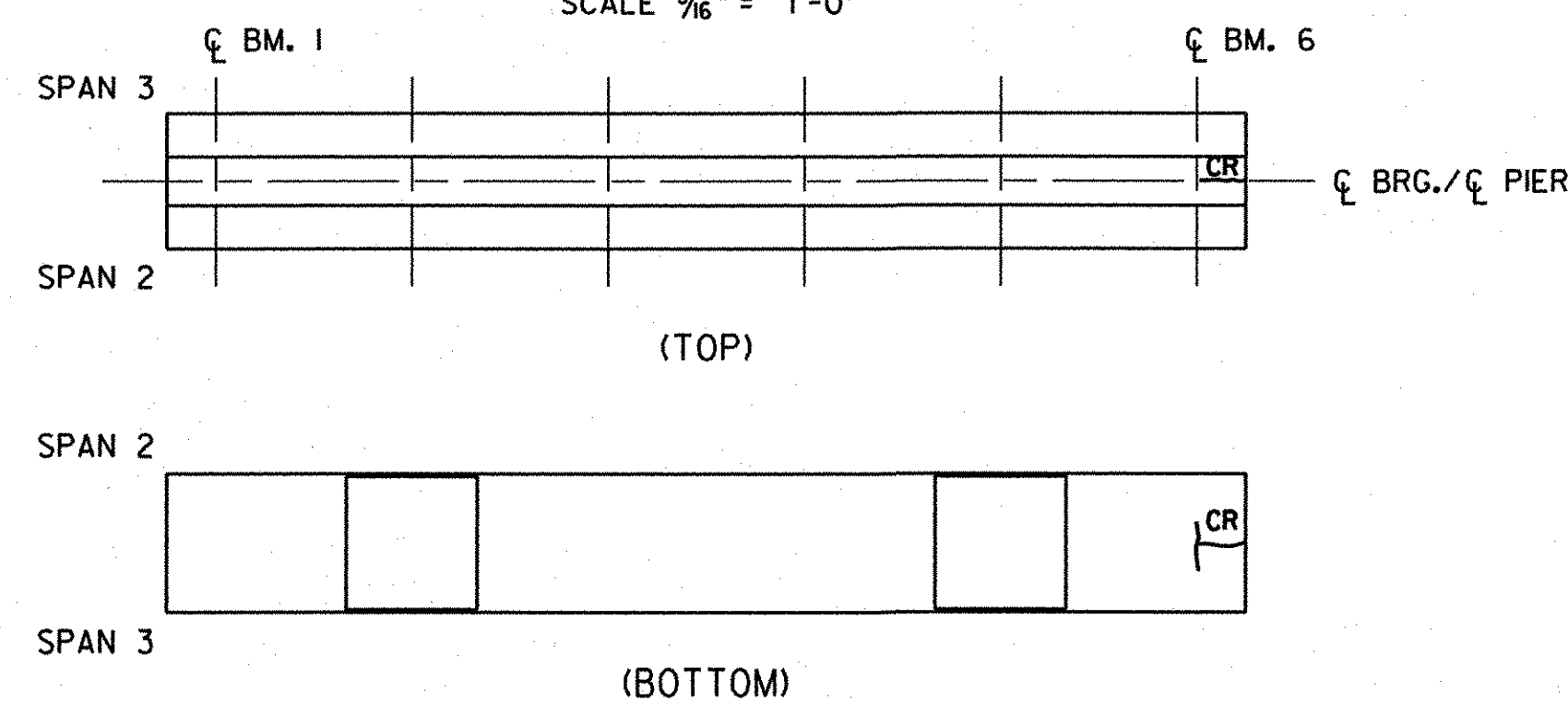


PIER 2 ELEVATION (3S)
(PIER 1 SIDE)
SCALE 3/16" = 1'-0"



PIER 2 ELEVATION (3S)
(ABUT. 2 SIDE)
SCALE 3/16" = 1'-0"



PIER 2 CAP
SCALE 3/16" = 1'-0"

ABBREVIATIONS
CR CRACK
PA PREVIOUSLY PATCHED AREA

LEGEND
CRACK
DELAMINATED AREA
SPALLED AREA
DEEPLY SPALLED WITH EXPOSED REBAR
UNDERGROUND TELEPHONE
EXISTING GROUND

**STATE OF VERMONT
AGENCY OF TRANSPORTATION**

Town Of	GUILFORD	Bridge No.	3S
Highway No.	I-91	Log Sta.	
		Surv. Sta.	
I-91SB OVER BROAD BROOK & BROAD BROOK ROAD			
EXIST. SUBSTRUCTURE CONDITION (3S) (2 OF 3)			
Designed By	M.J. MOZER	Drawn By	G.K. MORZE
Checked By	Date	Bridge Design Supervisor	
P.W. SZUSTAK	01/03	J.P. HALSTEAD	Date 01/03
PROJECT	GUILFORD	PROJECT NO.	IM 091-(33)
TVGA CAD Drawing No.	G EXIS SB PR2.dgn	Date	04/28/08
Bridge Sheet No.	BR162	Sheet	88 of 114