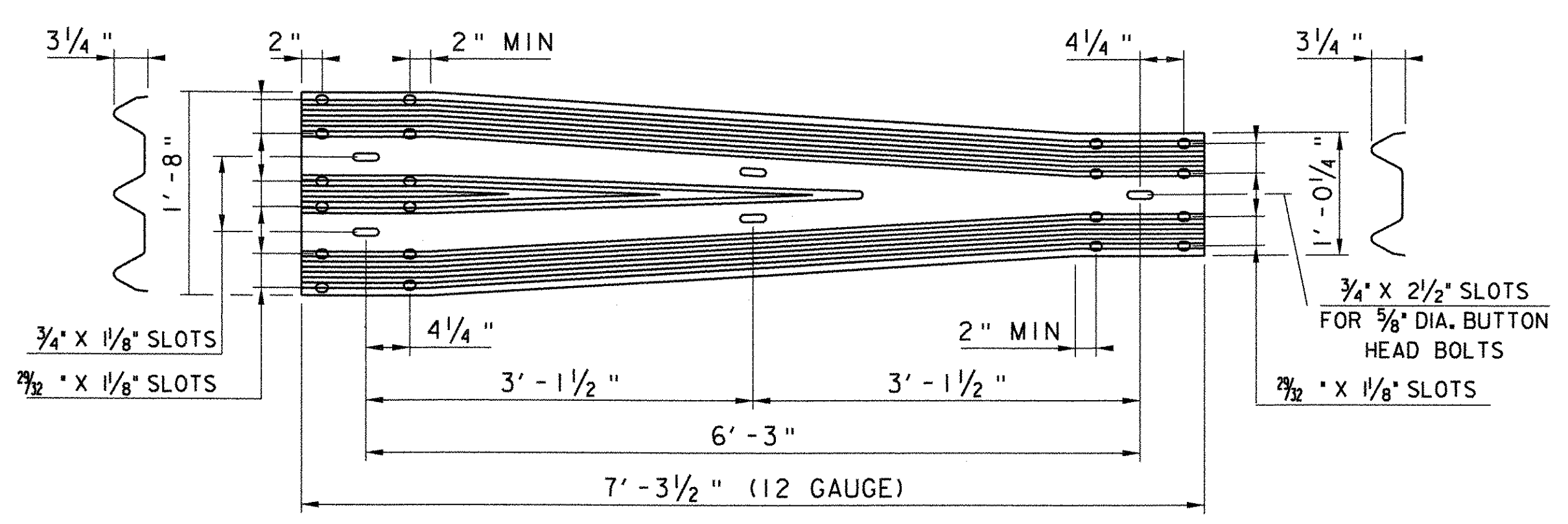
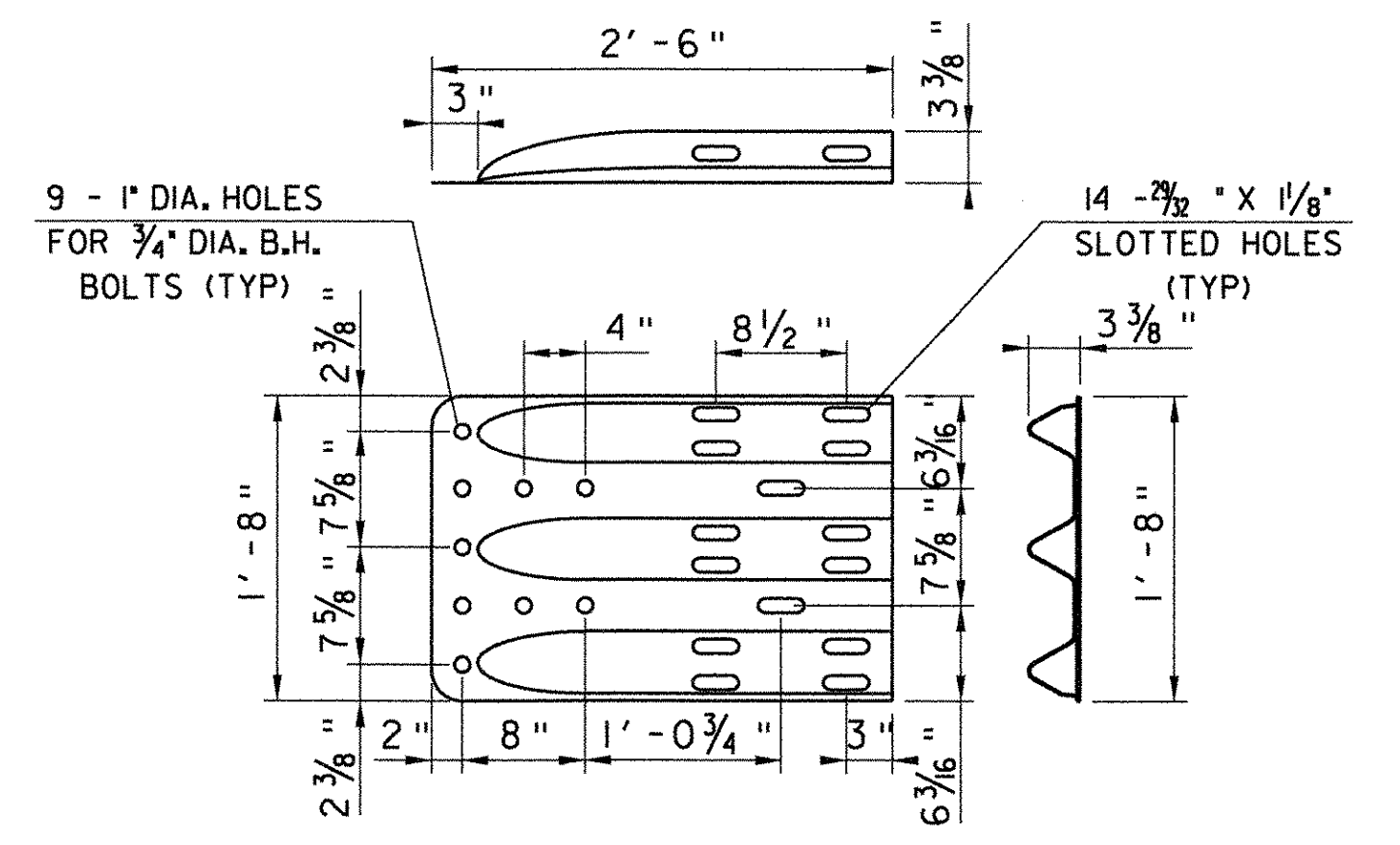


**RAIL PAY ITEMS**  
NTS

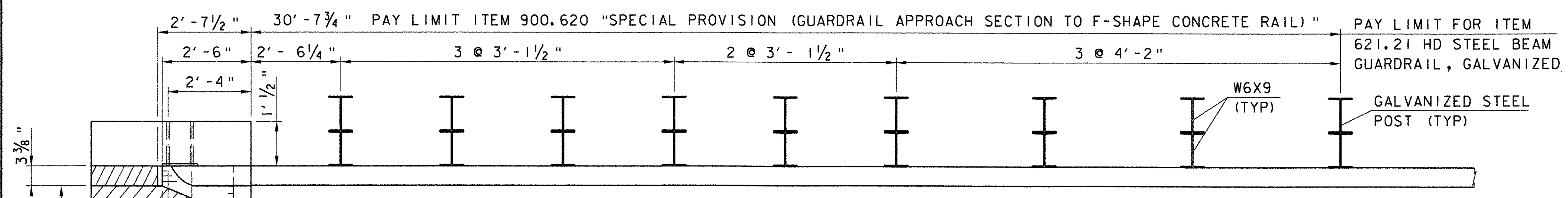
- \*\*\*\*\* — SEE APPROACH SECTION BELOW
- ⊙⊙⊙ — MANUFACTURED TERMINAL SECTION, FLARED
- ▢▢▢ — HD STEEL BEAM GUARD RAIL, GALVANIZED, TRAILING END TERMINAL. SEE STANDARD G-1d
- ▲▲▲ — HD STEEL BEAM GUARD RAIL, GALVANIZED, SEE STANDARD G-1



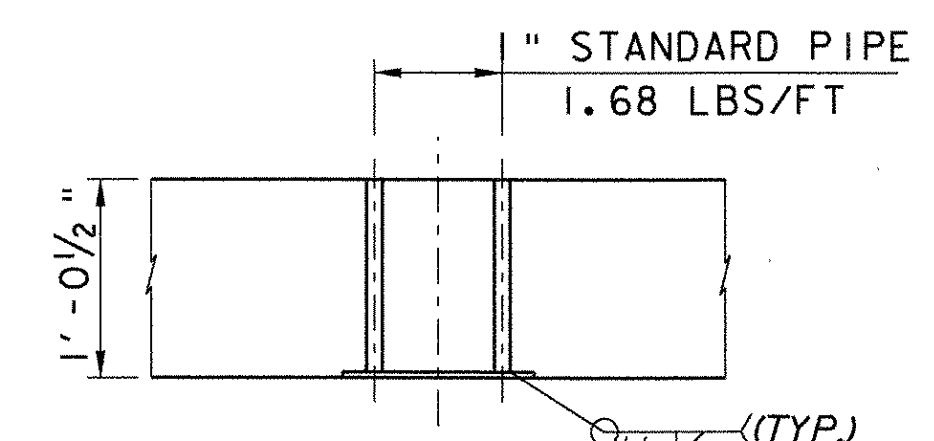
**THRIE-BEAM TO HDSB TRANSITION SECTION**  
SCALE 1" = 1'-0"



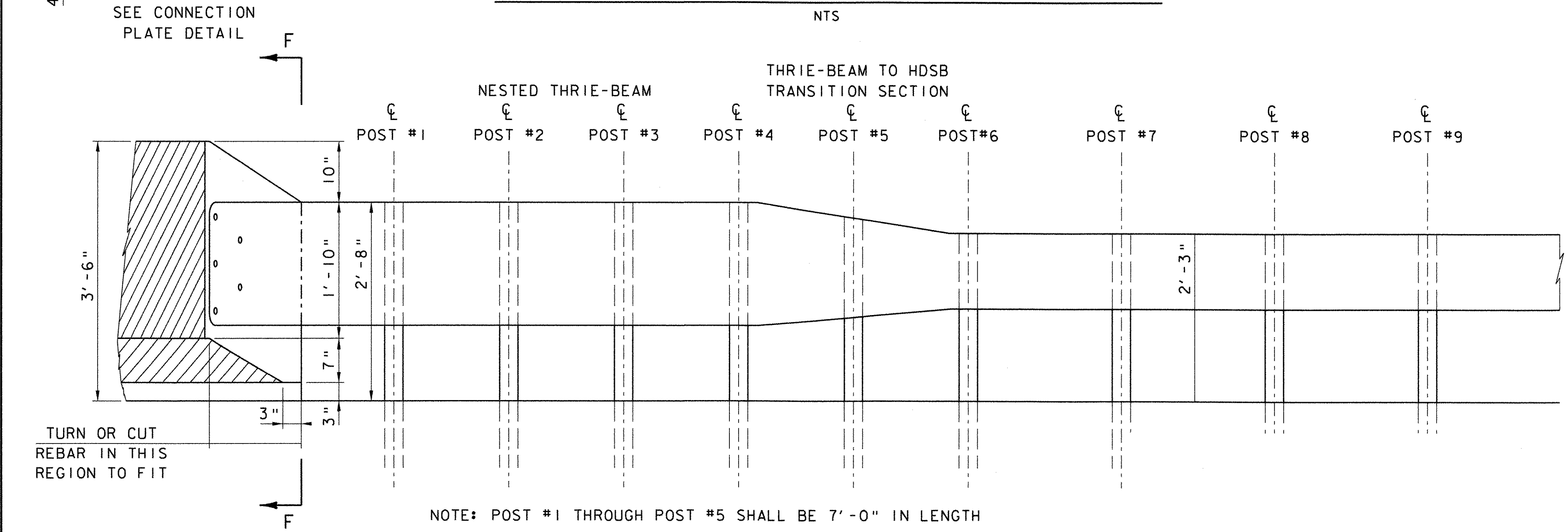
**THRIE-BEAM TERMINAL CONNECTOR BOLT TO CONCRETE BARRIER & THRIE-BEAM**  
SCALE 1" = 1'-0"



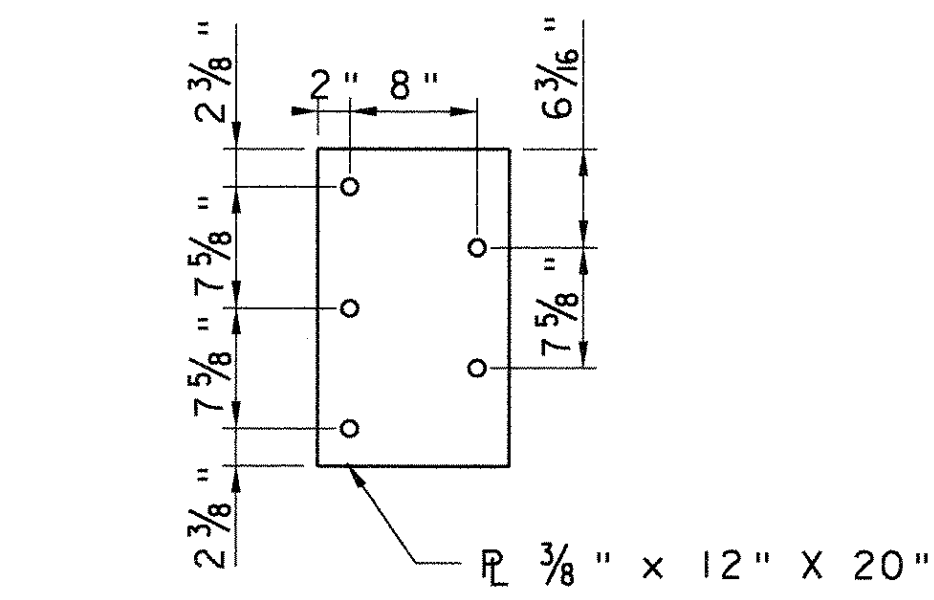
**PLAN VIEW GUARDRAIL APPROACH SECTION TO F-SHAPE CONCRETE RAIL**  
NTS



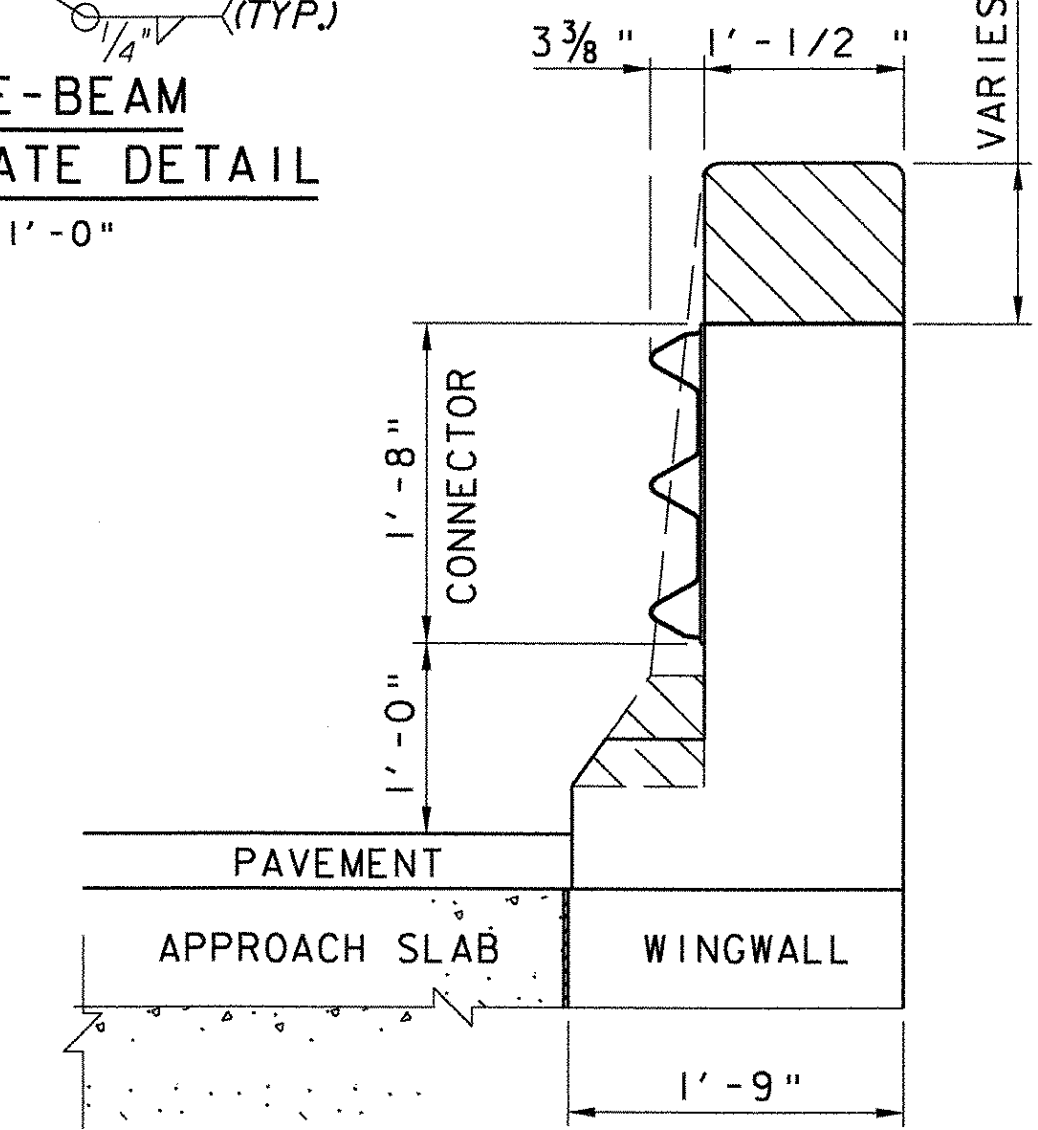
**PLAN THRIE-BEAM CONNECTION PLATE DETAIL**  
SCALE 1" = 1'-0"



**ELEVATION VIEW GUARDRAIL APPROACH SECTION TO F-SHAPE CONCRETE RAIL**  
NTS

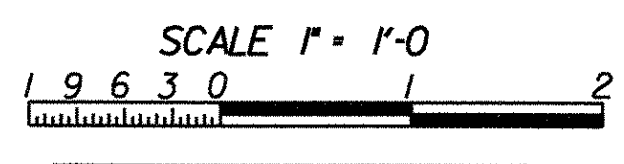


**ELEVATION THRIE-BEAM CONNECTION PLATE DETAIL**  
SCALE 1" = 1'-0"



**SECTION F-F**  
SCALE 1" = 1'-0"

NOTE: THRIE-BEAM TERMINAL CONNECTOR SHALL BE INCIDENTAL TO ITEM 900.620, SPECIAL PROVISION (GUARDRAIL APPROACH SECTION TO F-SHAPE). THRIE-BEAM CONNECTION PLATE AND ALL HARDWARE REQUIRED SHALL BE INCIDENTAL TO ITEM 900.608 "BRIDGE RAILING, F-SHAPE CONCRETE".



**TVE** TVGA ENGINEERING, SURVEYING, P.C.

<b>STATE OF VERMONT AGENCY OF TRANSPORTATION</b>	
Town Of GUILFORD	Bridge No. <b>3N&amp;S</b>
Highway No. I-91	Log Sta. Surv. Sta.
I-91 OVER BROAD BROOK & BROAD BROOK ROAD	
<b>APPROACH GUARD RAIL (3N&amp;S)</b>	
Designed By M.J. MOZER	Drawn By L.R. DELL
Checked By Date P.W. SZUSTAK 01/03	Bridge Design Supervisor Date J.P. HALSTEAD 01/03
PROJECT GUILFORD	PROJECT NO. IM 091-(133)
TVGA CAD Drawing No. RAILDETAIL.dgn	Date 04/28/08
Bridge Sheet No. BR150	Sheet 76 of 114