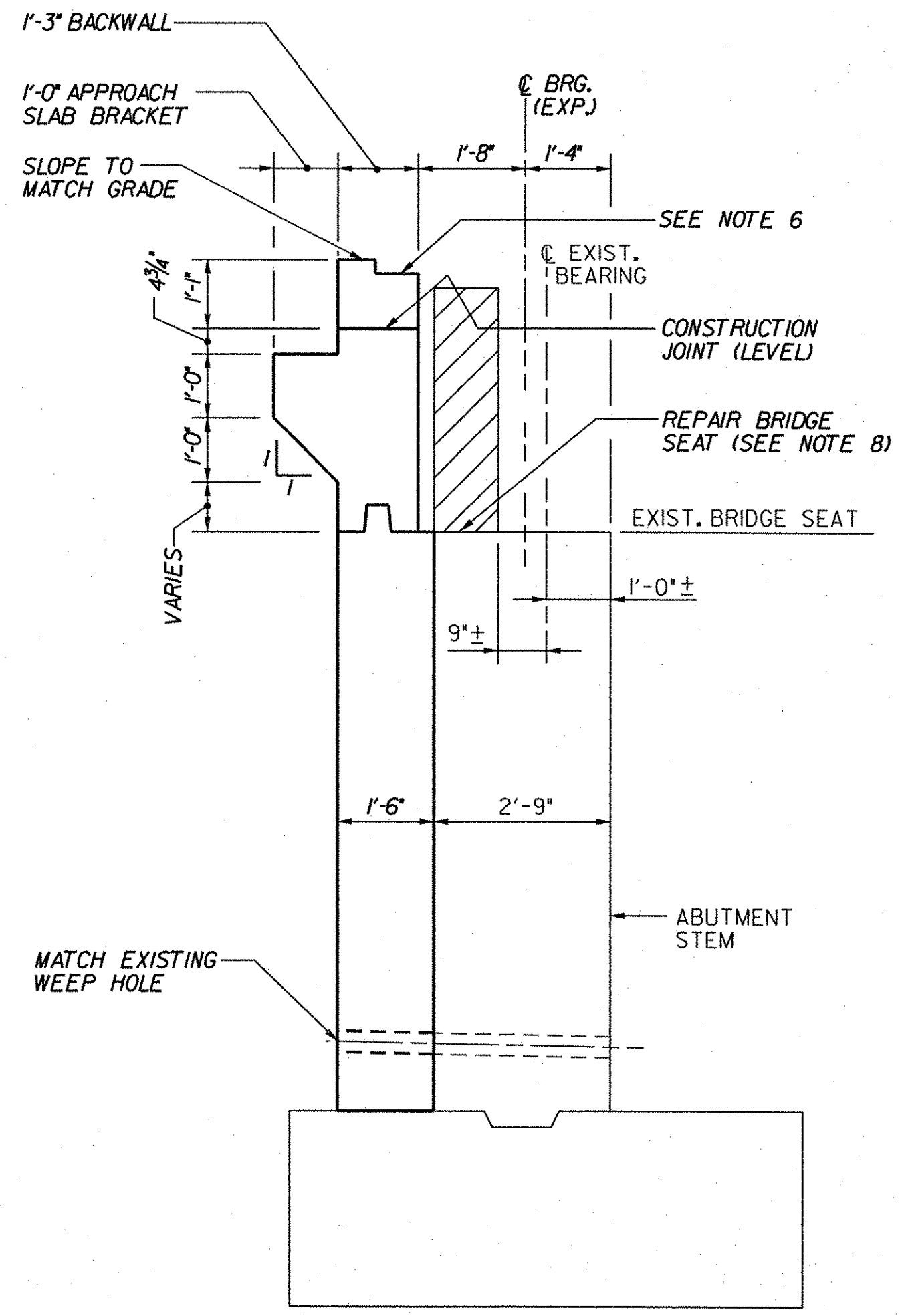
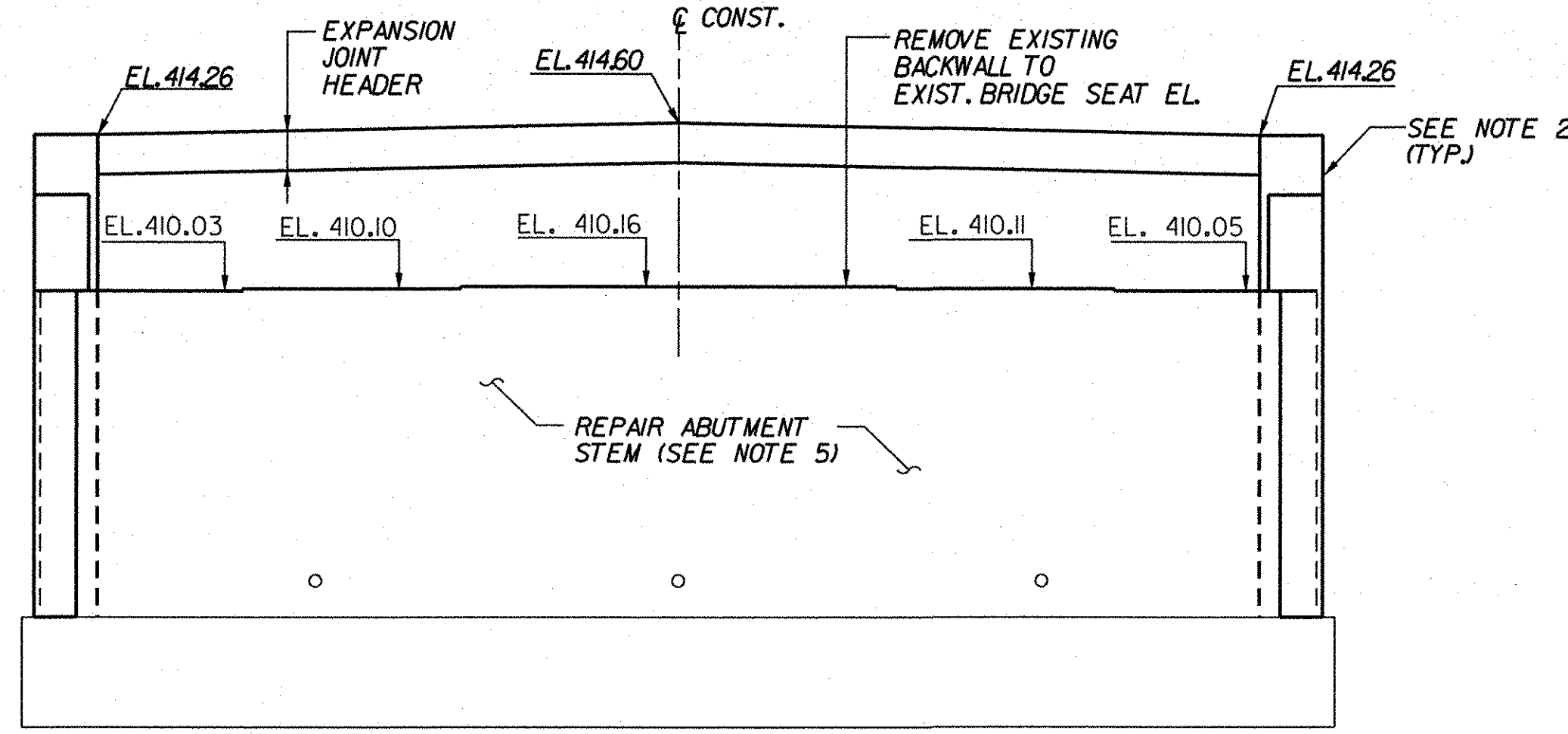


**ABUTMENT 1 PLAN (EXP.) (3S)**  
SCALE: 1/4" = 1'-0"



**SECTION A-A**  
SCALE: 1/2" = 1'-0"

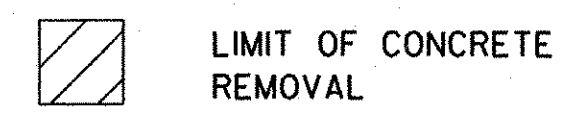


**ABUTMENT 1 ELEVATION (3S)**  
(REMOVAL LIMITS NOT SHOWN FOR CLARITY)  
SCALE: 1/4" = 1'-0"

**NOTES:**

1. EXISTING I2BP53 PILES NOT SHOWN FOR CLARITY.
2. FOR WINGWALL AND CHEEKWALL DIMENSIONS, DETAILS AND ELEVATIONS, SEE WINGWALL MASONRY & REINFORCEMENT (3S) BRIDGE SHEET BR147.
3. BACKWALL ELEVATIONS SHOWN AT FRONT FACE OF BACKWALL.
4. FOR ABUTMENT REINFORCEMENT DETAILS, SEE ABUTMENT I REINFORCEMENT (3S) BRIDGE SHEET BR143.
5. REPAIR ALL EXISTING SPALLED AND DELAMINATED AREAS ON ABUTMENT. SEE EXISTING SUBSTRUCTURE CONDITION (3S), BRIDGE SHEET BR163, FOR APPROXIMATE CONDITION OF EXISTING SUBSTRUCTURE. FOR CONCRETE REPAIR DETAILS, SEE SUBSTRUCTURE REPAIR DETAILS (3N&S), BRIDGE SHEET BR151.
6. FOR DETAILS OF EXPANSION JOINT HARDWARE, SEE FINGER JOINT DETAILS (3N&S), BRIDGE SHEET BR127.
7. BRIDGE SEAT SHALL BE SLOPED 1/2" PER FOOT EXCEPT UNDER BEARING PLATES WHERE THE SURFACE SHALL BE LEVEL.
8. FOLLOWING REMOVAL OF EXISTING BACKWALL, THE CONTRACTOR SHALL GRIND AND/OR REPAIR THE CONCRETE, AS DIRECTED BY THE ENGINEER, TO PROVIDE A SMOOTH LEVEL SURFACE AT PROPOSED SEAT ELEVATION. ANY REPAIRS REQUIRED SHALL BE PERFORMED IN ACCORDANCE WITH SUBSTRUCTURE REPAIR DETAILS (3N&S), BRIDGE SHEET BR151. ALL COSTS FOR THIS WORK SHALL BE INCIDENTAL TO ITEM 529.20, PARTIAL REMOVAL OF STRUCTURE (DECK & SUBSTRUCTURE).

**LEGEND:**



**STATE OF VERMONT  
AGENCY OF TRANSPORTATION**

Town Of	GUILFORD	Bridge No.	<b>3S</b>
Highway No.	I-91	Log Sta.	
		Surv. Sta.	
I-91 SB OVER BROAD BROOK & BROAD BROOK ROAD			
<b>ABUTMENT 1 MASONRY (3S)</b>			
Designed By	M.J. MOZER	Drawn By	G.K. MORZE
Checked By	Date	Bridge Design Supervisor	
P.W. SZUSTAK	01/03	J.P. HALSTEAD	Date 01/03
PROJECT	GUILFORD	PROJECT NO.	IM 091-1(33)
TVGA ENGINEERING, SURVEYING, P.C.		TVGA CAD Drawing No. G SB ABUT1.dgn	Date 05/12/08
Bridge Sheet No. BR142		Sheet 68 of 114	