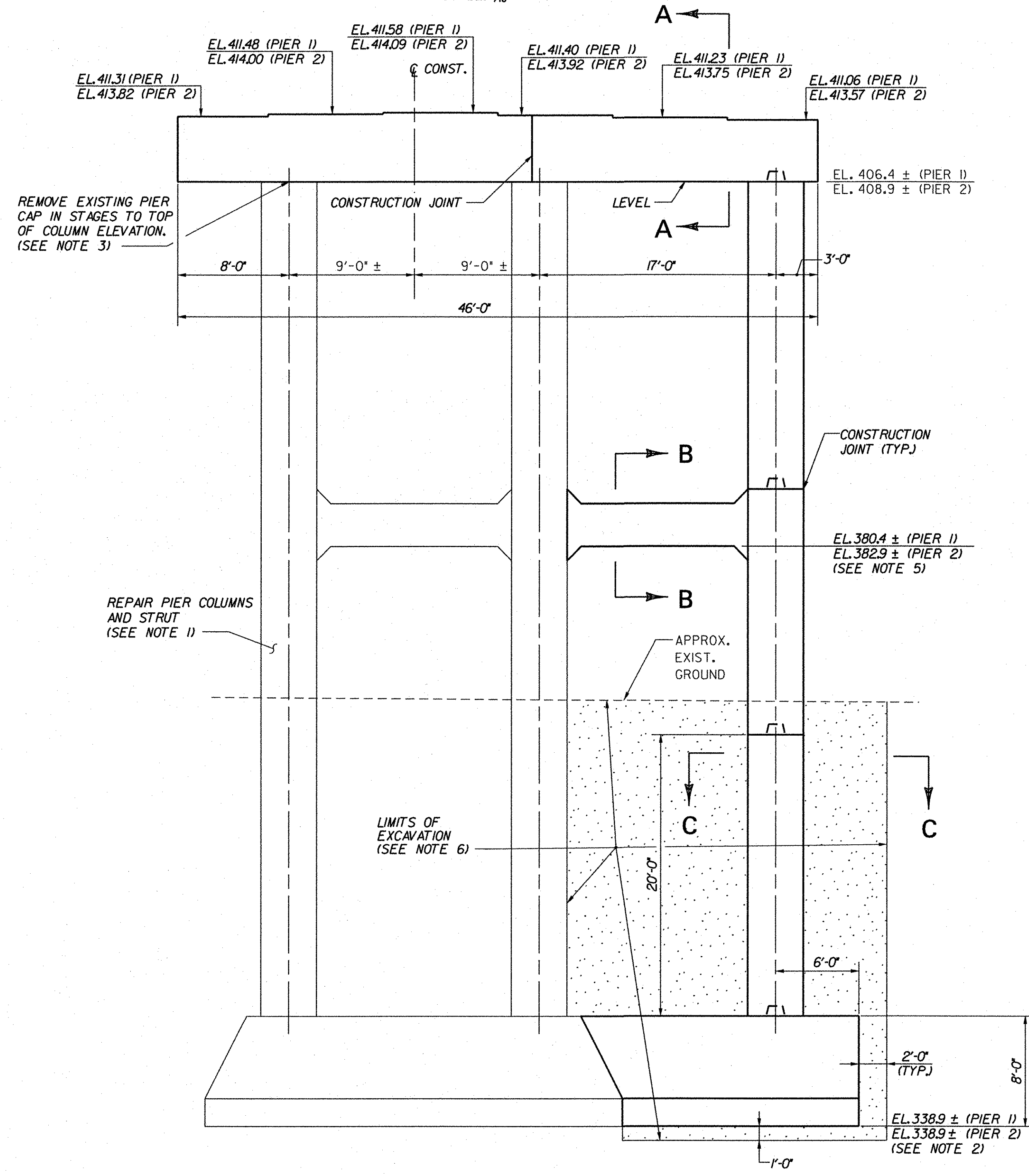
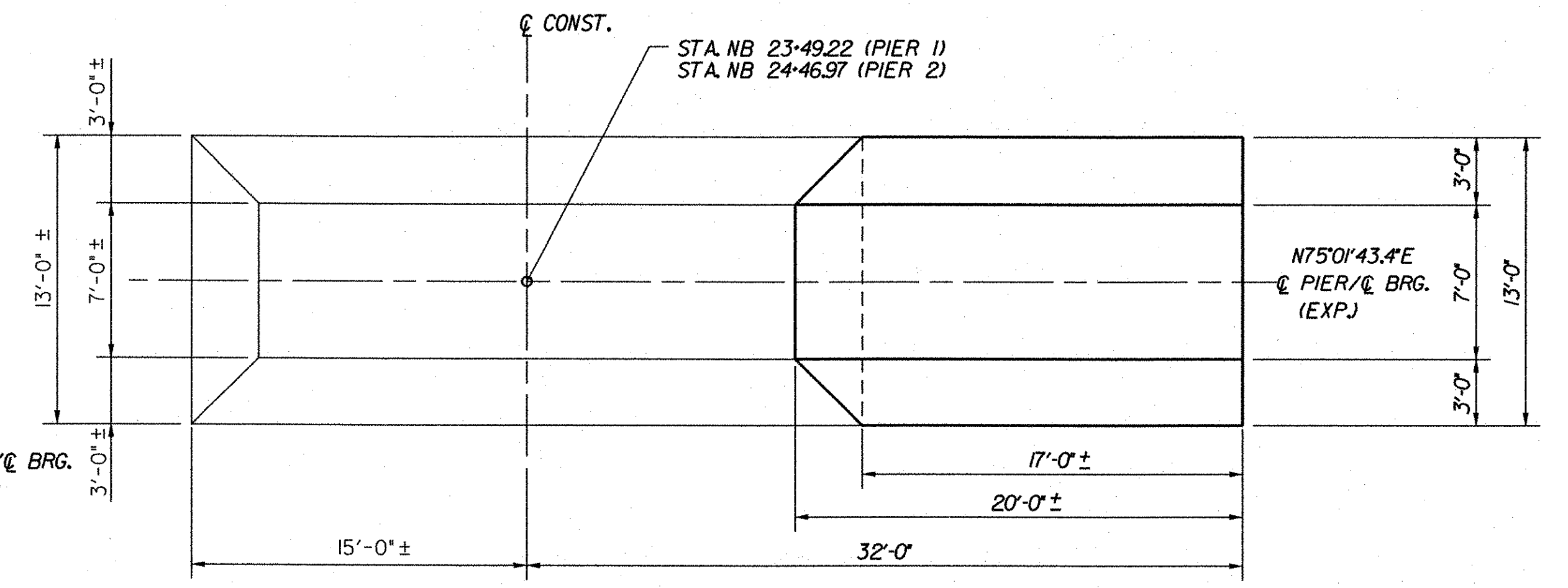
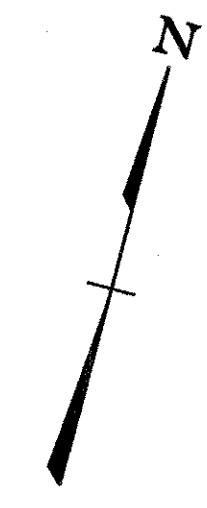


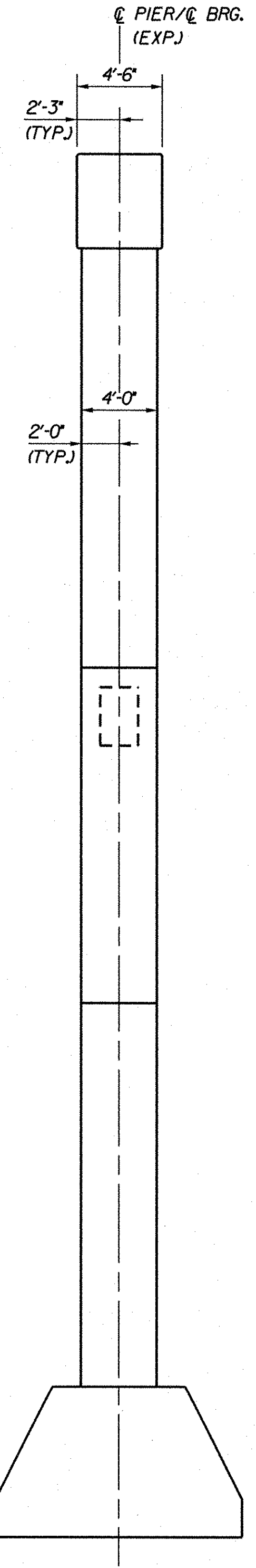
**PLAN (3N)**  
SCALE: 3/16" = 1'-0"



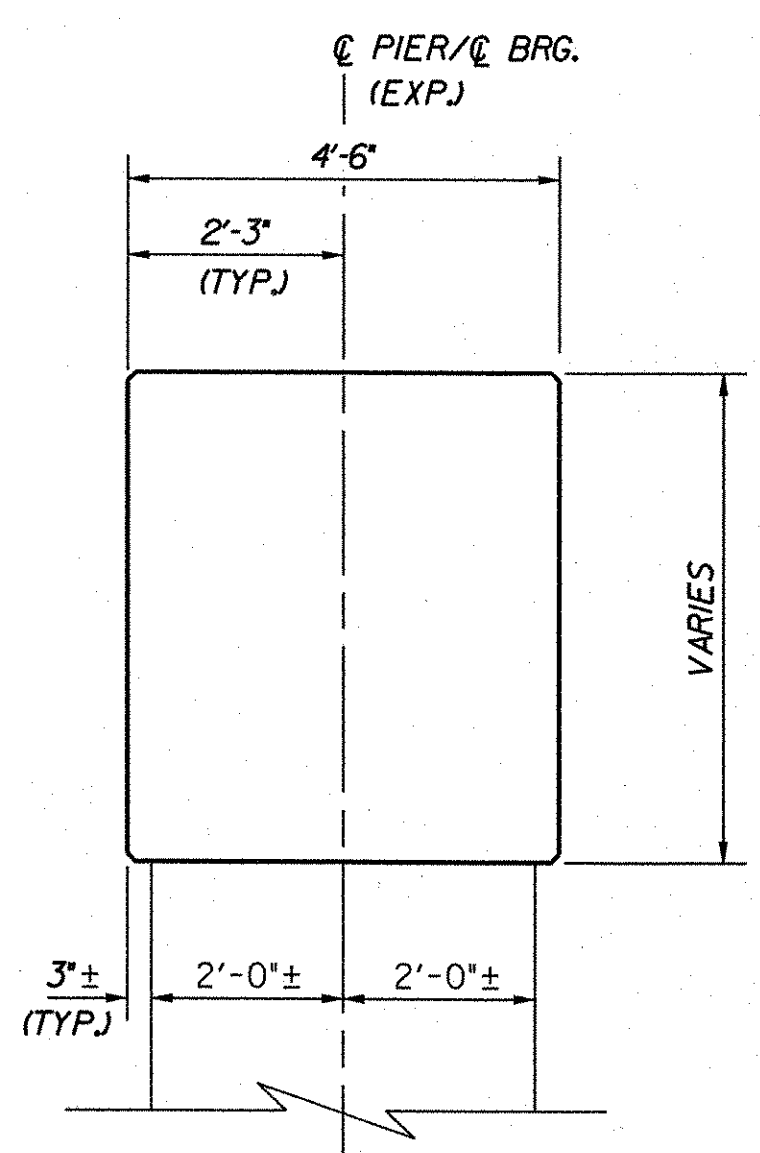
**PIER ELEVATION (3N)**  
SCALE: 3/16" = 1'-0"



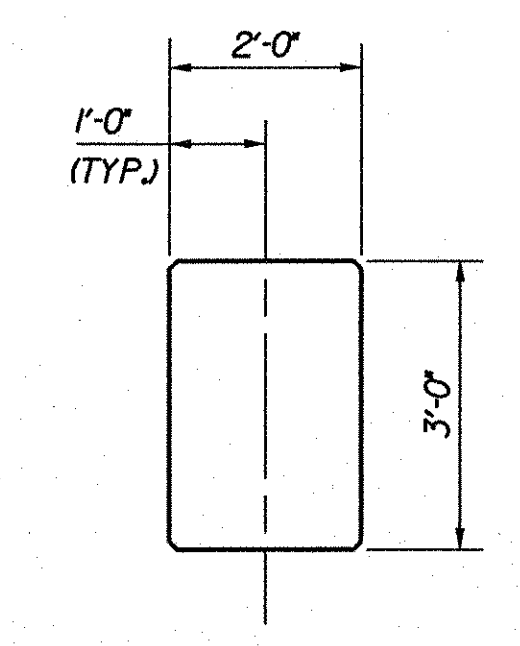
**FOOTING PLAN (3N)**  
SCALE: 3/16" = 1'-0"



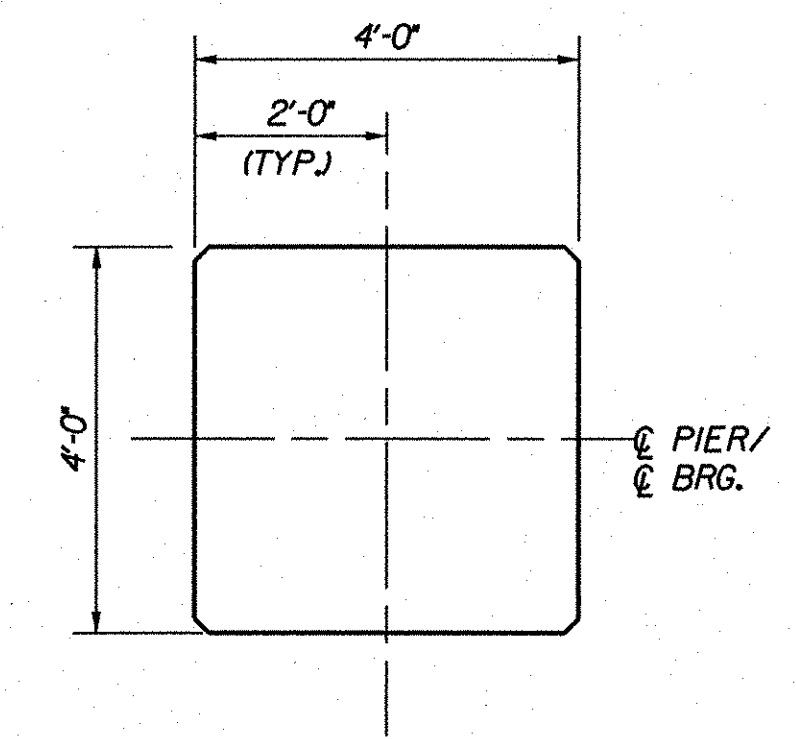
**END ELEVATION (3N)**  
SCALE: 3/16" = 1'-0"



**SECTION A-A**  
SCALE: 1/2" = 1'-0"



**SECTION B-B**  
SCALE: 1/2" = 1'-0"



**SECTION C-C**  
SCALE: 1/2" = 1'-0"

**NOTES:**

- REPAIR ALL EXISTING SPALLED AND DELAMINATED AREAS ON PIERS. SEE EXISTING SUBSTRUCTURE CONDITION (3N), BRIDGE SHEETS BR158 AND BR159, FOR APPROXIMATE CONDITION OF EXISTING SUBSTRUCTURE. FOR CONCRETE REPAIR DETAILS, SEE SUBSTRUCTURE REPAIR DETAILS (3N&S), BRIDGE SHEET BR151.
- THE NEW BOTTOM OF FOOTING ELEVATION SHOWN IS APPROXIMATE. NEW FOOTINGS SHALL BE CONSTRUCTED AT THE SAME ELEVATION AS THE EXISTING FOOTING. THE CONTRACTOR SHALL VERIFY THE EXISTING FOOTING LOCATION PRIOR TO ORDERING REINFORCING STEEL.
- SEE PIER STAGING DETAILS (3N), BRIDGE SHEET BR141.
- STEPS ON PIER CAP SEAT SHALL BE EQUIDISTANT BETWEEN GIRDERS.
- THE NEW BOTTOM OF STRUT ELEVATION IS APPROXIMATE. NEW STRUT SHALL BE CONSTRUCTED AT THE SAME ELEVATION AS THE EXISTING STRUT. THE CONTRACTOR SHALL VERIFY THE EXISTING STRUT LOCATION PRIOR TO ORDERING REINFORCING STEEL.
- FOR EXCAVATION PAY LIMITS AND COFFERDAM NOTES, SEE PRELIMINARY INFORMATION SHEET, BRIDGE SHEET BR100.
- BRIDGE SEATS SHALL BE SLOPED 1/2" PER FOOT EXCEPT UNDER BEARING PLATES WHERE THE SURFACE SHALL BE LEVEL.

**STATE OF VERMONT  
AGENCY OF TRANSPORTATION**

Town Of	GUILFORD	Bridge No.	<b>3N</b>
Highway No.	I-91	Log Sta.	
		Surv. Sta.	
I-91NB OVER BROAD BROOK & BROAD BROOK ROAD			
<b>PIER MASONRY (3N)</b>			
Designed By	M.J. MOZER	Drawn By	G.K. MORZE
Checked By	Date	Bridge Design Supervisor	
P.W. SZUSTAK	01/03	J.P. HALSTEAD	Date 01/03
PROJECT	GUILFORD	PROJECT NO.	IM 091-1(33)
TVGA CAD Drawing No. G NB PIER.dgn		Date	05/12/08
Bridge Sheet No.	BR139	Sheet	65 of 114