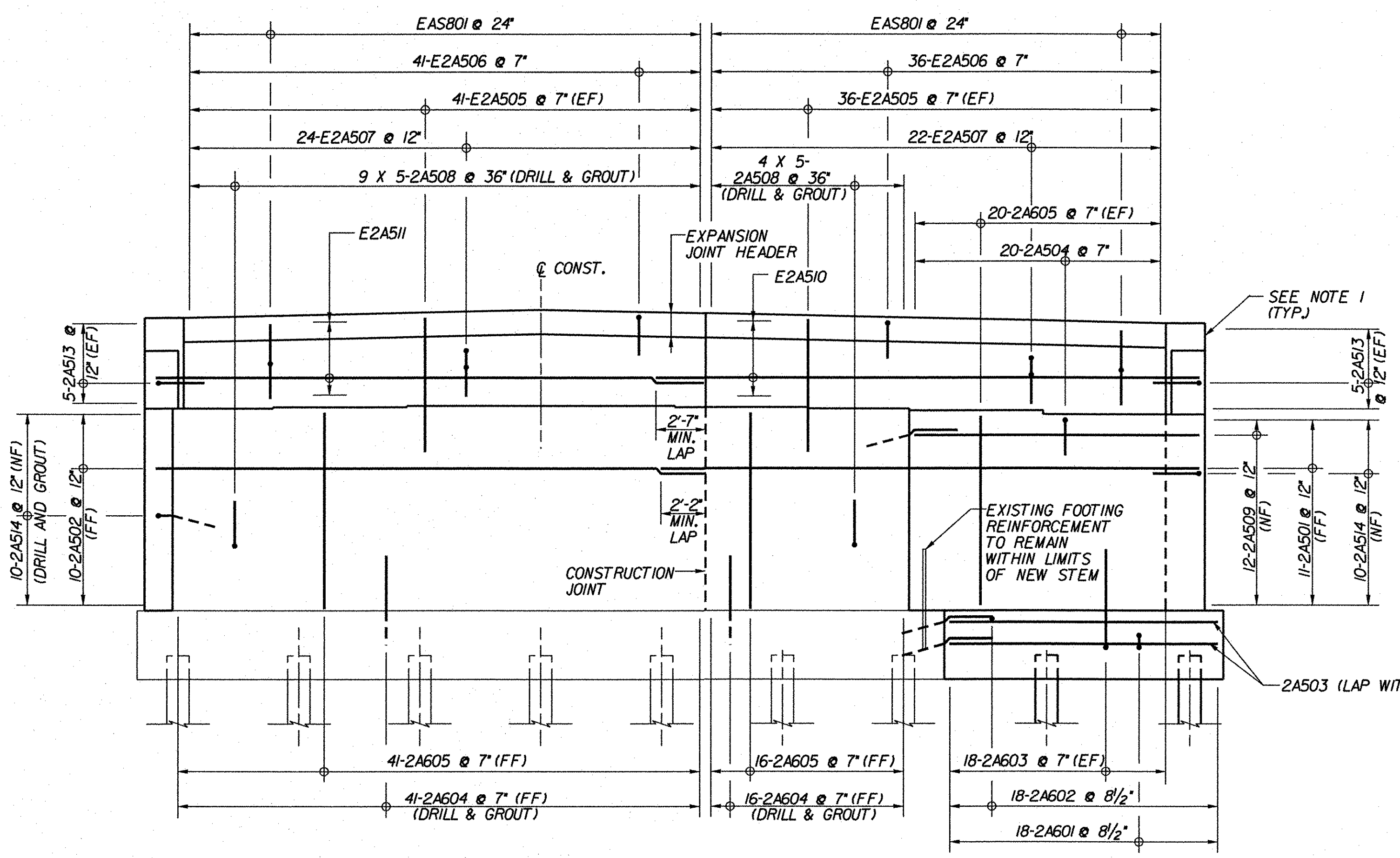


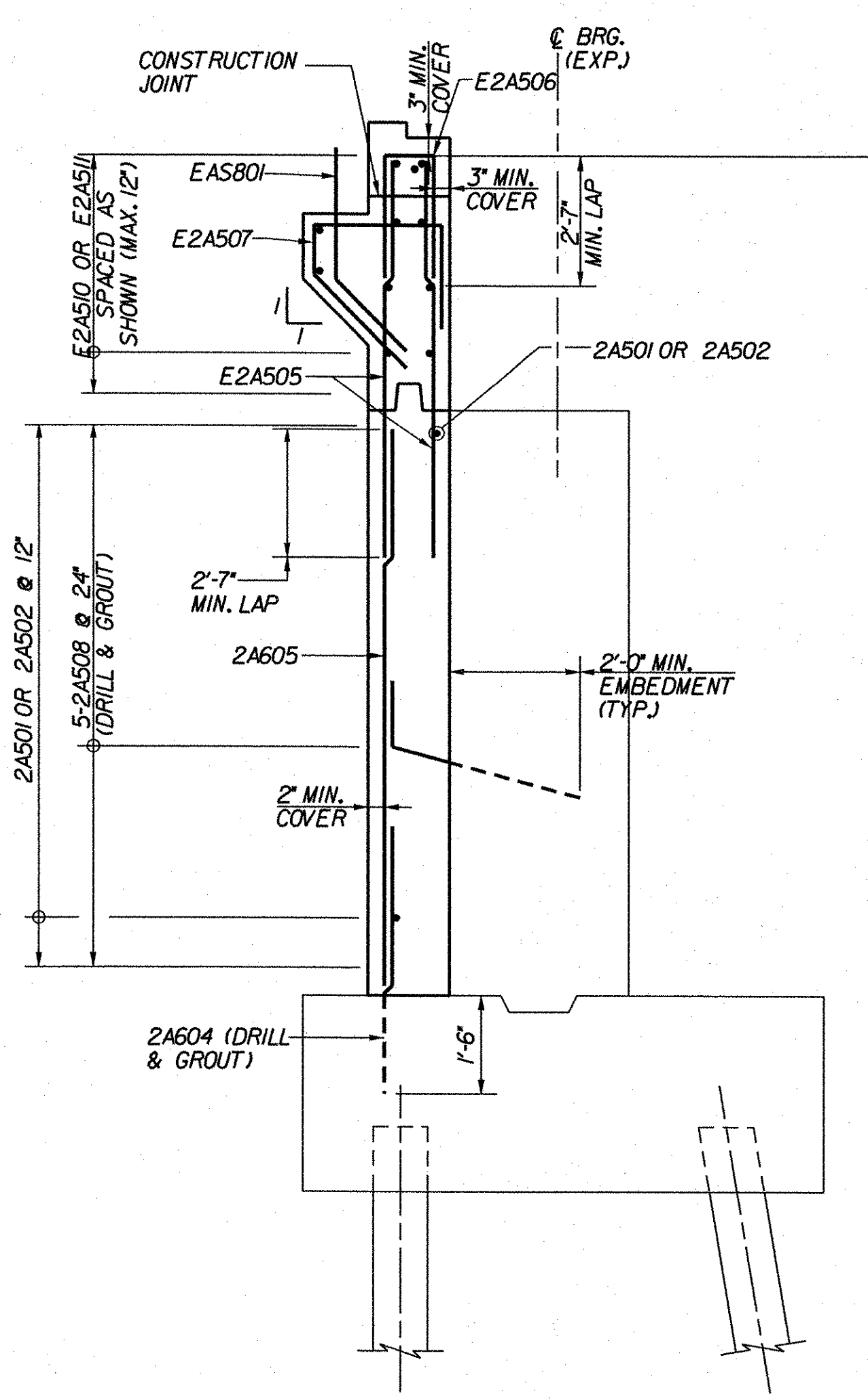
ABUTMENT 2 PLAN (3N)

SCALE: 1/4" = 1'-0"



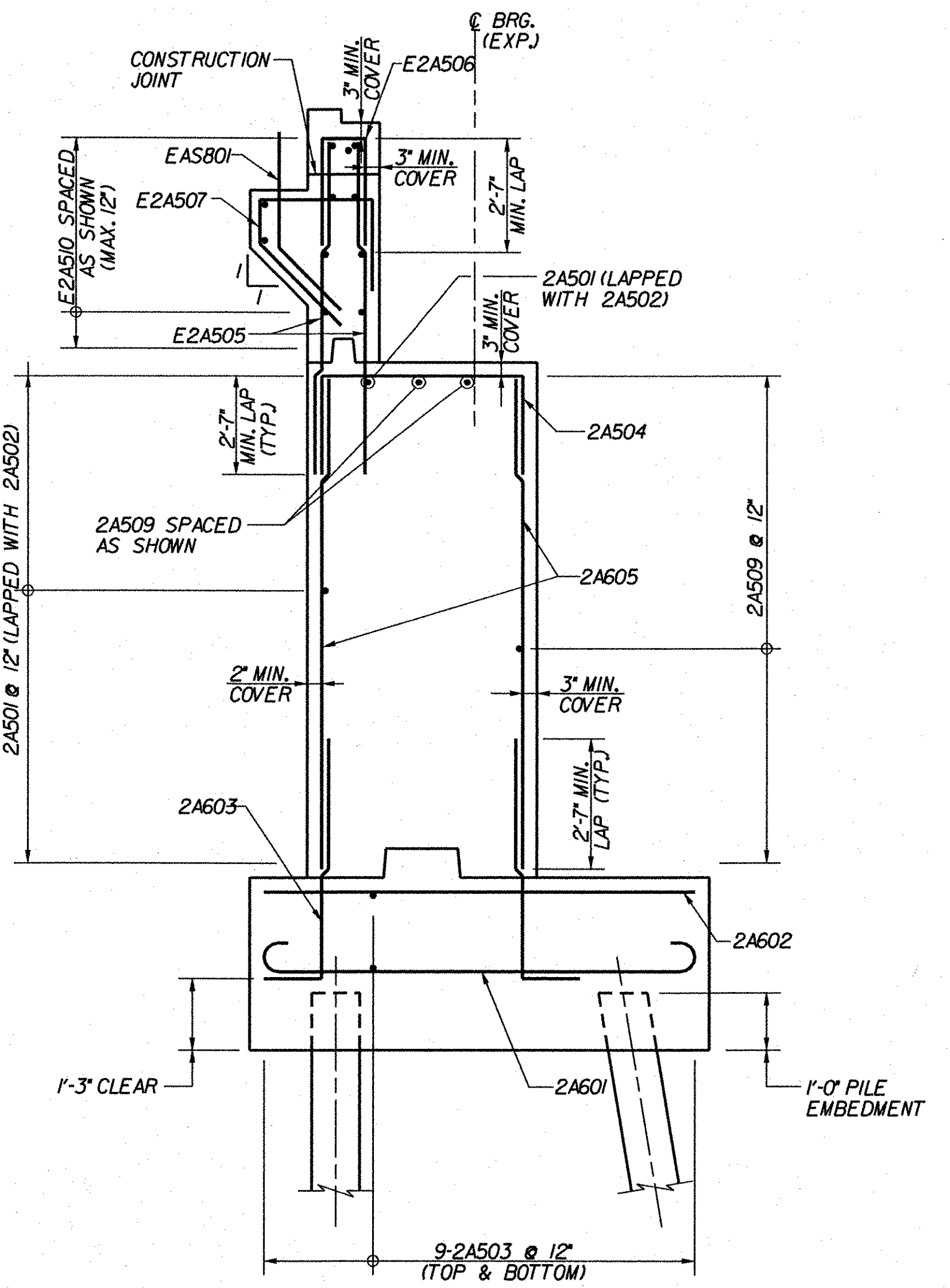
ABUTMENT 2 ELEVATION (3N)

SCALE: 1/4" = 1'-0"



SECTION A-A

SCALE: 1/2" = 1'-0"



SECTION B-B

SCALE: 1/2" = 1'-0"

NOTES:

1. FOR WINGWALL AND CHEEKWALL REINFORCEMENT SEE WINGWALL MASONRY AND REINFORCEMENT (3N), BRIDGE SHEET BR138.
2. DRILL AND GROUT BARS SHALL HAVE A MINIMUM 2'-0" EMBEDMENT UNLESS OTHERWISE NOTED.

KEY

- NF NEAR FACE
- FF FAR FACE
- EF EACH FACE
- ▲ REINFORCEMENT TO BE CUT TO FIT IN THE FIELD

**STATE OF VERMONT
AGENCY OF TRANSPORTATION**

| | | | |
|--|-------------|--------------------------|--------------|
| Town Of | GUILFORD | Bridge No. | 3N |
| Highway No. | I-91 | Log Sta. | |
| | | Surv. Sta. | |
| I-91NB OVER BROAD BROOK & BROAD BROOK ROAD | | | |
| ABUTMENT 2 REINFORCEMENT (3N) | | | |
| Designed By | M. J. MOZER | Drawn By | G.K. MORZE |
| Checked By | Date | Bridge Design Supervisor | |
| P.W. SZUSTAK | 01/03 | J.P. HALSTEAD | Date 01/03 |
| PROJECT | GUILFORD | PROJECT NO. | IM 091-1(33) |
| | | Date | 04/28/08 |
| Bridge Sheet No. | BR137 | Sheet | 63 of 114 |