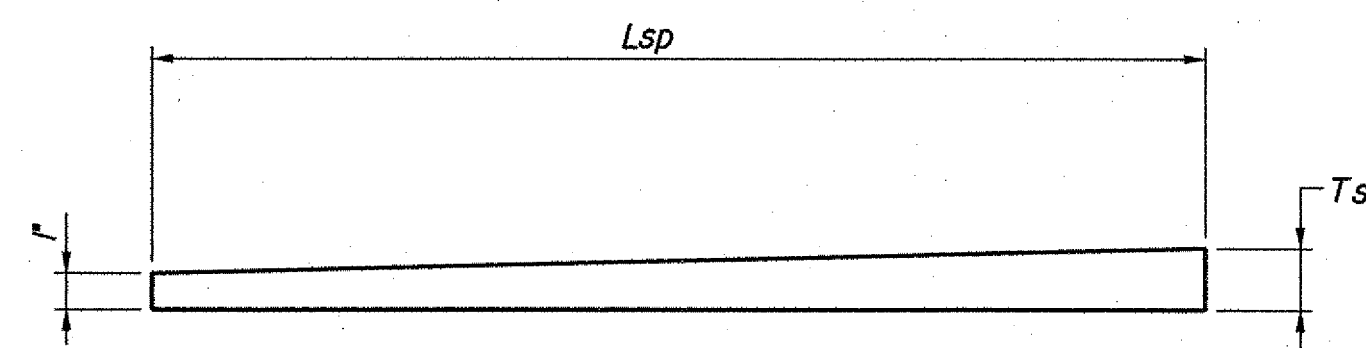


(ANCHOR BOLTS NOT SHOWN FOR CLARITY)
PLAN
 NOT TO SCALE

EXPANSION ABUTMENT BEARING GEOMETRY														
BRIDGE NO.	SUB-STRUCTURE UNIT	BEARING PAD			SOLE PLATE			SHIM PLATE		S.S. PLATE		BEAM FLANGE	BEVELED WASHERS	
		Lp	Wp	Tp	Lsp	Wsp	Tsp	Lsh	Wsh	Lss	Wss	Wf	UPSTATION	DOWNSTATION
3N	ABUT. 2	8"	18"	1 1/2"	14"	28"	1 5/16"	14"	28"	13 1/2"	18 1/2"	16"	3/8"	9/16"
3S	ABUT. 1	8"	18"	1 1/2"	14"	28"	1 7/16"	14"	28"	13 1/2"	18 1/2"	16"	3/8"	5/8"

ABUTMENT "A" ADJUSTMENT TABLE								
BRIDGE NO.	SUB-STRUCTURE UNIT	DISTANCE "A"						
		0°	15°	30°	45°	60°	75°	90°
3N	ABUT. 2	3 7/8"	3 5/8"	3 5/16"	3"	2 11/16"	2 3/8"	2 1/8"
3S	ABUT. 1	3 7/8"	3 5/8"	3 5/16"	3"	2 11/16"	2 3/8"	2 1/8"



SIDE VIEW SOLE PLATE
 NOT TO SCALE

Bottom of Preformed Fabric Pad Table	
Girder	ELEVATION
N1	*
N2	416.90
N3	417.00
N4	416.82
N5	*
N6	*

* Shim Plate not Required

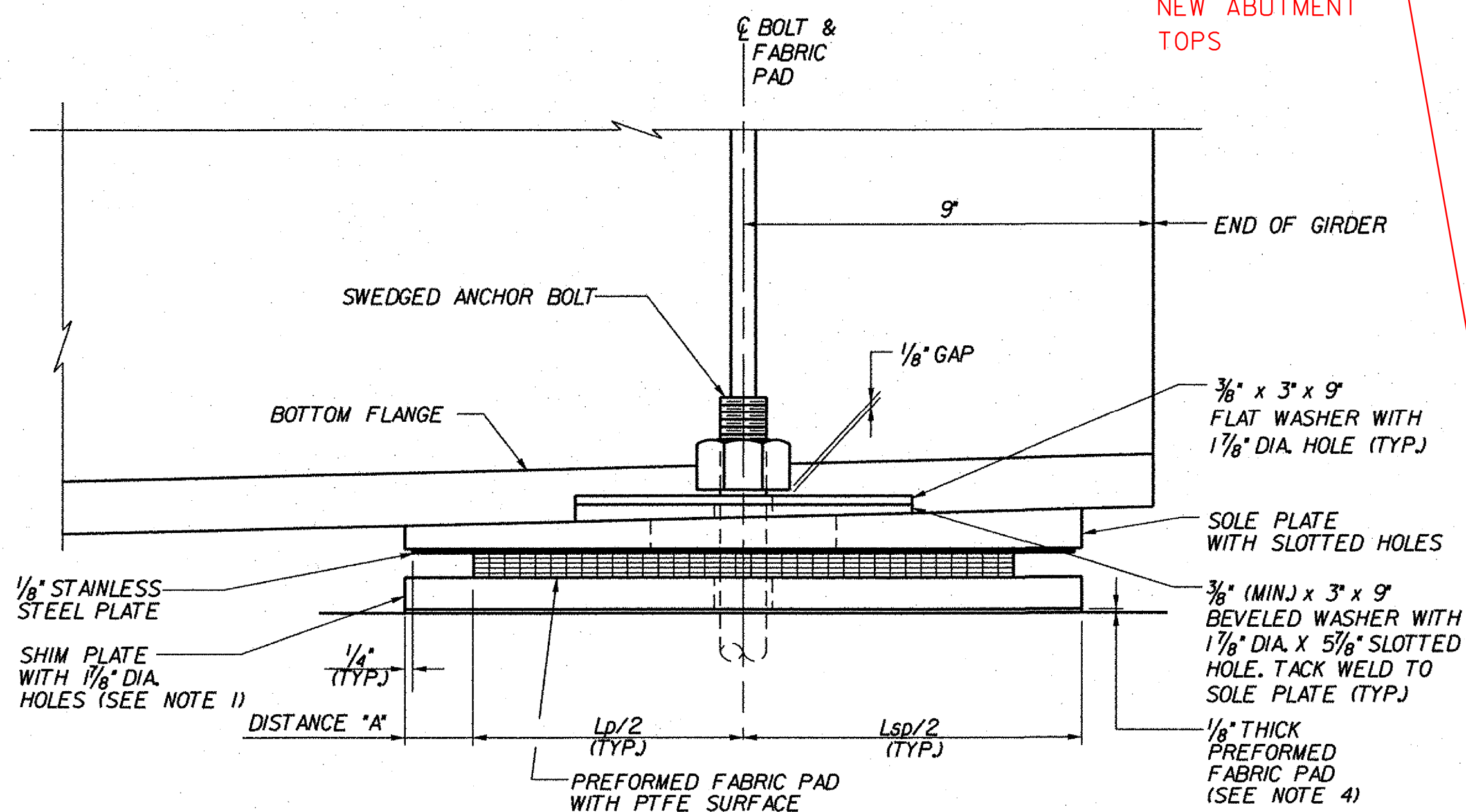
Bottom of Preformed Fabric Pad Table	
Girder	ELEVATION
S1	*
S2	410.20
S3	410.36
S4	410.20
S5	*

* Shim Plate not Required

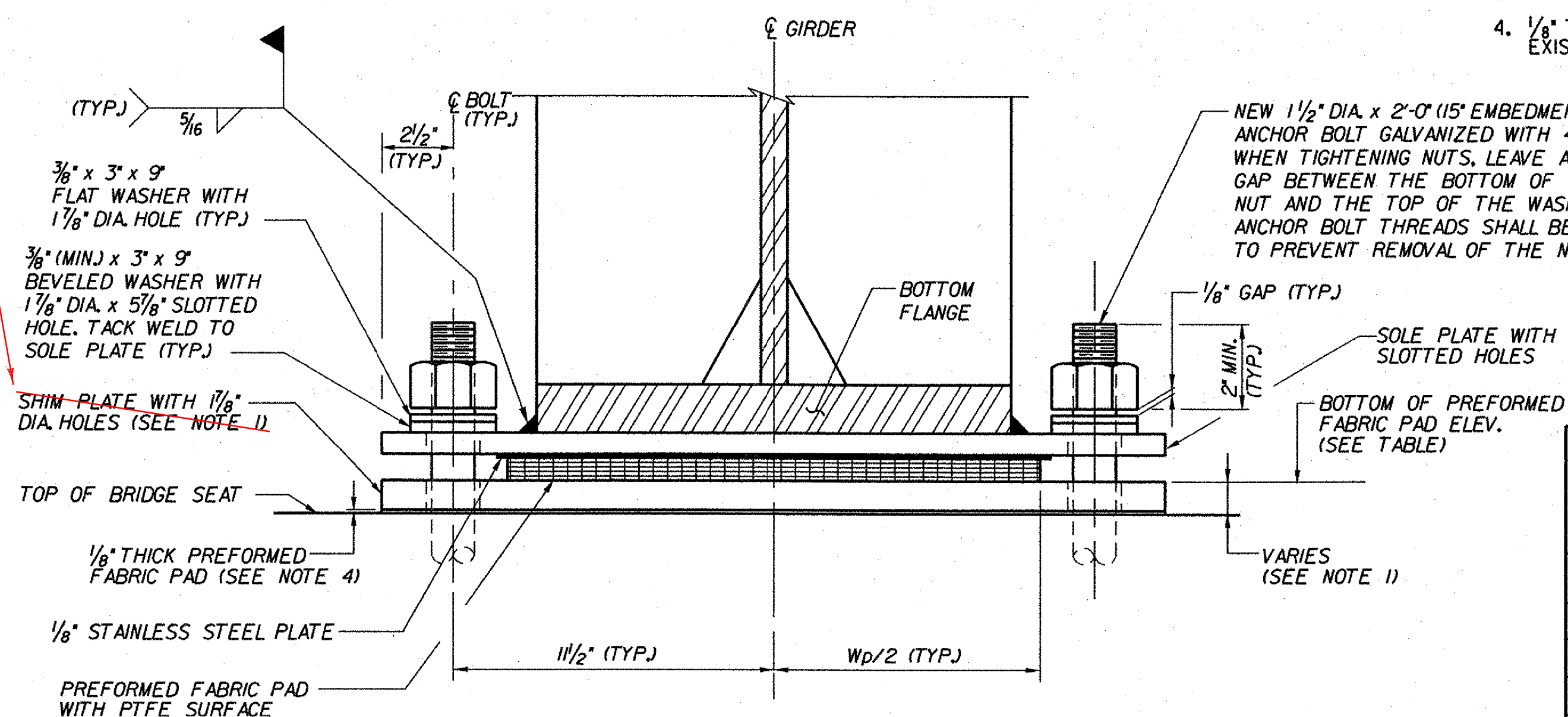
ABUTMENTS:
 WERE REPAIRED TO PROPER
 BRIDGE SEAT ELEVATION
 ELIMINATING SHIM PLATES.

NOTES:

- THE CONTRACTOR SHALL TAKE ELEVATIONS OF EACH EXISTING INTERIOR BEARING SEAT AND ORDER SHIM PLATES OF SUFFICIENT THICKNESS TO EQUAL THE DIFFERENCE BETWEEN THE EXISTING BEARING SEAT ELEVATION AND THE NEW BOTTOM OF PREFORMED FABRIC PAD ELEVATION. ALL COSTS SHALL BE INCLUDED IN ITEM 531.0, 'BEARING DEVICE ASSEMBLY, PREFORMED FABRIC PAD'. SHIM PLATE DETAILS SHALL BE SUBMITTED WITH THE BEARING DRAWINGS.
- SOLE PLATES SHALL BE INSTALLED WITH LARGER THICKNESS ON THE SIDE OF INCREASING ROADWAY STATIONING.
- FOR BEARING NOTES, SEE BEARING NOTES & TABLES (3N&S) BRIDGE SHEET BR132.
- 1/8" THICK PREFORMED FABRIC PAD SHALL BE REQUIRED BETWEEN EXISTING BRIDGE SEAT AND NEW SHIM PLATES.



SECTION A-A
 NOT TO SCALE



SECTION B-B
 NOT TO SCALE

**SHEET BR130A - EXPANSION
 (BR3N, ABUT. 2 AND BR3S, ABUT. 1)**

**STATE OF VERMONT
 AGENCY OF TRANSPORTATION**

Town Of	GUILFORD	Bridge No.	3N&S
Highway No.	I-91	Log Sta.	
		Surv. Sta.	
I-91 OVER BROAD BROOK & BROAD BROOK ROAD			
EXPANSION BEARINGS - FABRIC PAD (3N&S)			
Designed By	M.J. MOZER	Drawn By	G.K. MORZE
Checked By	Date	Bridge Design Supervisor	Date
P.W. SZUSTAK	01/03	J.P. HALSTEAD	01/03
PROJECT	GUILFORD	PROJECT NO.	IM 091-(133)
		Date	04/25/08
TVGA CAD Drawing No.	G EXPB DT.dgn	Bridge Sheet No.	BR130A
		Sheet	56A of 114