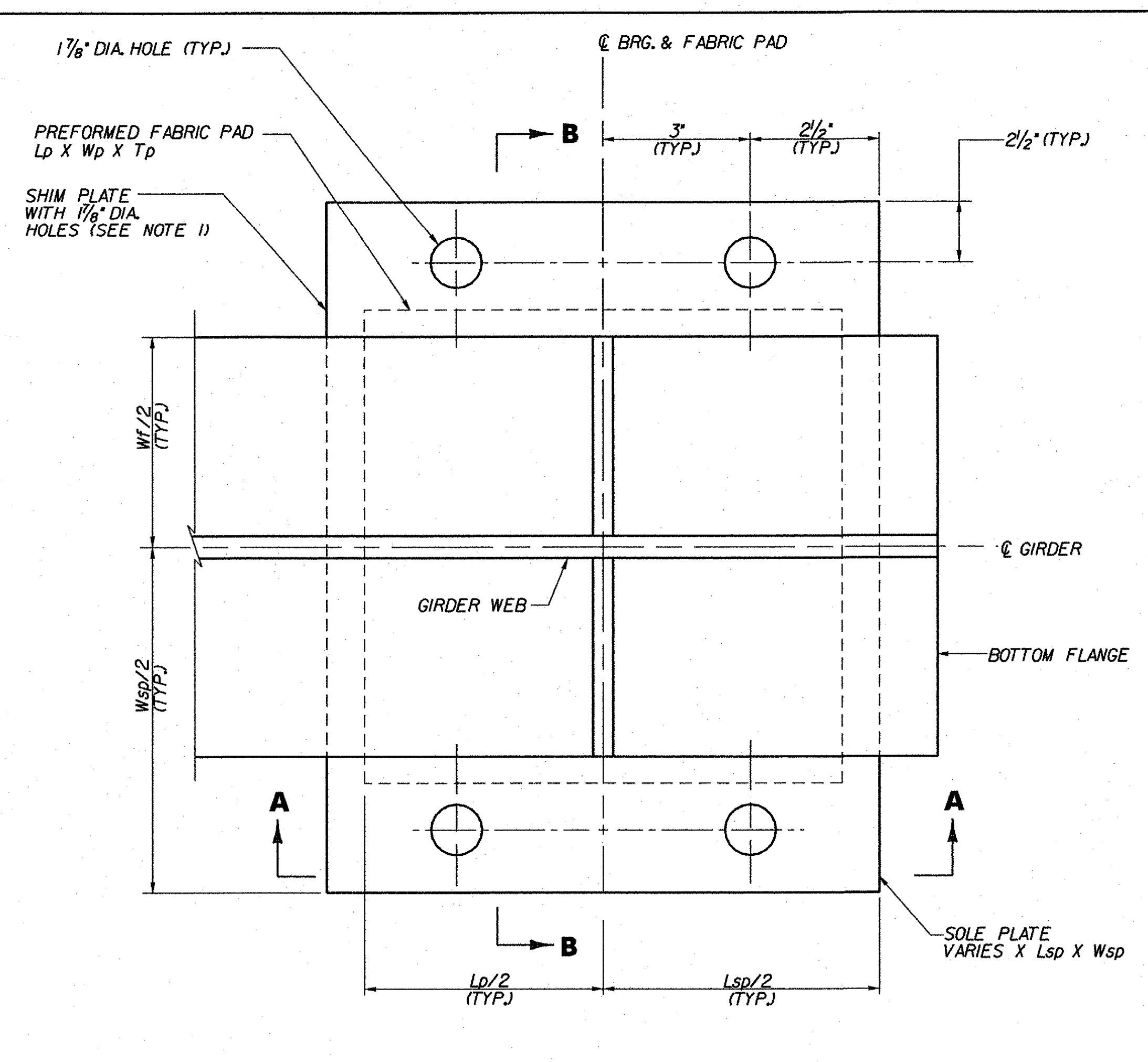


FIXED ABUTMENT BEARING GEOMETRY										
BRIDGE NO.	SUB-STRUCTURE UNIT	BEARING PAD			SOLE PLATE			SHIM PLATE		BEAM FLANGE
		Lp	Wp	Tp	Lsp	Wsp	Tsp	Lsh	Wsh	Wf
3N	ABUT. 1	8"	18"	1 1/2"	11"	28"	1 7/16"	11"	28"	16"
3S	ABUT. 2	8"	18"	1 1/2"	11"	28"	1 5/16"	11"	28"	16"

Bottom of Preformed Fabric Pad Table	
Girder	ELEVATION
	3N-Abut. 1
N1	*
N2	410.21
N3	410.31
N4	410.13
N5	*
N6	*

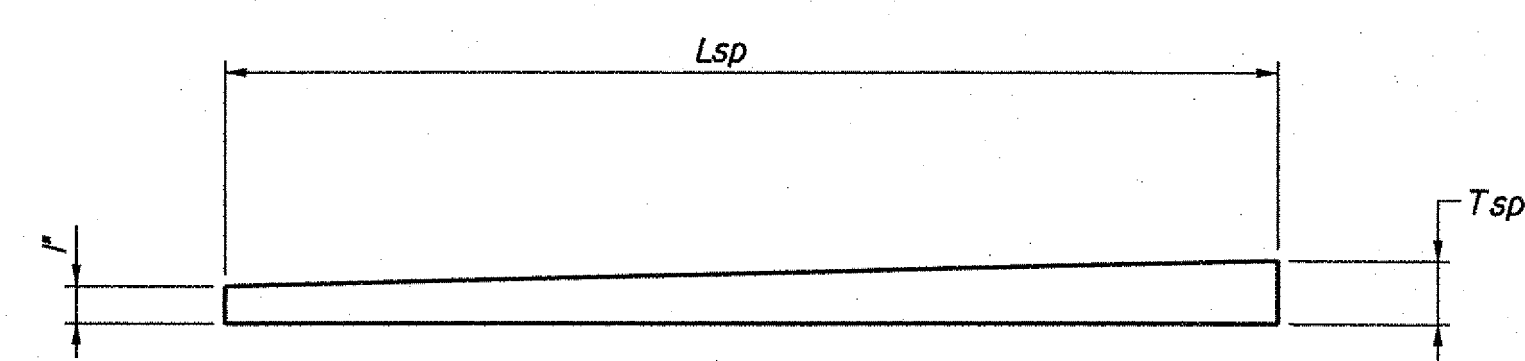
Bottom of Preformed Fabric Pad Table	
Girder	ELEVATION
	3S-Abut. 2
S1	*
S2	416.89
S3	417.04
S4	416.89
S5	*

\* Shim Plate not Required



(ANCHOR BOLTS NOT SHOWN FOR CLARITY)

**PLAN**  
NOT TO SCALE

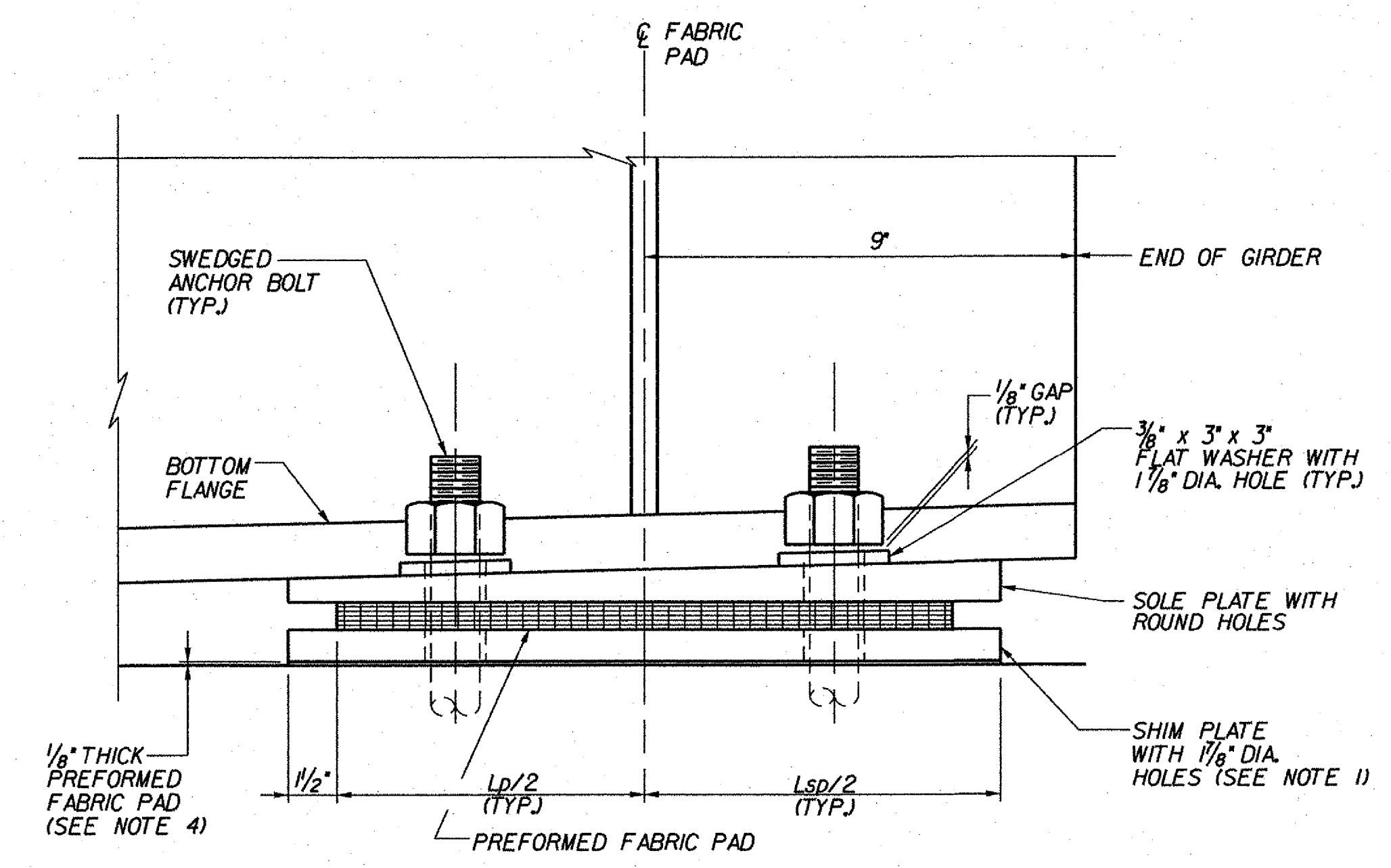


**SIDE VIEW SOLE PLATE**  
NOT TO SCALE

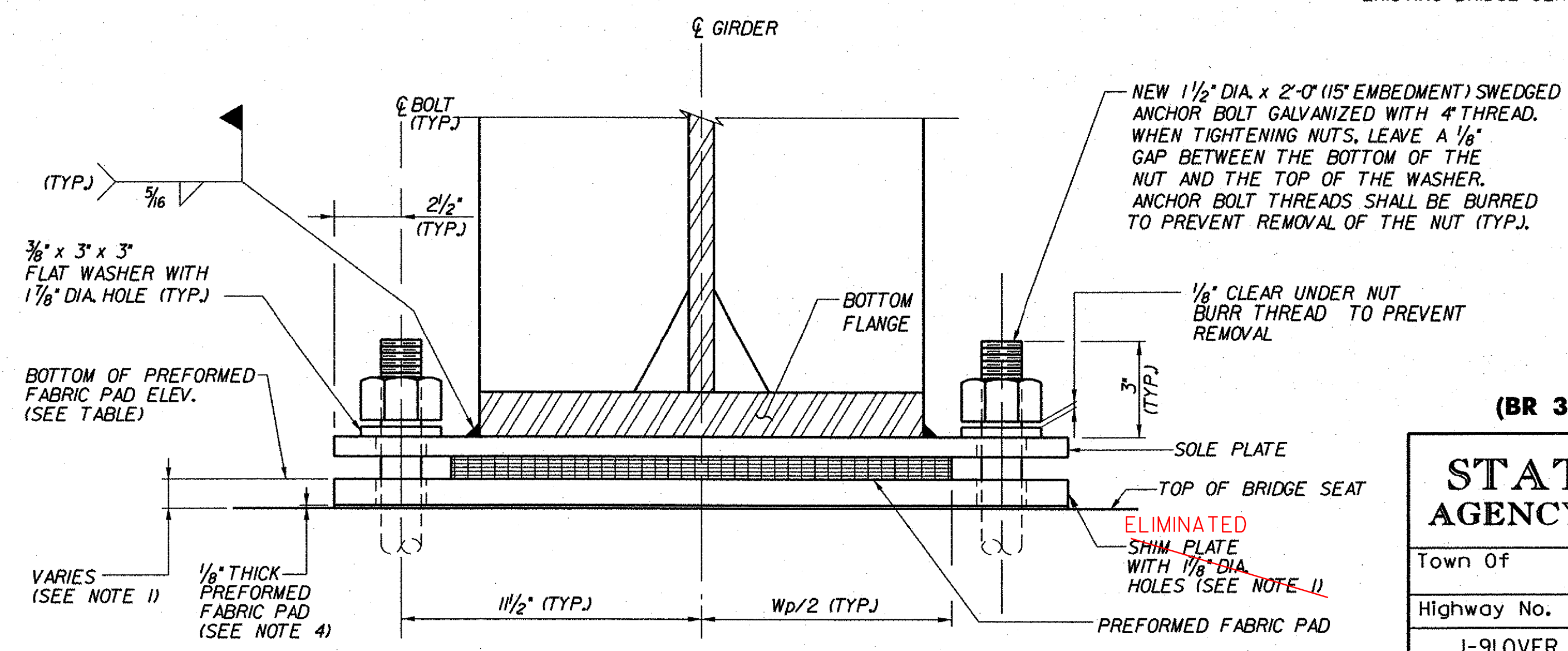
ABUTMENTS:  
WERE REPAIRED TO NEW  
BRIDGE SEAT ELEVATION  
ELIMINATING SHIM PLATES.

**NOTES:**

1. THE CONTRACTOR SHALL TAKE ELEVATIONS OF EACH EXISTING INTERIOR BEARING SEAT AND ORDER SHIM PLATES OF SUFFICIENT THICKNESS TO EQUAL THE DIFFERENCE BETWEEN THE EXISTING BEARING SEAT ELEVATION AND THE NEW BOTTOM OF PREFORMED FABRIC PAD ELEVATION. ALL COSTS SHALL BE INCLUDED IN ITEM 531.0, "BEARING DEVICE ASSEMBLY, PREFORMED FABRIC PAD". SHIM PLATE DETAILS SHALL BE SUBMITTED WITH THE BEARING DRAWINGS.
2. SOLE PLATES SHALL BE INSTALLED WITH LARGER THICKNESS ON THE SIDE OF INCREASING ROADWAY STATIONING.
3. FOR BEARING NOTES, SEE BEARING NOTES & TABLES (3N&S) BRIDGE SHEET BR132.
4. 1/8" THICK PREFORMED FABRIC PAD SHALL BE REQUIRED BETWEEN EXISTING BRIDGE SEAT AND NEW SHIM PLATES.



**SECTION A-A**  
NOT TO SCALE



**SECTION B-B**  
NOT TO SCALE

**SHEET BR130 - FIXED**  
**(BR 3N, ABUT. 1 AND BR 3S, ABUT. 2)**

**STATE OF VERMONT**  
**AGENCY OF TRANSPORTATION**

Town Of	GUILFORD	Bridge No.	<b>3N&amp;S</b>
Highway No.	I-91	Log Sta.	
	I-91 OVER BROAD BROOK & BROAD BROOK ROAD	Surv. Sta.	
<b>FIXED BEARINGS - FABRIC PAD (3N&amp;S)</b>			
Designed By	M.J. MOZER	Drawn By	G.K. MORZE
Checked By	P.W. SZUSTAK	Bridge Design Supervisor	J.P. HALSTEAD
	Date 01/03	Date	01/03
PROJECT	GUILFORD	PROJECT NO.	IM 091-I(33)
		Date	04/28/08
		Bridge Sheet No.	BR130
		Sheet	56 of 114