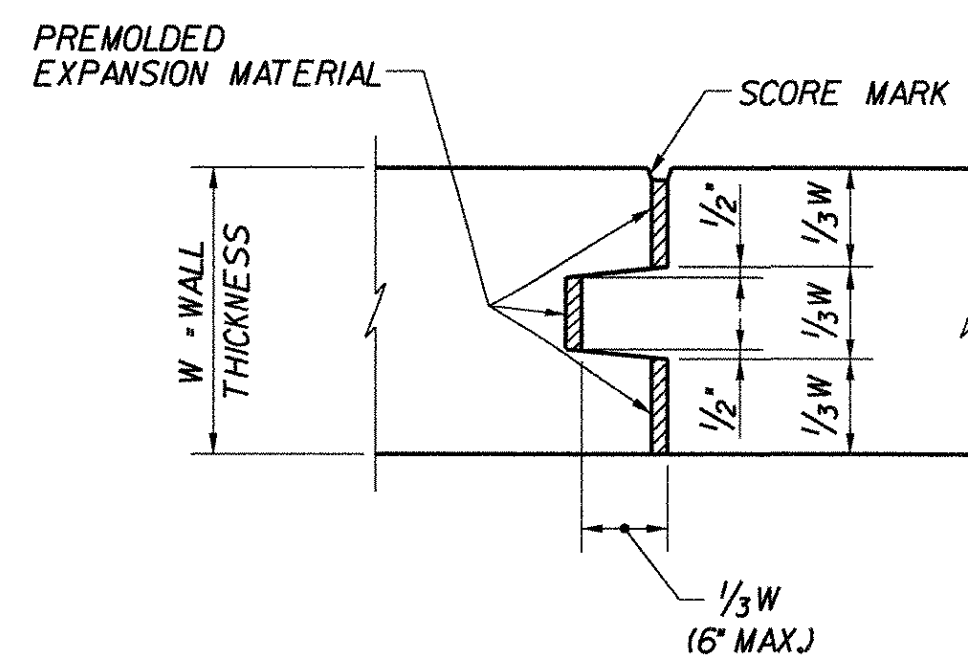
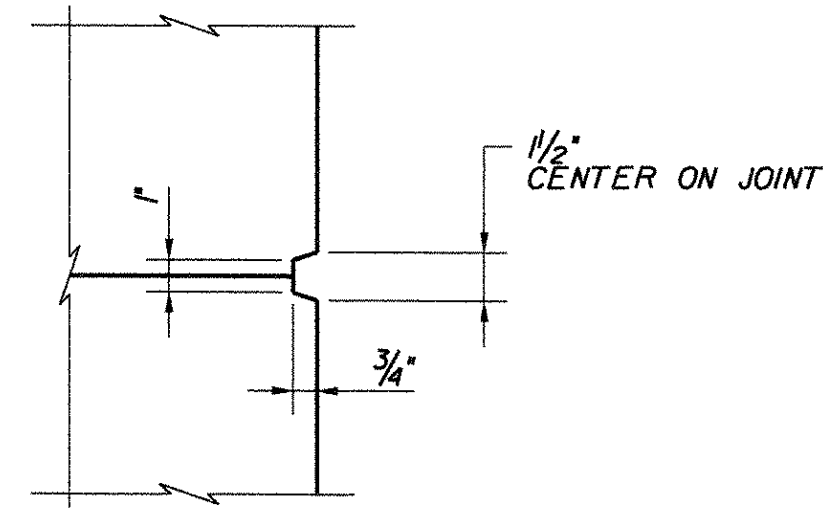


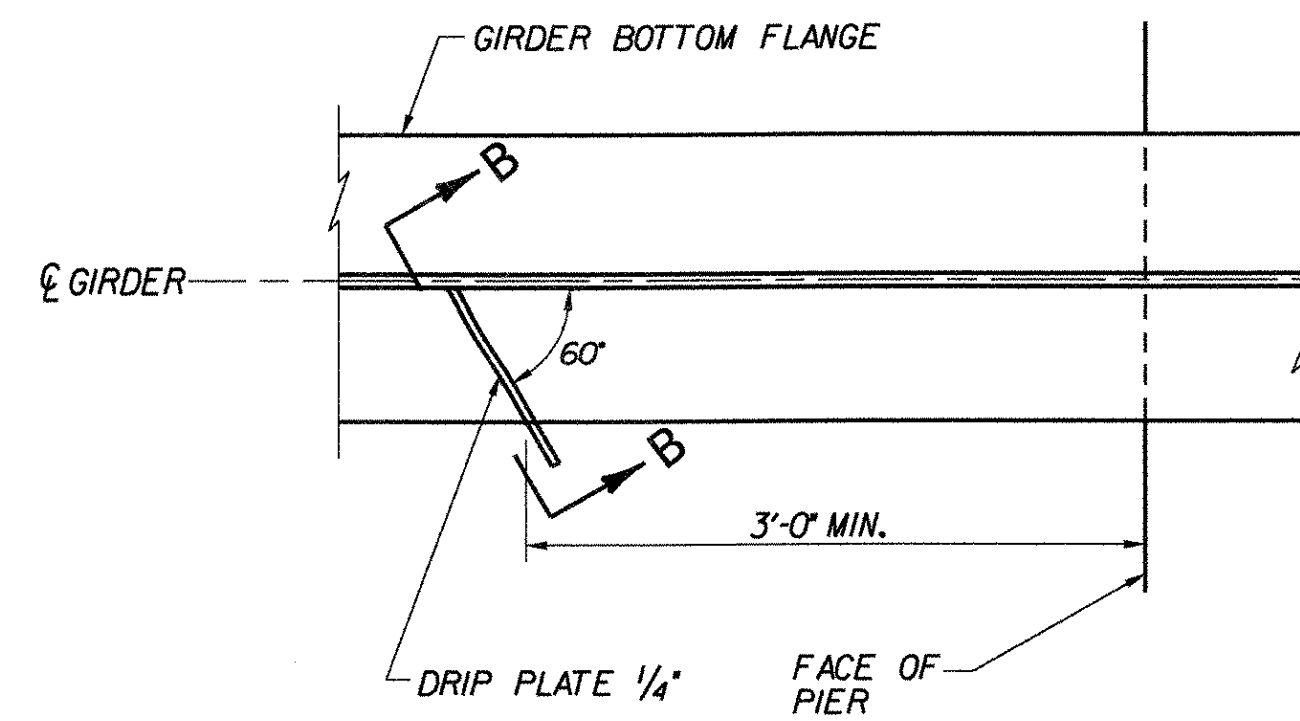
TYPICAL CONCRETE CONSTRUCTION JOINT
NOT TO SCALE



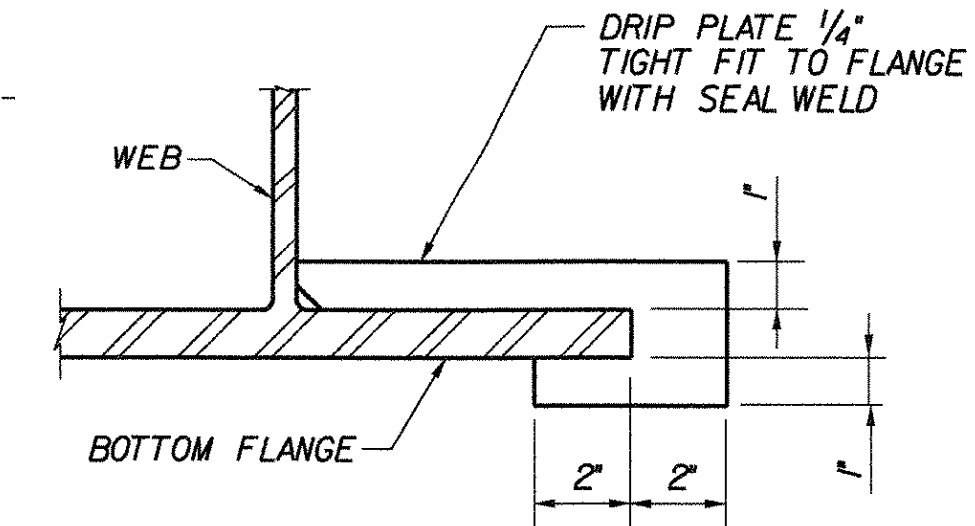
TYPICAL CONCRETE EXPANSION JOINT
NOT TO SCALE



SCORE MARK DETAIL
NOT TO SCALE



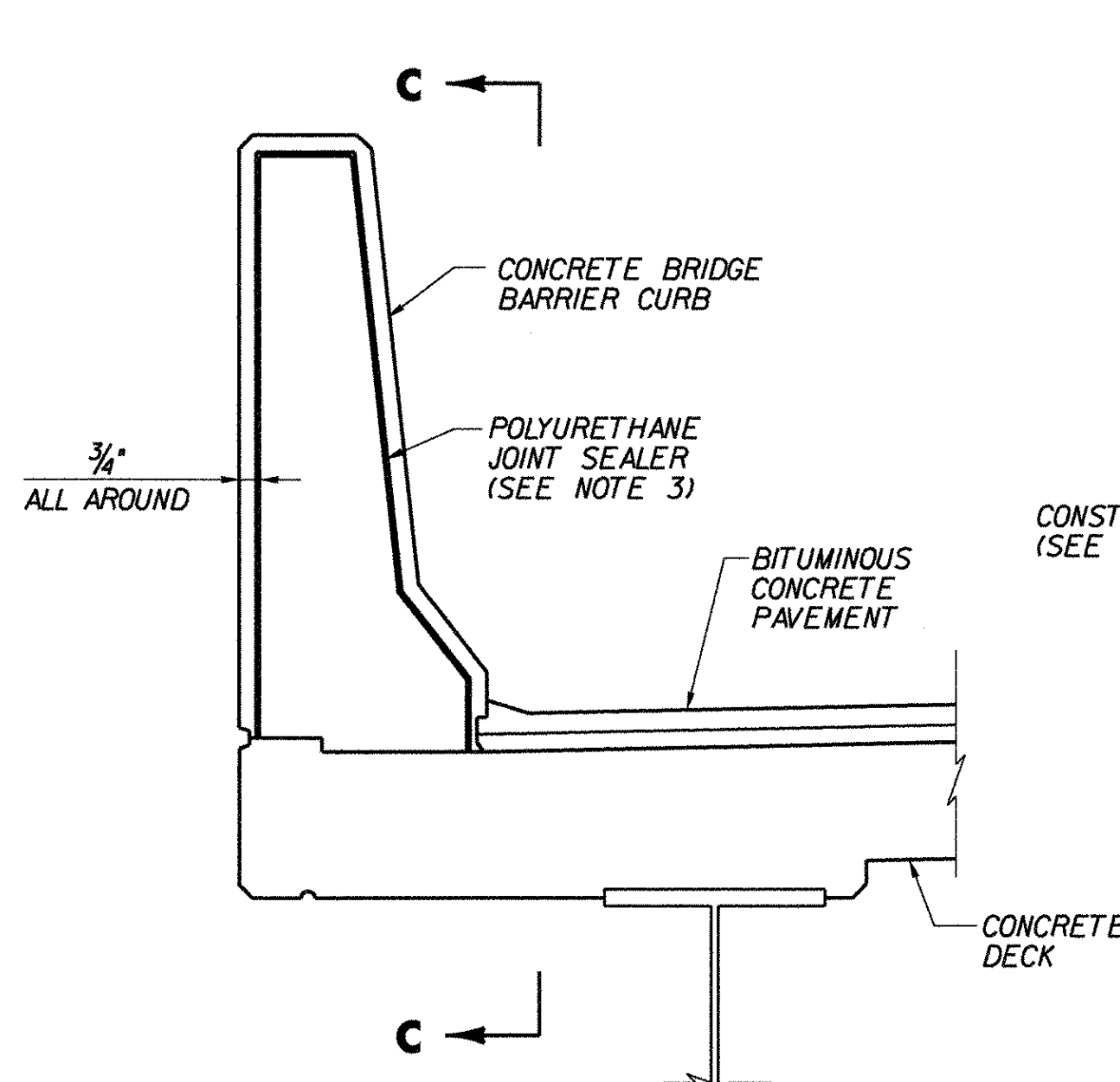
PLAN



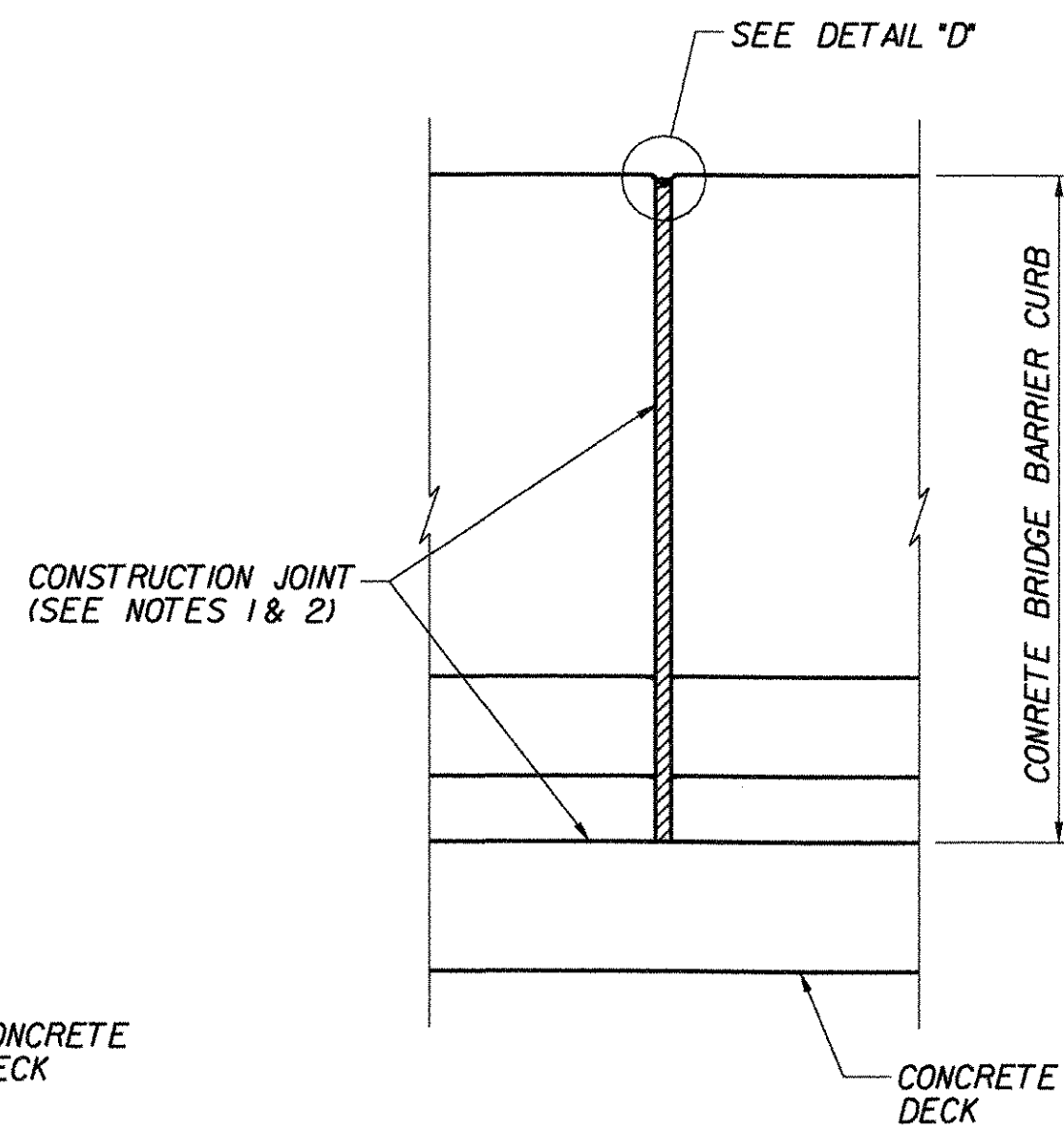
SECTION B-B

DRIP PLATE DETAIL
NOT TO SCALE

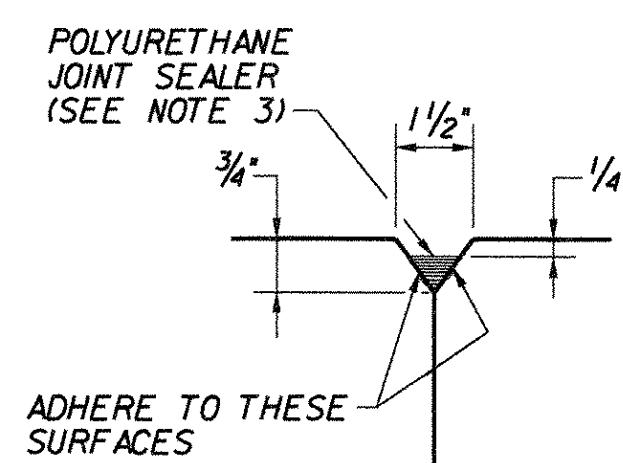
NOTE: DRIP PLATES SHALL BE PLACED ON OUTSIDE EDGE OF FASCIA GIRDERS ON THE HIGH SIDE OF ALL PIERS AND LOW ABUTMENTS OR AS INDICATED ON PROJECT PLANS.



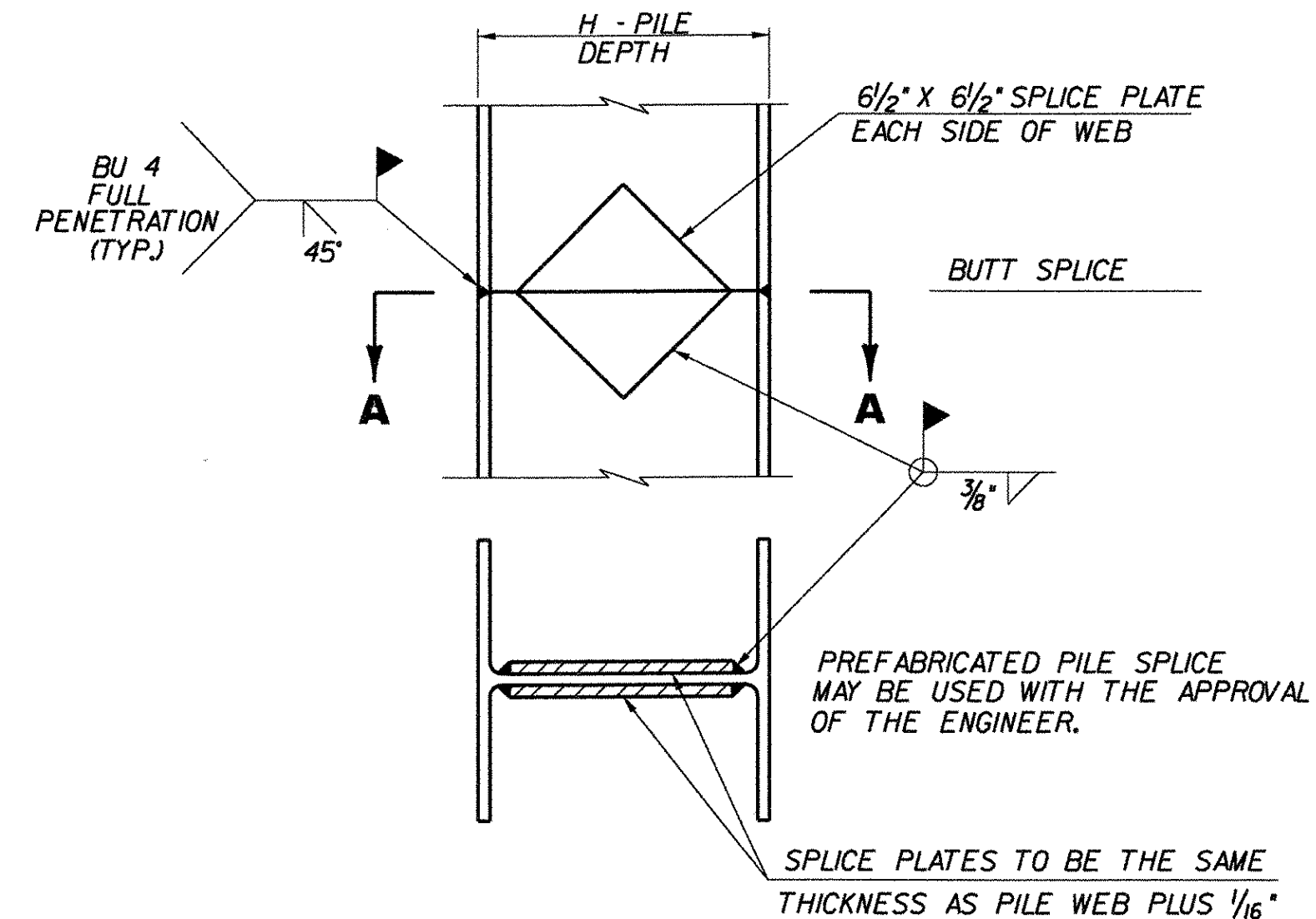
TYPICAL SECTION THRU CONCRETE CURB CONSTRUCTION JOINT



SECTION C-C



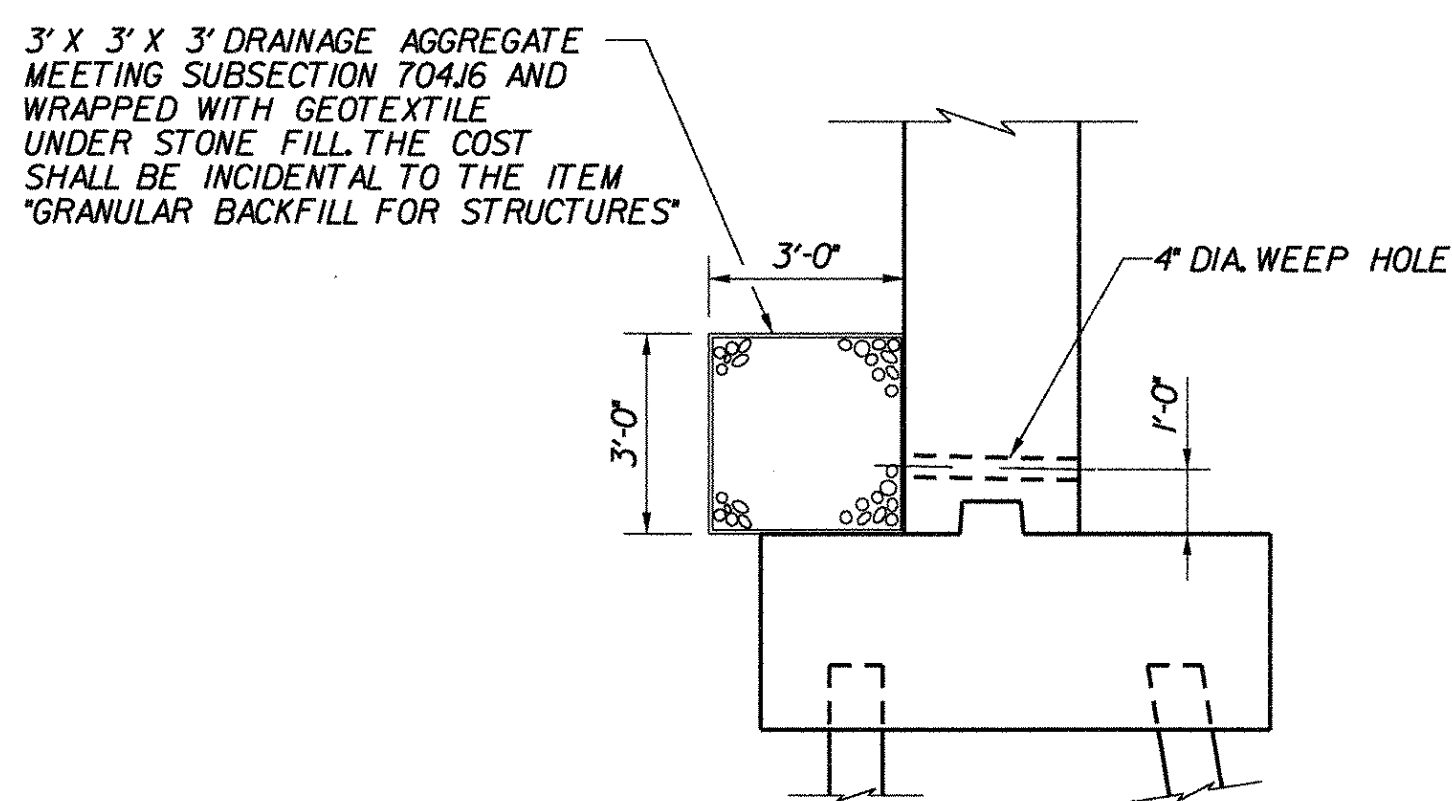
DETAIL "D"



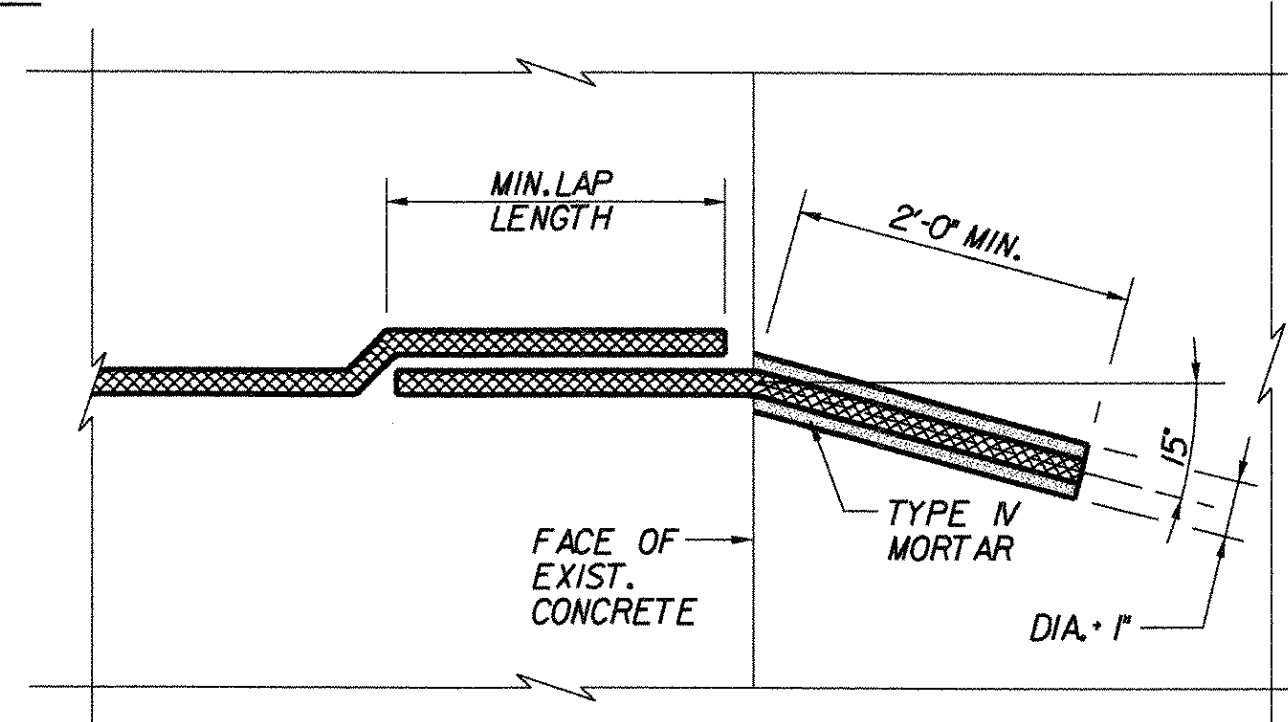
SECTION A-A
DETAIL OF PILE SPLICE
NOT TO SCALE

NOTES:

- CONSTRUCTION JOINTS THROUGH CONCRETE BARRIER CURB SHALL BE SPACED MAXIMUM 20'-0" CENTER TO CENTER. CONCRETE SHALL BE PLACED IN ALTERNATING SECTIONS WITH A MINIMUM OF 48 HOURS DELAY BETWEEN ADJACENT POURS.
- LONGITUDINAL REINFORCING SHALL PASS THROUGH CONCRETE CURB CONSTRUCTION JOINTS.
- POLYURETHANE JOINT SEALER, PER SUBSECTION 524.06(c) OF THE SPECIFICATIONS, COLOR TO MATCH CONCRETE. COST SHALL BE INCIDENTAL TO ITEM 900.608, "SPECIAL PROVISION (BRIDGE RAILING, F-SHAPE CONCRETE).



TYPICAL WEEP HOLE DETAIL
NOT TO SCALE



TYPICAL DRILL AND GROUT DETAIL
NOT TO SCALE

STATE OF VERMONT
AGENCY OF TRANSPORTATION

Town Of	GUILFORD	Bridge No.	3N&S
Highway No.	1-91	Log Sta.	
		Surv. Sta.	
1-91 OVER BROAD BROOK & BROAD BROOK ROAD			
TYPICAL BRIDGE DETAILS (3N&S)			
Designed By	M.J. MOZER	Drawn By	G.K. MORZE
Checked By	Date	Bridge Design Supervisor	
P.W. SZUSTAK	01/03	J.P. HALSTEAD	Date 01/03
PROJECT	GUILFORD	PROJECT NO.	IM 091-I(33)
TVGA CAD Drawing No.	G-BRDT.dgn	Date	06/10/08
Bridge Sheet No.	BR129	Sheet	55 of 114