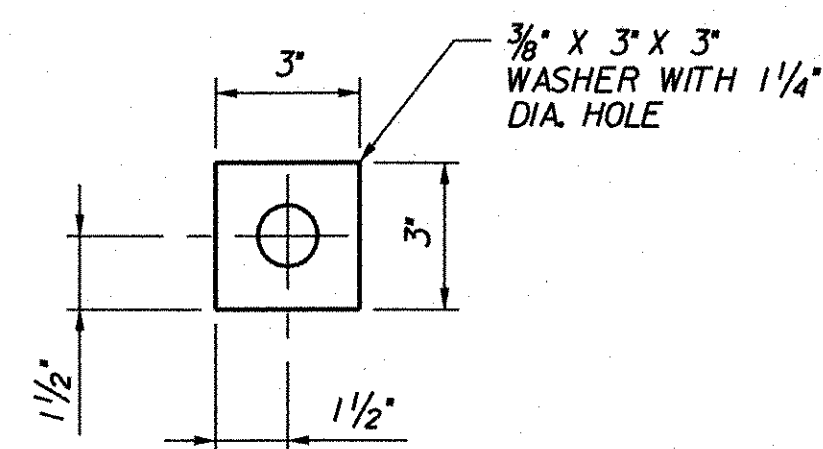


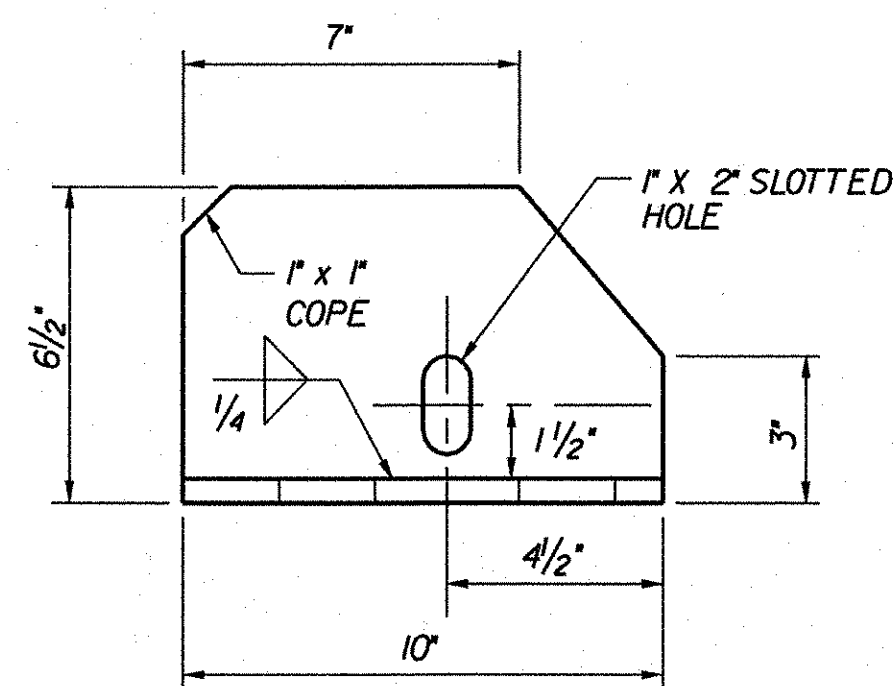
TYPICAL SECTION AT GIRDERS

SCALE: 3" = 1'-0"



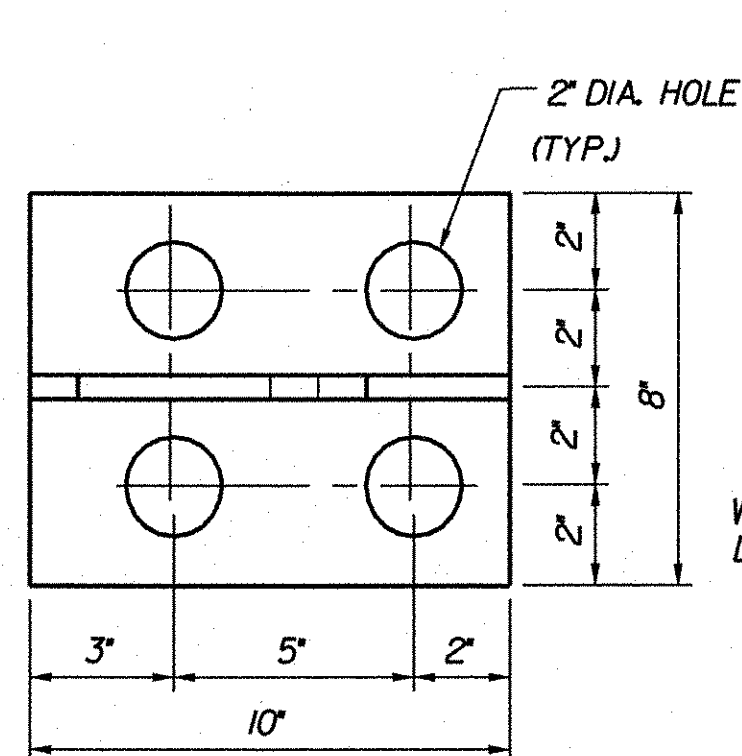
WASHER FOR BRACKET

SCALE: 3" = 1'-0"



BRACKET ELEVATION

SCALE: 3" = 1'-0"



BRACKET PLAN

SCALE: 3" = 1'-0"

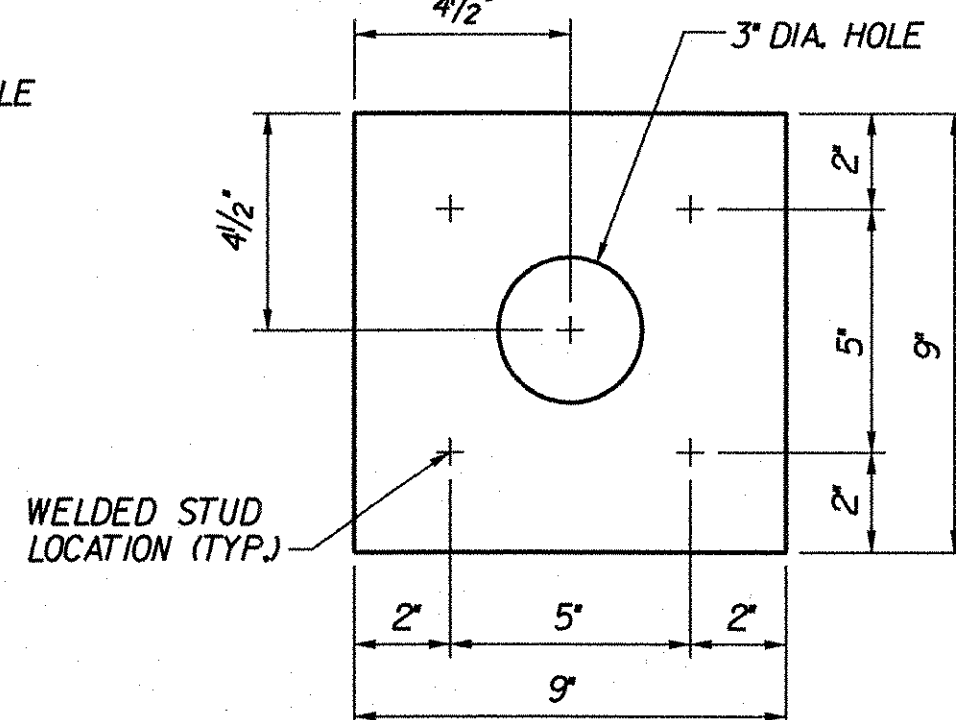
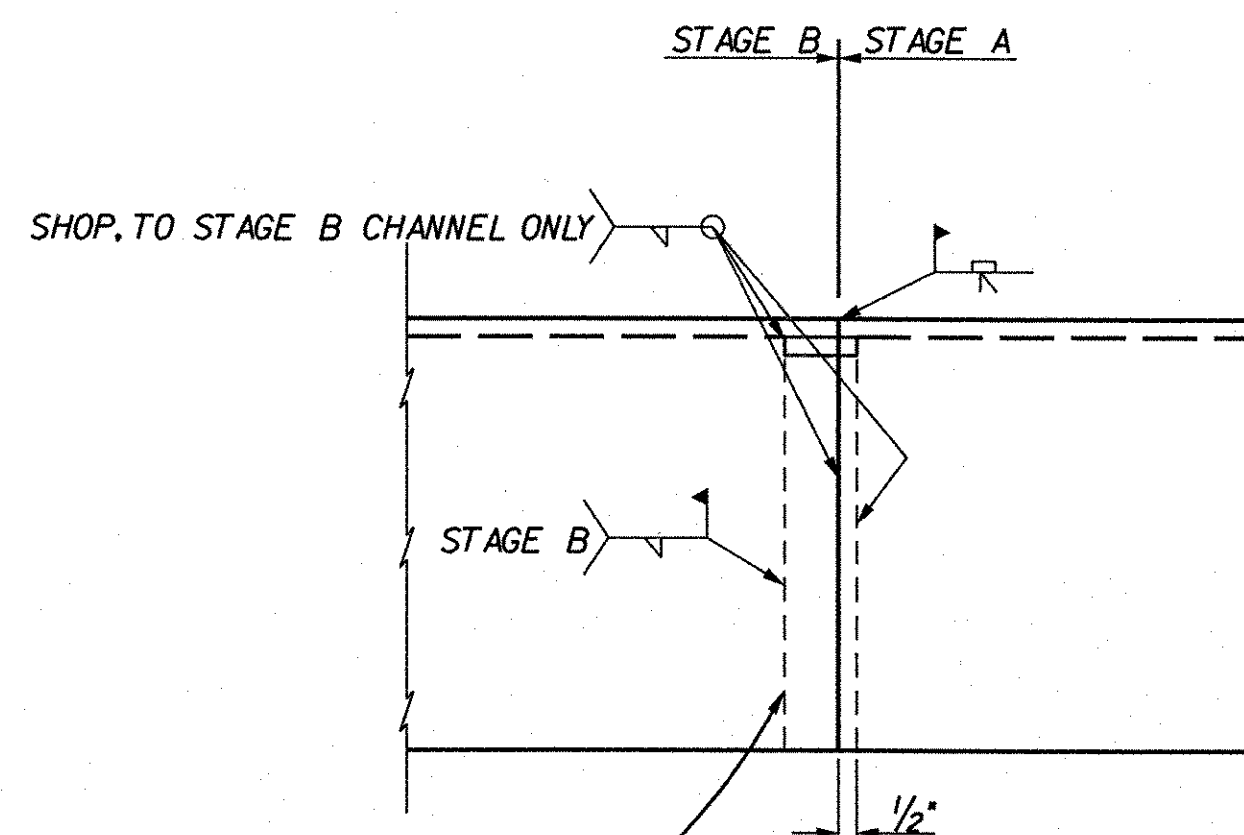


PLATE PLAN

SCALE: 3" = 1'-0"

NOTE: THIS PLATE DOES NOT NEED TO BE GALVANIZED.



SPLICE DETAIL

SCALE: 3" = 1'-0"

NOTE: ALL PLATES 1/2" THICK

NOTES:

1. DETAILS ON THIS SHEET ARE FOR ITEM 516.J2, 'BRIDGE EXPANSION JOINT, FINGER PLATE'.
2. FOR BRIDGE 3S, PREFORMED FABRIC TROUGH SHALL BE CONTINUOUS. FOR BRIDGE 3N, TROUGH SHALL BE FURNISHED IN TWO PIECES, WITH A MINIMUM OVERLAP OF 2'-0". TROUGH MATERIAL SHALL CONFORM TO SUBSECTION 707.07.
3. BUTYL RUBBER TAPE SHALL CONFORM TO SUBSECTION 707.12.
4. THE FINAL FINISH OF THE EXPANSION DEVICE SHALL BE COVERED DURING THE PLACING OF BRIDGE DECK CONCRETE.
5. STEEL FINGER PLATES SHALL BE AASHTO M270 GRADE 50. ALL OTHER STEEL COMPONENTS SHALL BE AASHTO M270 GRADE 36 UNLESS NOTED OTHERWISE. BOLTS, NUTS & WASHERS SHALL CONFORM TO AASHTO M164 TYPE 1, UNLESS NOTED OTHERWISE. ALL STEEL COMPONENTS SHALL BE GALVANIZED OR METALIZED PER SUBSECTION 506.15, UNLESS NOTED OTHERWISE.
6. PAYMENT FOR ITEM 516.J2, 'BRIDGE EXPANSION JOINT, FINGER JOINT' SHALL INCLUDE THE FABRICATION AND ERECTION OF THE COMPLETE JOINT ASSEMBLY INCLUDING ALL STEEL PLATES, BRACKETS, ANGLES, WELDED STUDS OR RODS, PREFORMED FABRIC DRAIN TROUGH MATERIAL AND PLASTIC DRAIN TUBES, BUTYL RUBBER TAPE, JOINT FILLER AND ANY OTHER MISCELLANEOUS MATERIAL NECESSARY TO INSTALL JOINT.
7. FOR BRIDGE 3N, EACH 8 x 8 x 1 ANGLE SHALL BE FURNISHED IN TWO PIECES. A BUTT JOINT IS REQUIRED AT THE LIMIT OF STAGE A FINGER JOINT HARDWARE, AS SHOWN IN THE FINGER PLATE EXPANSION JOINT PLAN ON BRIDGE SHEET BR126. FOR BRIDGE 3S, EACH 8 x 8 x 1 ANGLE SHALL BE FURNISHED IN ONE CONTINUOUS PIECE.
8. EACH FINGER PLATE FOR BRIDGE 3N SHALL BE PROVIDED IN THREE PIECES. EACH FINGER PLATE FOR BRIDGE 3S SHALL BE PROVIDED IN TWO EQUAL LENGTHS. FOR CUTTING DETAILS, SEE FINGER JOINT DETAILS (1 OF 2), BRIDGE SHEET BR127.
9. COAT CONCRETE CONTACT SURFACES WITH EPOXY BONDING COMPOUND MEETING THE REQUIREMENTS OF SUBSECTION 719.02.
10. A DRIP BEAD OF 1/4" x 7" STRIP OF PREFORMED MATERIAL SHALL BE CEMENTED TO THE BOTTOM OF THE FABRIC TROUGH USING AN ADHESIVE APPROVED BY THE MANUFACTURER. THE DRIP BEAD SHALL BE APPLIED 1' FROM THE DOWNSPOUT END OF THE TROUGH.
11. FILL COUNTERBORED HOLES WITH HOT POURED JOINT SEALER MEETING THE REQUIREMENTS OF SUBSECTION 707.04(a) AFTER BOLT INSTALLATION. COSTS FOR THE WORK SHALL BE INCIDENTAL TO ITEM 516.J2.
12. PAYMENT FOR WATERSTOP SHALL BE INCIDENTAL TO ITEM 501.34, CONCRETE, HIGH PERFORMANCE CLASS B.
13. FABRIC TROUGHS SHALL BE INSTALLED SO THAT MINIMUM SLOPE IS 1% FOR POSITIVE DRAINAGE.
14. FABRIC TROUGH SHALL BE THOROUGHLY CLEANED AND FLUSHED AFTER PAVING OPERATION. PAYMENT INCLUDED UNDER CONTRACT ITEM 406.25.
15. EXPANSION JOINTS SHALL BE SHOP ASSEMBLED AND SHIPPED AS ONE UNIT FOR EACH BRIDGE JOINT.
16. A 1" DIAMETER PLASTIC DRAIN TUBE SHALL BE INSTALLED AS SHOWN AT THE FACE OF CURB. THE UPPER END IS TO BE PLUGGED WITH STEEL WOOL AND THE LOWER END IS TO EXTEND BELOW THE BOTTOM OF THE ADJACENT GIRDER. THE DRAIN TUBES SHALL BE FASTENED TO THE GIRDERS USING A METHOD APPROVED BY THE ENGINEER.
17. THREADED ROD AND ASSOCIATED NUTS AND WASHERS SHALL CONFORM TO SUBSECTION 714.04.

TEMPERATURE ADJUSTMENT TABLE	
TEMPERATURE	"A"
0°F	10 7/8"
15°F	10 9/16"
30°F	10 5/16"
45°F	10"
60°F	9 11/16"
75°F	9 3/8"
90°F	9 1/8"
105°F	8 13/16"

STATE OF VERMONT AGENCY OF TRANSPORTATION

Town Of	GUILFORD	Bridge No.	3N&S
Highway No.	I-91	Log Sta.	
		Surv. Sta.	
I-91 OVER BROAD BROOK & BROAD BROOK ROAD			
FINGER JOINT DETAILS (2 OF 2) (3N&S)			
Designed By	M. J. MOZER	Drawn By	G.K. MORZE
Checked By	Date	Bridge Design Supervisor	
P.W. SZUSTAK	01/03	J.P. HALSTEAD	Date 01/03
PROJECT	GUILFORD	PROJECT NO.	IM 091-1(33)