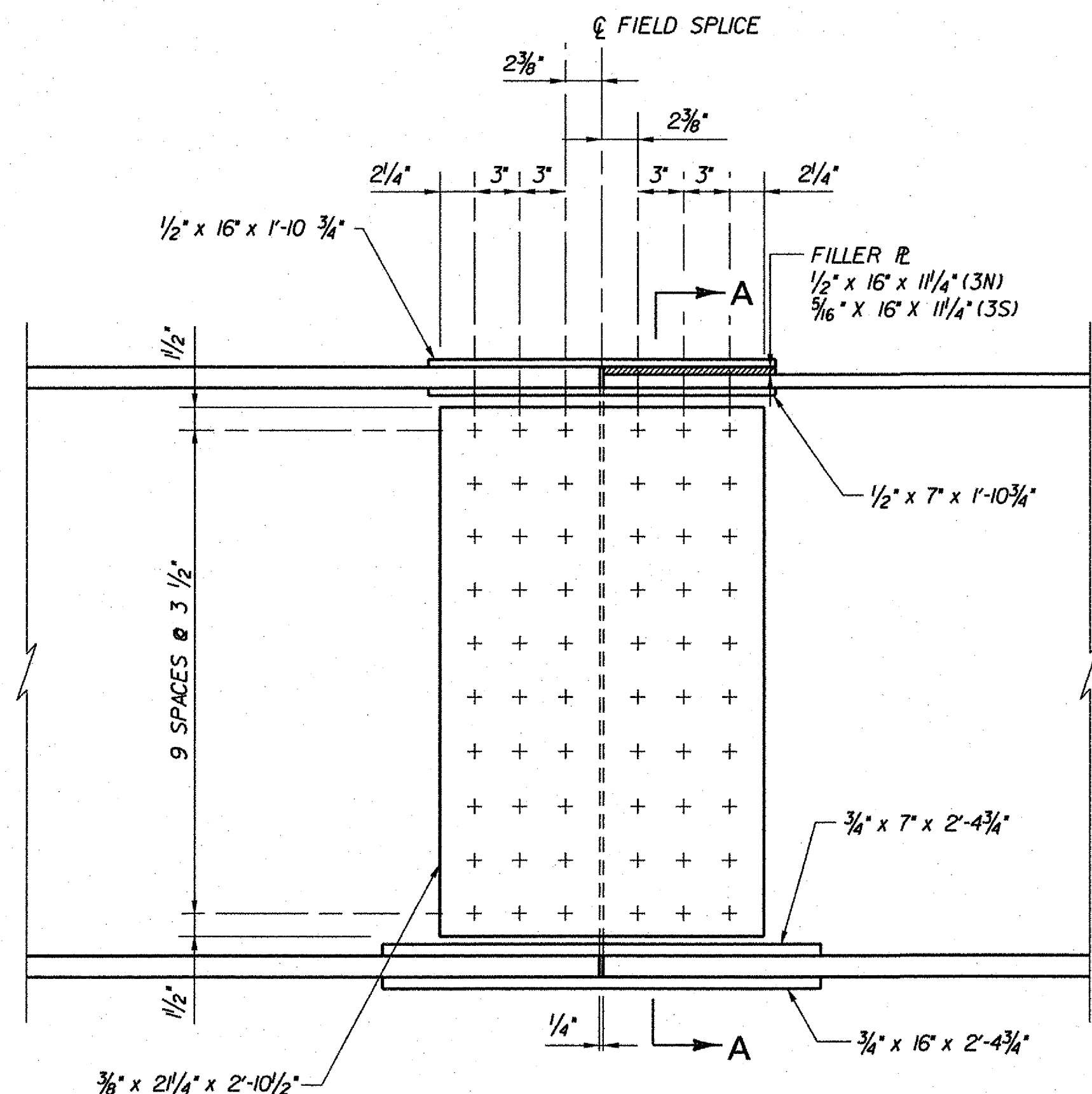
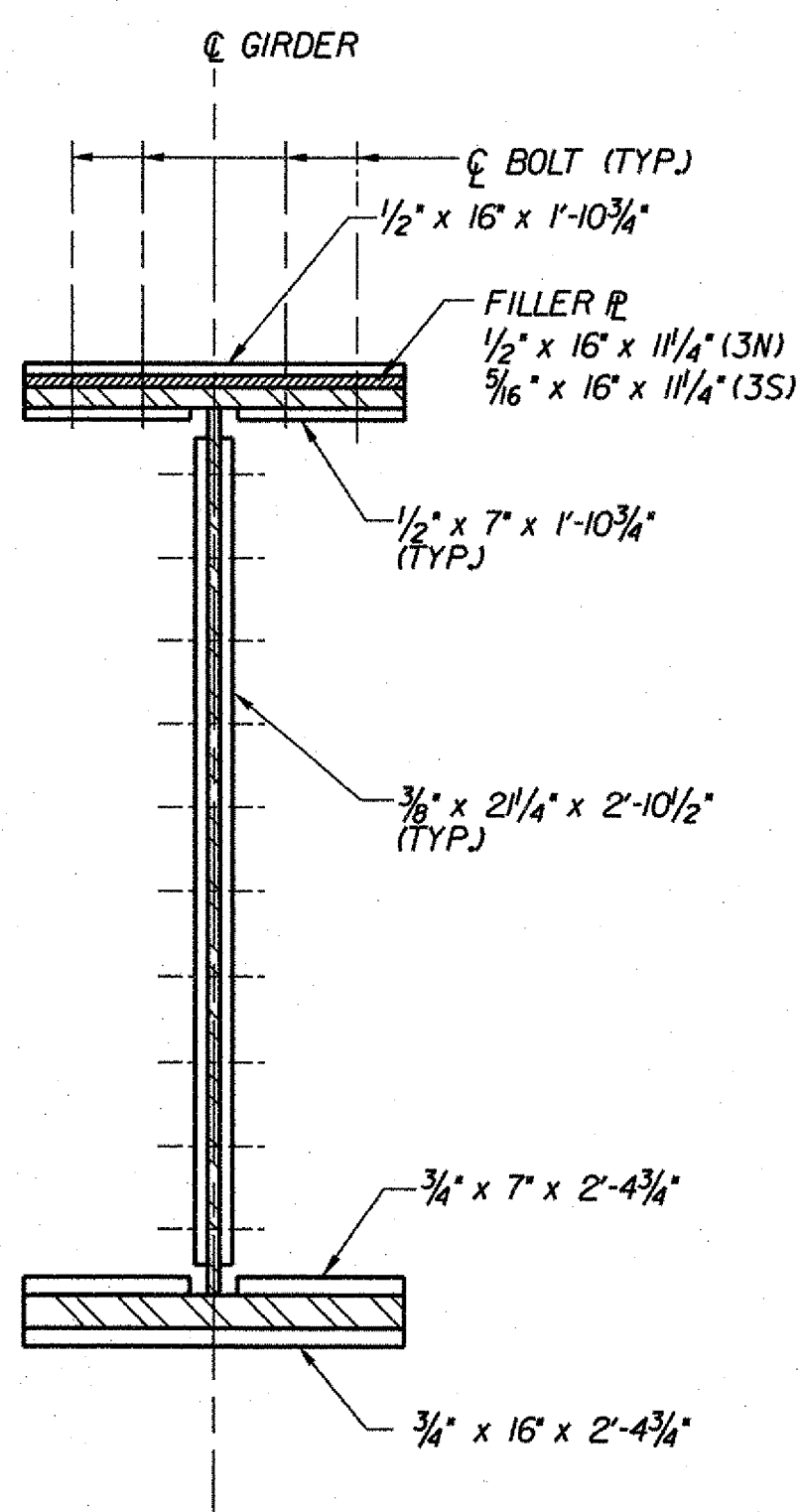


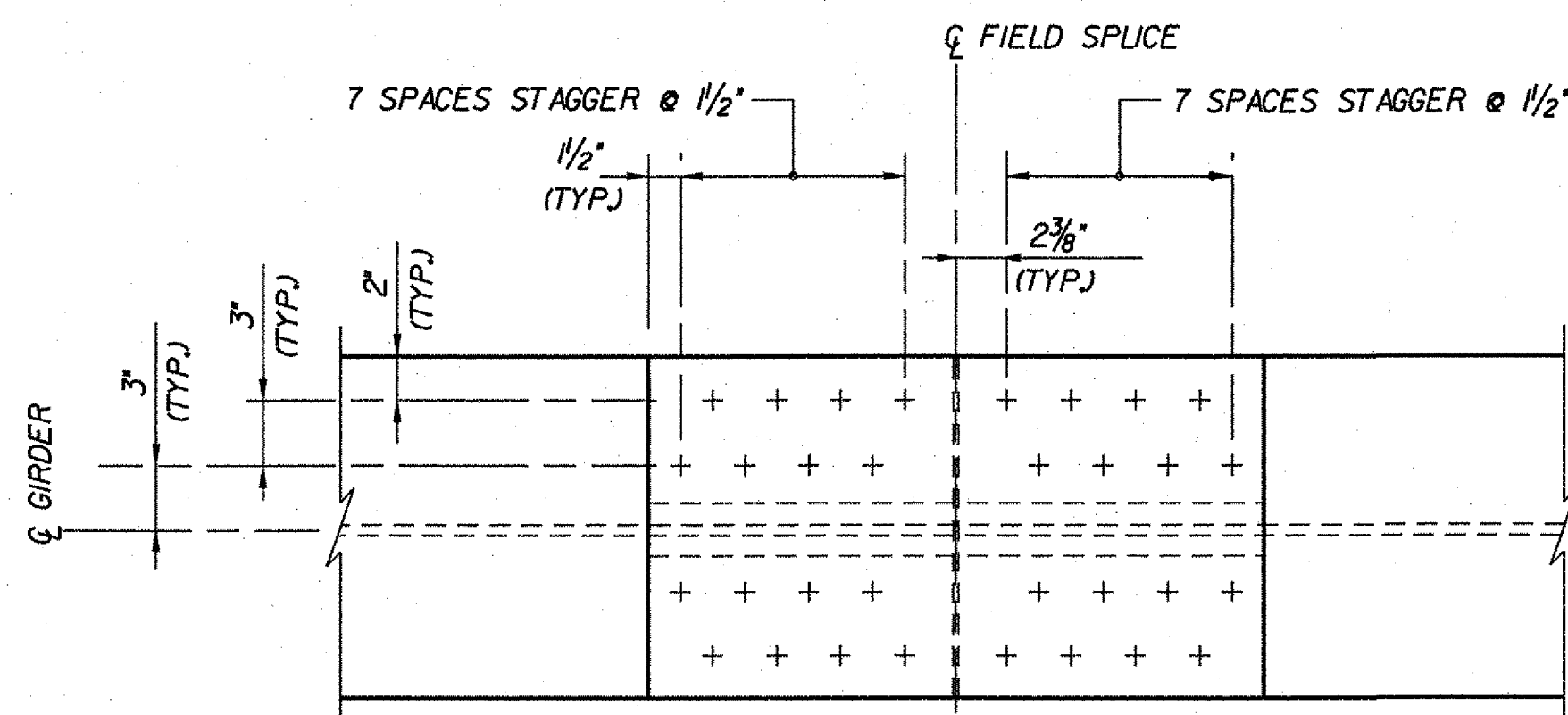
PLAN - TOP FLANGE



ELEVATION



SECTION A-A



PLAN - BOTTOM FLANGE

FIELD SPLICE DETAILS

SCALE: 1/2" = 1'-0"

SB BRIDGE: DTISQUIRTER WASHERS USED IN ADDITION TO THE FLAT WASHERS FOR PROPER TENSION INDICATION.

NOTES:

1. BOLTS SHALL BE 7/8" DIA. SUBSECTION 714.05 TYPE 3 HIGH STRENGTH BOLTS IN 1 1/8" DIA. HOLES. NUTS AND WASHERS SHALL ALSO CONFORM TO SUBSECTION 714.05. BOLT LENGTHS SHALL BE SUCH THAT THE BOLT THREADS ARE EXCLUDED FROM THE SHEAR PLANE.
2. ALL FIELD SPLICE CONNECTIONS SHALL BE "SLIP CRITICAL" WITH A CLASS B SURFACE (BLAST CLEAN SURFACE) FOR THE CONTACT SURFACES OF BOLTED PARTS.
3. STEEL FOR SPLICE & FILLER PLATES SHALL BE AASHTO M270 GRADE 50W (ASTM A709, GRADE 50W).
4. HOLES FOR FIELD SPLICES SHALL BE DRILLED IN THE SHOP WHILE GIRDERS ARE ASSEMBLED TO FIT BEARING ELEVATIONS.
5. ALL FLANGE AND WEB SPLICE PLATES SHALL BE CHARPY V-NOTCH TESTED IN ACCORDANCE WITH SECTION 714.01 OF THE SPECIFICATIONS.

**STATE OF VERMONT
AGENCY OF TRANSPORTATION**

Town Of	GUILFORD	Bridge No.	3N&S
Highway No.	I-91	Log Sta.	
		Surv. Sta.	
I-91 OVER BROAD BROOK & BROAD BROOK ROAD			
SPLICE DETAILS (3N&S)			
Designed By	M.J. MOZER	Drawn By	G.K. MORZE
Checked By	Date	Bridge Design Supervisor	Date
P.W. SZUSTAK	01/03	J.P. HALSTEAD	01/03
PROJECT	GUILFORD	PROJECT NO.	IM 091-K33
TVGA CAD Drawing No.	G NS SPLICE.dgn	Date	04/28/08
Bridge Sheet No.	BRI25	Sheet	51 of 114