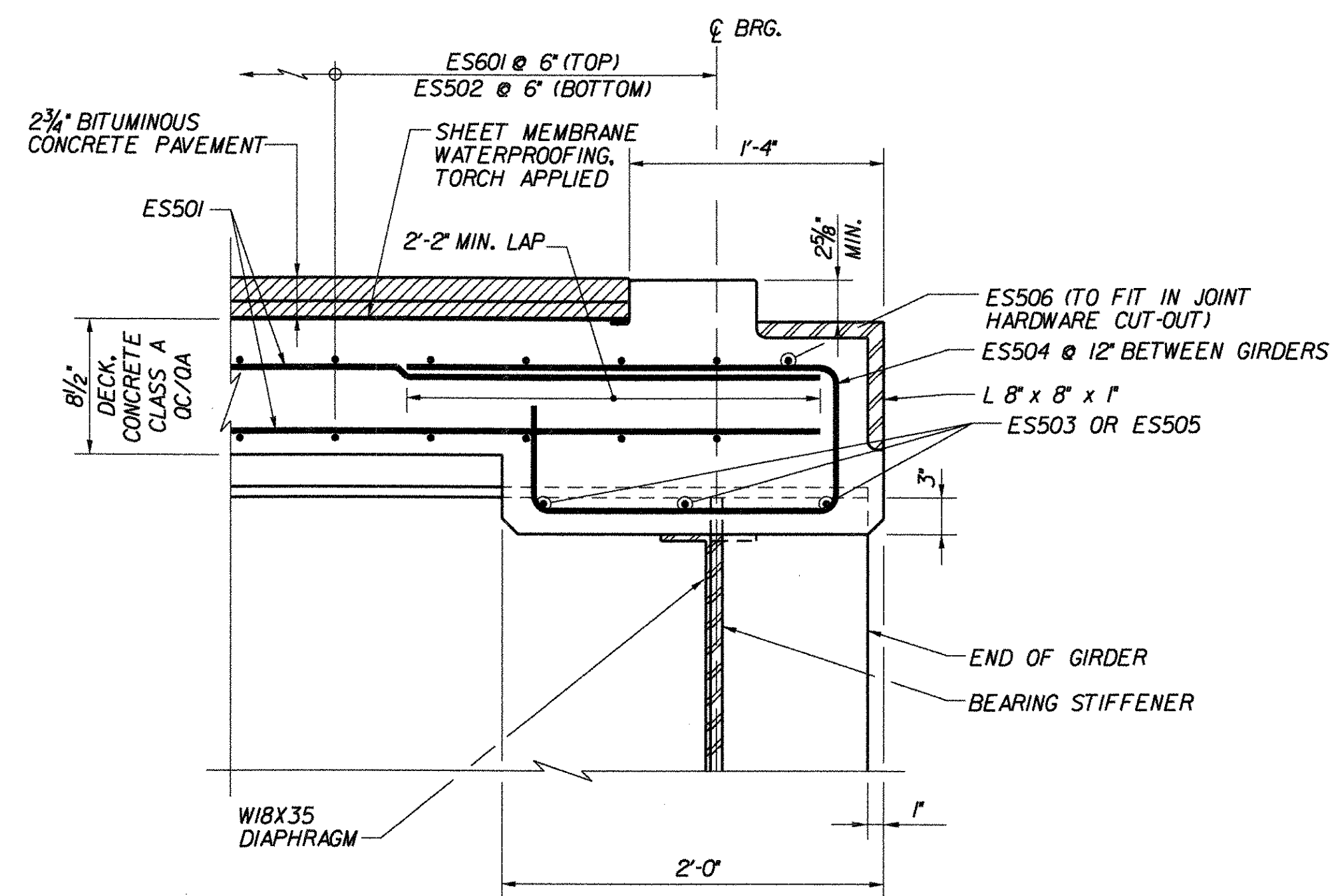
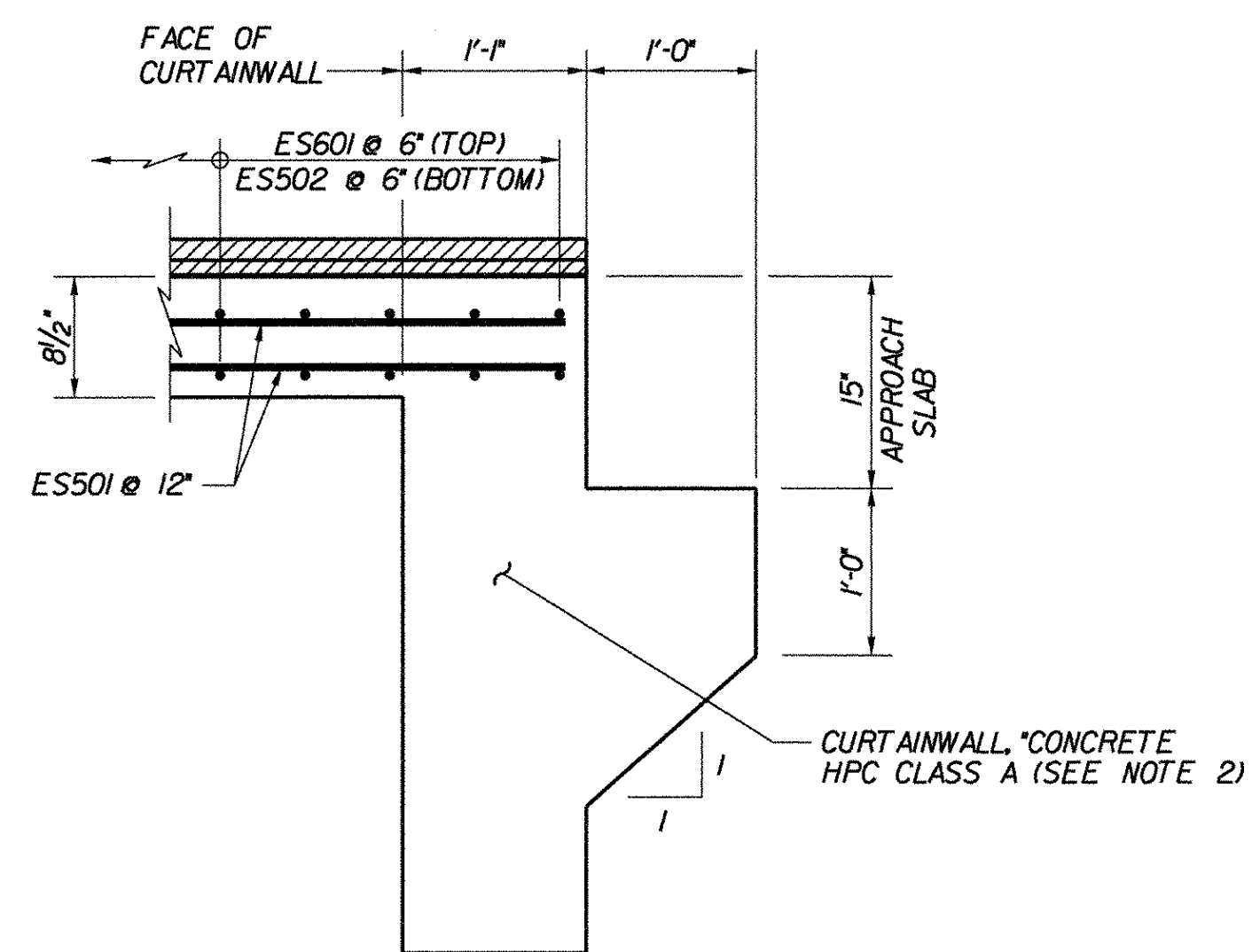


1. PAYMENT FOR DELINEATORS SHALL BE INCLUDED IN THE UNIT PRICE BID FOR ITEM #900,608 SPECIAL PROVISION (HIGH PERFORMANCE CONCRETE, LOW SHRINKAGE).
2. DELINEATORS SHALL BE EVENLY SPACED ACROSS THE ENTIRE LENGTH OF BRIDGE RAILING BUT NOT WITHIN 2' OF ANY JOINT OPENING NOR A SPACING OF MORE THAN 30'.
3. DELINEATORS SHALL BE AMBER OR WHITE WITH AMBER ON THE MEDIAN SIDE.



NOTES:

1. FOR PLATE GIRDER SIZES, SEE GIRDER ELEVATION DETAILS (3S), BRIDGE SHEET BR123.
2. FOR CURTAINWALL REINFORCEMENT AND DETAILS, SEE ABUTMENT CURTAINWALL DETAILS (3N), BRIDGE SHEET BR135, AND ABUTMENT 2 CURTAINWALL DETAILS (3S), BRIDGE SHEET BR146.
3. FOR FASCIA DETAILS, SEE TRANSVERSE SECTION (3N), BRIDGE SHEET BR114.

TYPICAL END OF DECK SLAB DETAILS

**STATE OF VERMONT
AGENCY OF TRANSPORTATION**

Town Of	GUILFORD	Bridge No.	35
Highway No.	I-91	Log Sta.	
		Surv. Sta.	
I-91 SB OVER BROAD BROOK & BROAD BROOK ROAD			
TRANSVERSE SECTION (3S)			
Designed By	M.J. MOZER	Drawn By	G.K. MORZE
Checked By	Date	Bridge Design Supervisor	
	P.W. SZUSTAK 01/03	J.P. HALSTEAD	Date 01/03
PROJECT	GUILFORD	PROJECT NO.	IM 091-(133)
		TVGA CAD Drawing No.	G TYP TRAN SEC
		Date	06/06/08
Bridge Sheet No.	BR15	Sheet	41 of 114