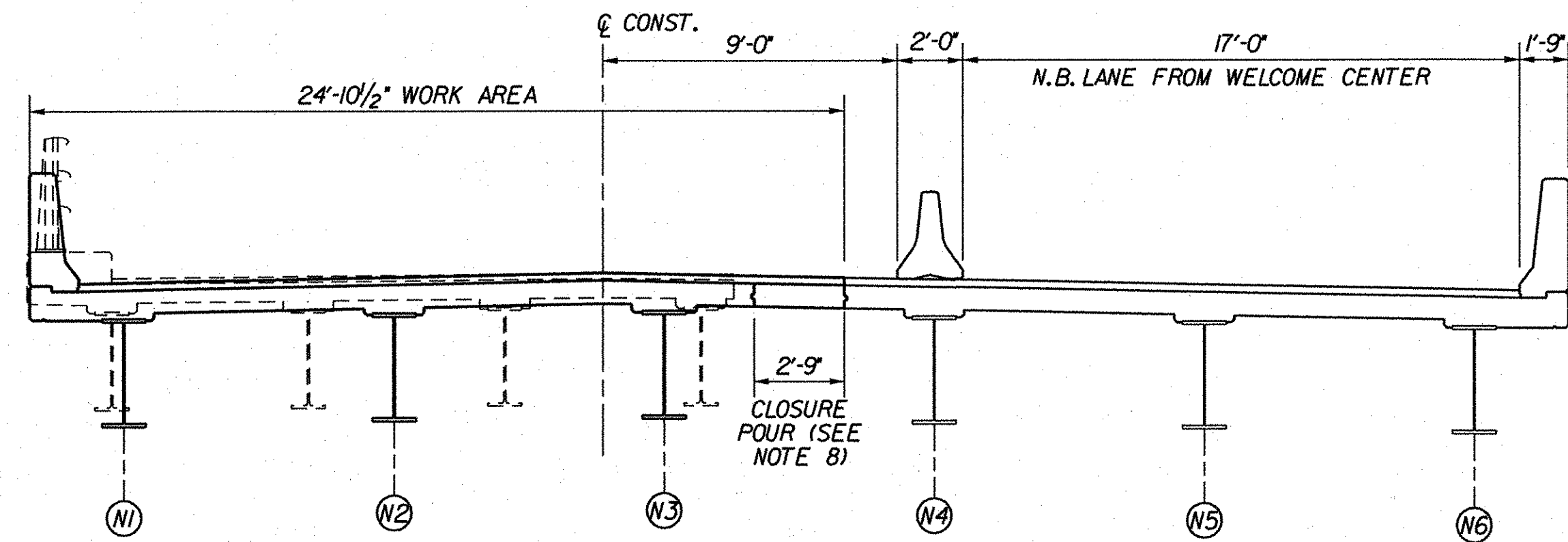


STAGE A



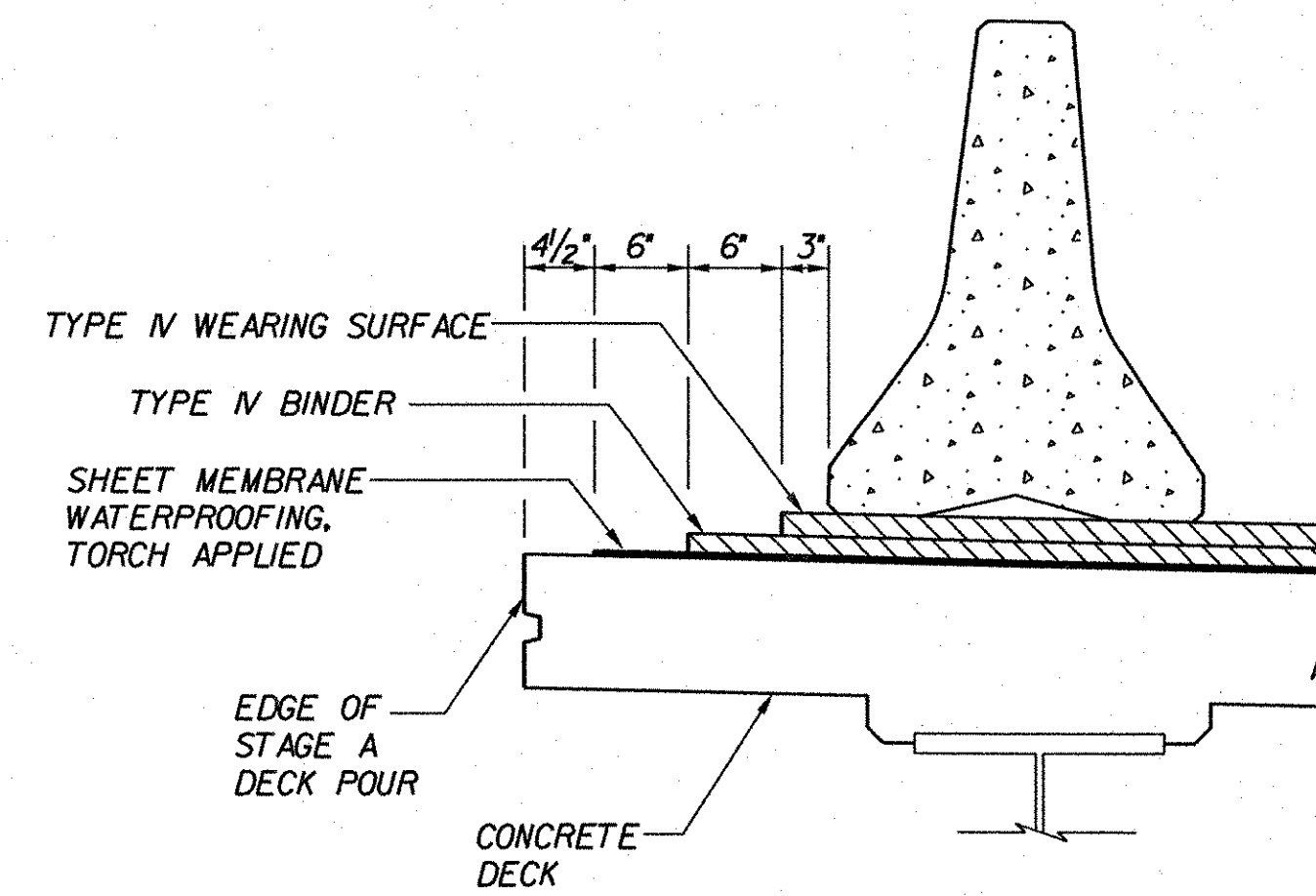
STAGE B

STAGED CONSTRUCTION SEQUENCING - PHASE I (3N)

SCALE: 1/4" = 1'-0"

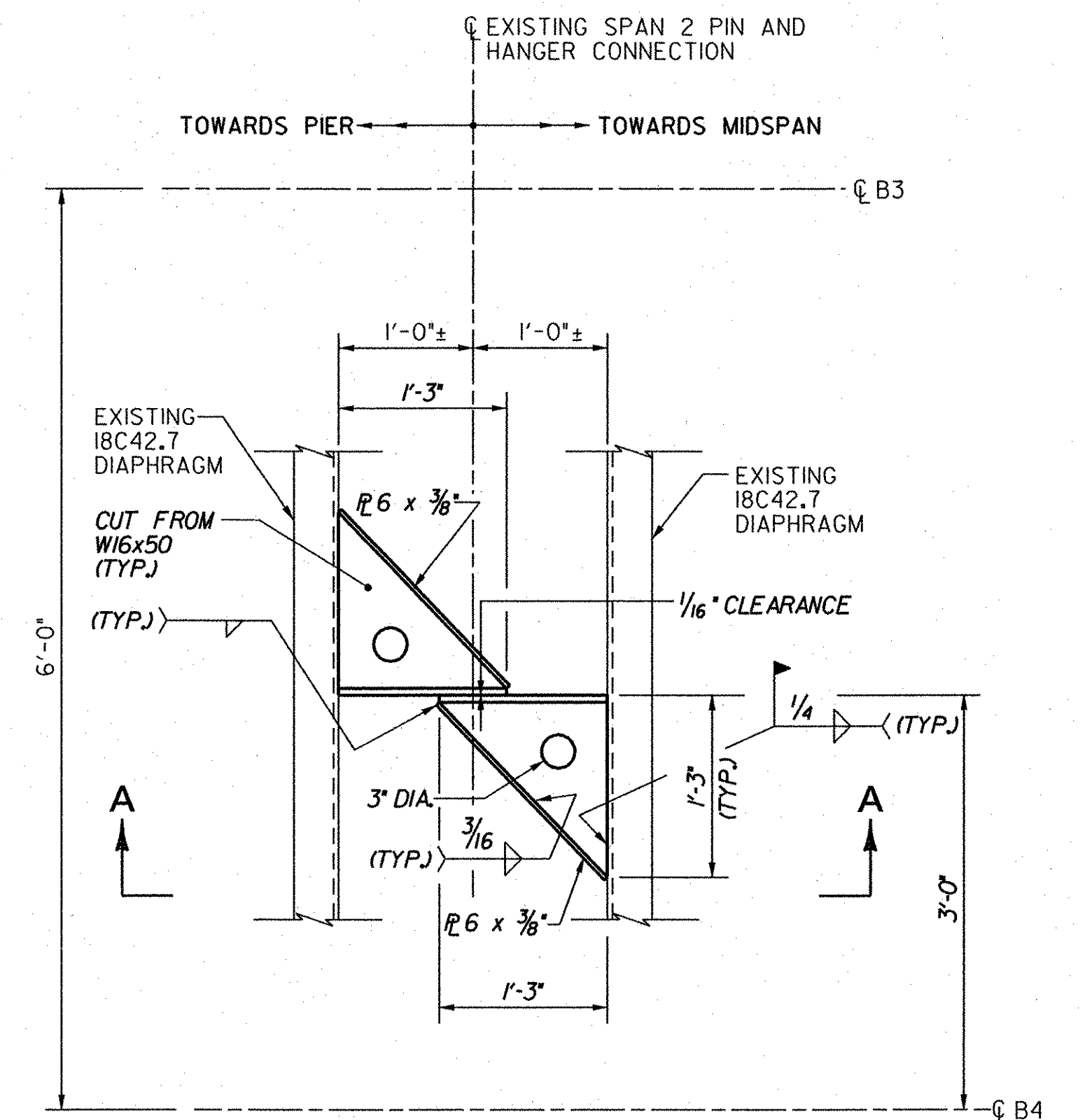
NOTES:

1. FOR PHASE 2 TEMPORARY LANE AND BARRIER LAYOUT OF BRIDGE 3N, SEE TRAFFIC CONTROL PLANS.
2. THE CONTRACTOR SHALL ERECT A CHANGEABLE MESSAGE BOARD TO POST A REDUCED SPEED LIMIT TO 25 MPH DURING DECK AND CLOSURE POURS AND FOR 48 HOURS AFTER COMPLETION OF POUR.
3. THROUGHOUT THE DURATION OF THE CLOSURE POUR, SPEED OF VEHICULAR TRAFFIC SHALL BE REDUCED TO 25 MPH.
4. INTERMEDIATE DIAPHRAGMS BETWEEN GIRDERS N3 AND N4 SHALL NOT BE INSTALLED UNTIL THE STAGE B DECK, EXCLUDING CLOSURE POUR, HAS BEEN IN PLACE FOR AT LEAST 48 HOURS, OR THEY MAY BE INSTALLED BY CONNECTING AT ONE END ONLY.
5. INSTALL DIAPHRAGMS BETWEEN GIRDERS N3 AND N4 PRIOR TO PLACING CLOSURE POUR.
6. PRIOR TO REMOVAL OF SUPERSTRUCTURE IN STAGE A, THE CONTRACTOR SHALL INSTALL TEMPORARY WIND SHOES BETWEEN EXISTING BEAMS B3 AND B4 AT BOTH EXISTING EXPANSION JOINTS IN SPAN 2. ALL COSTS ASSOCIATED WITH THIS WORK, INCLUDING MATERIALS, FABRICATION AND INSTALLATION SHALL BE INCIDENTAL TO ITEM 502.10, "SHORING SUBSTRUCTURE"
7. FOR FURTHER DETAILS OF EXISTING WIND SHOES, SEE I-001-16) REFERENCE PLANS.
8. FOR CLOSURE POUR DETAILS, SEE TRANSVERSE SECTION (3N), BRIDGE SHEET BR114.



PAVEMENT STAGING DETAIL

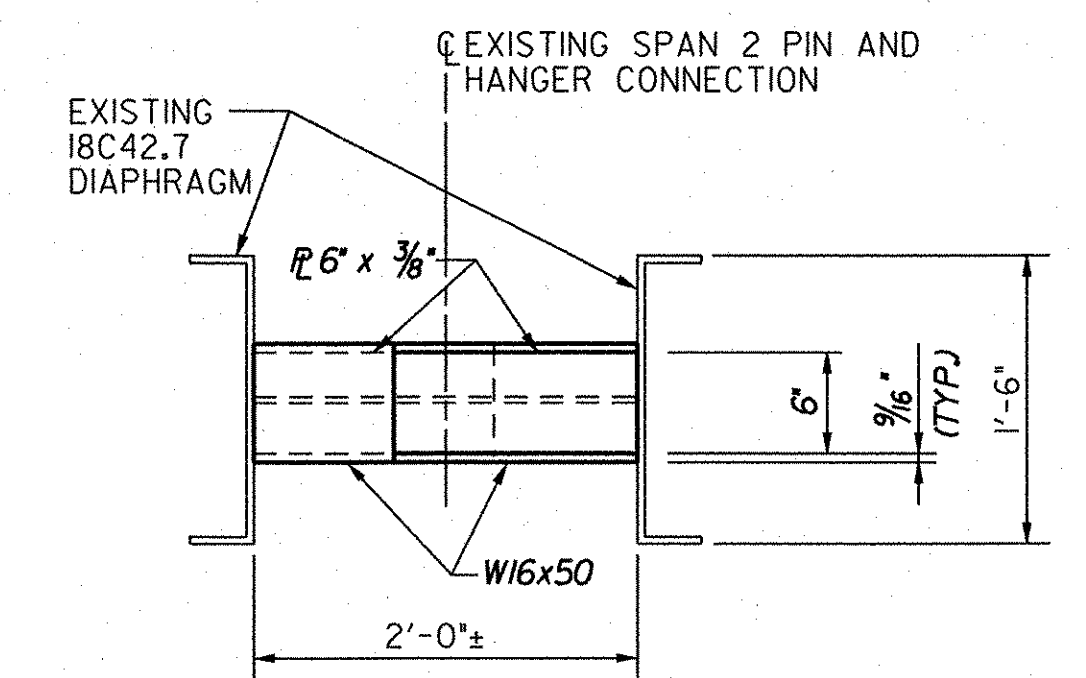
SCALE: 1" = 1'-0"



TEMPORARY WIND SHOE - PLAN

SCALE: 1" = 1'-0"

NOTE: WIND SHOE DETAIL ADJACENT TO PIER 1 SHOWN. DETAIL ADJACENT TO PIER 2 IS SIMILAR, BUT OPPOSITE HAND. (SEE NOTE 7)



SECTION A-A

SCALE: 1" = 1'-0"

**STATE OF VERMONT
AGENCY OF TRANSPORTATION**

Town Of	GUILFORD	Bridge No.	3N
Highway No.	I-91	Log Sta.	
		Surv. Sta.	
I-91NB OVER BROAD BROOK & BROAD BROOK ROAD			
STAGED CONSTRUCTION DETAILS (1 OF 2) (3N)			
Designed By	M.J. MOZER	Drawn By	G.K. MORZE
Checked By	Date	Bridge Design Supervisor	
	P.W. SZUSTAK		J.P. HALSTEAD
	01/03		Date 01/03
PROJECT	GUILFORD	PROJECT NO.	IM 091-1(33)
		TVGA CAD Drawing No.	G BR STAGES
		Date	04/28/08
		Bridge Sheet No.	BR112
		Sheet	38 of 114