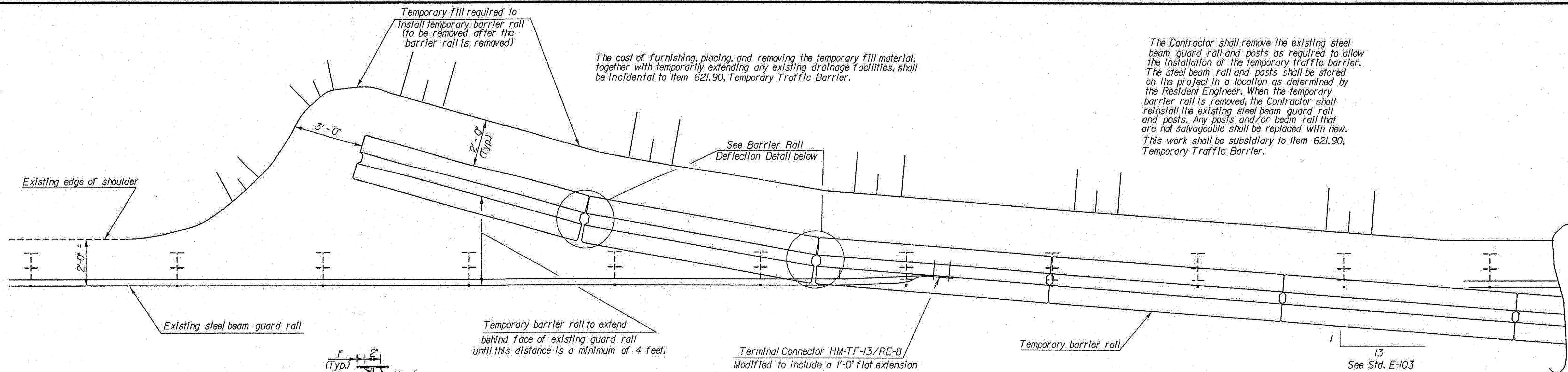


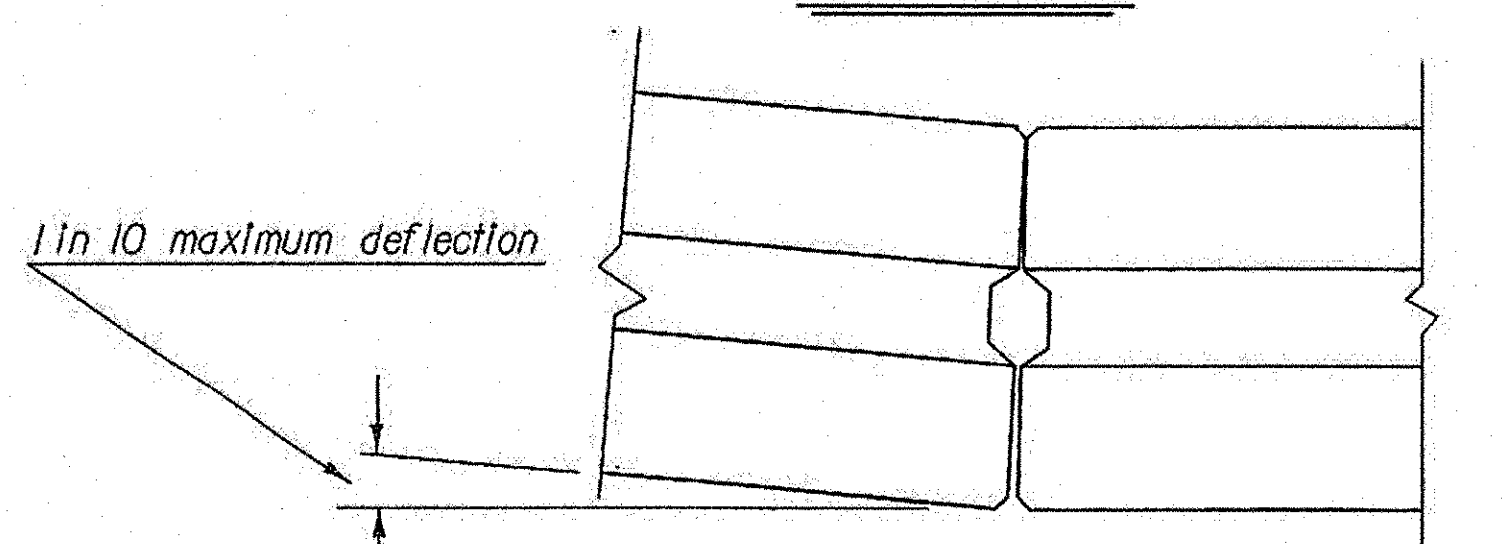
The cost of furnishing, placing, and removing the temporary fill material, together with temporarily extending any existing drainage facilities, shall be incidental to Item 621.90, Temporary Traffic Barrier.

The Contractor shall remove the existing steel beam guard rail and posts as required to allow the installation of the temporary traffic barrier. The steel beam rail and posts shall be stored on the project in a location as determined by the Resident Engineer. When the temporary barrier rails are removed, the Contractor shall reinstall the existing steel beam guard rail and posts. Any posts and/or beam rail that are not salvageable shall be replaced with new. This work shall be subsidiary to Item 621.90, Temporary Traffic Barrier.



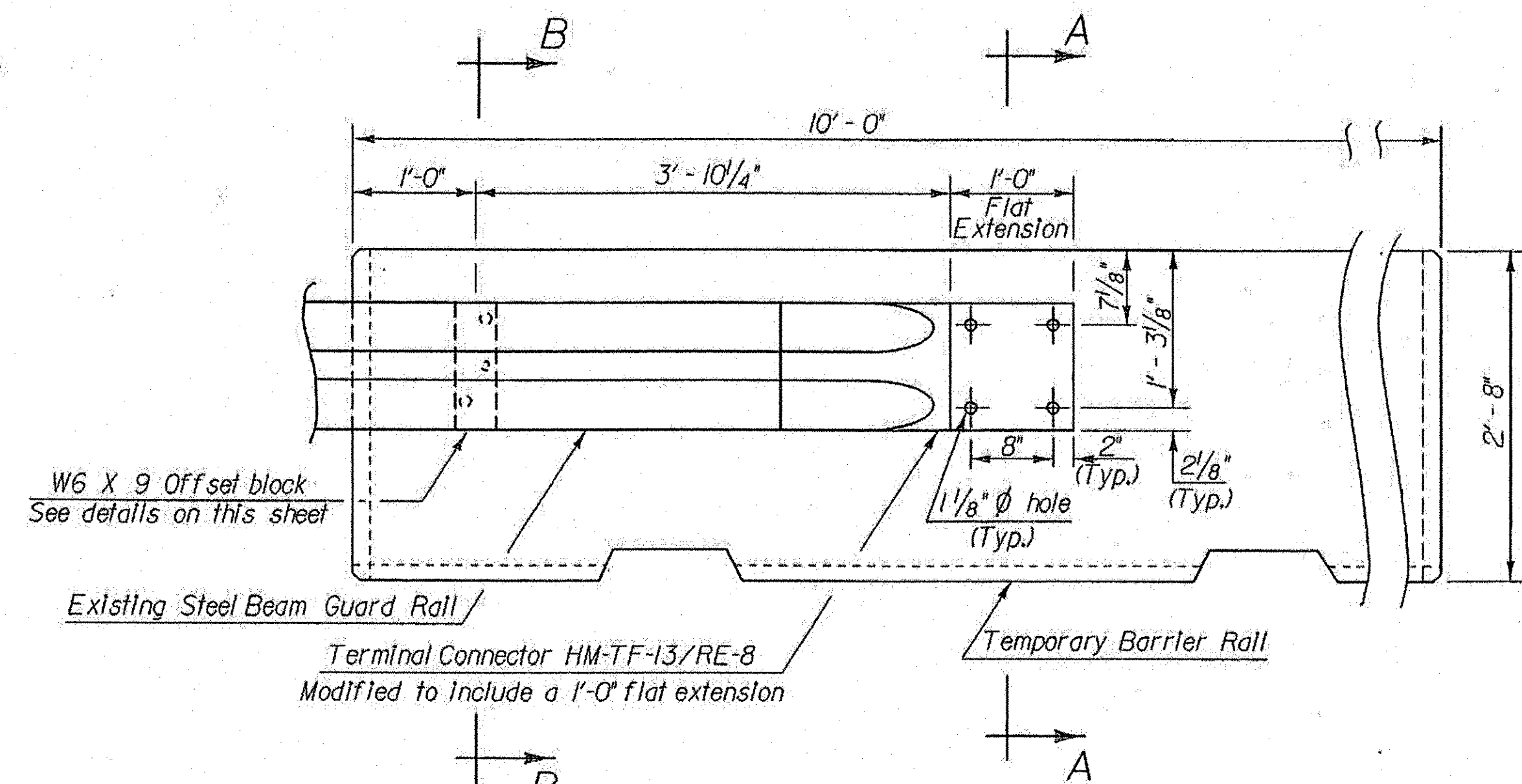
PLAN VIEW SHOWING POSITIVE CONNECTION BETWEEN TEMPORARY BARRIER RAIL AND EXISTING GUARD RAIL

1/2" = 1'-0"



BARRIER RAIL DEFLECTION DETAIL

NTS



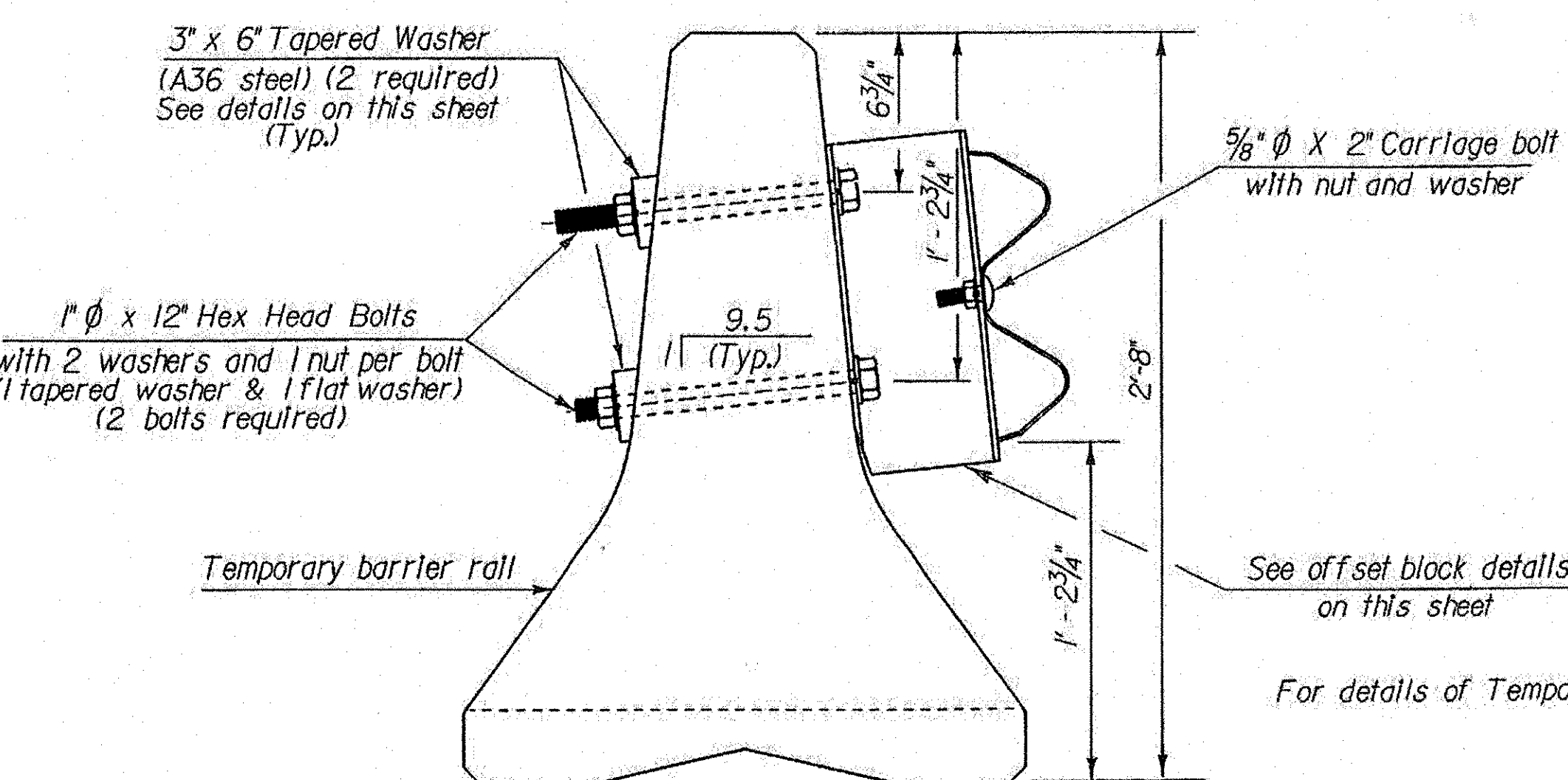
ELEVATION VIEW SHOWING POSITIVE CONNECTION BETWEEN TEMPORARY BARRIER RAIL AND EXISTING GUARD RAIL

1" = 1'-0"



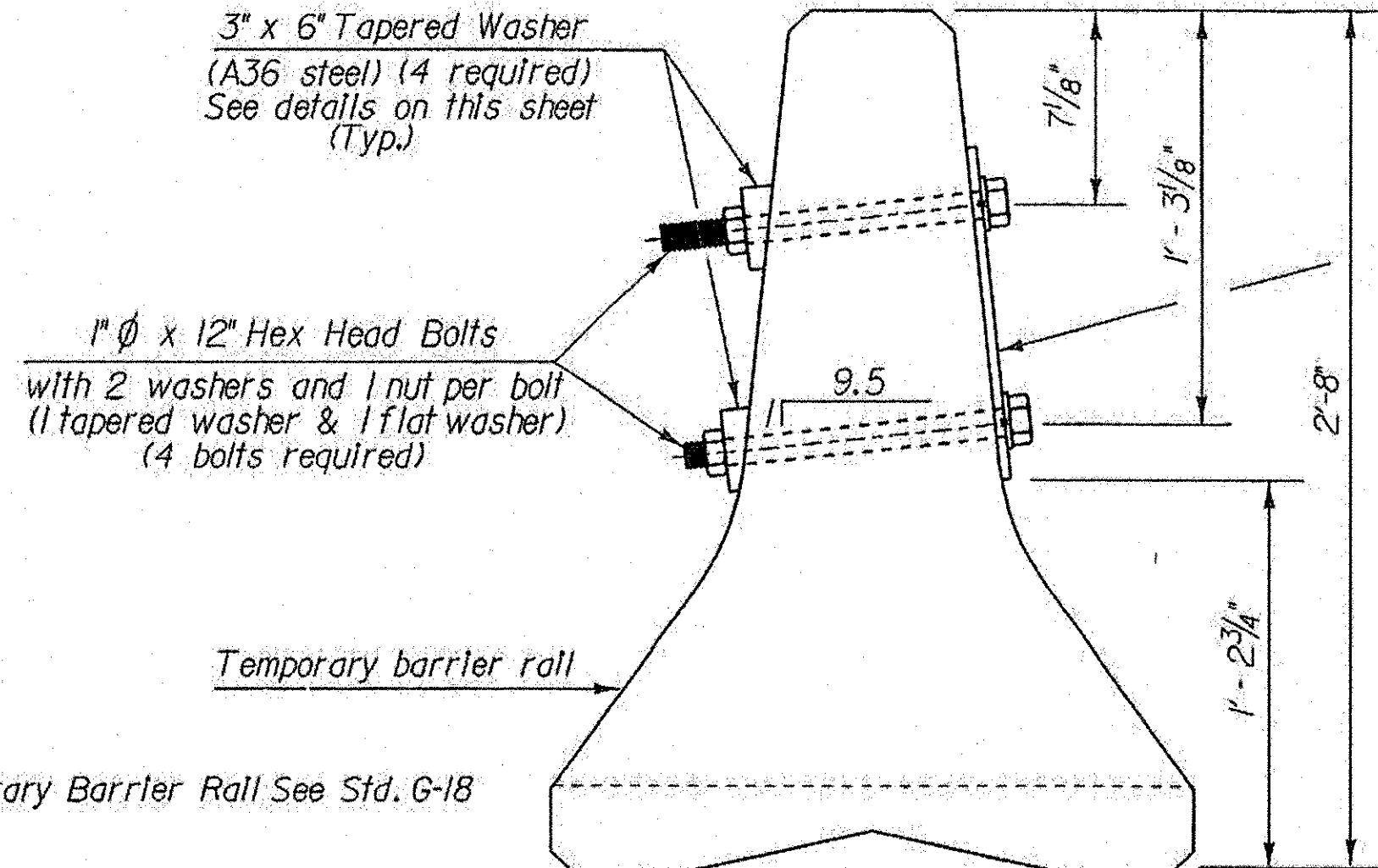
OFFSET BLOCK DETAILS

1" = 6"



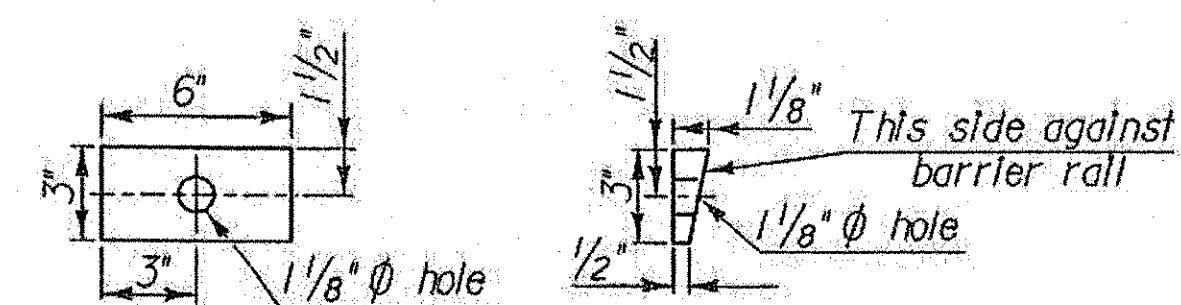
SECTION B-B

1" = 6"



SECTION A-A

1" = 6"



TAPERED WASHER DETAILS

1" = 6"

STATE OF VERMONT
AGENCY OF TRANSPORTATION

Town Of GUILFORD Bridge No. 3N&S
Highway No. I-91 Log Sta. Surv. Sta.

POSITIVE CONNECTION DETAILS BETWEEN BARRIER RAIL AND EXISTING GUARD RAIL (H.D.S. BEAM)

Designed By VTRANS Drawn By VTRANS
Checked By Date Bridge Design Supervisor
VTRANS Date VTRANS Date 01/03

PROJECT GUILFORD PROJECT NO. IM 091-(33)

TVGA CAD Drawing No. g-rail-conn.dgn Date 04/27/08
Bridge Sheet No. Sheet 22 of 114