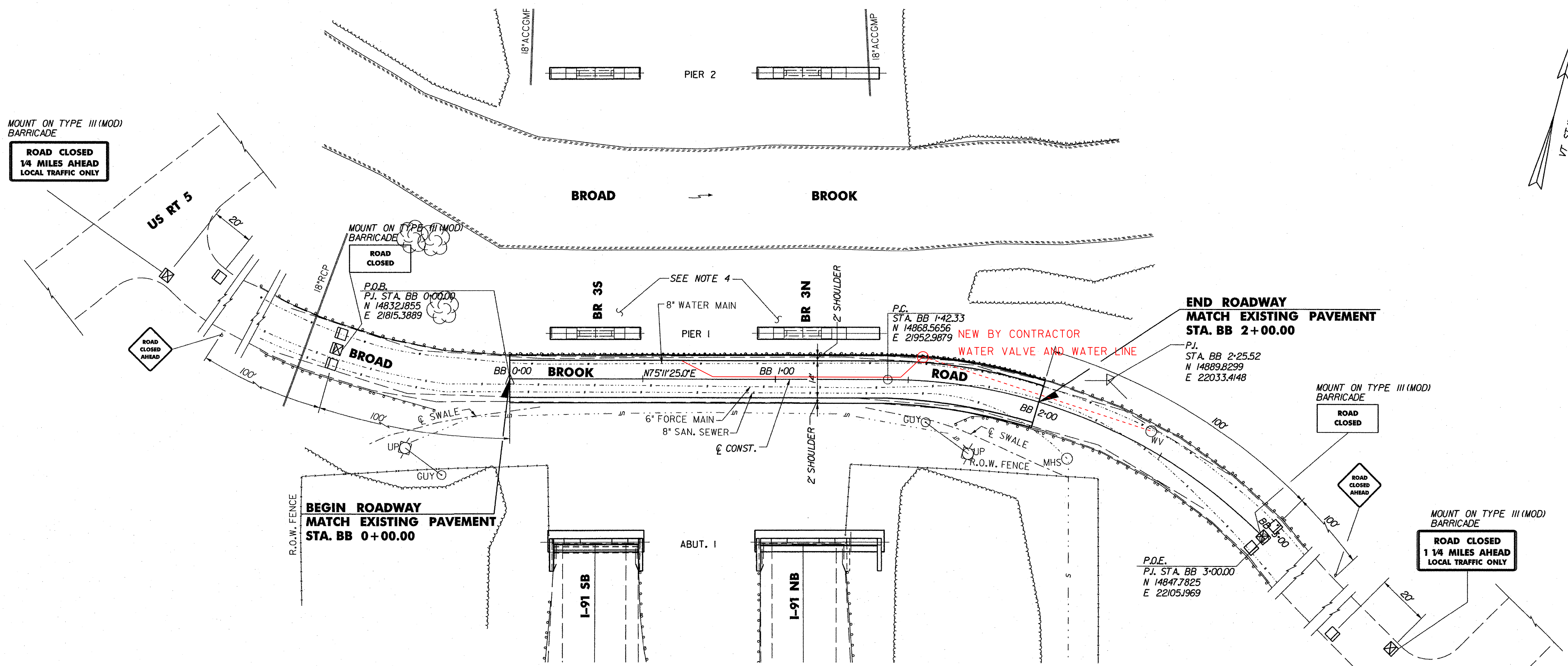
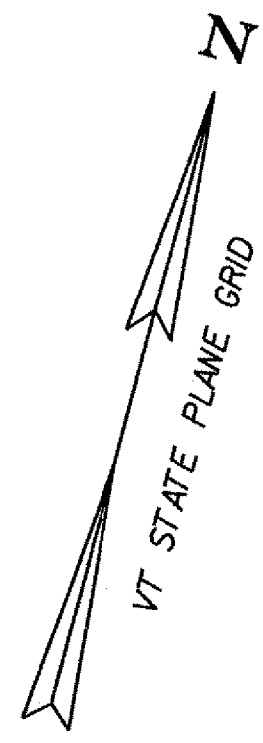


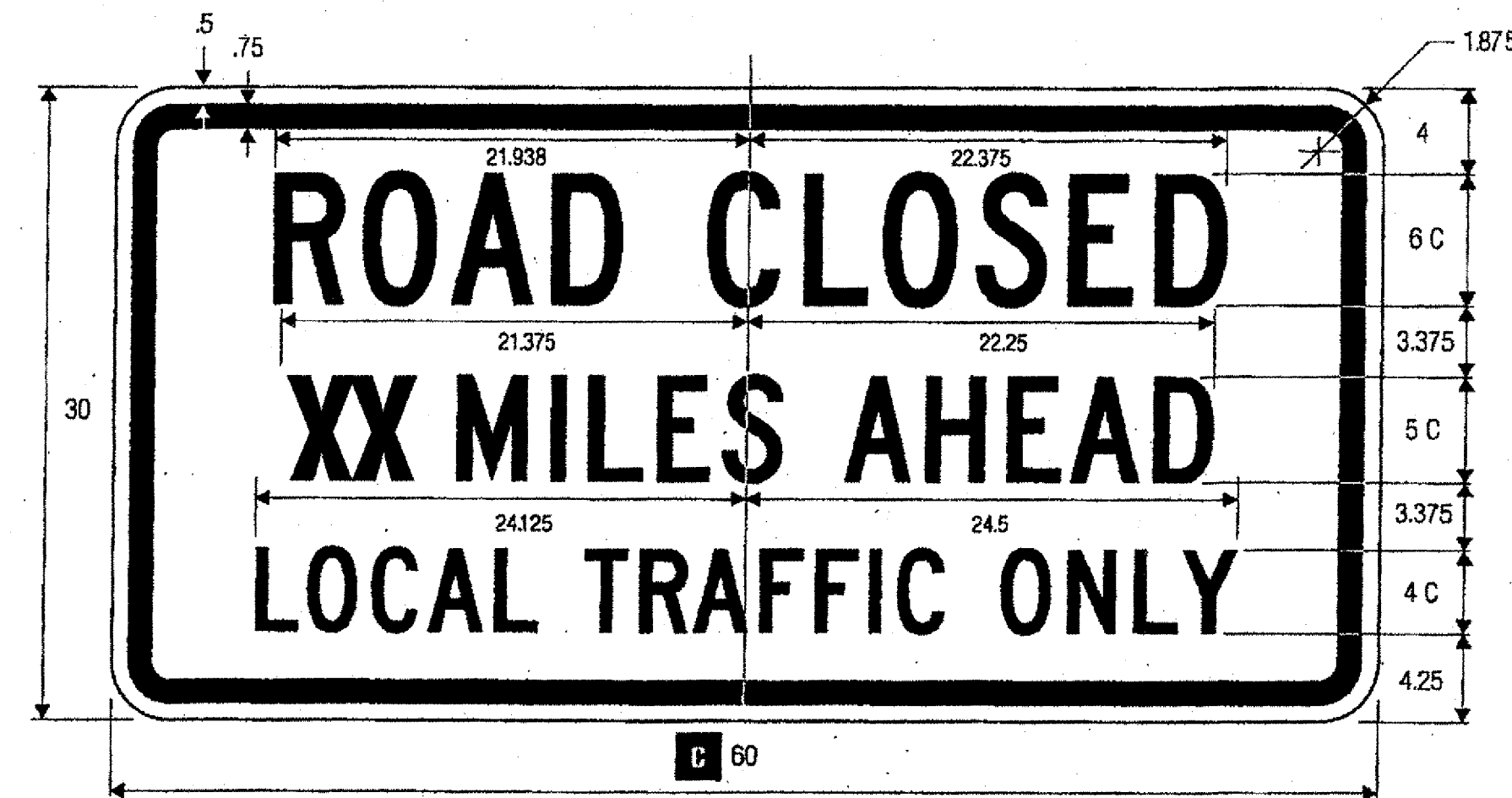
ITEM 621.21 HEAVY DUTY STEEL BEAM GUARD RAIL, GALVANIZED  
STA. BB 0+00 TO STA. BB 2+00, 9' LT.

ITEM 621.80 REMOVAL AND DISPOSAL OF GUARD RAIL  
STA. BB 0+00 TO STA. BB 2+00, 9' LT.



**PLAN**

CONST. BB CURVE DATA:  
 Delta = 70°34'57.2"  
 Dc = 28°38'52.4"  
 R = 200.00'  
 T = 141.56'  
 L = 246.38'  
 E = 45.03'



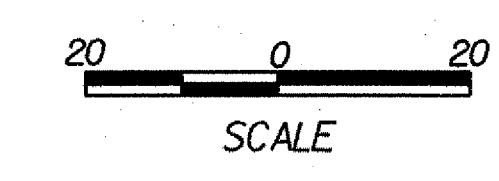
R11-3a  
ROAD CLOSED - LOCAL TRAFFIC ONLY

**NOTES:**

- SEE ROADWAY PLANS, SHEETS 6 AND 7, AND ROADWAY TYPICAL SECTIONS, SHEET 5, FOR INFORMATION ON I-91 IMPROVEMENTS.
- TEMPORARY ROAD CLOSURE FOR BROAD BROOK ROAD TO BE IMPLEMENTED ONLY IN FALL 2008.
- PAYMENT FOR ALL CONSTRUCTION SIGNS AND TRAFFIC CONTROL DEVICES FOR BROAD BROOK ROAD SHALL BE PAID UNDER THE ITEM 641.10, 'TRAFFIC CONTROL.'
- FOR BRIDGE REHABILITATION WORK IN THE VICINITY OF BROAD BROOK ROAD, SEE BRIDGE PLANS.

**LEGEND**

- TYPE III BARRICADE
- TYPE III (MOD) BARRICADE



**STATE OF VERMONT  
AGENCY OF TRANSPORTATION**

Town Of	GUILFORD	Bridge No.	<b>3N&amp;S</b>
Highway No.	I-91	Log Sta.	
		Surv. Sta.	
I-91 OVER BROAD BROOK & BROAD BROOK ROAD			
<b>BROAD BROOK ROAD PLAN</b>			
Designed By	T.C. GAWENUS	Drawn By	R.A. BOTZENHART
Checked By	P.W. SZUSTAK	Bridge Design Supervisor	J.P. HALSTEAD
Date	01/03	Date	01/03
PROJECT	GUILFORD	PROJECT NO.	IM 091-1(33)
TVGA CAD Drawing No.	BB-1.dgn	Date	05/22/08
Bridge Sheet No.		Sheet	8 of 14

**TVGA** TVGA ENGINEERING,  
SURVEYING, P. C.