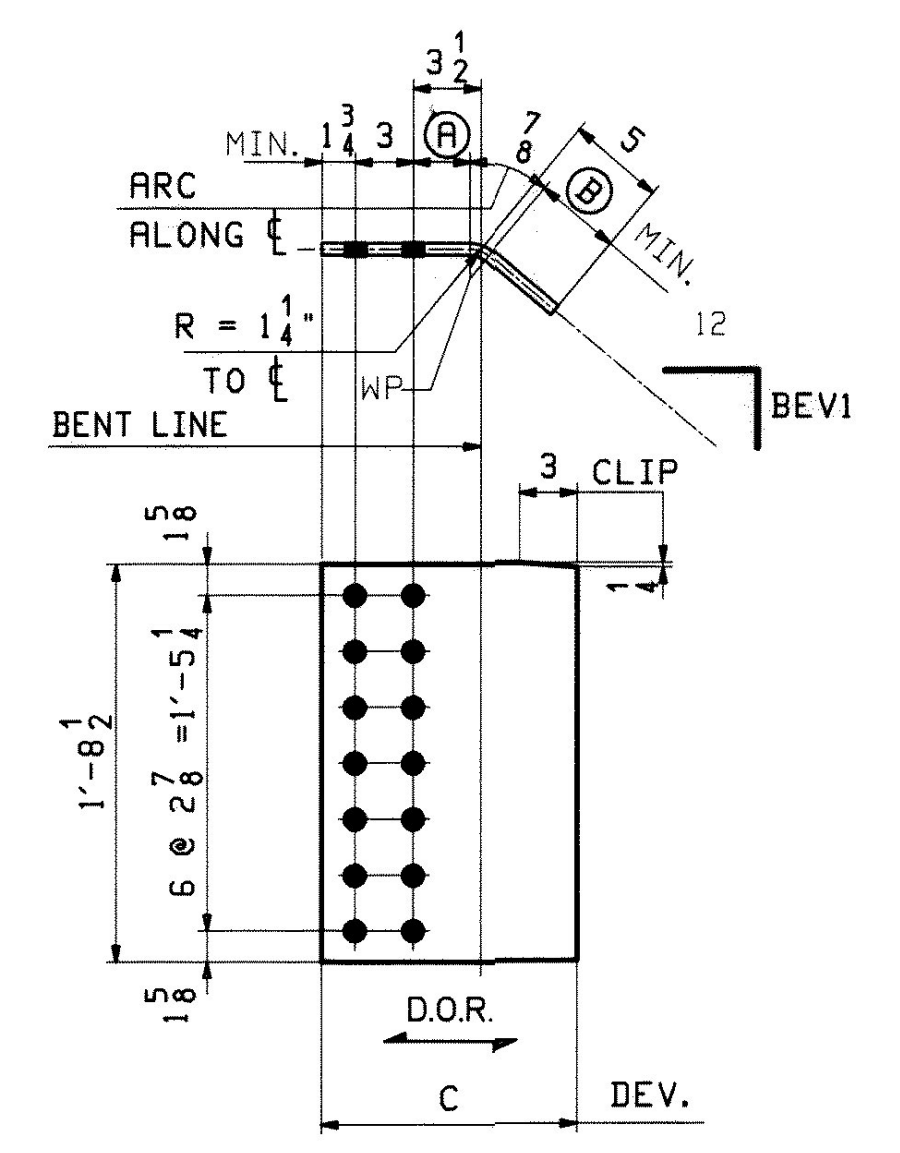


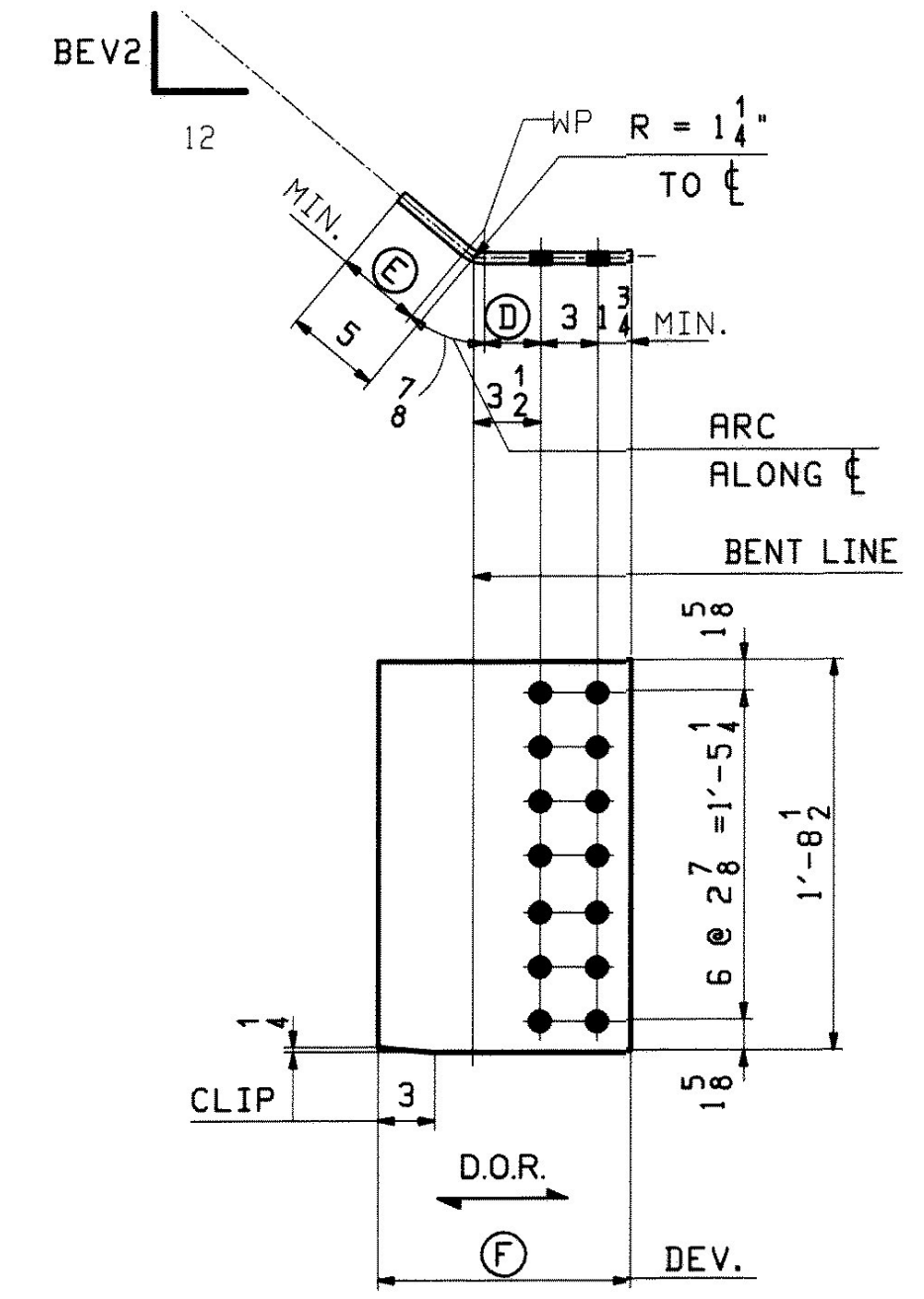
ABUT. 1 END DIAPHRAGMS

MARK	QTY.	ⓑ	ⓓ	ⓔ	ⓕ	ⓖ	ⓗ	ⓙ	ⓚ	ⓛ	ⓜ	ⓝ	
LINE 5-4	21D1	1	10 1/8	10 3/8	7	7'-9 1/16	7'-6 1/16	7'-8 1/8	13/16	7'-6 5/16	a21	f21	m21
LINE 4-3	21D2	1	10 1/4	10 3/8	7 1/8	7'-9 9/16	7'-6 9/16	7'-8 11/16	7/8	7'-6 13/16	b21	g21	n21
LINE 3-2	21D3	1	10 3/8	10 1/2	7	7'-10 1/16	7'-7 1/16	7'-9 1/8	13/16	7'-7 5/16	c21	h21	p21
LINE 2-1	21D4	1	10 1/2	10 5/8	7 1/8	7'-10 5/8	7'-7 5/8	7'-9 3/4	13/16	7'-7 7/8	d21	k21	s21



BENT PL'S

MARK	QTY.	BEV1	Ⓐ	Ⓑ	Ⓒ
f21	1	10 1/8	3 1/16	4 9/16	1'-1 1/4
g21	1	10 1/4	3 1/16	4 9/16	1'-1 1/4
h21	1	10 3/8	3 1/16	4 9/16	1'-1 1/4
k21	1	10 1/2	3	4 1/2	1'-1 1/8



BENT PL'S

MARK	QTY.	BEV2	Ⓓ	Ⓔ	Ⓕ
m21	1	10 3/8	3 1/16	4 9/16	1'-1 1/4
n21	1	10 3/8	3 1/16	4 9/16	1'-1 1/4
p21	1	10 1/2	3	4 1/2	1'-1 1/8
s21	1	10 5/8	3	4 1/2	1'-1 1/8

ABM INFO		SHIP	BILL OF MATERIAL				JOB NO.	DRAWING NO.	REV.
							438	21	
PAGE	LINE	MARK	QTY	MARK	MATERIAL	LENGTH FT INCHES	REMARKS	WT	PROCUREMENT NOTES
		21D1	1		END DIAPHRAGM			499	
7	C	a21	1		W=24x55	7 8 11/16	M270-50HT2		
7	J	f21	1		PL 1/2x20 1/2	1 1 1/4	(BENT) M270-50HT2		
7	J	m21	1		PL 1/2x20 1/2	1 1 1/4	(BENT) M270-50HT2		
		21D2	1		END DIAPHRAGM			502	
7	C	b21	1		W=24x55	7 8 11/16	M270-50HT2		
7	J	g21	1		PL 1/2x20 1/2	1 1 1/4	(BENT) M270-50HT2		
7	J	n21	1		PL 1/2x20 1/2	1 1 1/4	(BENT) M270-50HT2		
		21D3	1		END DIAPHRAGM			503	
7	C	c21	1		W=24x55	7 8 11/16	M270-50HT2		
7	J	h21	1		PL 1/2x20 1/2	1 1 1/4	(BENT) M270-50HT2		
7	J	p21	1		PL 1/2x20 1/2	1 1 1/4	(BENT) M270-50HT2		
		21D4	1		END DIAPHRAGM			506	
7	C	d21	1		W=24x55	7 8 11/16	M270-50HT2		
7	J	k21	1		PL 1/2x20 1/2	1 1 1/4	(BENT) M270-50HT2		
7	J	s21	1		PL 1/2x20 1/2	1 1 1/4	(BENT) M270-50HT2		

DATE: 2/9/10
 DRAWN: [Signature]
 CHECKED: [Signature]

REV.	DATE	REMARKS	DWN	CHK	APVL	SHOP
0						
MATERIAL: M270-50W (UN)		SURFACE PREP. & PAINT: SEE GNI		HOLES: 15 1/16 Ø		SHOP BOLTS: NONE
DESCRIPTION: ABUT1 DIAPHRAGMS						
CASCO BAY STEEL STRUCTURES, INC. 75 SPRING HILL ROAD SACO, MAINE 04072 PHONE (207) 282-7360 FAX. (207) 282-1179						
STRUCTURE: U.S. 5 over I-91 Bridge No. 19A Putney County of Windham			DRAWN: TS		DATE: 01/06	
LOCATION: Putney			CHKD: DO		DATE: 01/19	
PROJ NO. IM 091-1(31)			JOB NO. 438		DWG NO. 21	
CUSTOMER: VT ROT					REV. [Signature]	