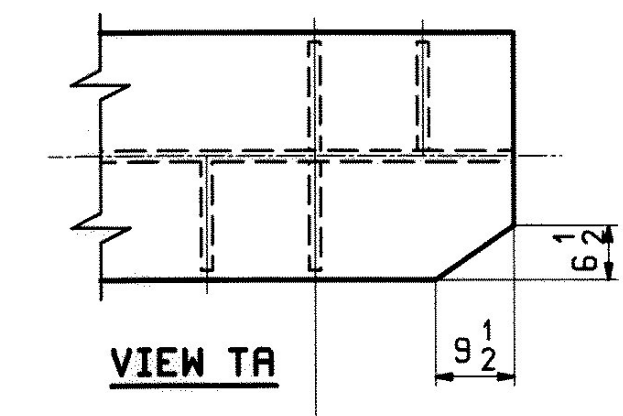
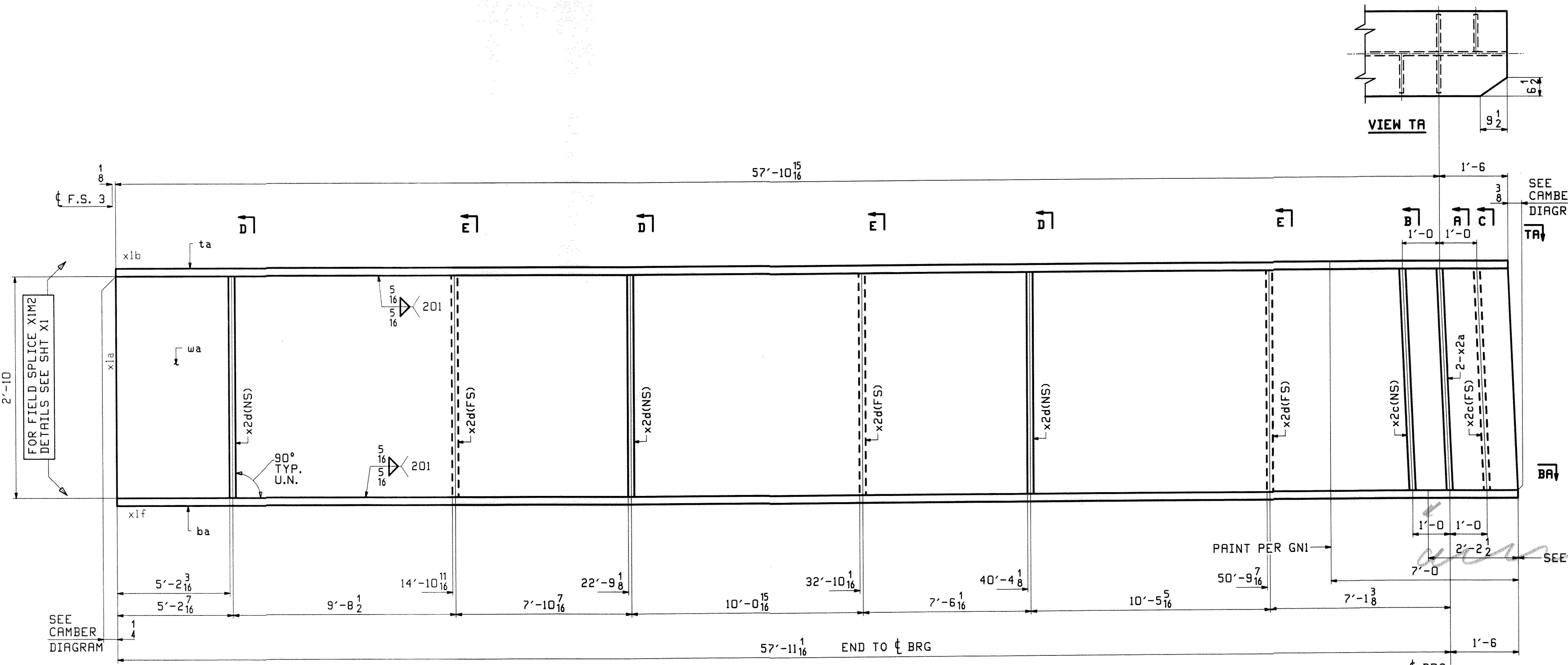


| ABM INFO | | BILL OF MATERIAL | | | | JOB NO. | DRAWING NO. | REV. | |
|----------|------|------------------|-----|------|------------------------------------|-----------------------|-------------|-------|-------------------|
| PAGE | LINE | MARK | QTY | MARK | MATERIAL | LENGTH | REMARKS | WT | PROCUREMENT NOTES |
| | | | | | | FT | | | |
| | | 19G4D | 1 | | GIRDER | | | 11945 | |
| 4 | Q | | 1 | wa | PL- $\frac{1}{2}$ x34 | 59'-5 $\frac{5}{8}$ " | M270-50WT2 | | |
| 2 | U | | 1 | ta | PL-1x16 | 59'-4 $\frac{3}{8}$ " | M270-50WT2 | | |
| 1 | G | | 1 | ba | PL- $\frac{1}{2}$ x16 | 59'-5 $\frac{5}{8}$ " | M270-50WT2 | | |
| 6 | K | | 2 | x2a | PL- $\frac{7}{8}$ x7 $\frac{3}{4}$ | 2'-10" | MIE | | |
| 6 | L | | 2 | x2c | PL- $\frac{1}{2}$ x7 $\frac{3}{4}$ | 2'-10" | | | |
| 6 | L | | 6 | x2d | PL- $\frac{1}{2}$ x7 $\frac{3}{4}$ | 2'-10" | | | |

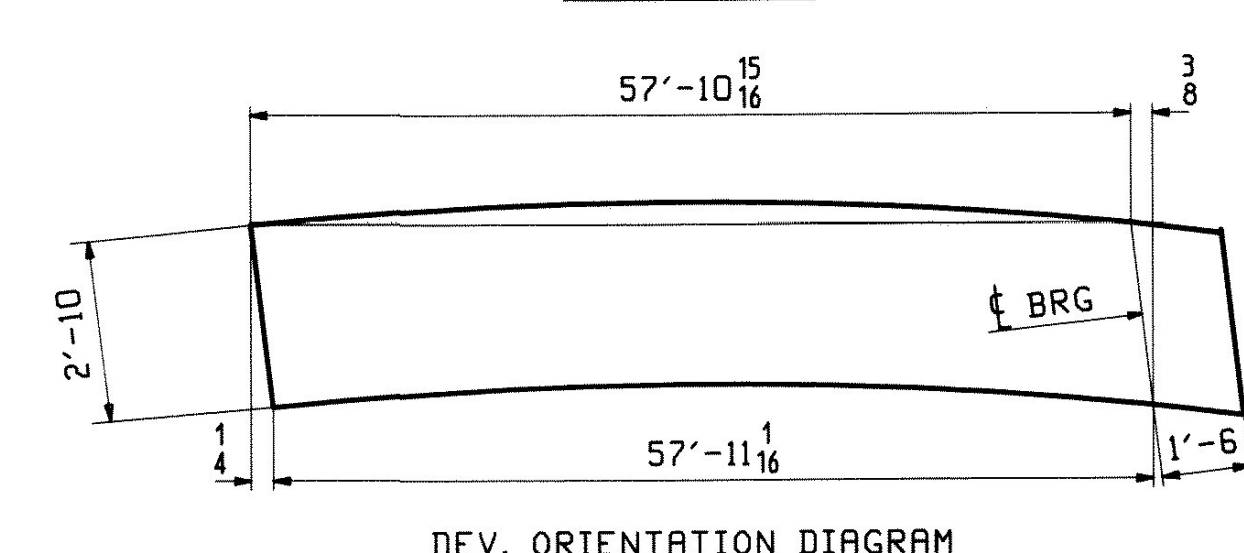
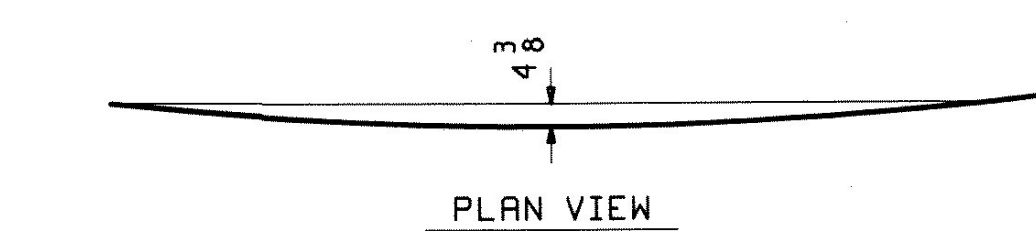


SEE CAMBER DIAGRAM TA

NOTE A:
NO PAINT BOTTOM AND EDGES OF BOTTOM FLANGE.

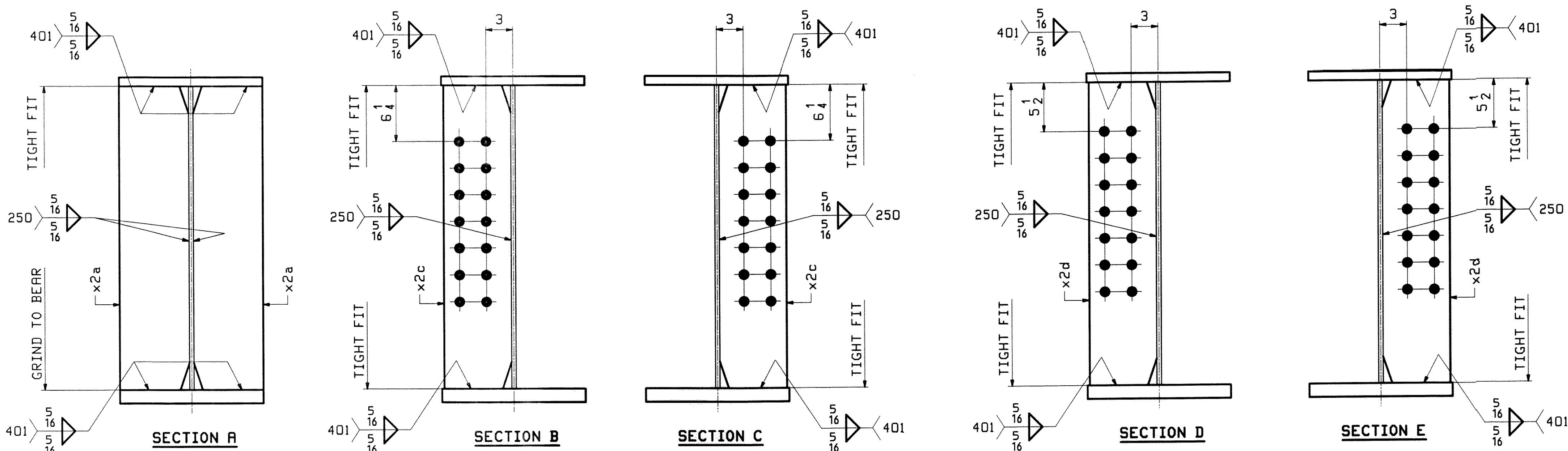
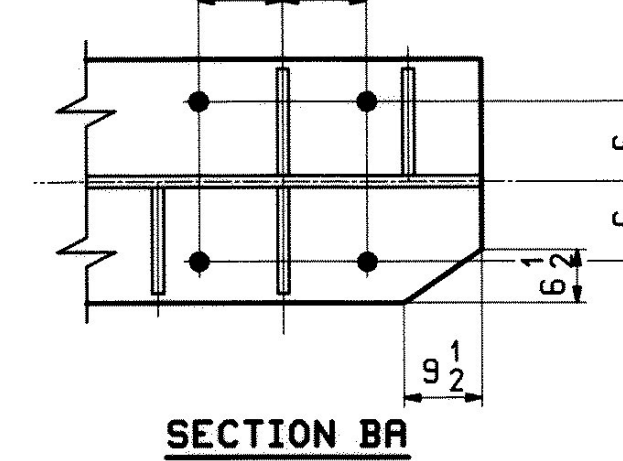
PRINT PER GNI

SEE NOTE A



ONE - GIRDER - 19G4D (DEV)

FOR FIELD SPLICE & STANDARD DETAILS SEE X SHEETS
FOR CAMBER DIAGRAM SEE SHEET C2
FOR FLANGE DIAGRAM SEE SHEET F1
FOR GENERAL NOTES SEE SHEET GNI



DATE: 2/1/10
SIGNATURE: [Signature]
REVIEW BY: [Signature]

| REV. | DATE | REMARKS | DWN | CHK | APVL | SHOP |
|---|------|------------------------|---------|------------------|------|-------------|
| 0 | | | | | | |
| MATERIAL: | | SURFACE PREP. & PAINT: | | HOLES: | | SHOP BOLTS: |
| M270-50W (UN) | | SEE GNI | | 15/16" Ø U.N. | | NONE |
| DESCRIPTION: GIRDER - 19G4D | | | | | | |
| CASCO BAY STEEL STRUCTURES, INC. 75 SPRING HILL ROAD SACO, MAINE 04072 PHONE (207) 282-7360 FAX. (207) 282-1179 | | | | | | |
| STRUCTURE: U.S. 5 over I-91 Bridge No. 19A Putney County of Windham | | | DRAWN: | DATE: | | |
| | | | WJF | 01/12 | | |
| | | | CHKD: | DATE: | | |
| | | | DO | 01/14 | | |
| LOCATION: Putney | | | JOB NO. | DWG NO. | | |
| PROJ. NO. IM 091-1(31) | | | 438 | 19 | | |
| CUSTOMER: VT AOT | | | | REV. [Signature] | | |