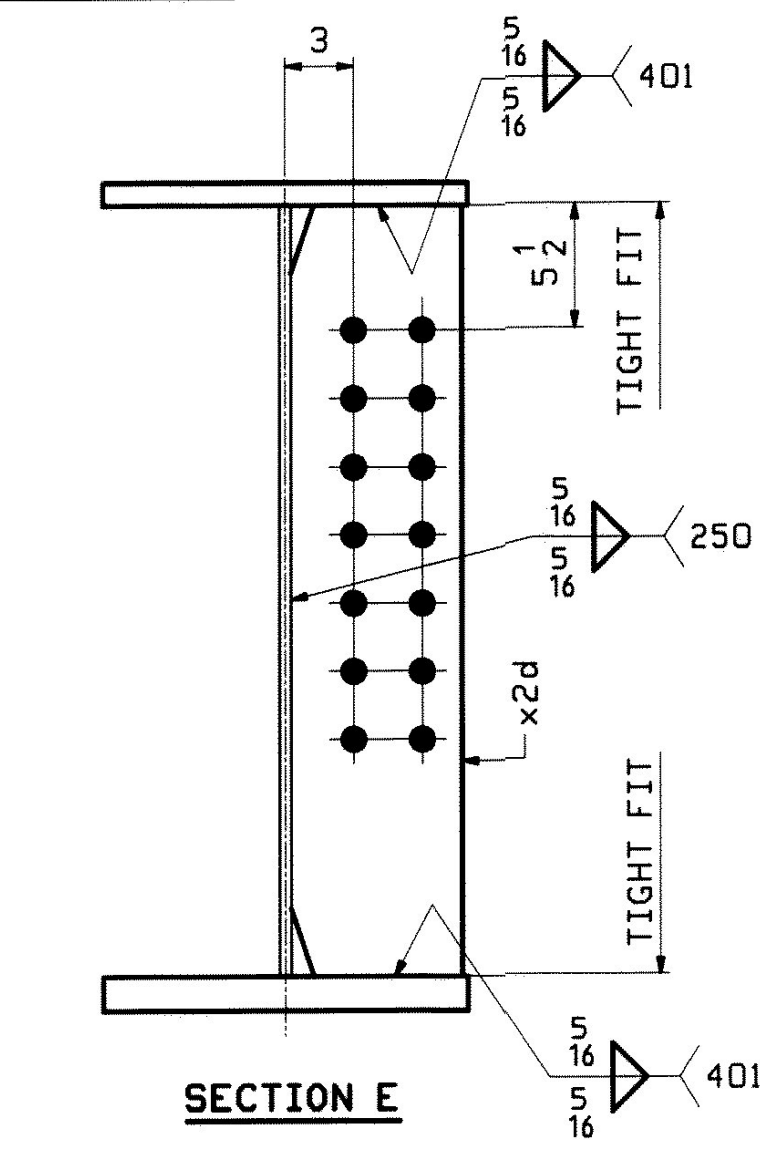
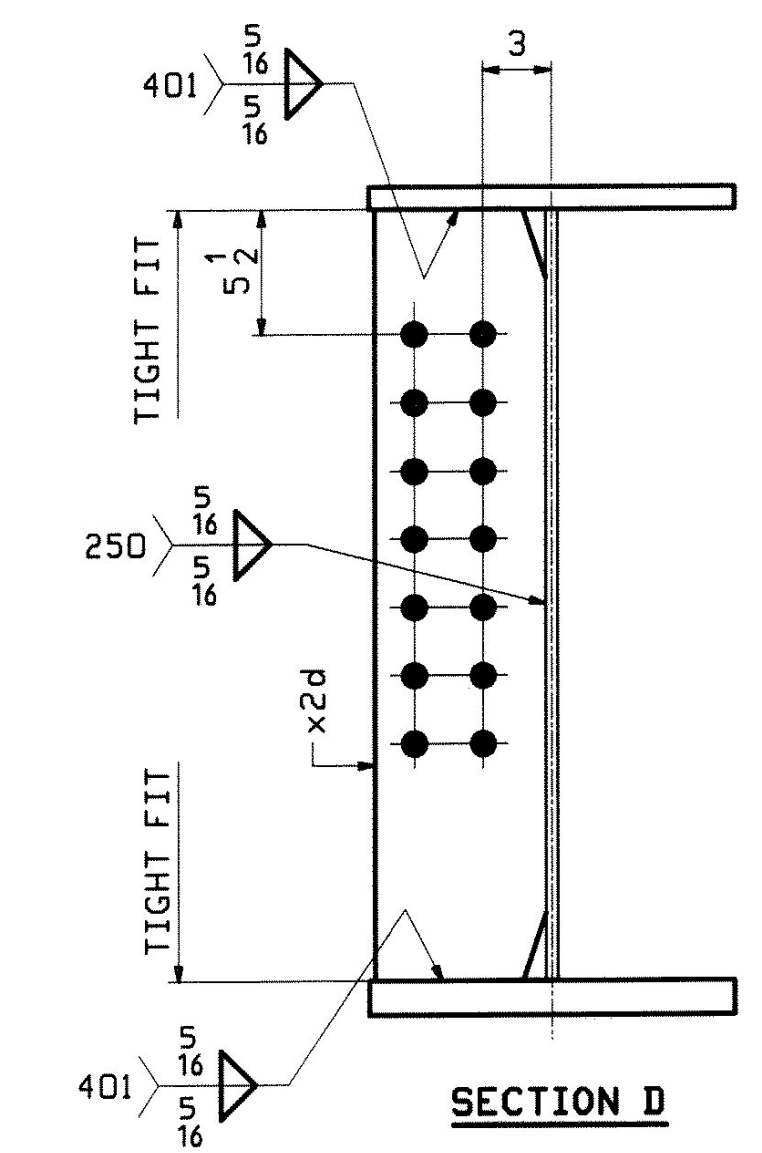
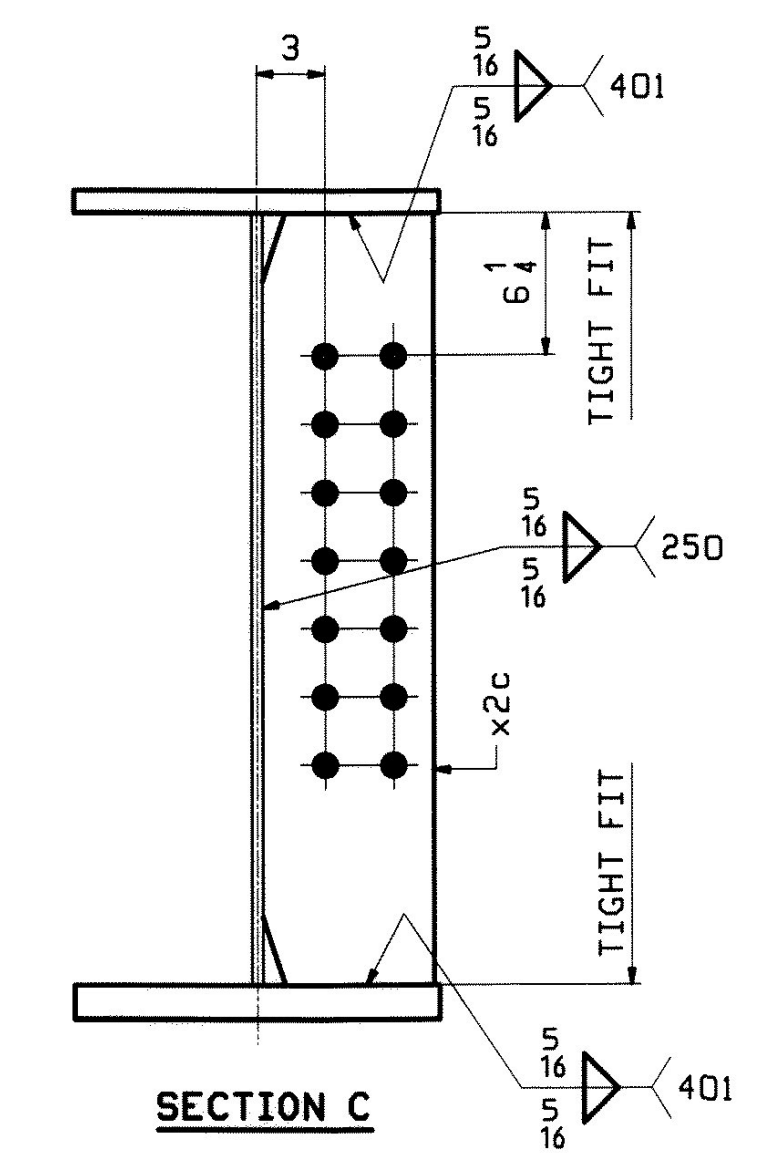
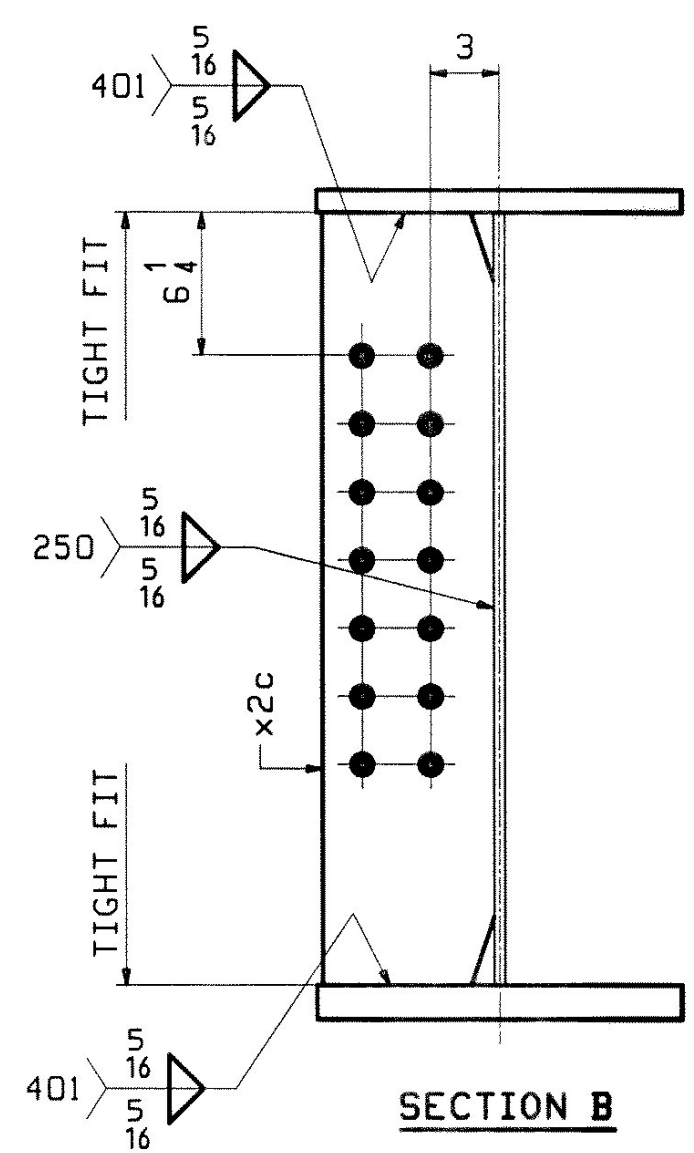
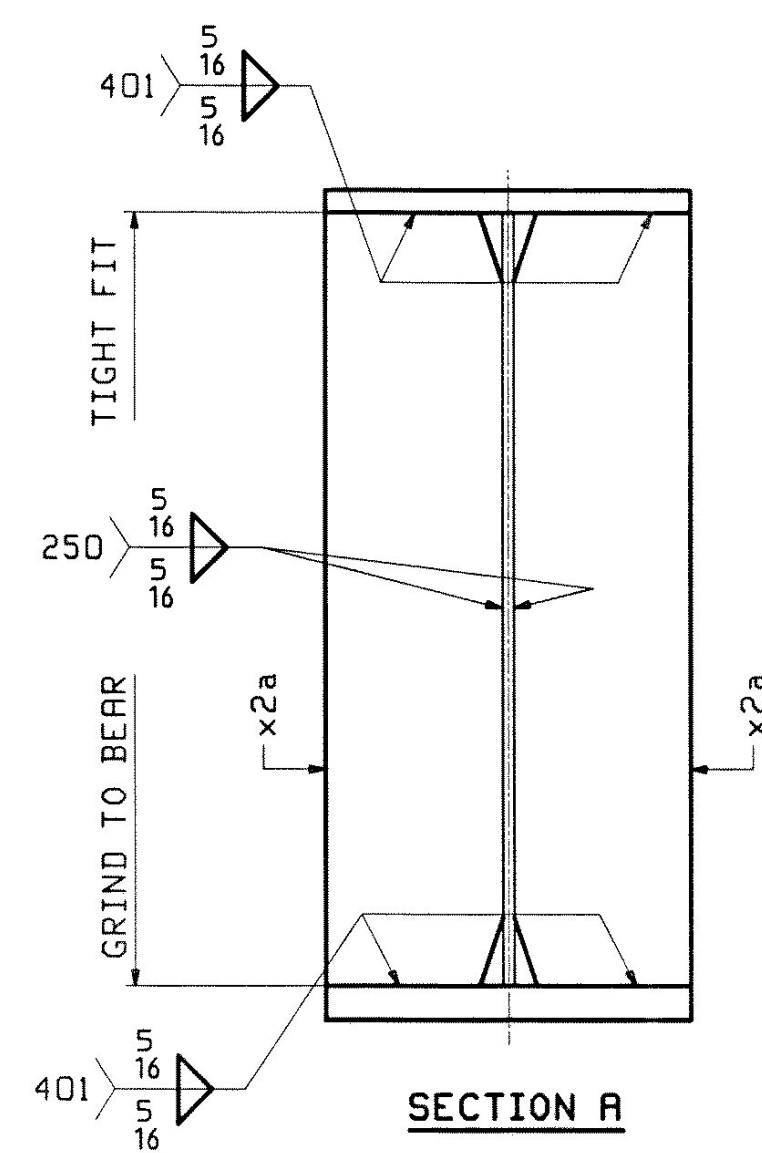
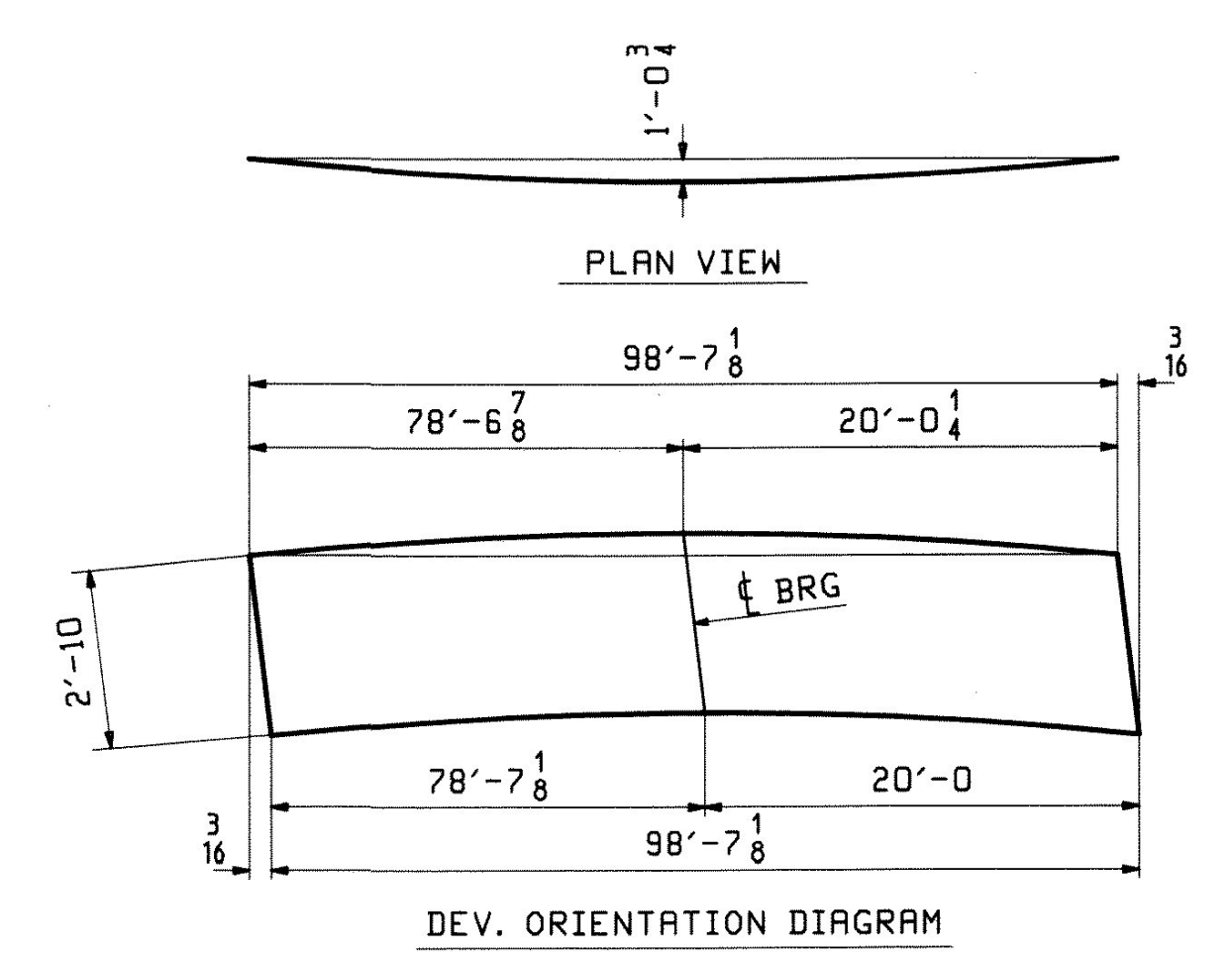
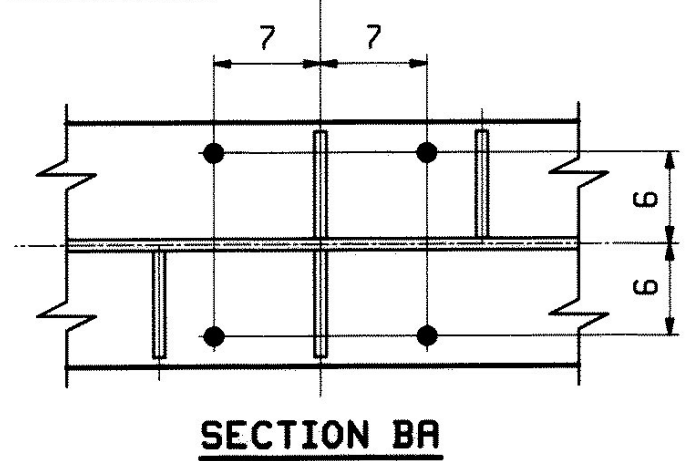


ABM INFO		SHIP		BILL OF MATERIAL		JOB NO.		DRAWING NO.		REV.
PAGE	LINE	MARK	QTY	MARK	MATERIAL	LENGTH FT	INCHES	REMARKS	WT	PROCUREMENT NOTES
		13G3C	1		GIRDER					20774
5	E		1	wa	PL 1/2 x 3/4	48	7 3/8	M270-50HT2		
5	C		1	wb	PL 1/2 x 3/4	50	0	M270-50HT2		
2	W		1	ta	PL 1/2 x 16	58	7 1/4	M270-50HT2		
2	L		1	tb	PL 1/2 x 16	39	11 7/8	M270-50HT2		
1	J		1	ba	PL 1/2 x 16	58	7 1/4	M270-50HT2		
2	L		1	bb	PL 1/2 x 16	39	11 7/8	M270-50HT2		
6	K		2	x2a	PL 7/8 x 7 3/4	2	10	MIE		
6	L		2	x2c	PL 1 1/2 x 7 1/2	2	10			
6	L		10	x2d	PL 1 1/2 x 7 1/2	2	10			

SEE CAMBER DIAGRAM

**ONE - GIRDER - 13G3C (DEV)**  
 FOR FIELD SPLICE & STANDARD DETAILS SEE X SHEETS  
 FOR CAMBER DIAGRAM SEE SHEET C2  
 FOR FLANGE DIAGRAM SEE SHEET F3  
 FOR GENERAL NOTES SEE SHEET GNI



SHOP DRAWINGS ARE REVIEWED UNDER THE SUPERVISION OF REGISTERED PROFESSIONAL ENGINEERS AND ARCHITECTS. REVIEW AS NOTED. REVISIONS MUST BE RECORDED. REVISIONS MUST BE RECORDED. REVISIONS MUST BE RECORDED. DATE: 2/1/10

REV.	DATE	REMARKS	DWN	CHK	APVL	SHOP
0						
MATERIAL:		SURFACE PREP. & PAINT:		HOLES:		SHOP BOLTS:
M270-50W (UN)		SEE GNI		15/16" Ø U.N.		NONE
DESCRIPTION: GIRDER - 13G3C						
CASCO BAY STEEL STRUCTURES, INC. 75 SPRING HILL ROAD SACO, MARINE 04072 PHONE (207) 282-7360 FAX. (207) 282-1179						
STRUCTURE: U.S. 5 over I-91 Bridge No. 19A Putney County of Windham				DRWN:	DATE:	
				WJF	01/12	
				CHKD:	DATE:	
				DO	01/14	
LOCATION: Putney			JOB NO.		DWN NO.	
PROJ. NO. IM 091-1(31)			438		13	
CUSTOMER: VT AOT					REV. △	