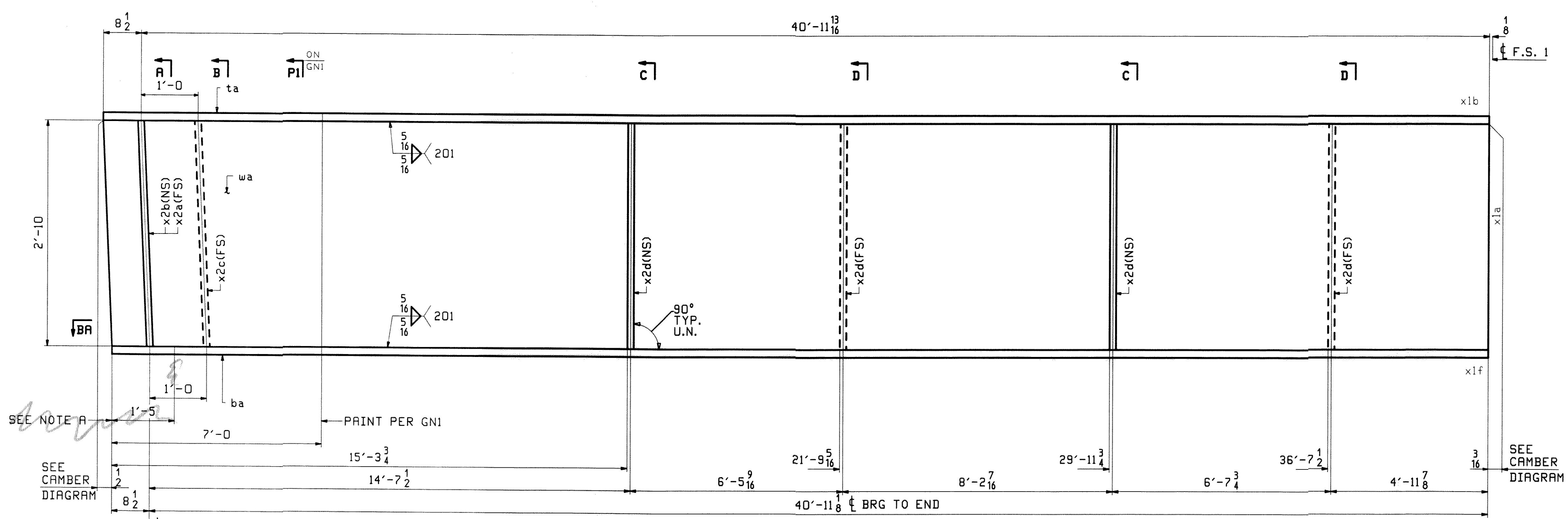


ABM INFO		BILL OF MATERIAL				JOB NO.		DRAWING NO.		REV.
PAGE	LINE	MARK	QTY	MARK	MATERIAL	LENGTH FT INCHES	REMARKS	WT	PROCUREMENT NOTES	
		2G2A	1		GIRDER			8394		
5	N		1	wa	PL $\frac{1}{2}$ x34	41 $\frac{5}{16}$	x270-S0HT2			
3	Q		1	ta	PL 1x16	41 $\frac{5}{16}$	x270-S0HT2			
2	C		1	ba	PL $\frac{1}{2}$ x16	41 $\frac{7}{8}$	x270-S0HT2			
6	K		1	x2a	PL $\frac{7}{8}$ x7 $\frac{3}{4}$	2-10	MIE			
6	K		1	x2b	PL $\frac{7}{8}$ x7 $\frac{3}{4}$	2-10	MIE			
6	L		1	x2c	PL $\frac{1}{2}$ x7 $\frac{1}{2}$	2-10				
6	L		4	x2d	PL $\frac{1}{2}$ x7 $\frac{1}{2}$	2-10				

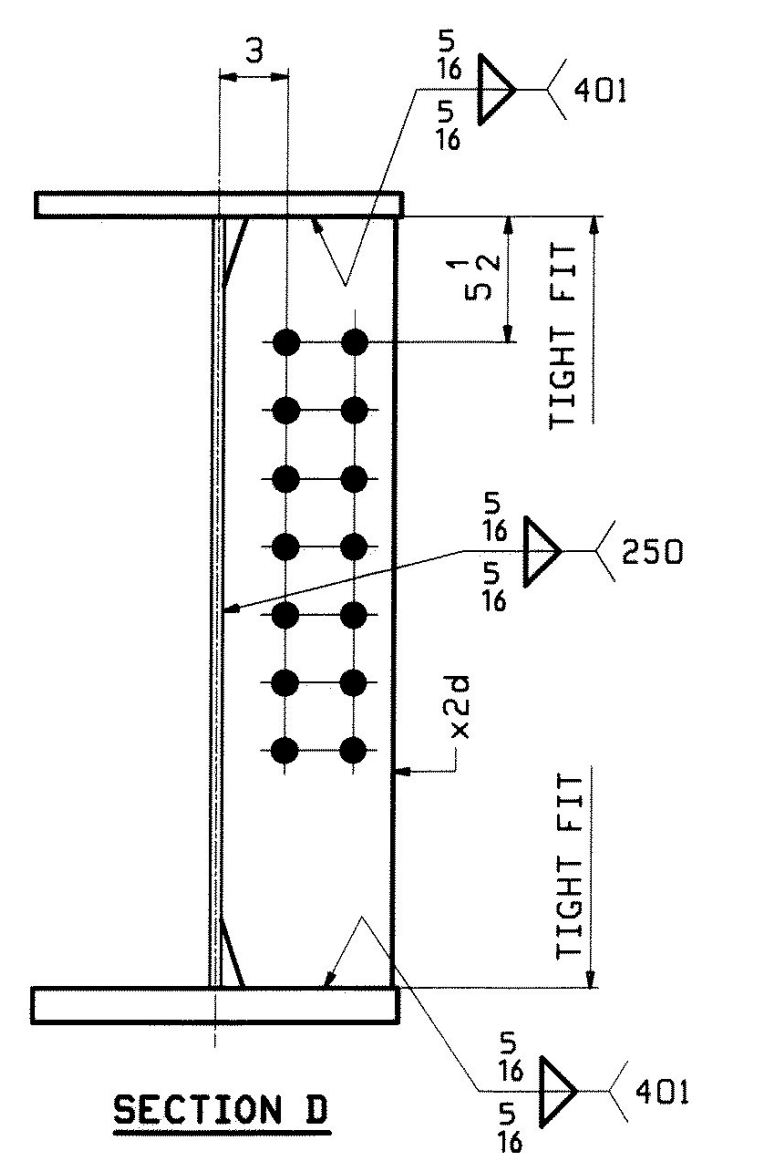
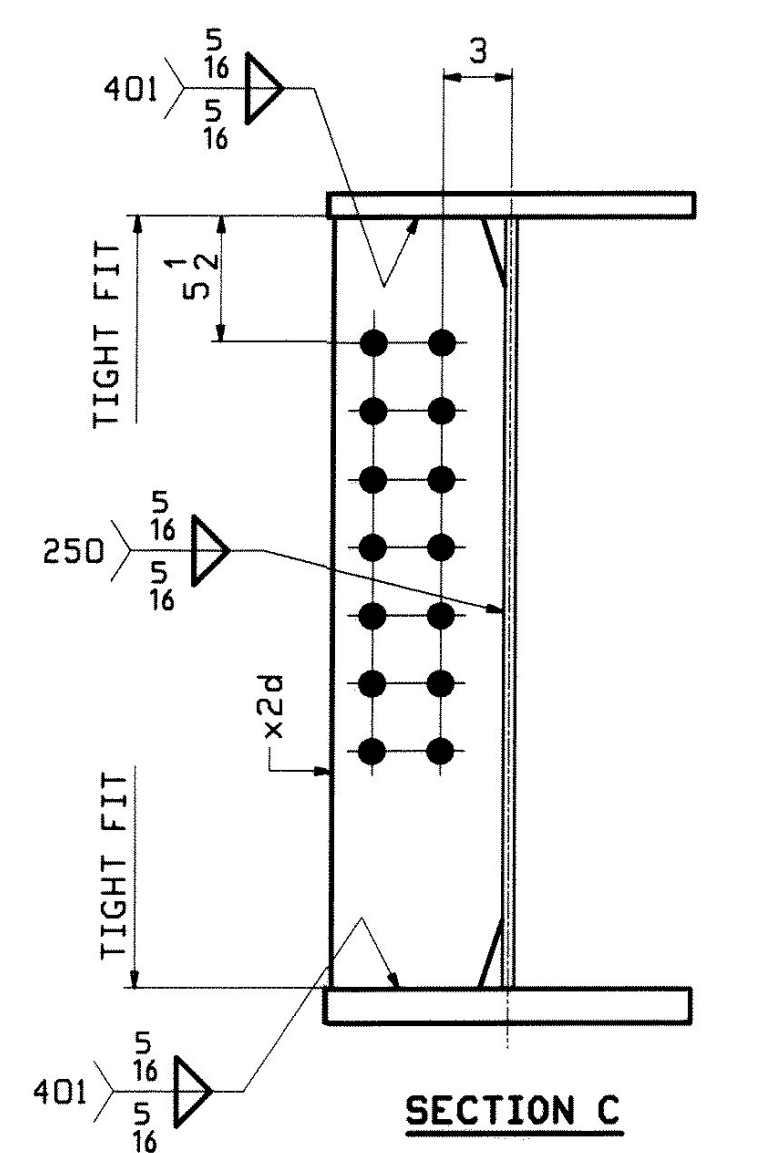
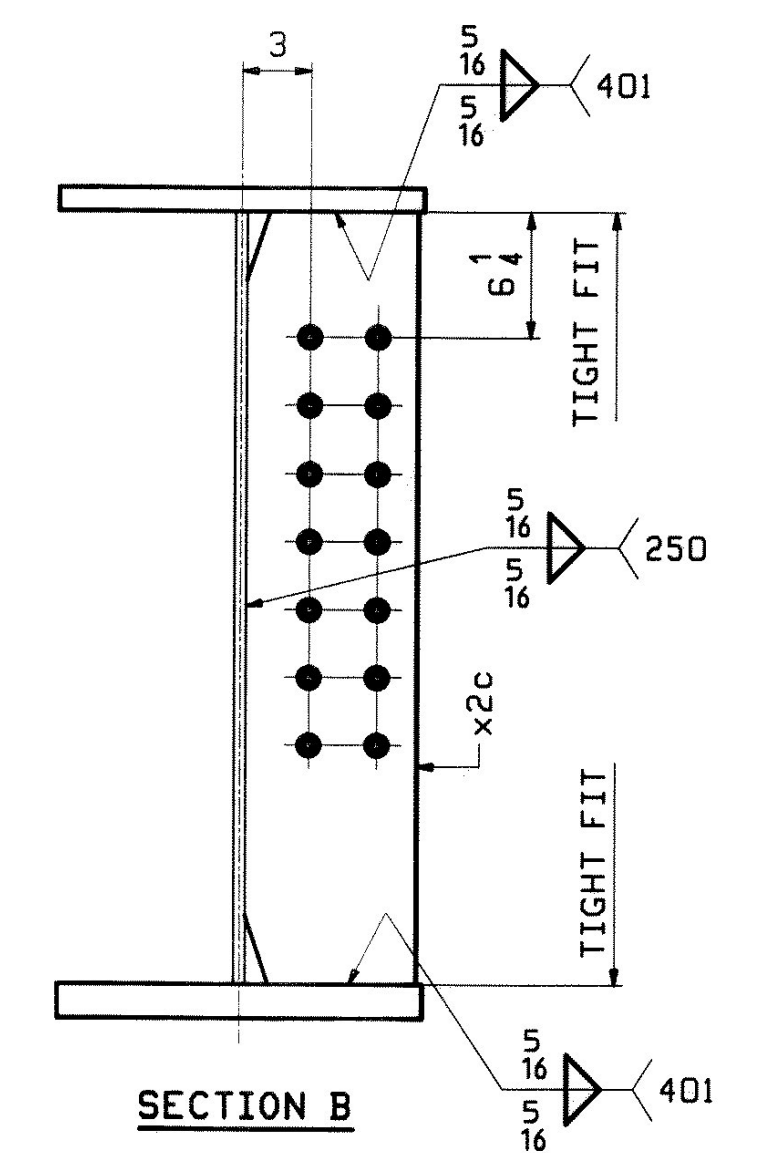
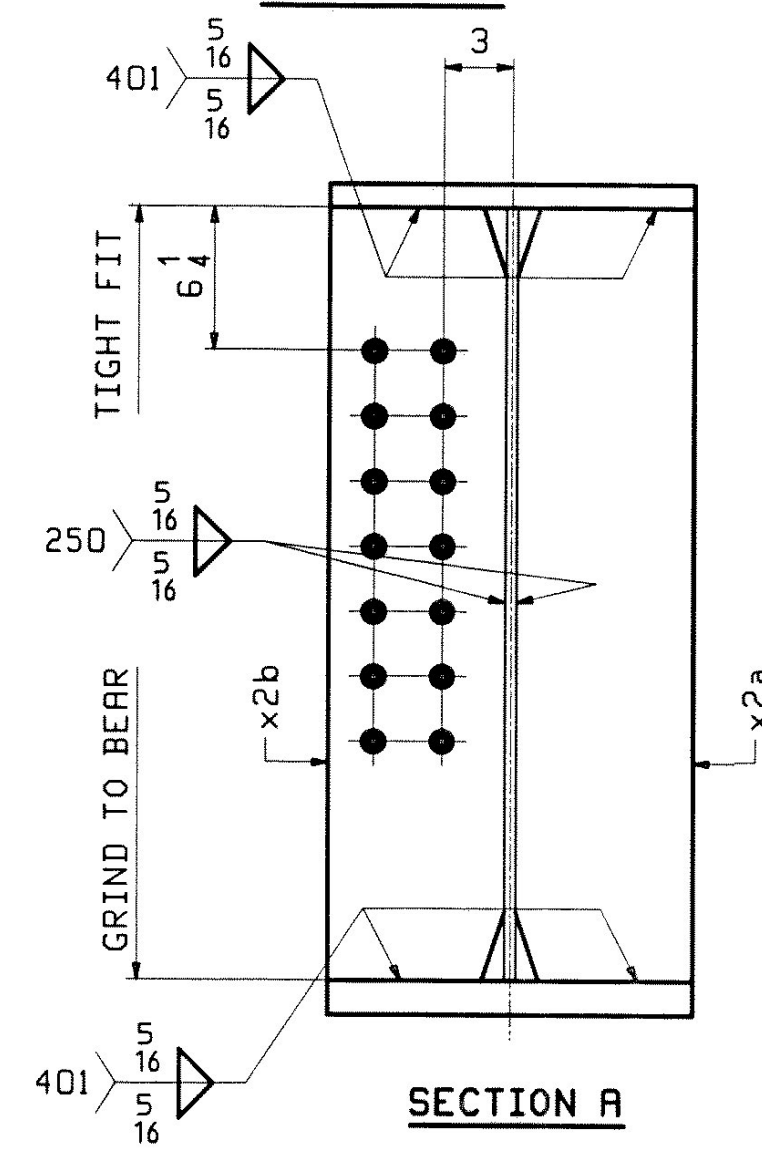
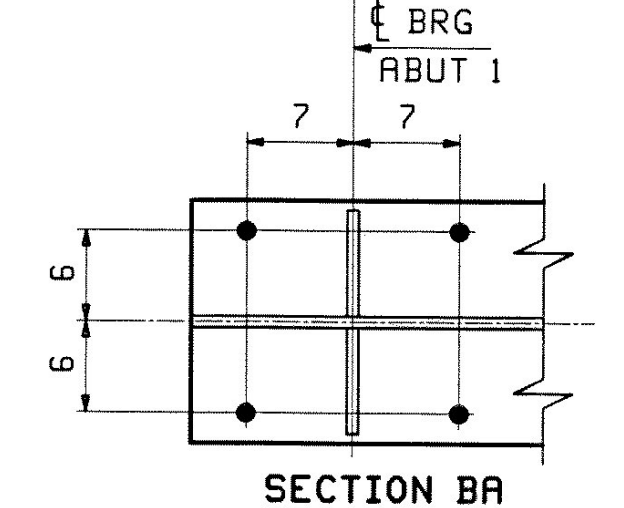
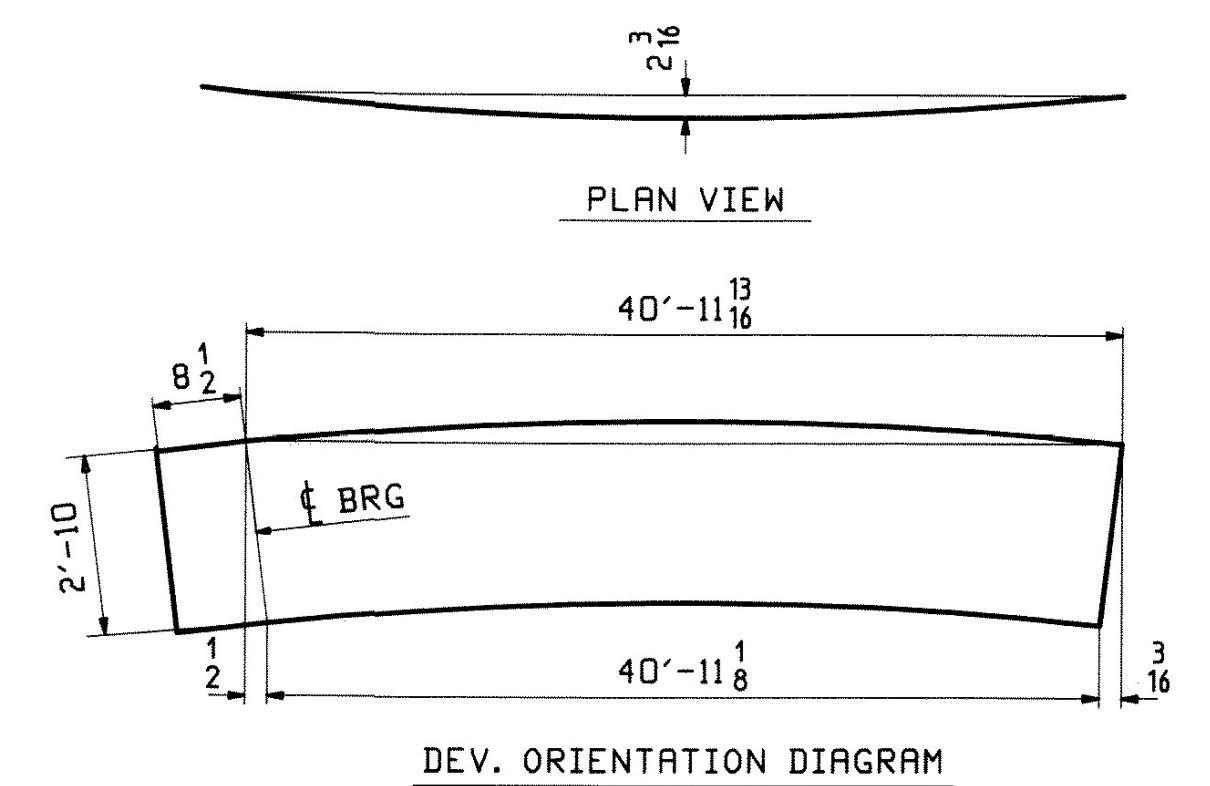


FOR FIELD SPLICE XIMI  
DETAILS SEE SHT XI

SEE CAMBER  
DIAGRAM

**ONE - GIRDER - 2G2A (DEV)**

FOR FIELD SPLICE & STANDARD DETAILS SEE X SHEETS  
FOR CAMBER DIAGRAM SEE SHEET C1  
FOR FLANGE DIAGRAM SEE SHEET F1  
FOR GENERAL NOTES SEE SHEET GNI



NOTE A:  
NO PAINT BOTTOM AND EDGES OF BOTTOM-FLANGE.

DATE: 2/9/10

SIGNATURE: [Signature]

REV.	DATE	REMARKS	DWN	CHK	APVL	SHOP
0						JAN 25 2010
MATERIAL:		SURFACE PREP. & PAINT:		HOLES:		SHOP BOLTS:
M270-S0W (UN)		SEE GNI		15/16" Ø U.N.		NONE
DESCRIPTION: GIRDER - 2G2A						
CASCO BAY STEEL STRUCTURES, INC. 75 SPRING HILL ROAD SACO, MAINE 04072 PHONE (207) 282-7360 FAX. (207) 282-1179						
STRUCTURE: U.S. 5 over I-91 Bridge No. 19A Putney County of Windham			DRAWN:	DATE:		
			WJF	01/08		
			CHKD:	DATE:		
			DO	01/13		
LOCATION: Putney			JOB NO.	DWG NO.		
PROJ NO. IM 091-(31)			438	2		
CUSTOMER: VT ROT				REV. [Signature]		

DWG. DATE: 01/03/10 10:40:33 AM