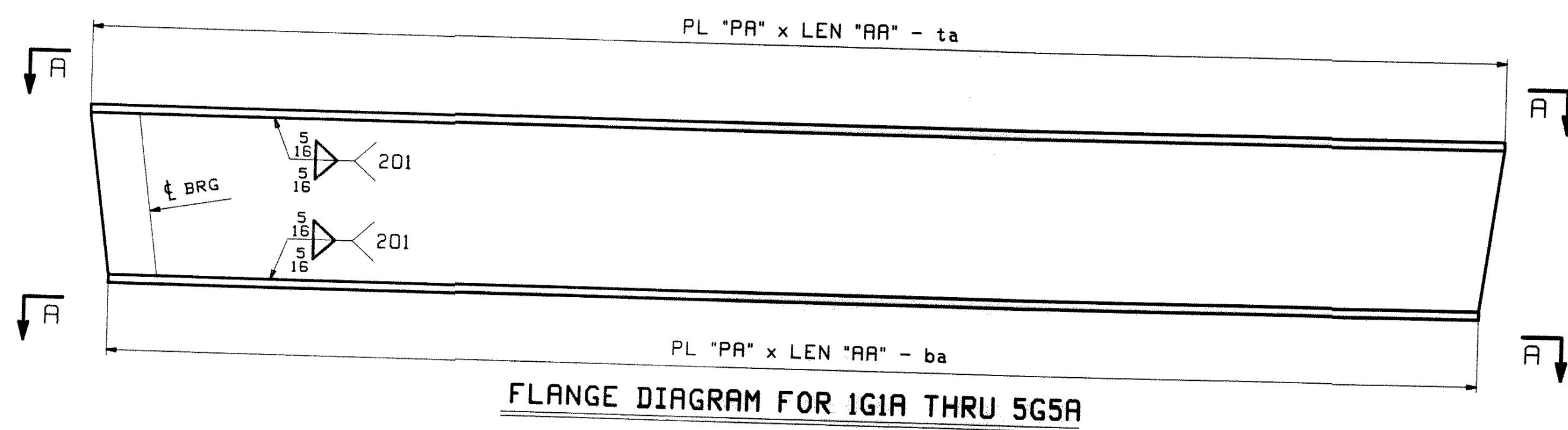
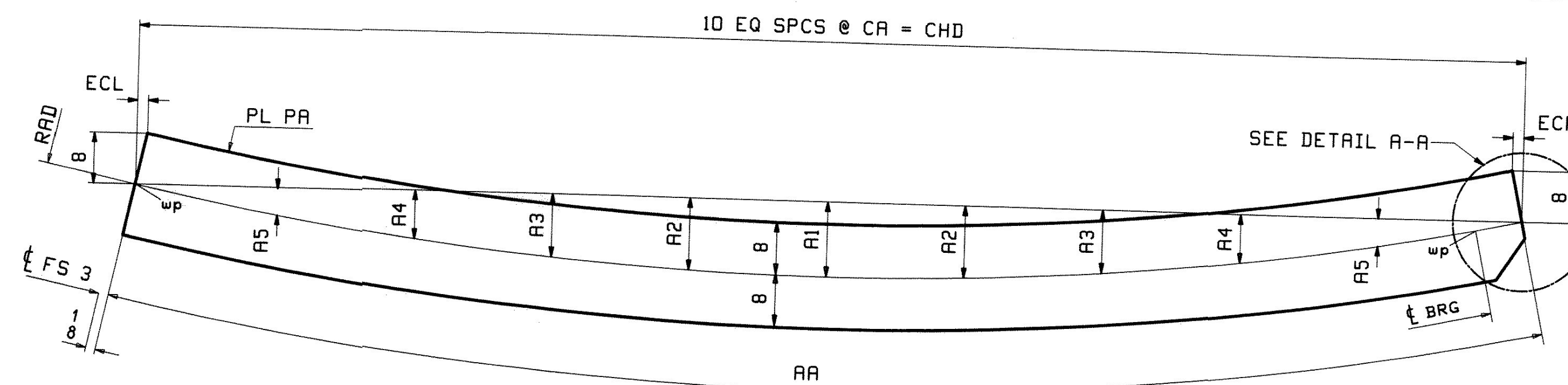


SECTION A-A FOR 1G1A THRU 5G5A

LOCATION	RAD	CHD	AA	CA	A1	A2	A3	A4	A5	PL PA (M270-50WT2)
1G1A TOP FLG	1130.92	42'-0	42'-0	4'-2 ³ / ₈	2 ⁵ / ₁₆	2 ¹ / ₄	1 ¹⁵ / ₁₆	1 ¹ / ₂	1 ¹³ / ₁₆	PL 1 x 16-ta (3/N)
1G1A BTM FLG	1130.92	41'-11 ⁵ / ₁₆	41'-11 ⁵ / ₁₆	4'-2 ³ / ₈	2 ⁵ / ₁₆	2 ¹ / ₄	1 ¹⁵ / ₁₆	1 ¹ / ₂	1 ¹³ / ₁₆	PL 1 ¹ / ₂ x 16-ba (2/A)
2G2A TOP FLG	1138.42	41'-8 ⁵ / ₁₆	41'-8 ⁵ / ₁₆	4'-2	2 ⁵ / ₁₆	2 ³ / ₁₆	1 ¹⁵ / ₁₆	1 ⁷ / ₁₆	1 ¹³ / ₁₆	PL 1 x 16-ta (3/Q)
2G2A BTM FLG	1138.42	41'-7 ⁵ / ₈	41'-7 ⁵ / ₈	4'-2	2 ⁵ / ₁₆	2 ³ / ₁₆	1 ¹⁵ / ₁₆	1 ⁷ / ₁₆	1 ¹³ / ₁₆	PL 1 ¹ / ₂ x 16-ba (2/C)
3G3A TOP FLG	1145.92	41'-4 ³ / ₈	41'-4 ³ / ₈	4'-1 ⁵ / ₈	2 ¹ / ₄	2 ¹ / ₈	1 ⁷ / ₈	1 ⁷ / ₁₆	1 ¹³ / ₁₆	PL 1 x 16-ta (3/S)
3G3A BTM FLG	1145.92	41'-4 ¹ / ₈	41'-4 ¹ / ₈	4'-1 ⁵ / ₈	2 ¹ / ₄	2 ¹ / ₈	1 ⁷ / ₈	1 ⁷ / ₁₆	1 ¹³ / ₁₆	PL 1 ¹ / ₂ x 16-ba (2/E)
4G4A TOP FLG	1153.42	41'-1 ⁵ / ₁₆	41'-1 ⁵ / ₁₆	4'-1 ¹ / ₄	2 ³ / ₁₆	2 ¹ / ₈	1 ⁷ / ₈	1 ³ / ₈	1 ¹³ / ₁₆	PL 1 x 16-ta (3/U)
4G4A BTM FLG	1153.42	41'-0 ⁵ / ₈	41'-0 ⁵ / ₈	4'-1 ¹ / ₄	2 ³ / ₁₆	2 ¹ / ₈	1 ¹³ / ₁₆	1 ³ / ₈	1 ¹³ / ₁₆	PL 1 ¹ / ₂ x 16-ba (2/G)
5G5A TOP FLG	1160.92	40'-9 ¹⁵ / ₁₆	40'-9 ¹⁵ / ₁₆	4'-1	2 ¹ / ₈	2 ¹ / ₁₆	1 ¹³ / ₁₆	1 ³ / ₄	3 ³ / ₄	PL 1 x 16-ta (3/W)
5G5A BTM FLG	1160.92	40'-9 ⁵ / ₁₆	40'-9 ⁵ / ₁₆	4'-1	2 ¹ / ₈	2 ¹ / ₁₆	1 ¹³ / ₁₆	1 ³ / ₄	3 ³ / ₄	PL 1 ¹ / ₂ x 16-ba (2/J)

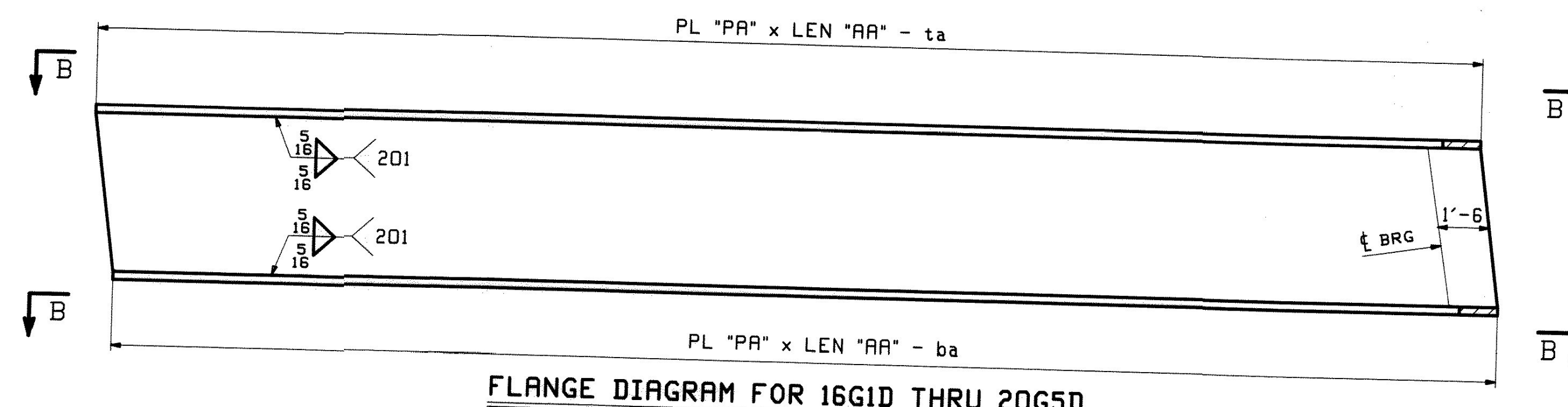


FLANGE DIAGRAM FOR 1G1A THRU 5G5A

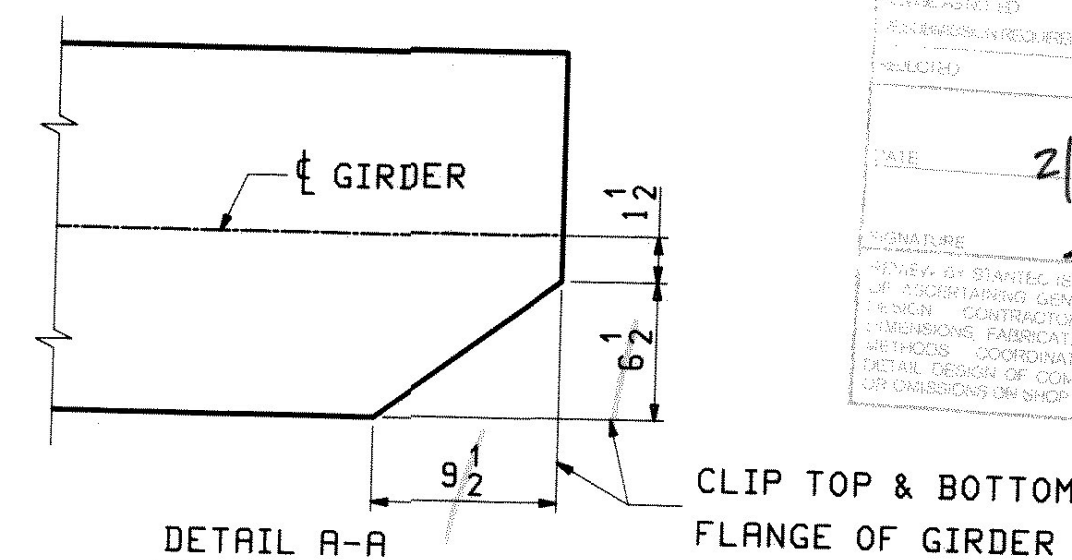


SECTION B-B FOR 16G1D THRU 20G5D

LOCATION	RAD	CHD	AA	CA	A1	A2	A3	A4	A5	ECL	ECR	PL PA (M270-50WT2)
16G1D TOP FL	1130.92	62'-3 ¹⁵ / ₁₆	62'-4 ¹ / ₁₆	6'-2 ³ / ₄	5 ¹ / ₈	4 ¹⁵ / ₁₆	4 ⁵ / ₁₆	3 ⁵ / ₁₆	1 ⁷ / ₈	1 ¹ / ₄	1 ¹ / ₄	PL 1 x 16-ta (2/N)
16G1D BTM FL	1130.92	62'-4 ³ / ₁₆	62'-4 ⁵ / ₁₆	6'-2 ¹³ / ₁₆	5 ¹ / ₈	4 ¹⁵ / ₁₆	4 ⁵ / ₁₆	3 ⁵ / ₁₆	1 ⁷ / ₈	1 ¹ / ₄	1 ¹ / ₄	PL 1 ¹ / ₂ x 16-ba (1/A)
17G2D TOP FL	1138.42	61'-3 ⁵ / ₈	61'-3 ¹¹ / ₁₆	6'-1 ⁹ / ₁₆	4 ¹⁵ / ₁₆	4 ³ / ₄	4 ³ / ₁₆	3 ³ / ₁₆	1 ¹³ / ₁₆	3 ³ / ₁₆	3 ³ / ₁₆	PL 1 x 16-ta (2/Q)
17G2D BTM FL	1138.42	61'-3 ¹³ / ₁₆	61'-3 ⁷ / ₈	6'-1 ⁹ / ₁₆	4 ¹⁵ / ₁₆	4 ³ / ₄	4 ³ / ₁₆	3 ³ / ₁₆	1 ¹³ / ₁₆	3 ³ / ₁₆	3 ³ / ₁₆	PL 1 ¹ / ₂ x 16-ba (1/C)
18G3D TOP FL	1145.92	60'-3 ¹⁵ / ₁₆	60'-4	6'-0 ³ / ₈	4 ³ / ₄	4 ⁹ / ₁₆	4	3 ¹ / ₁₆	1 ¹¹ / ₁₆	3 ³ / ₁₆	3 ³ / ₁₆	PL 1 x 16-ta (2/S)
18G3D BTM FL	1145.92	60'-4 ¹ / ₈	60'-4 ³ / ₁₆	6'-0 ³ / ₈	4 ³ / ₄	4 ⁹ / ₁₆	4	3 ¹ / ₁₆	1 ¹¹ / ₁₆	3 ³ / ₁₆	3 ³ / ₁₆	PL 1 ¹ / ₂ x 16-ba (1/E)
19G4D TOP FL	1153.42	59'-4 ⁷ / ₈	59'-4 ¹⁵ / ₁₆	5'-11 ¹ / ₄	4 ⁹ / ₁₆	4 ³ / ₈	3 ⁷ / ₈	2 ¹⁵ / ₁₆	1 ⁵ / ₈	3 ³ / ₁₆	3 ³ / ₁₆	PL 1 x 16-ta (2/U)
19G4D BTM FL	1153.42	59'-5	59'-5 ¹ / ₁₆	5'-11 ¹ / ₄	4 ⁹ / ₁₆	4 ⁷ / ₁₆	3 ⁷ / ₈	2 ¹⁵ / ₁₆	1 ⁵ / ₈	3 ³ / ₁₆	3 ³ / ₁₆	PL 1 ¹ / ₂ x 16-ba (1/G)
20G5D TOP FL	1160.92	58'-6 ⁷ / ₁₆	58'-6 ¹ / ₂	5'-10 ³ / ₁₆	4 ⁷ / ₁₆	4 ¹ / ₄	3 ¹¹ / ₁₆	2 ¹³ / ₁₆	1 ⁹ / ₁₆	3 ³ / ₁₆	3 ³ / ₁₆	PL 1 x 16-ta (2/W)
20G5D BTM FL	1160.92	58'-6 ⁹ / ₁₆	58'-6 ⁵ / ₈	5'-10 ¹ / ₄	4 ⁷ / ₁₆	4 ¹ / ₄	3 ³ / ₄	2 ¹³ / ₁₆	1 ⁹ / ₁₆	3 ³ / ₁₆	3 ³ / ₁₆	PL 1 ¹ / ₂ x 16-ba (1/J)



FLANGE DIAGRAM FOR 16G1D THRU 20G5D



CLIP TOP & BOTTOM FLANGE OF GIRDER

DATE: 2/9/10
 DRAWN: AS
 CHECKED: AS
 APPROVED: AS

NOTES:
 1. FOR GENERAL SHOP NOTES SEE DRAWING GNI.

REV.	DATE	REMARKS	DWN	CHK	APVL	SHOP
0						
MATERIAL: M270-50W		SURFACE PREP. & PAINT: AS NOTED		HOLES: AS NOTED		SHOP BOLTS: AS NOTED
DESCRIPTION: FLANGE DIAGRAM						
CASCO BAY STEEL STRUCTURES, INC. 75 SPRING HILL ROAD SACO, MAINE 04072 PHONE (207) 282-7360 FAX. (207) 282-1179						
STRUCTURE: U.S. 5 over I-91 Bridge No. 19A Putney County of Windham			DRAWN: JB		DATE: 01/05	
LOCATION: Putney			CHKD: SOB		DATE: 01/08	
PROJ NO. IM 091-1(3)			JOB NO. 438		DWG NO. F1	
CUSTOMER: VT AOT					REV. 1	