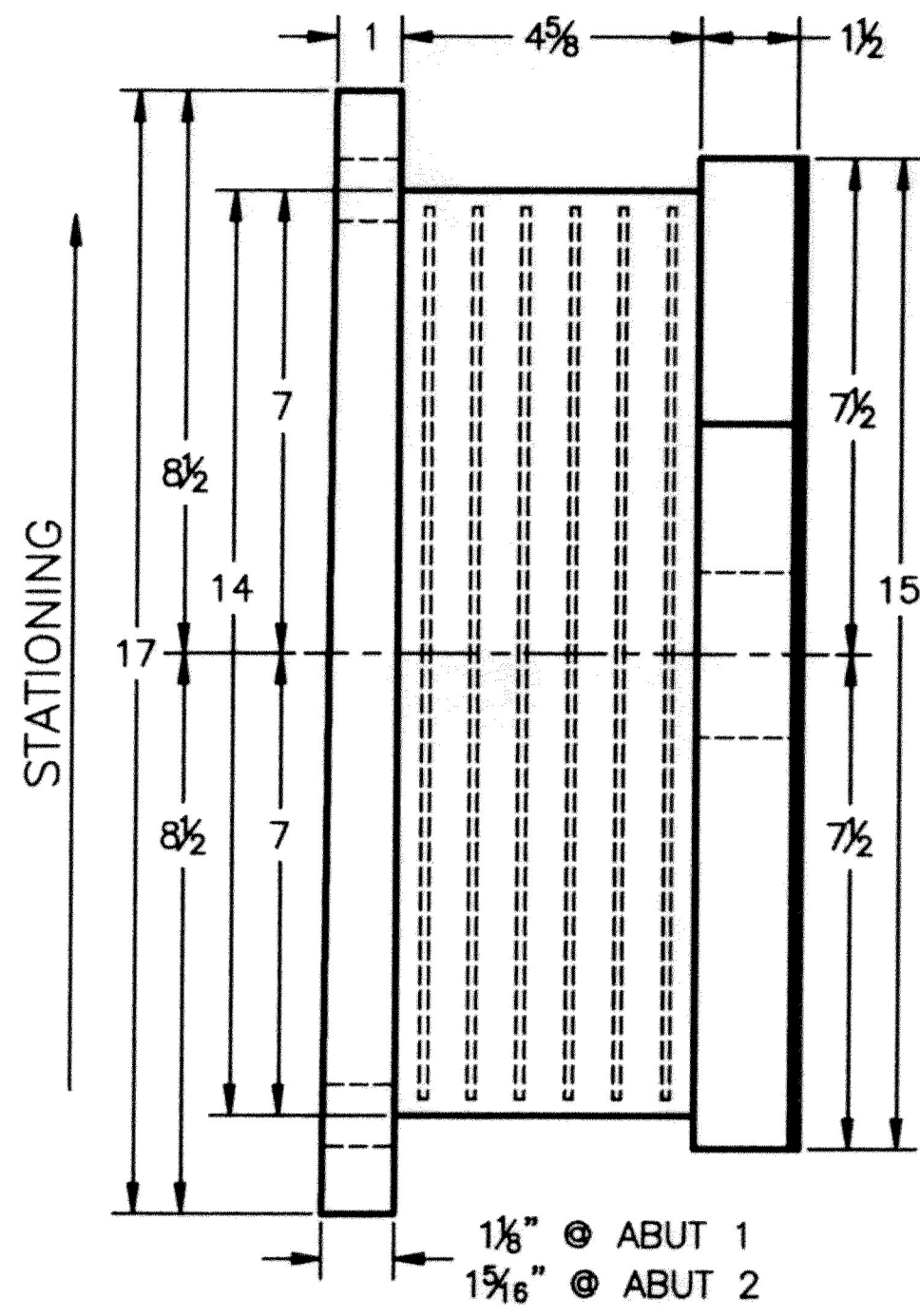
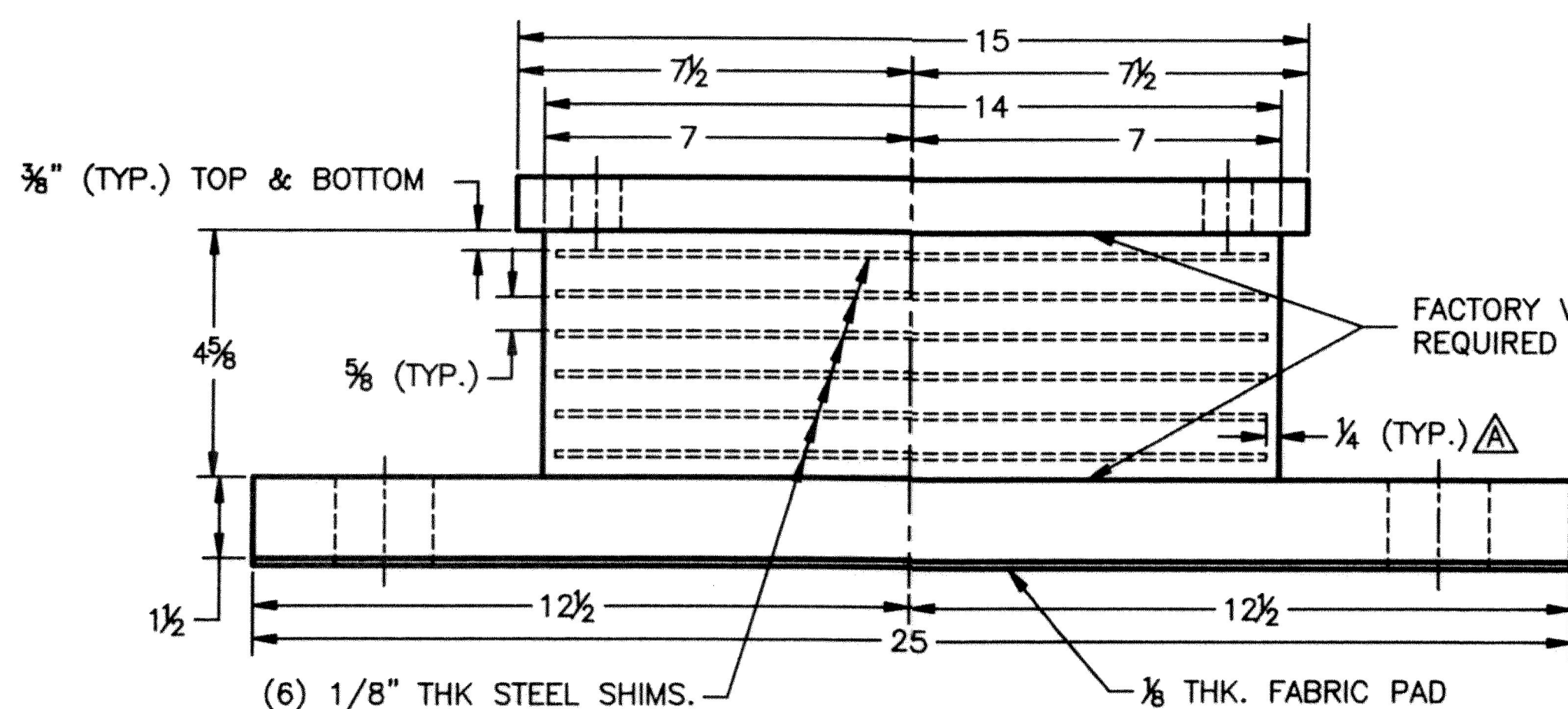


**PLAN VIEW**  
QTY REQ'D = 10 ASSY.  
ABUTMENTS 1 & 2



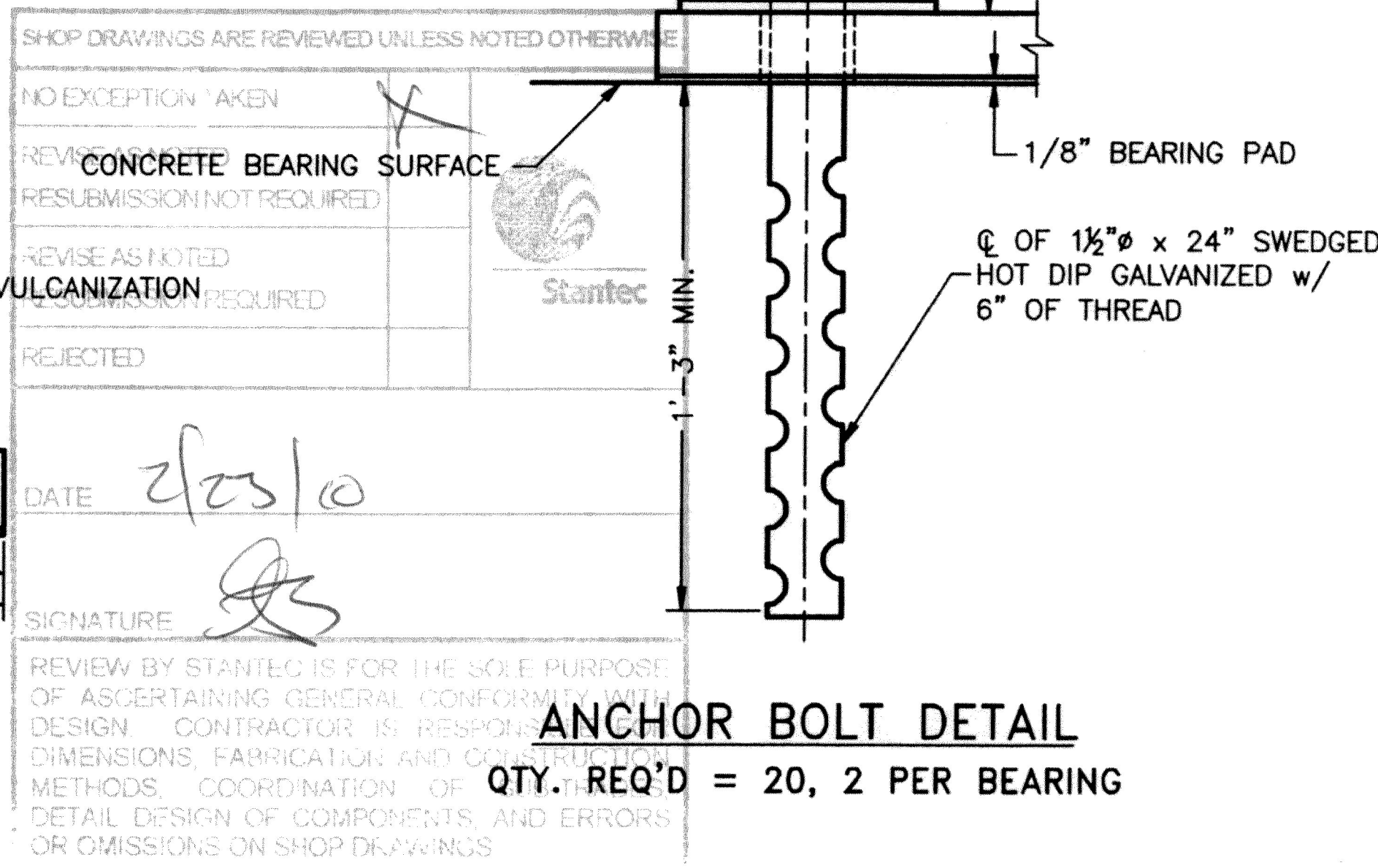
STATIONING



**ELEVATION VIEW**

3" x 4" x 3/8" WASHER PLATE  
w/ 1 5/8" Ø HOLE FOR BOLT

HEAVY HEX NUT



**ANCHOR BOLT DETAIL**

QTY. REQ'D = 20, 2 PER BEARING

| REVISIONS |     |                     |         |          |
|-----------|-----|---------------------|---------|----------|
| ZONE      | REV | DESCRIPTION         | DATE    | APPROVED |
| --        | A   | PER ENGINEER'S MARK | 2/23/10 | C.A.M.   |

**NOTES:**

- BEARINGS TO BE MANUFACTURED ACCORDING TO AASHTO STANDARD SPECIFICATIONS FOR HIGHWAY BRIDGES, 17th. EDITION, 2002.
- THE BEARINGS ARE DESIGNED SO THAT THE SUPERSTRUCTURE MAY BE ERECTED WHEN THE AMBIENT AIR TEMPERATURE IS WITHIN THE RANGE OF 20°F. TO 70°F.
- THE ELASTOMER AASHTO GR. (NATURAL RUBBER), TEMPERATURE GR. 3, SHALL HAVE A DUROMETER HARDNESS SHORE A 60 ± 5 POINTS. SHEAR MODULUS TO BE 152 PSI ± 15%.
- STEEL SHIM PLATES FOR INTERNAL LAMINATES SHALL BE ROLLED MILD STEEL CONFORMING TO THE REQUIREMENTS OF ASTM A-1011, GRADE 36. SHIMS SHALL BE SMOOTH CUT, DEBURRED, GRIT BLASTED, AND DEGREASED PRIOR TO VULCANIZATION.
- ALL STEEL IN BEARINGS SHALL BE ASTM A-709 GRADE 36.
- ALL STEEL PRODUCED IN THE U.S.A.
- CONTACT PETER SOMOGYI , COORDINATOR.
- TOLERANCES: THICKNESS -0+1/16"  
PLAN -0+1/16"
- MANUFACTURING FACILITY LOCATION:  
AMSCOT STRUCTURAL PRODUCTS INC.  
241 EAST BLACKWELL STREET  
DOVER, NJ 07801
- ALL DIMENSIONS ARE IN INCHES.
- ALL BEARING DEVICES SHALL BE GALVANIZED AS PER STANDARD SPECIFICATIONS 506.15 AND 531.04(b), AS MODIFIED BY THE GENERAL SPECIAL PROVISIONS.
- ALL ANCHOR BOLTS, NUTS AND WASHERS SHALL BE GALVANIZED.

VERMONT AGENCY OF TRANSPORTATION  
PROPOSED IMPROVEMENT BRIDGE PROJECT  
TOWN OF PUTNEY, COUNTY OF WINDHAM  
US RT. 5 FAS (MAJOR COLLECTOR), BRIDGE 19A

EXPANSION ELASTOMERIC  
BEARING DETAIL

**AMSCOT**

STRUCTURAL PRODUCTS CORP.

DOVER, NJ

JOB # 3383

SCALE: N.T.S. CHECKED: B.F. DRAWN BY: C.A.M.

DATE: 1/28/10 REVISION: A

FOR: J.A. MCDONALD, INC.

DWG NO: JAM10A2RA

SHEET NO. 2 OF 3