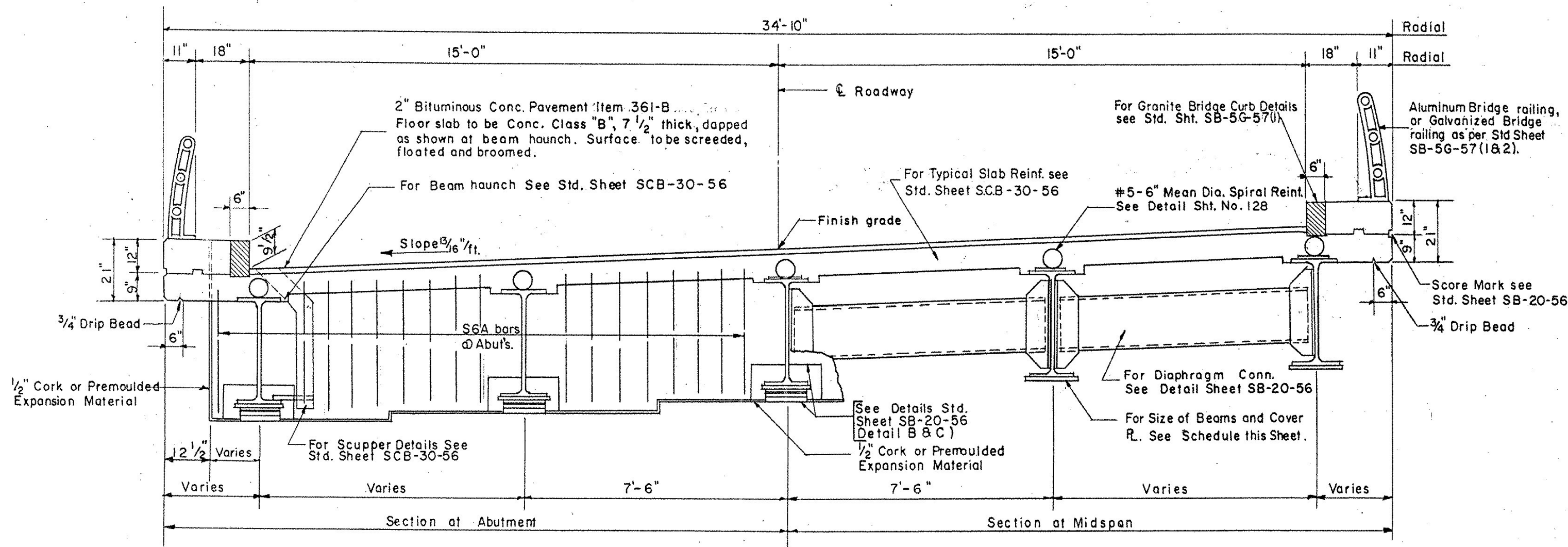
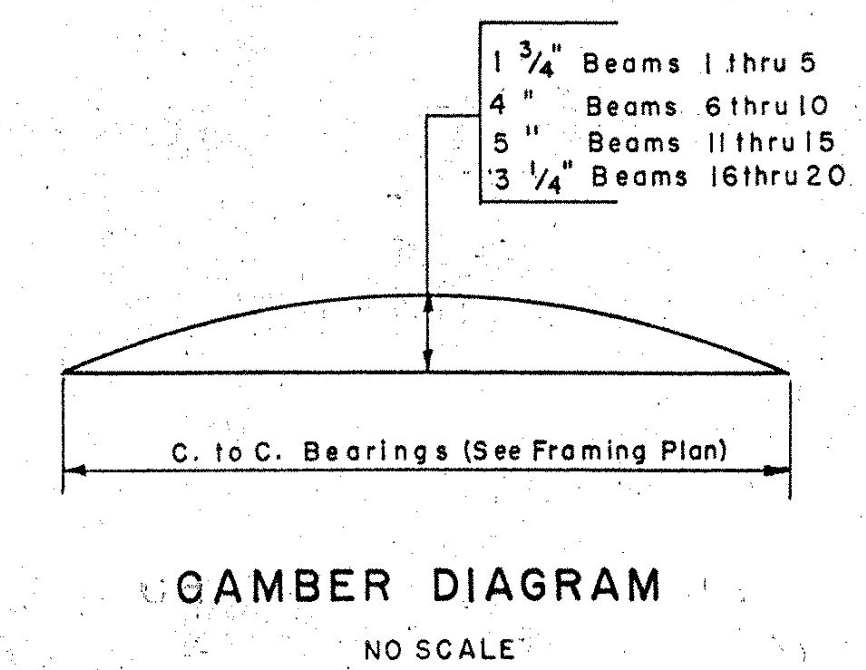
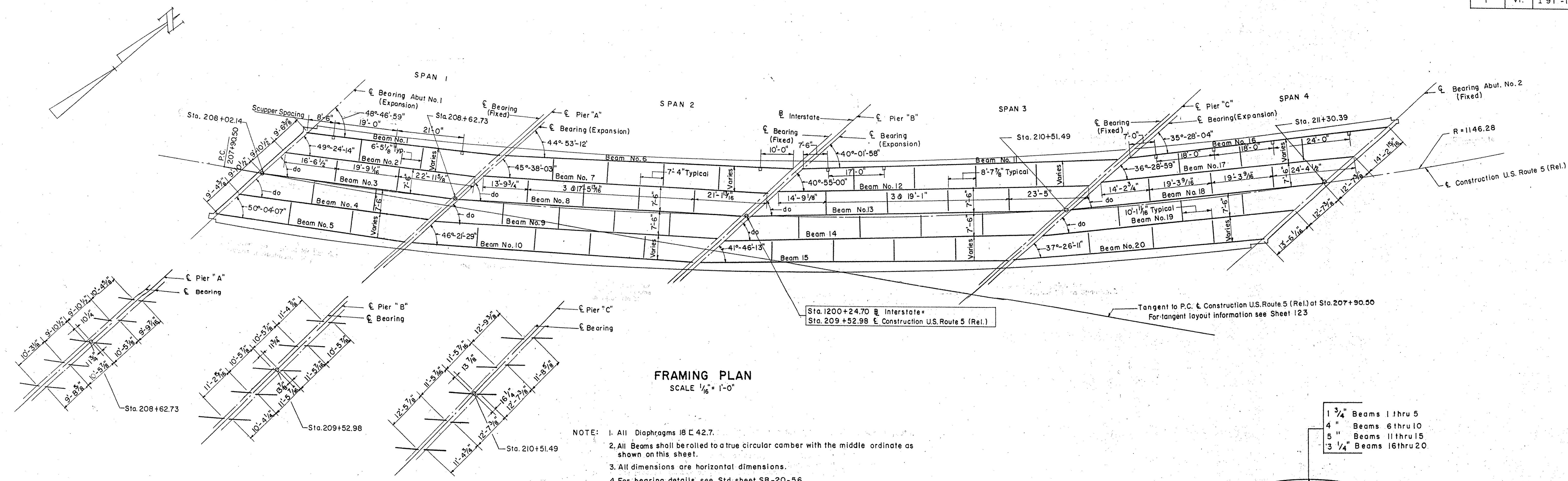


B. P. R. DIV. NO.	STATE	PROJECT NO.	SHEET NO.	TOTAL SHEETS
1	VT.	191-1(10)	127	328



BEAM NO.	C. to C. BEARINGS	BEAM SIZE	COVER PLATES
1	59'-9 7/8"	36 WF150	10" x 5/8" x 38'-0" Bottom
2	59'-3 3/8"	do	do
3	do	do	do
4	do	do	do
5	58'-8 3/8"	do	do
6	88'-6 3/4"	36 WF 300	14" x 1" x 52'-8" Bottom
7	87'-5 1/8"	do	do
8	do	do	do
9	do	do	do
10	86'-4 3/8"	do	do
11	97'-2"	do	Top 12" x 1/2" x 63'-6" Bot. 18" x 5/8" x 66'-9"
12	95'-5 1/8"	do	do
13	do	do	do
14	do	do	do
15	93'-9 7/8"	do	do
16	79'-2 7/8"	36 WF194	14" x 1 1/4" x 54'-0" Bot.
17	77'-2 7/8"	do	do
18	do	do	do
19	do	do	do
20	75'-6 1/8"	do	do

PUTNEY - BRIDGE 19A
NH F019-1(15)
SHEET NO. 74
FOR REFERENCE ONLY

IM 091-1(31)
This sheet for information only

BR 17

STRUCTURAL STEEL PLAN

STATE OF VERMONT
DEPARTMENT OF HIGHWAYS
INTERSTATE PROJECT in the town of
PUTNEY

INTERSTATE UNDER STA. 1200+24.70
U.S. ROUTE 5 (REL.) STA. 209+52.98

THE CLARKESON ENGINEERING CO. INC.
CONSULTING ENGINEERS

BOSTON MASSACHUSETTS
SURVEYED BY H.B.C. CHECKED BY D.S. SCALE AS NOTED
DRAWN BY H.B.C. IN CHARGE J.V.B. DATE
PROJECT NO. 191-1(10) SHEET 127 OF 328