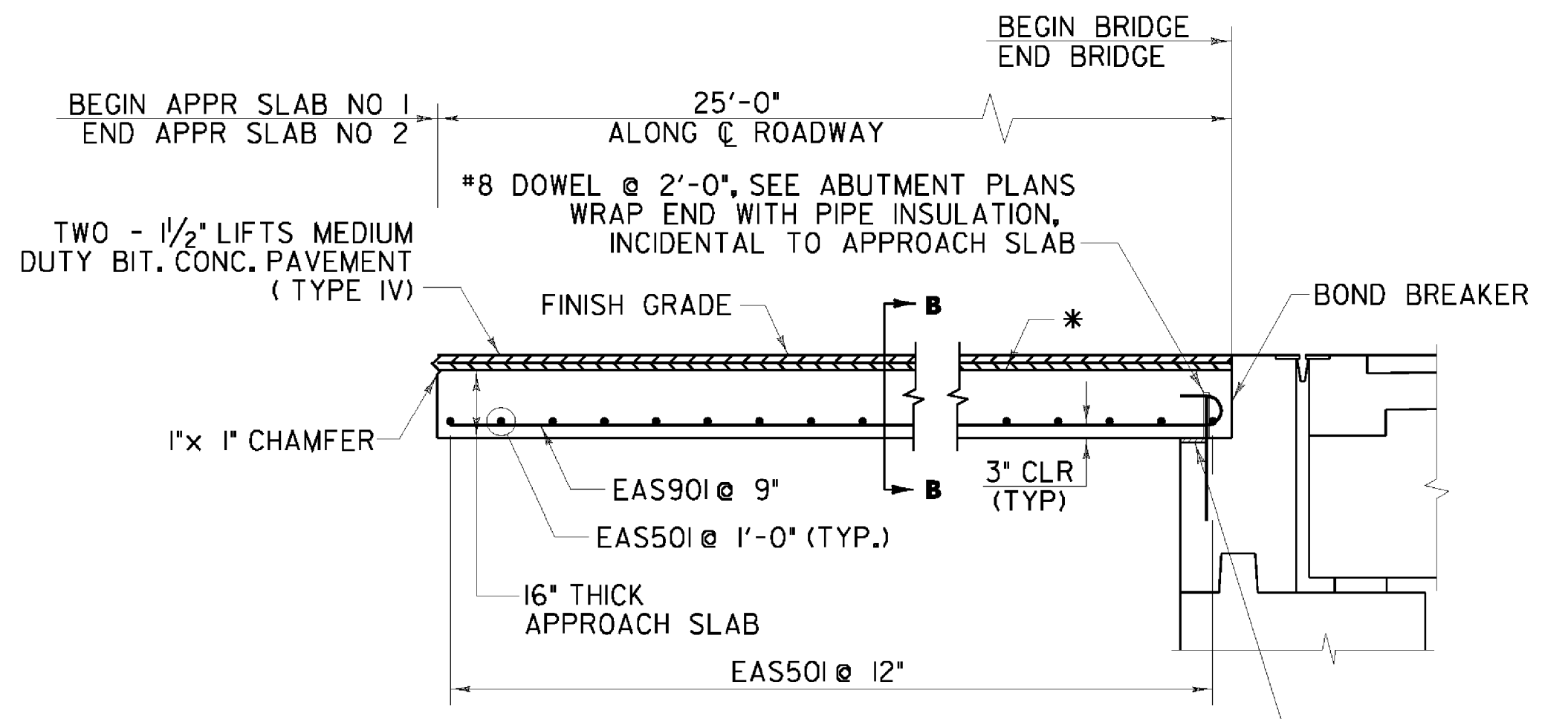
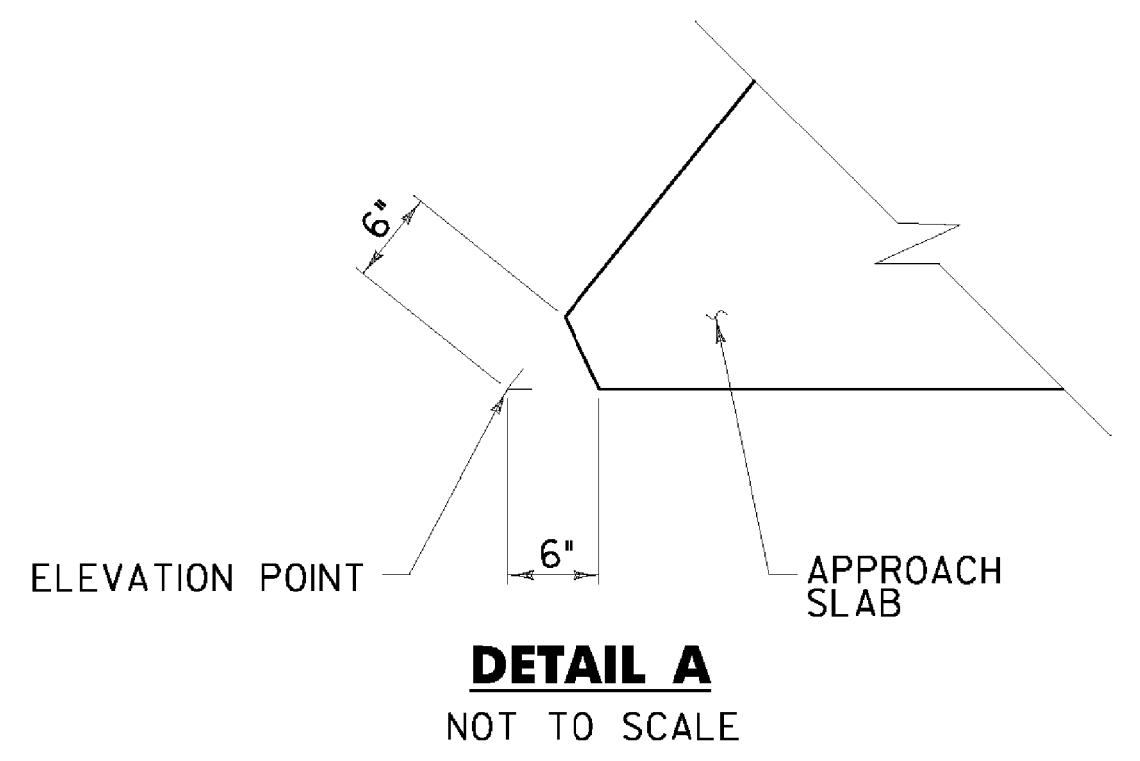
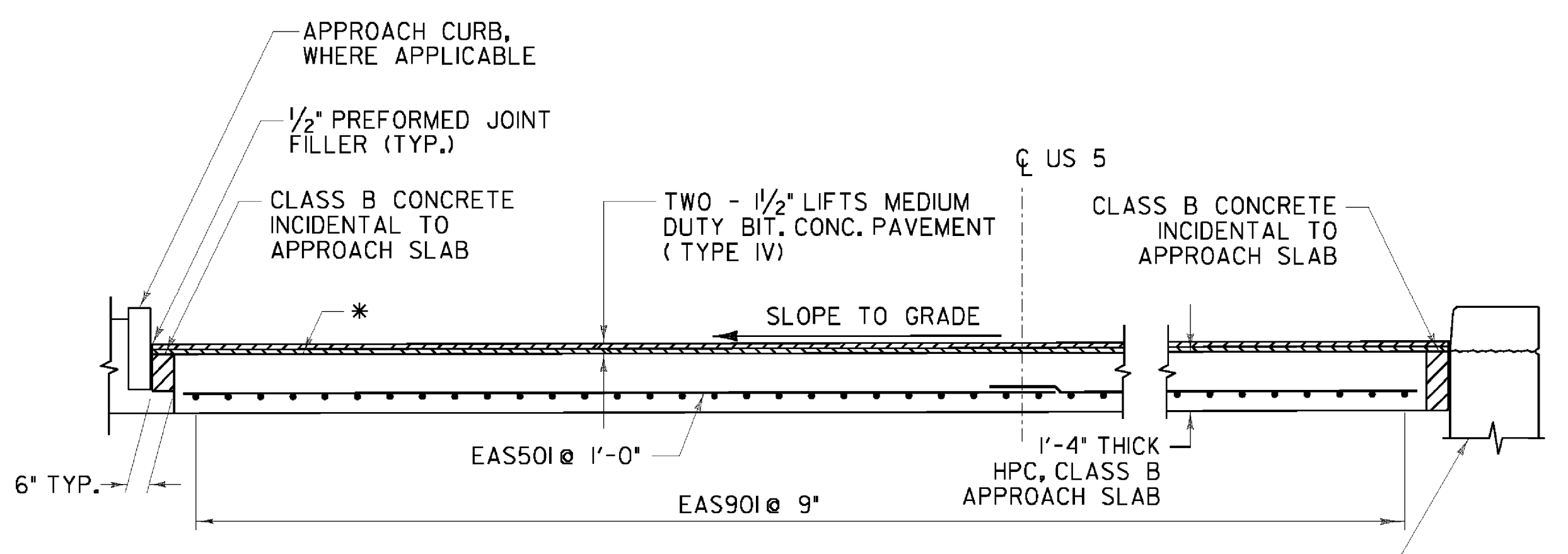


**APPROACH SLAB #1**  
 SCALE 1/4" = 1'-0"  
 1 0 2 4 6

**APPROACH SLAB #2**  
 SCALE 1/4" = 1'-0"  
 1 0 2 4 6



**TYPICAL APPROACH SLAB CROSS SECTION**  
 NOT TO SCALE



**SECTION B-B**  
 NOT TO SCALE

\* EMULSIFIED ASPHALT AS DIRECTED BY ENGINEER  
 DO NOT APPLY BARRIER MEMBRANE TO TOP  
 OF APPROACH SLAB

<b>STATE OF VERMONT AGENCY OF TRANSPORTATION</b>	
Town Of	PUTNEY
Highway No.	U.S. ROUTE 5 OVER I-91
Bridge No.	19A
Log Sta.	
Surv. Sta.	
<b>APPROACH SLAB PLAN AND DETAILS</b>	
Designed By	T. KNIGHT
Checked By	T. KNIGHT
Date	06/09
Drawn By	R. WALKER
Bridge Design Supervisor	C. BOGUE
Date	06/09
PROJECT	PUTNEY
PROJECT NO.	IM 091-(131)
CAD Drawing Name:	...Plot Files\39 293816\091\06/09/09
Bridge Sheet No.	Sheet 39 of 75

