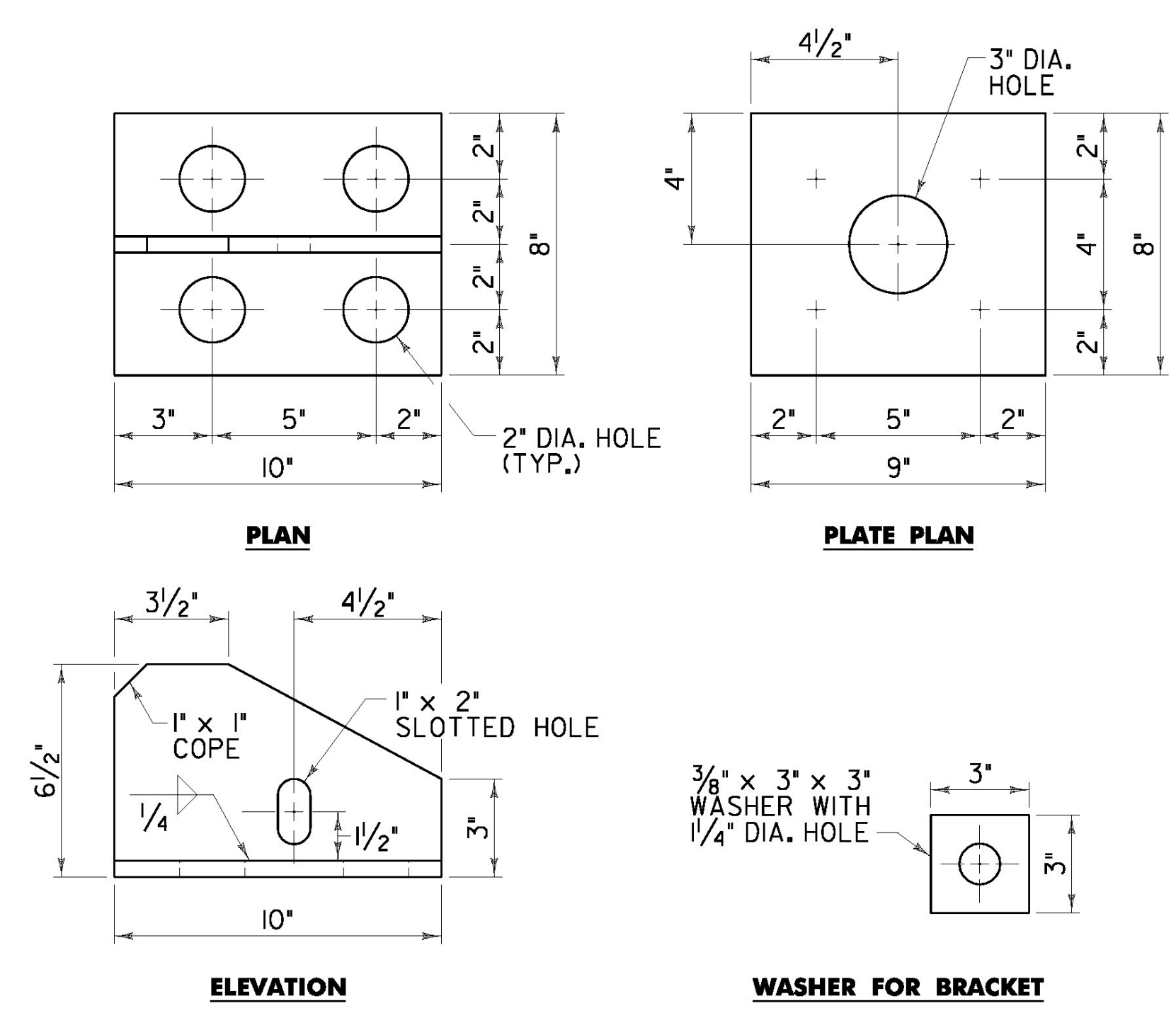
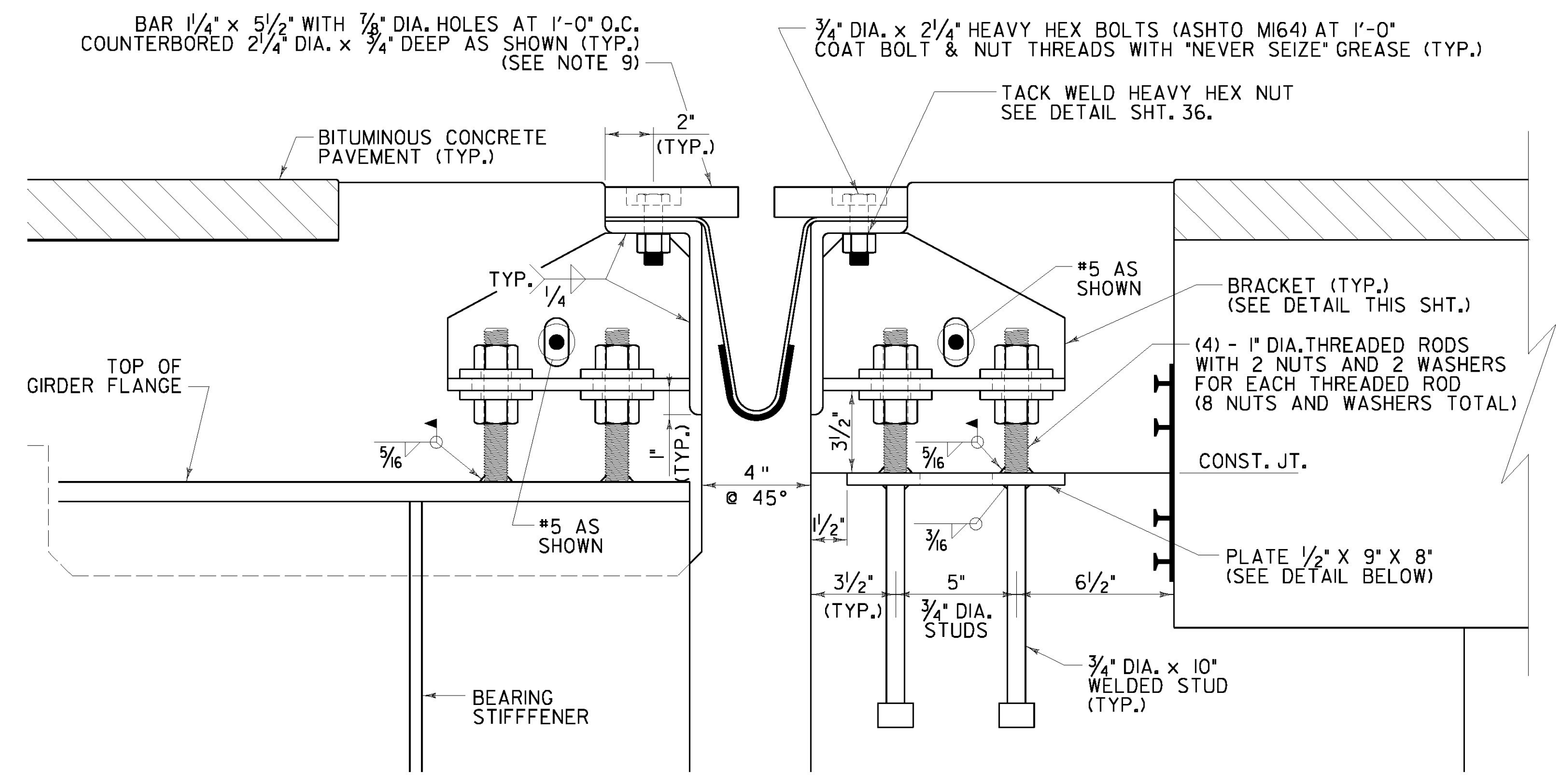


TYPICAL SECTION BETWEEN GIRDERS
(NORMAL TO ϕ BEARING)

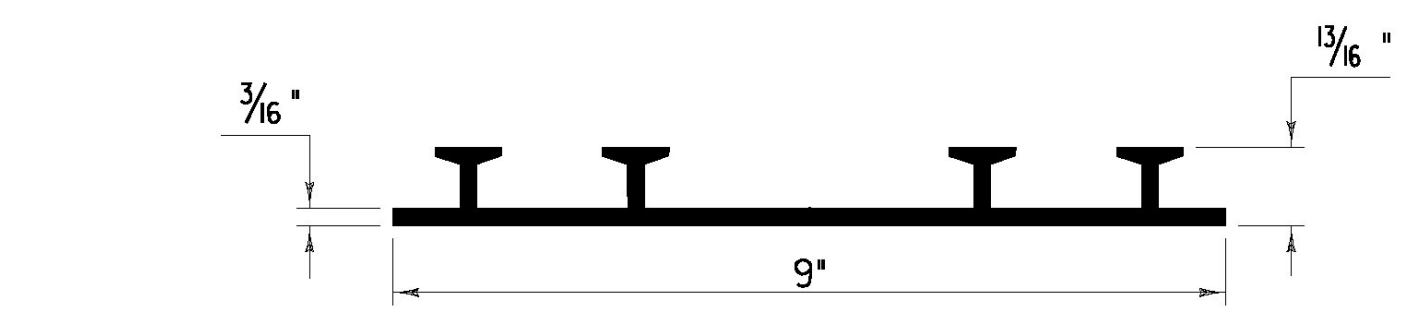


NOTE: ALL PLATES SHALL BE 1/2" THICK U.N.O.

BRACKET DETAILS



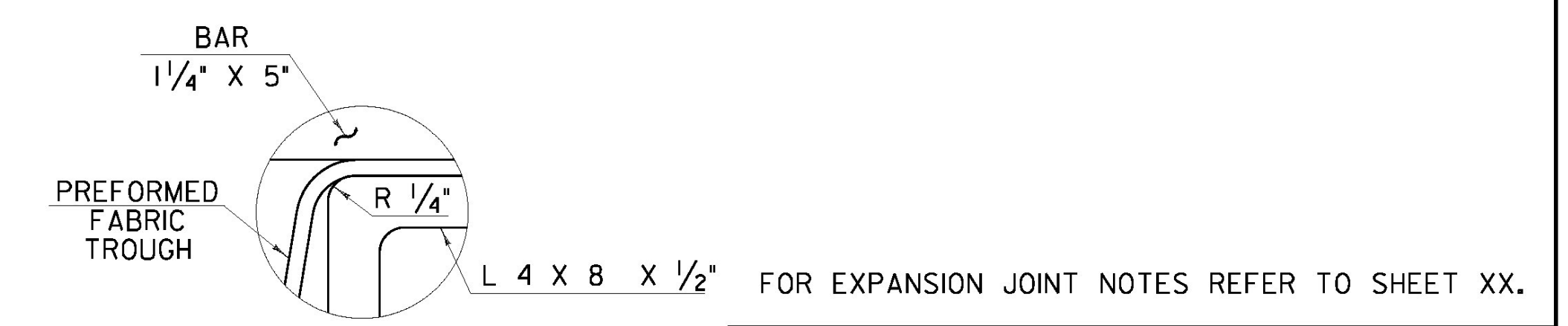
TYPICAL SECTION AT GIRDERS
(NORMAL TO ϕ BEARING)



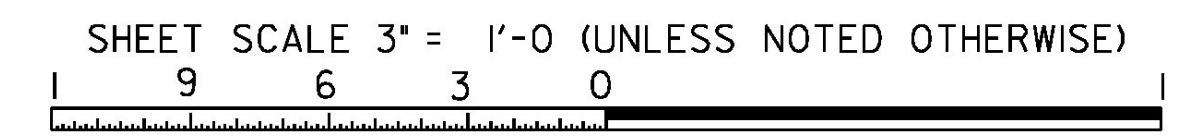
P. V. C. WATERSTOP FOR CONSTRUCTION JOINTS

THE COSTS FOR P. V. C. WATERSTOP SHALL BE INCLUDED IN THE UNIT PRICE BID FOR CONCRETE. OTHER CONFIGURATIONS MAY BE USED UPON APPROVAL OF THE STRUCTURES ENGINEER.

TEMP	"A" DIST
0° F	1 5/8"
15° F	1 1/16"
30° F	1 3/16"
45° F	1"
60° F	13/16"
75° F	9/16"
90° F	7/8"
105° F	3/16"



DETAIL "A"
NOT TO SCALE



**STATE OF VERMONT
AGENCY OF TRANSPORTATION**

Town Of	PUTNEY	Bridge No.	19A
Highway No.	U.S. ROUTE 5	Log Sta.	
		Surv. Sta.	
U.S. ROUTE 5 OVER I-91			
EXPANSION JOINT DETAILS 1			
Designed By	T. KNIGHT	Drawn By	T. KNIGHT
Checked By	Date	Bridge Design Supervisor	
G. BOGUE	06/09	G. BOGUE	Date 06/09
PROJECT	PUTNEY	PROJECT NO.	NH F019-I(5)
CAD Drawing Name:	...35 z93a148Expj12.plt	Date:	7/8/2009
Bridge Sheet No.		Sheet	35 of 75

