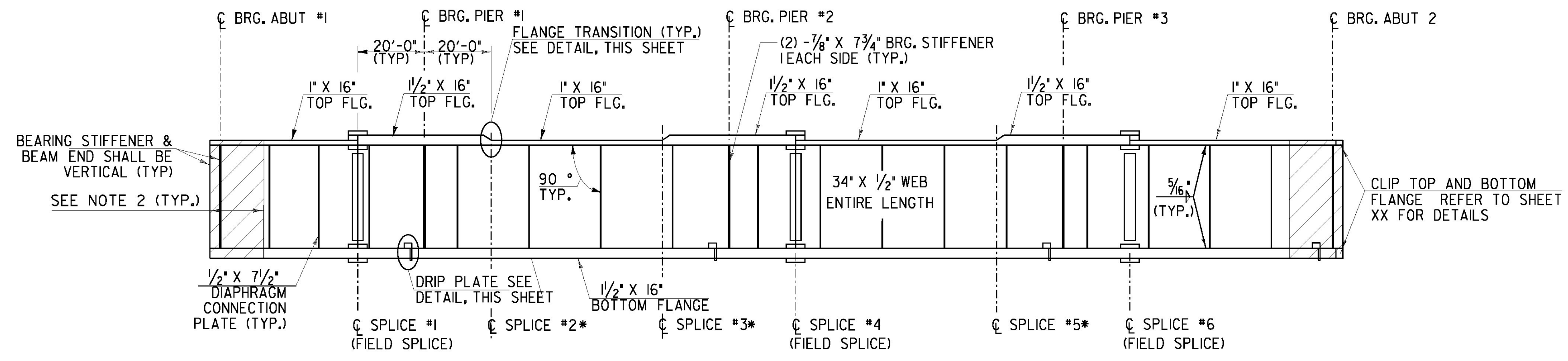


FRAMING PLAN

SCALE 3/32" = 1'-0"
 10 4 8 12 16

GIRDER NO.	ANGLE "A"	ANGLE "B"	ANGLE "C"	ANGLE "D"	ANGLE "E"
1	51° 31' 55"	48° 34' 01"	44° 09' 58"	39° 22' 53"	35° 34' 40"
2	51° 14' 07"	48° 14' 14"	43° 46' 52"	38° 55' 31"	35° 03' 13"
3	50° 56' 01"	47° 54' 05"	43° 23' 19"	38° 27' 31"	34° 30' 56"
4	50° 37' 35"	47° 33' 34"	42° 59' 16"	37° 58' 51"	33° 57' 46"
5	50° 18' 50"	47° 12' 40"	42° 34' 42"	37° 29' 29"	33° 23' 40"



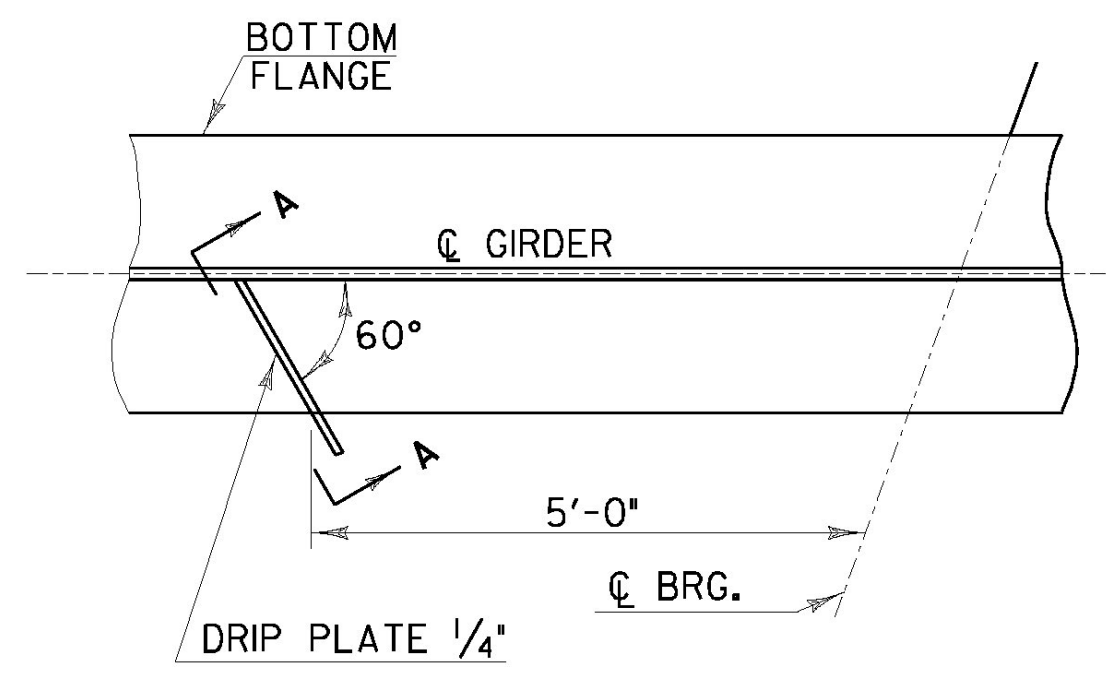
GIRDER PLATE SIZES

NOT TO SCALE

*OPTIONAL FIELD SPLICE, SEE NOTE 4

NOTES:

- FOR DIAPHRAGM LAYOUT AND GIRDER DIMENSIONS REFER TO SHEET 29.
- ENDS OF GIRDERS SHALL BE PAINTED AND GREASED IN ACCORDANCE WITH SUBSECTION 513.06 (d) OF THE STANDARD SPECIFICATIONS.
- FOR BOLTED FIELD SPLICE DETAILS, REFER TO SHEET XX. SPLICES #2, #3 AND #5 ARE OPTIONAL FIELD SPLICES. THE CONTRACTOR MAY ELECT TO PROVIDE A BOLTED FIELD SPLICE AT THESE LOCATIONS IN PLACE OF SPLICES #1, #4 AND #6. A MAXIMUM OF THREE FIELD SPLICES PER GIRDER WILL BE ALLOWED.
- FOR RANGE OF TENSION, REFER TO SHEET 29. ALL FLANGE AND WEB PLATES WITHIN THE RANGE OF TENSION SHALL BE CHARPY V NOTCH TESTED.
- ALL DIAPHRAGM MEMBERS SHALL BE CHARPY V NOTCH TESTED FOR DIAPHRAGM DETAILS REFER TO SHEET 31.
- FOR CAMBER AND DEAD LOAD DEFLECTION DIAGRAMS, SEE SHEET 30.
- THE ENDS OF GIRDERS AND BEARING STIFFENERS SHALL BE VERTICAL UNDER DEAD LOAD.

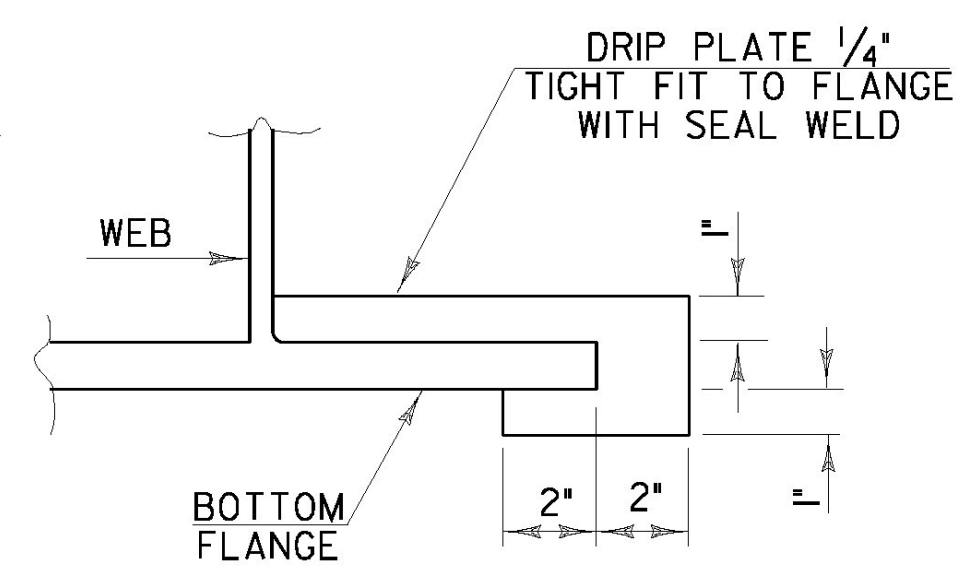


PLAN

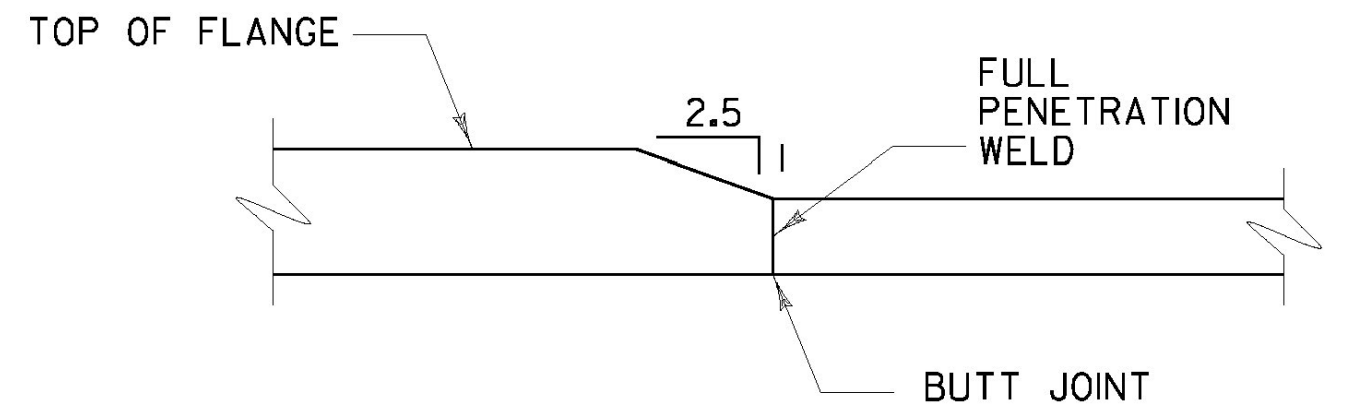
NOTE: DRIP PLATES SHALL BE PLACED ON OUTSIDE EDGE OF FASCIA GIRDERS ON THE HIGH SIDE OF ALL PIERS AND ABUTMENTS.

DRIP PLATE DETAIL

NOT TO SCALE



SECTION A - A



FLANGE THICKNESS TRANSITION DETAIL

NOT TO SCALE

**STATE OF VERMONT
 AGENCY OF TRANSPORTATION**

Town Of **PUTNEY** Bridge No. **19A**
 Highway No. **U.S. ROUTE 5** Log Sta.
 Surv. Sta.
U.S. ROUTE 5 OVER I-91

FRAMING PLAN

Designed By **G. BOGUE** Drawn By **T. KNIGHT**
 Checked By **G. BOGUE** Date **06/09** Bridge Design Supervisor **G. BOGUE** Date **07/09**

PROJECT **PUTNEY** PROJECT NO. **NH F019-1(5)**
 CAD Drawing Name: **... \Plot Files\28 2938108 f019-1(5) 7/8/2009**
 Bridge Sheet No. Sheet **28** of **75**

