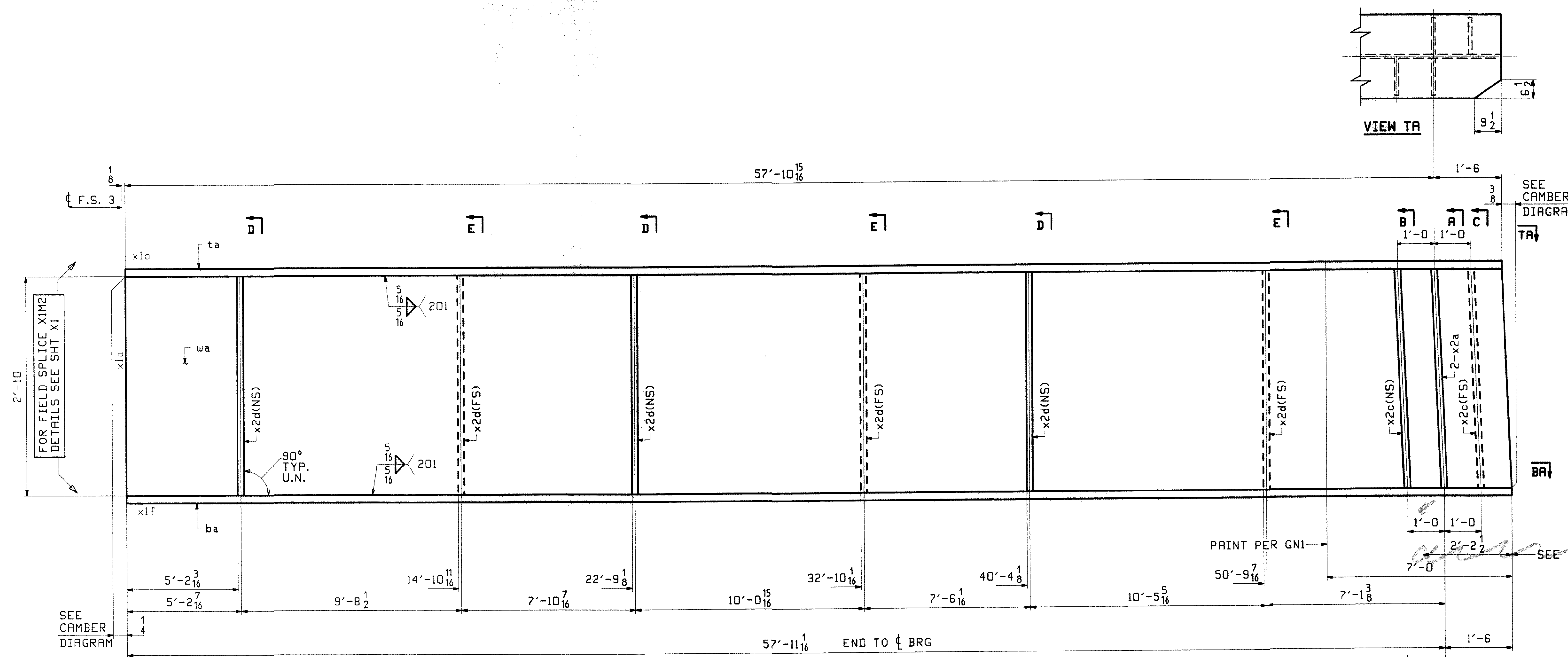


| ABM INFO | | BILL OF MATERIAL | | | | JOB NO. | | DRAWING | |
|----------|------|------------------|-----|------|----------------|---------------------|------------|---------|-------|
| PAGE | LINE | MARK | QTY | MARK | MATERIAL | LENGTH FT INCHES | REMARKS | WT | P |
| | | 19G4D | 1 | | GIRDER | | | | 11946 |
| 4 | Q | | 1 | wa | PL 1/2 x 34 | 59'-5 5/16 | M270-50WT2 | | |
| 2 | U | | 1 | ta | PL 1/2 x 16 | 59'-4 1/16 | M270-50WT2 | | |
| 1 | G | | 1 | ba | PL 1/2 x 16 | 59'-5 1/16 | M270-50WT2 | | |
| 6 | K | | 2 | x2a | PL 7/8 x 7 1/2 | 2'-10" | NIE | | |
| 6 | L | | 2 | x2c | PL 1/2 x 7 1/2 | 2'-10" | | | |
| 6 | L | | 6 | x2d | PL 1/2 x 7 1/2 | 2'-10" | | | |

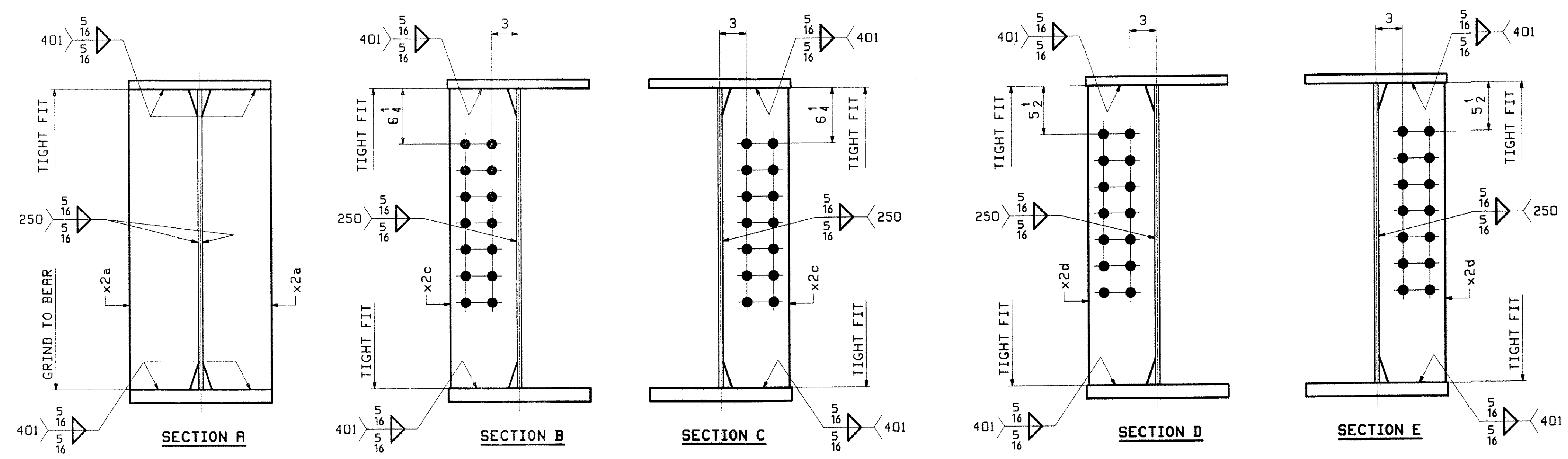
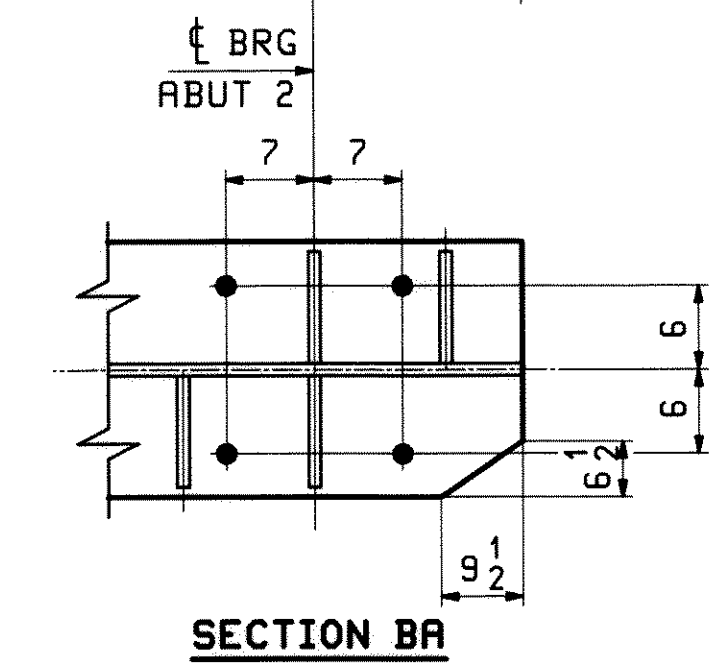
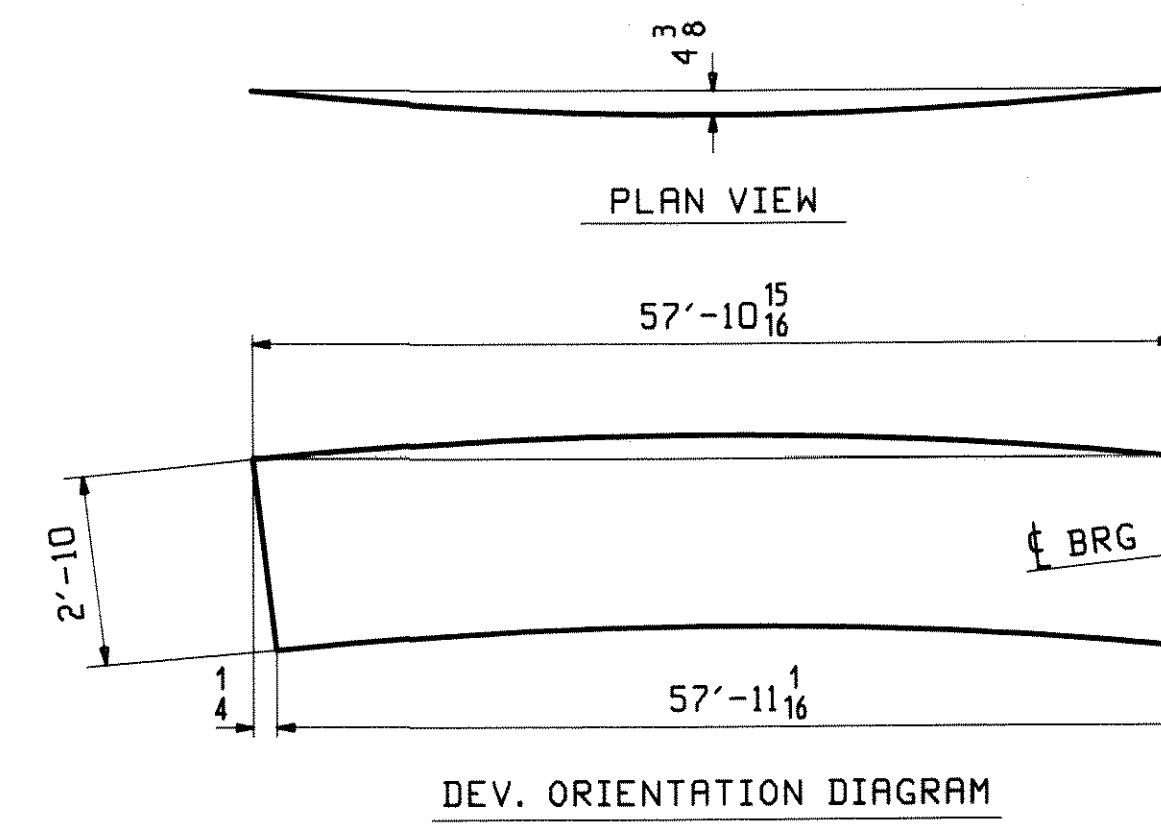


NOTE A:
NO PRINT BOTTOM AND EDGES OF BOTTOM FLANGE

SEE NOTE A

ONE - GIRDER - 19G4D (DEV)

FOR FIELD SPLICE & STANDARD DETAILS SEE X SHEETS
FOR CAMBER DIAGRAM SEE SHEET C2
FOR FLANGE DIAGRAM SEE SHEET F1
FOR GENERAL NOTES SEE SHEET GNI



DATE: 2/1/10
SIGNATURE: [Signature]
PROVIDED BY: CASCO BAY STEEL STRUCTURES, INC.
DESIGN: [Signature]
CHECKED: [Signature]
DATE: 2/1/10

| REV. | DATE | REMARKS | OWN | CHK | APVL |
|---|------|------------------------|-------------|-----|------------------------------|
| 0 | | | | | JAN 29 2010 |
| MATERIAL: | | SURFACE PREP. & PAINT: | HOLES: | | SHOP |
| M270-50W (UN) | | SEE GNI | 15/16" U.N. | | |
| DESCRIPTION: GIRDER - 19G4D | | | | | |
| CASCO BAY STEEL STRUCTURES, INC. 75 SPRING HILL ROAD SACO, MAINE 04072 PHONE (207) 282-7360 FAX: (207) 282-1179 | | | | | |
| STRUCTURE: U.S. 5 over I-91 Bridge No. 19A Putney County of Windham | | | | | DRAWN: WJF CHKD: DO |
| LOCATION: Putney | | | | | JOB NO. |
| PROJ NO. IM 091-1(31) | | | | | 438 |
| CUSTOMER: VT AOT | | | | | |

FILE: I:\21-22-2010\19G4D.dwg
 PLOT: 1/21/10 10:00:00 AM
 PLOTTER: HP DesignJet 245C