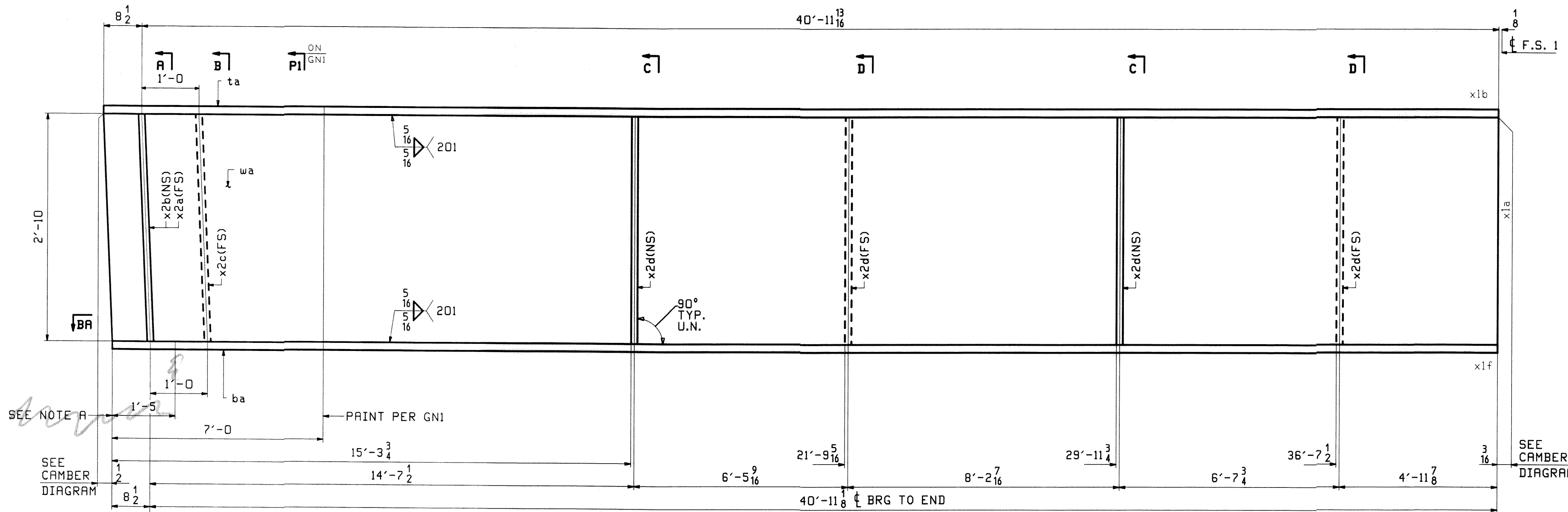


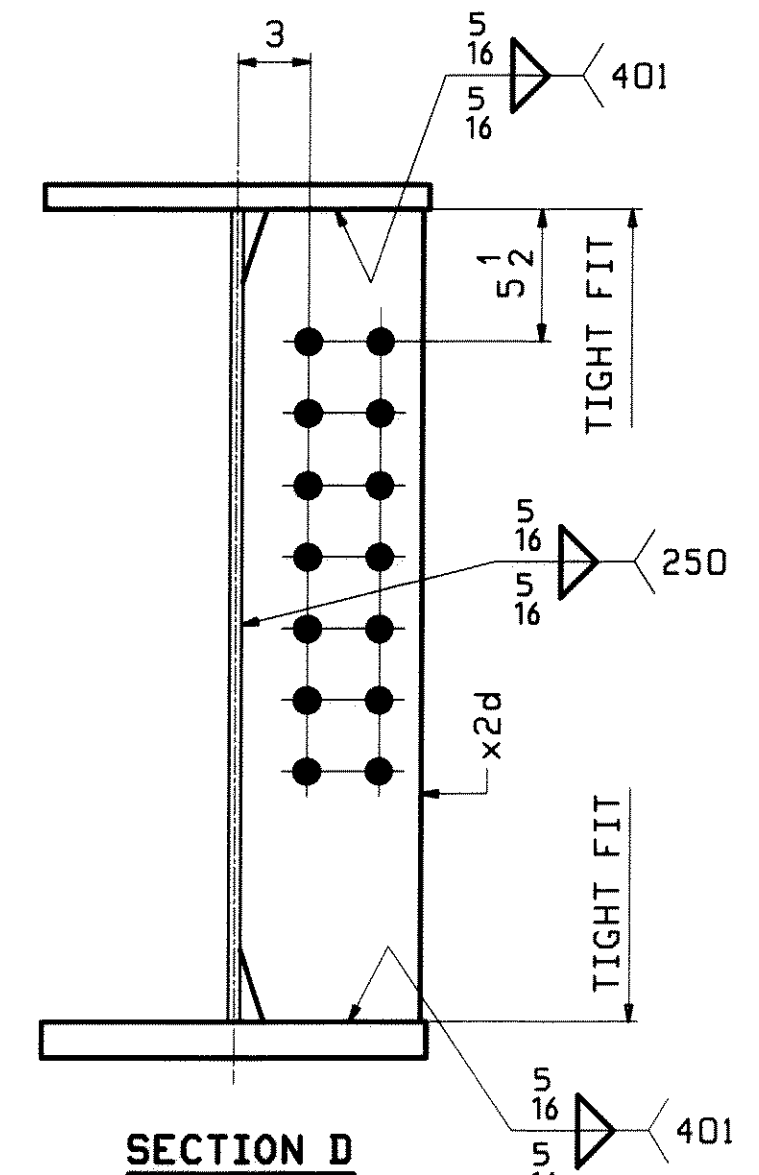
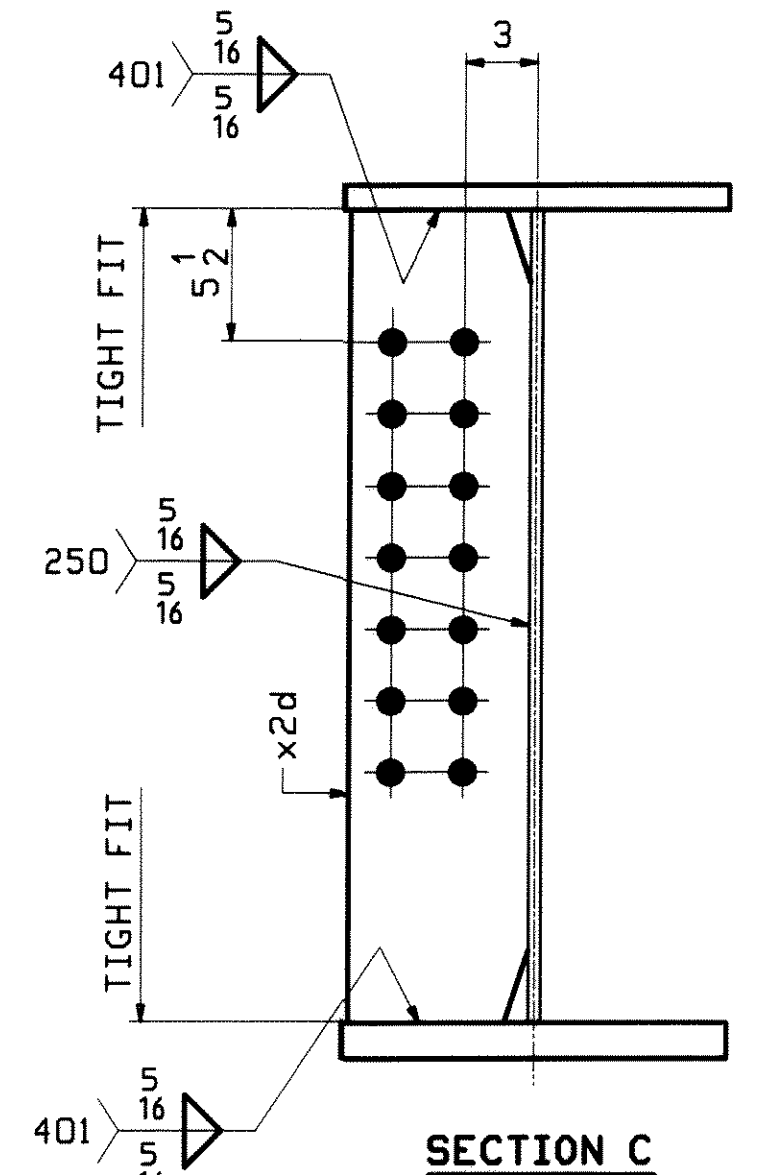
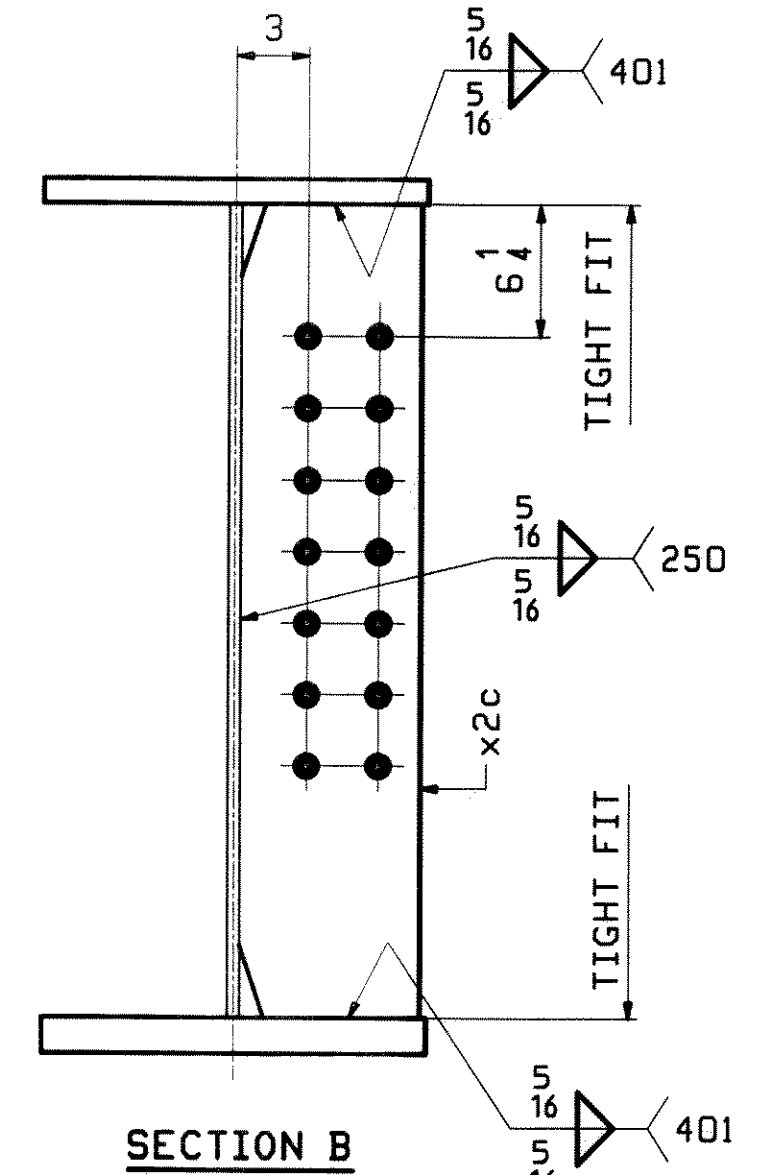
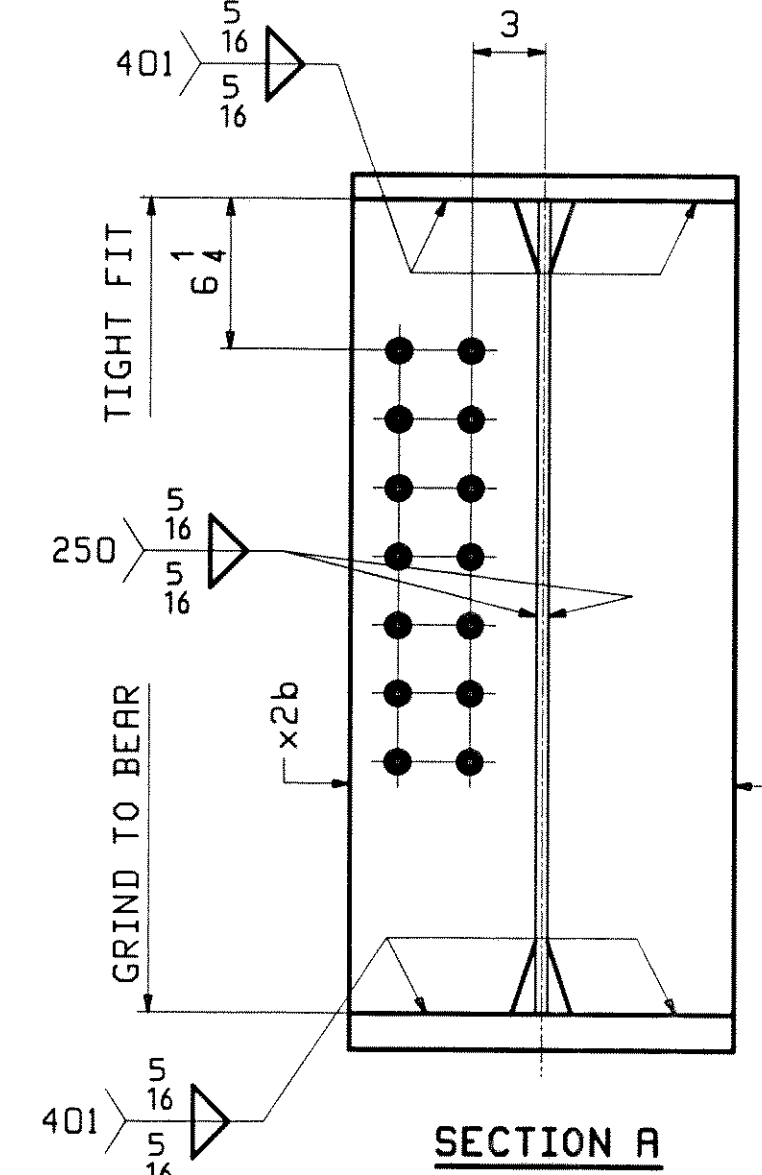
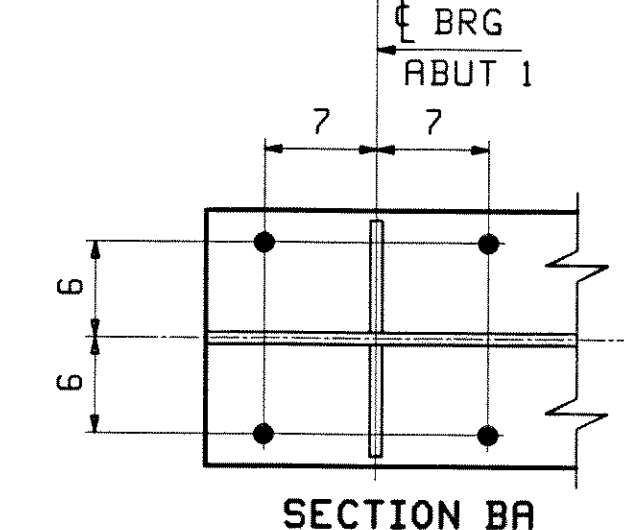
ABM INFO		BILL OF MATERIAL				JOB NO.		DRAWN	
PAGE	LINE	MARK	QTY	MARK	MATERIAL	LENGTH FT	INCHES	REMARKS	WT
		2G2A	1		GIRDER				8394
5	N		1	wa	PL $\frac{1}{2}$ x 34	41	$8\frac{5}{16}$	M270-50HT2	
3	O		1	ta	PL 1x16	41	$8\frac{5}{16}$	M270-50HT2	
2	C		1	ba	PL $\frac{1}{2}$ x 16	41	$7\frac{5}{8}$	M270-50HT2	
6	K		1	x2a	PL $\frac{7}{8}$ x 7 $\frac{3}{4}$	2	10	MIE	
6	K		1	x2b	PL $\frac{7}{8}$ x 7 $\frac{3}{4}$	2	10	MIE	
6	L		1	x2c	PL $\frac{1}{2}$ x 7 $\frac{1}{2}$	2	10		
6	L		4	x2d	PL $\frac{1}{2}$ x 7 $\frac{1}{2}$	2	10		



FOR FIELD SPLICE XIMI
DETAILS SEE SHT XI

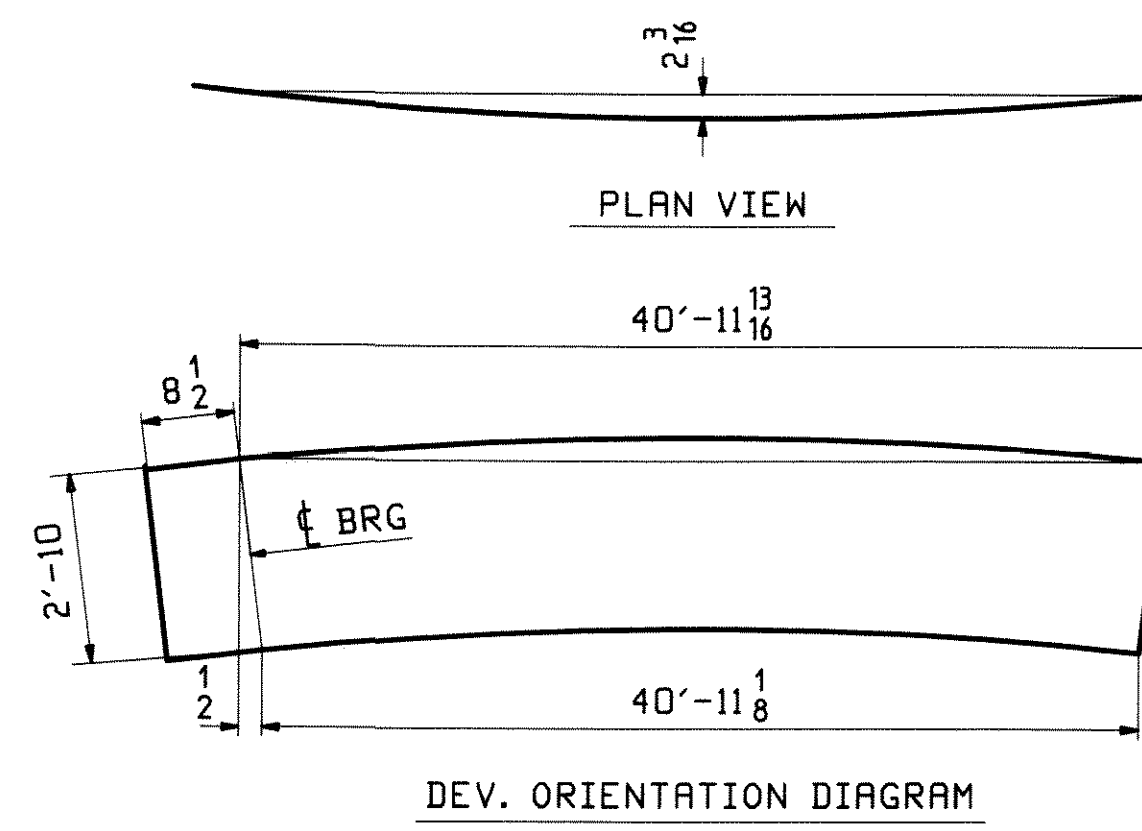
SEE NOTE A
SEE CAMBER
DIAGRAM

SEE CAMBER
DIAGRAM



ONE - GIRDER - 2G2A (DEV)

FOR FIELD SPLICE & STANDARD DETAILS SEE X SHEETS
FOR CAMBER DIAGRAM SEE SHEET C1
FOR FLANGE DIAGRAM SEE SHEET F1
FOR GENERAL NOTES SEE SHEET GNI



DATE: 2/9/10

APPROVED: [Signature]

FOR FIELD SPLICE XIMI
DETAILS SEE SHT XI

NOTE A:
NO PAINT BOTTOM AND EDGES OF BOTTOM FLANGE.

REV.	DATE	REMARKS	DWN	CHK	APVL
0					JAN 2010
MATERIAL:		SURFACE PREP. & PAINT:		HOLES:	
M270-50W (UN)		SEE GNI		15 1/16 U.N.	
DESCRIPTION: GIRDER - 2G2A					
CASCO BAY STEEL STRUCTURES, INC.					
75 SPRING HILL ROAD			SACO, MAINE 04072		
PHONE (207) 282-7360			FAX. (207) 282-1179		
STRUCTURE: U.S. 5 over I-91					DRAWN:
Bridge No. 19A					WJF
Putney					CHKD:
County of Windham					DO
LOCATION: Putney					JOB NO.
PROJ NO. IM 091-1(31)					438
CUSTOMER: VT AOT					