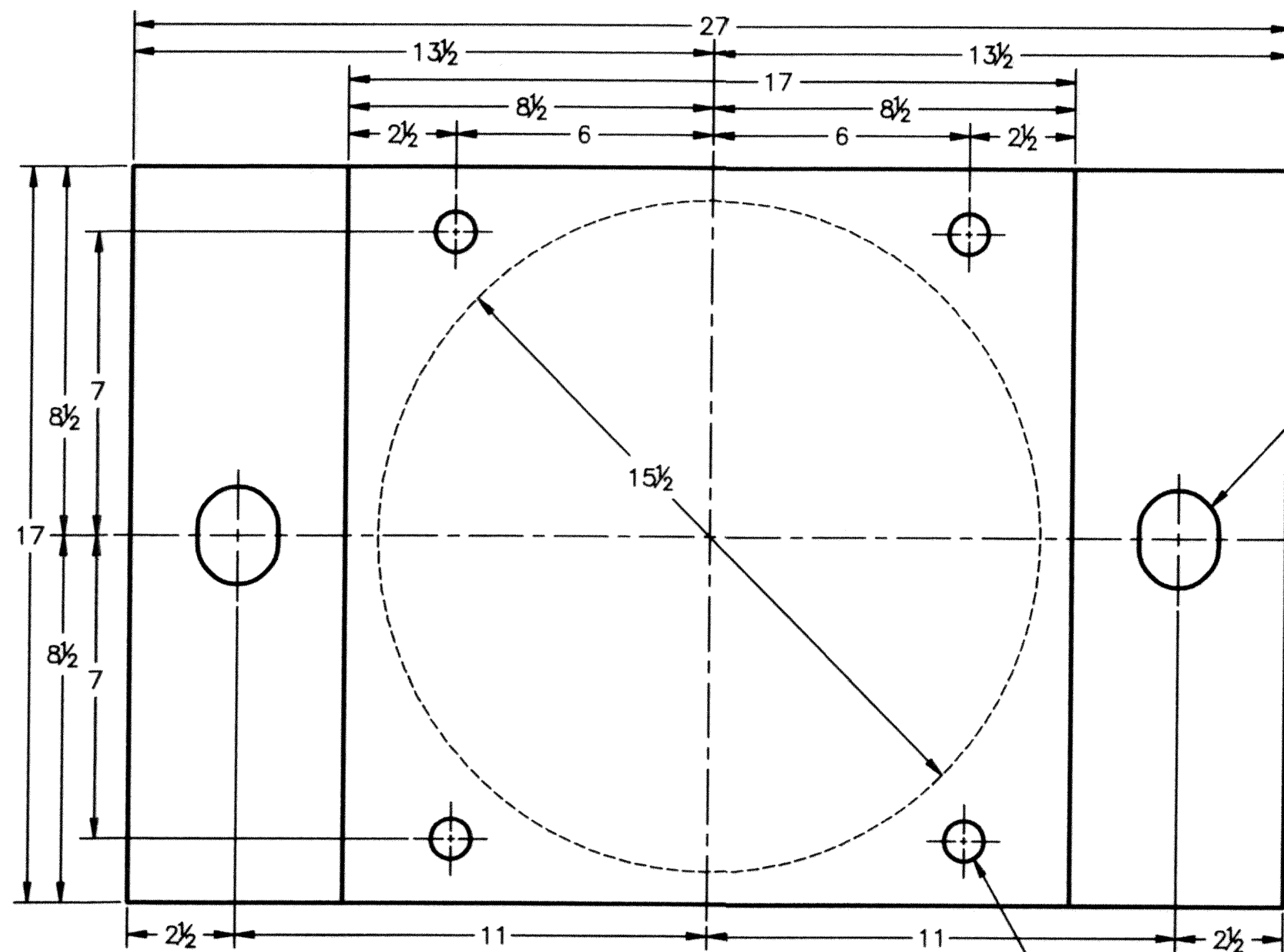
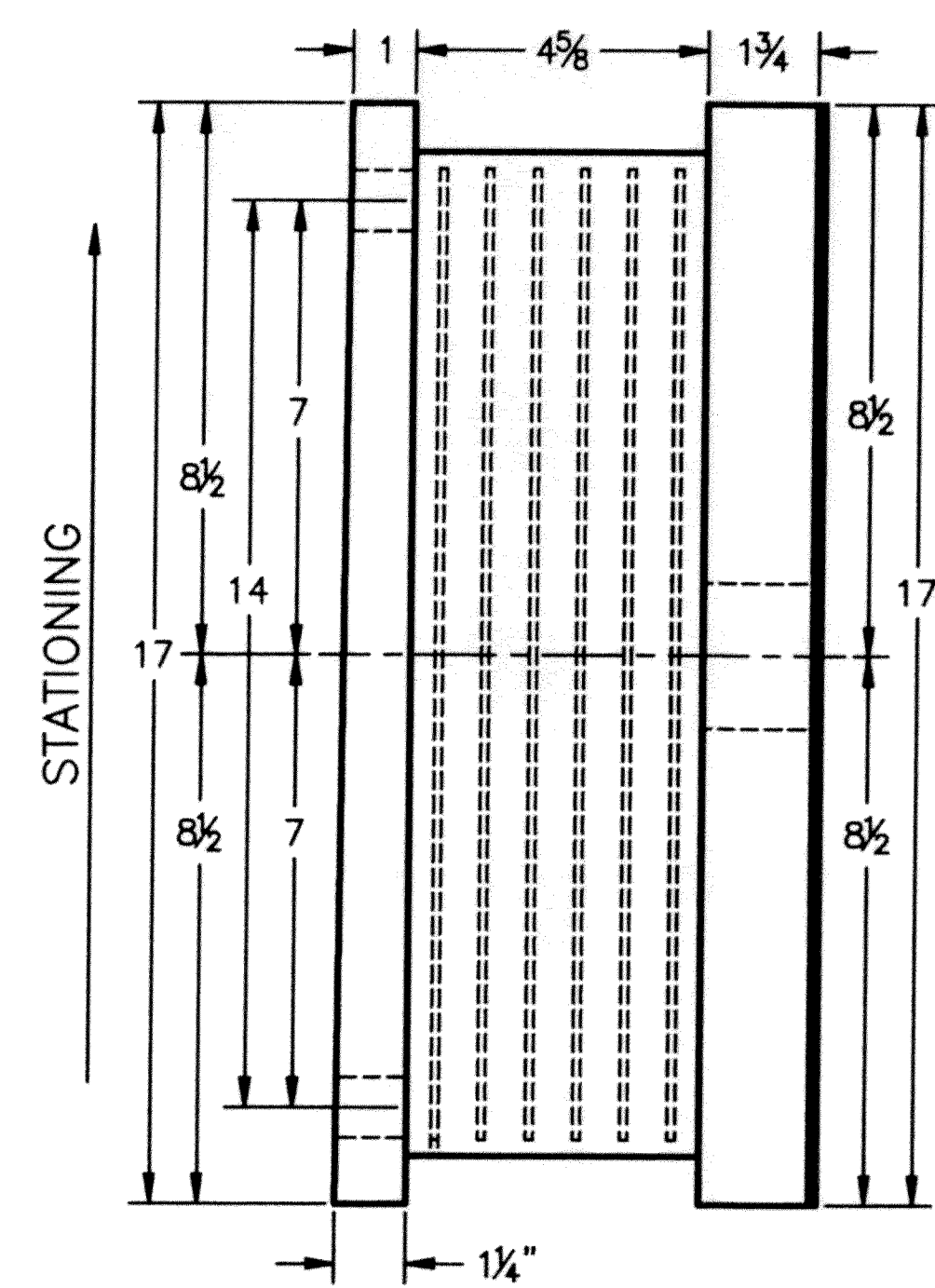


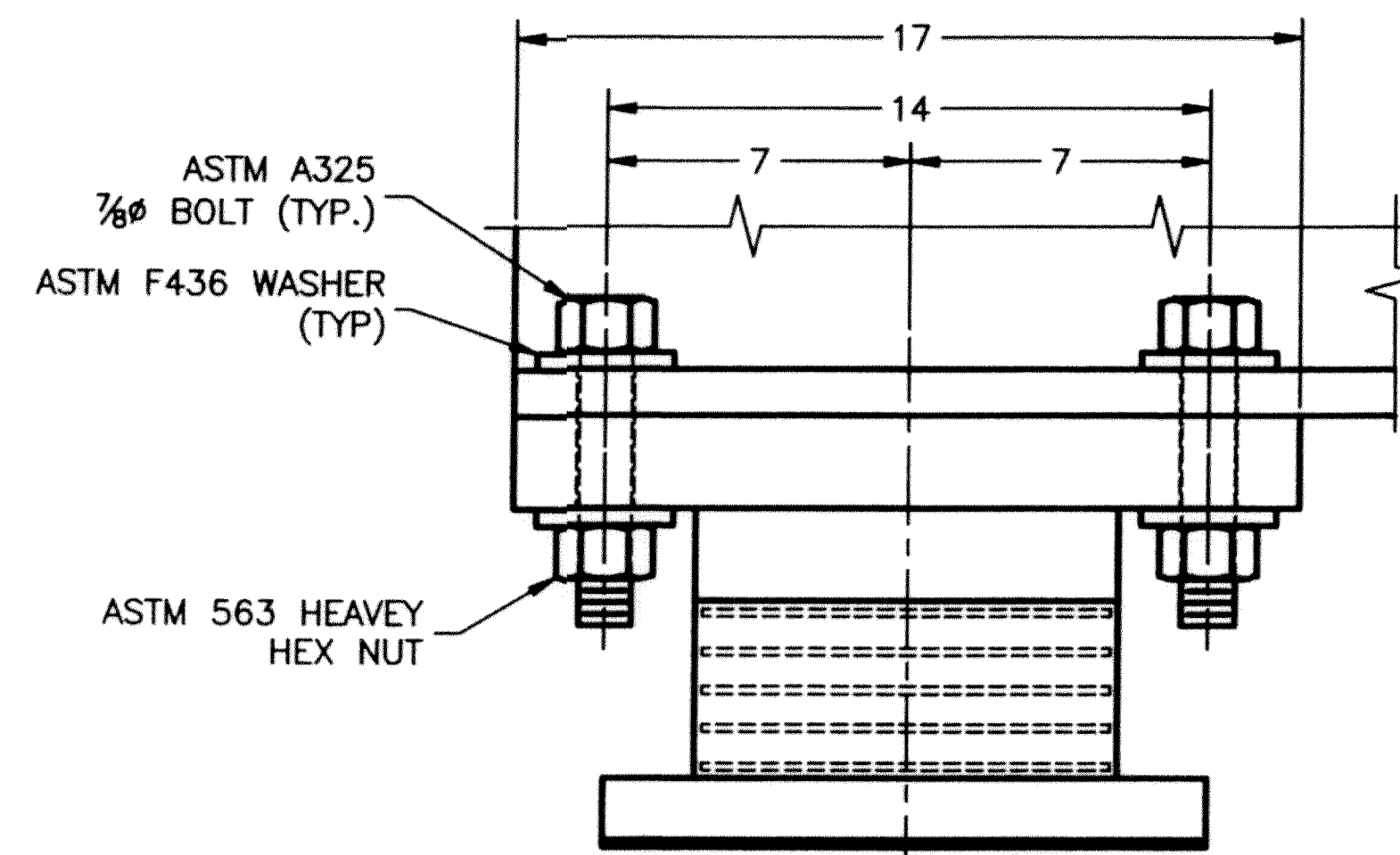
REVISIONS				
ZONE	REV	DESCRIPTION	DATE	APPROVED
--	A	PER ENGINEER'S MARK	2/23/10	C.A.M.



PLAN VIEW
 QTY REQ'D = 10 ASSY.
 PIERS 1 & 3

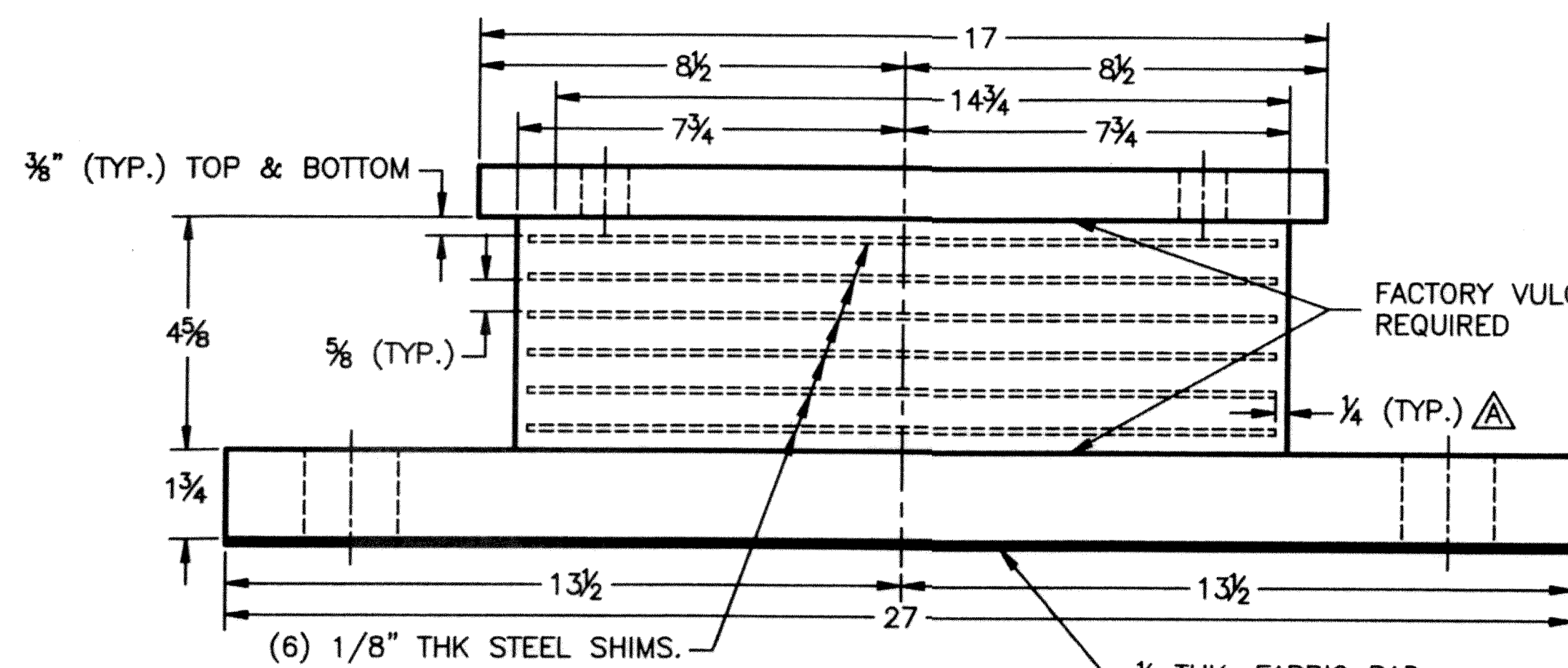


STATIONING

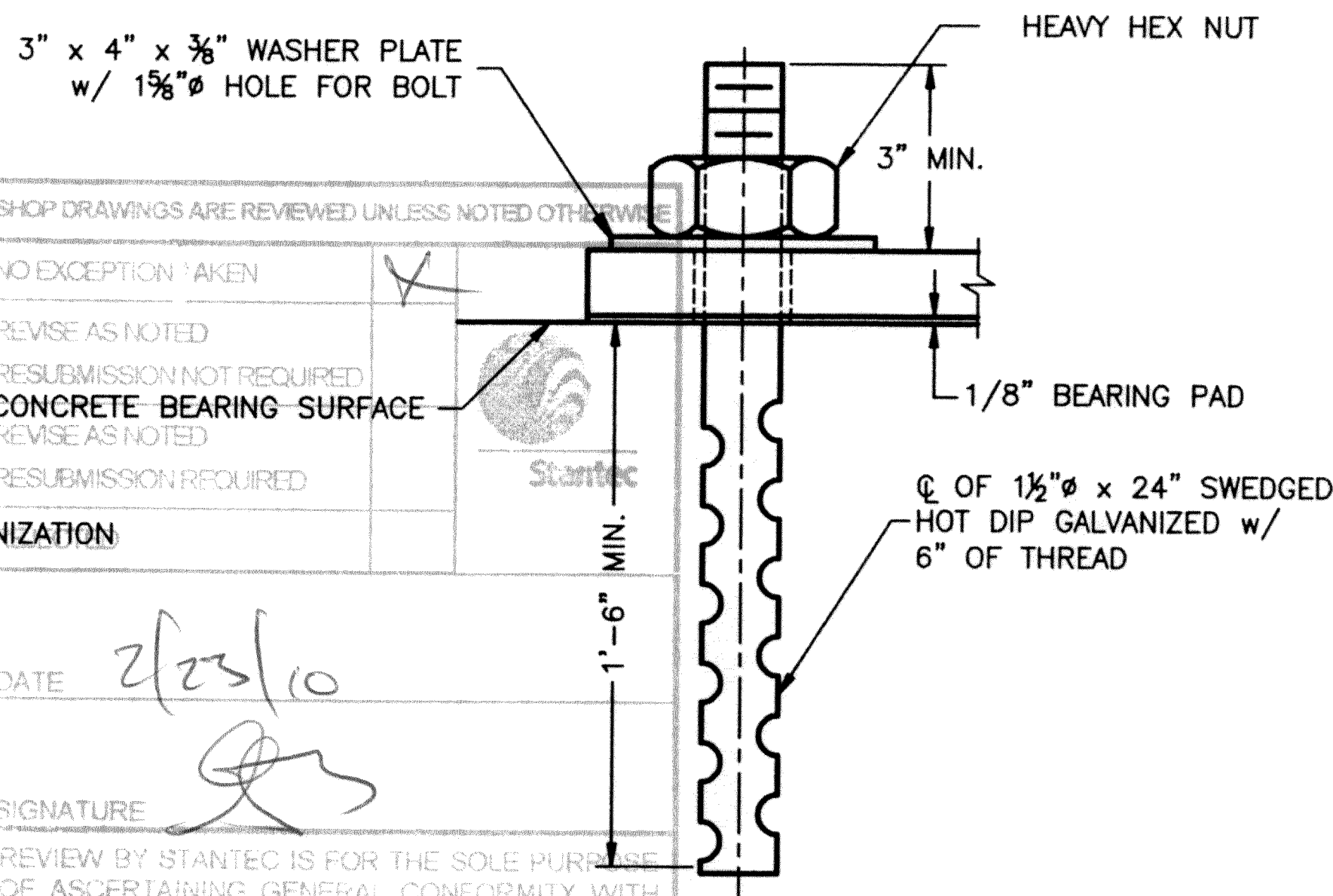


SOLE PLATE TO FLANGE CONNECTION DETAIL
 (ALL BEARINGS)

** FOR NOTES SEE SHEET 2 OF 3



ELEVATION VIEW



ANCHOR BOLT DETAIL

QTY. REQ'D = 20, 2 PER BEARING

SHOP DRAWINGS ARE REVIEWED UNLESS NOTED OTHERWISE

NO EXCEPTION TAKEN	<input checked="" type="checkbox"/>
REVISE AS NOTED	<input type="checkbox"/>
RESUBMISSION NOT REQUIRED	<input type="checkbox"/>
CONCRETE BEARING SURFACE	<input checked="" type="checkbox"/>
REVISE AS NOTED	<input type="checkbox"/>
RESUBMISSION REQUIRED	<input type="checkbox"/>
DATE	2/23/10
SIGNATURE	<i>[Signature]</i>

REVIEW BY STANTEC IS FOR THE SOLE PURPOSE OF ASCERTAINING GENERAL CONFORMITY WITH DESIGN. CONTRACTOR IS RESPONSIBLE FOR DIMENSIONS, FABRICATION AND CONSTRUCTION METHODS, COORDINATION OF DETAIL DESIGN OF COMPONENTS, AND WORKS OR OMISSIONS ON SHOP DRAWINGS.

VERMONT AGENCY OF TRANSPORTATION
 PROPOSED IMPROVEMENT BRIDGE PROJECT
 TOWN OF PUTNEY, COUNTY OF WINDHAM
 US RT. 5 FAS (MAJOR COLLECTOR), BRIDGE 19A

EXPANSION ELASTOMERIC BEARING DETAIL

AMSCOT

STRUCTURAL PRODUCTS CORP.

DOVER, NJ

JOB # 3383

SCALE: N.T.S.	CHECKED: B.F.	DRAWN BY: C.A.M.
DATE: 1/29/10	REVISION: A	

FOR: J.A. MCDONALD, INC.

DWG NO: JAM10A3RA SHEET NO. 3 OF 3