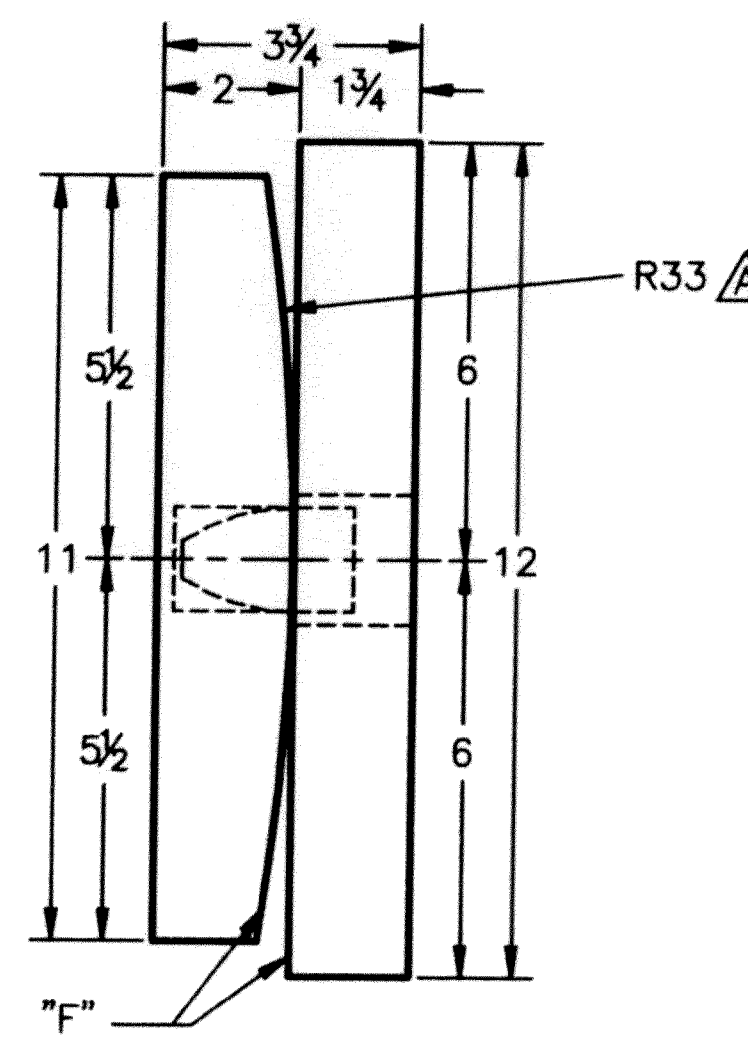
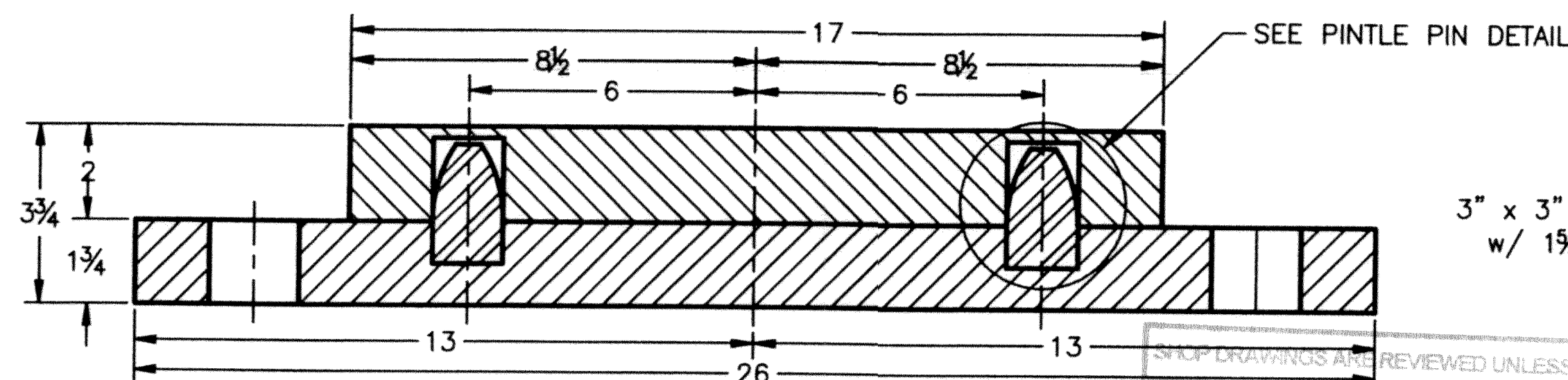


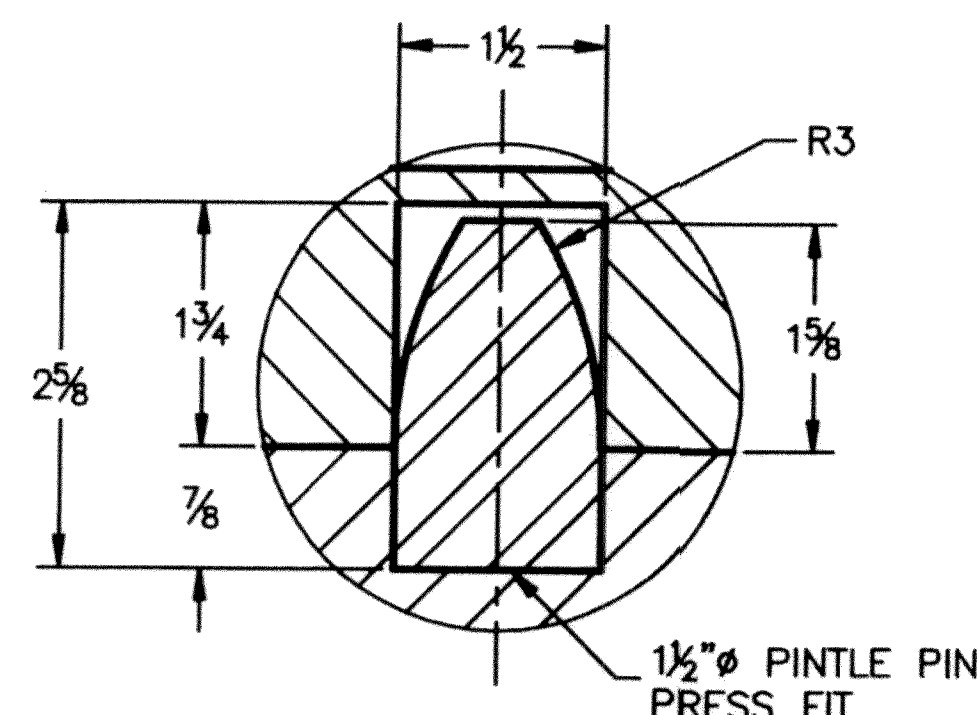
**PLAN VIEW**  
QTY REQ'D = 5 ASSY.  
PIER 2



**SIDE VIEW**



**ELEVATION VIEW**



**PINTLE PIN DETAIL**

NO EXCEPTION TAKEN

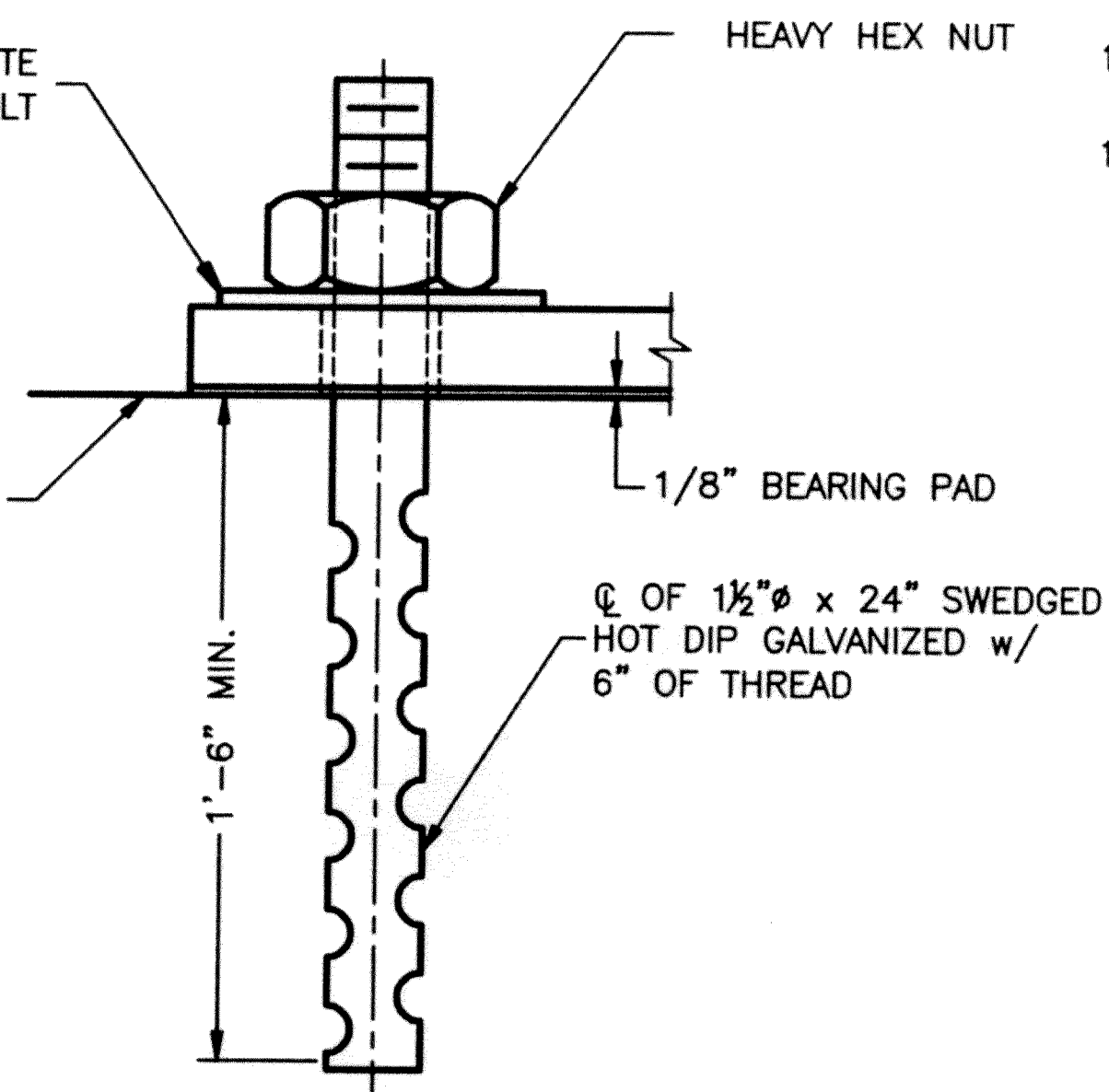
REVISIONS:

NO EXCEPTION TAKEN	✓
REVISE AS NOTED	
RESUBMISSION NOT REQUIRED	
REVISE AS NOTED	
RESUBMISSION REQUIRED	
REJECTED	

DATE: 2/23/10

SIGNATURE: [Signature]

REVIEW BY STANTEC IS FOR THE SOLE PURPOSE OF ASCERTAINING GENERAL CONFORMITY WITH DESIGN. CONTRACTOR IS RESPONSIBLE FOR DIMENSIONS, FABRICATION AND CONSTRUCTION METHODS, COORDINATION OF SUB-TRADES, DETAIL DESIGN OF COMPONENTS, AND ERRORS OR OMISSIONS ON SHOP DRAWINGS.



**ANCHOR BOLT DETAIL**  
QTY. REQ'D = 10, 2 PER BEARING

REVISIONS				
ZONE	REV	DESCRIPTION	DATE	APPROVED
--	A	PER ENGINEER'S MARK	2/23/10	C.A.M.

**NOTES:**

- BEARINGS TO BE MANUFACTURED ACCORDING TO AASHTO STANDARD SPECIFICATIONS FOR HIGHWAY BRIDGES, 17th. EDITION, 2002.
- THE BEARINGS ARE DESIGNED SO THAT THE SUPERSTRUCTURE MAY BE ERECTED WHEN THE AMBIENT AIR TEMPERATURE IS WITHIN THE RANGE OF 20° F. TO 70° F.
- ALL STEEL IN BEARINGS SHALL BE ASTM A-709 GRADE 36.
- ALL STEEL PRODUCED IN THE U.S.A.
- CONTACT PETER SOMOGYI, COORDINATOR.
- TOLERANCES: THICKNESS -0+1/16"  
PLAN -0+1/16"
- MANUFACTURING FACILITY LOCATION:  
AMSCOT STRUCTURAL PRODUCTS INC.  
241 EAST BLACKWELL STREET  
DOVER, NJ 07801
- ALL DIMENSIONS ARE IN INCHES.
- ALL BEARING DEVICES SHALL BE GALVANIZED AS PER STANDARD SPECIFICATIONS 506.15 AND 531.04(b), AS MODIFIED BY THE GENERAL SPECIAL PROVISIONS.
- ALL ANCHOR BOLTS, NUTS AND WASHERS SHALL BE GALVANIZED.
- BEARING SURFACES MARKED "F" SHALL BE FINISH IN ACCORDANCE WITH AASHTO DIVISION II, SECTION 11.4.6.

VERMONT AGENCY OF TRANSPORTATION  
PROPOSED IMPROVEMENT BRIDGE PROJECT  
TOWN OF PUTNEY, COUNTY OF WINDHAM  
US RT. 5 FAS (MAJOR COLLECTOR), BRIDGE 19A

**STEEL ROCKER BEARING DETAIL**

**AMSCOT**

STRUCTURAL PRODUCTS CORP.  
DOVER, NJ

JOB # 3383

SCALE: N.T.S.	CHECKED: B.F.	DRAWN BY: C.A.M.
DATE: 1/29/10		REVISION: A

FOR: J.A. MCDONALD, INC.

DWG NO: JAM10A1RA SHEET NO. 1 OF 3