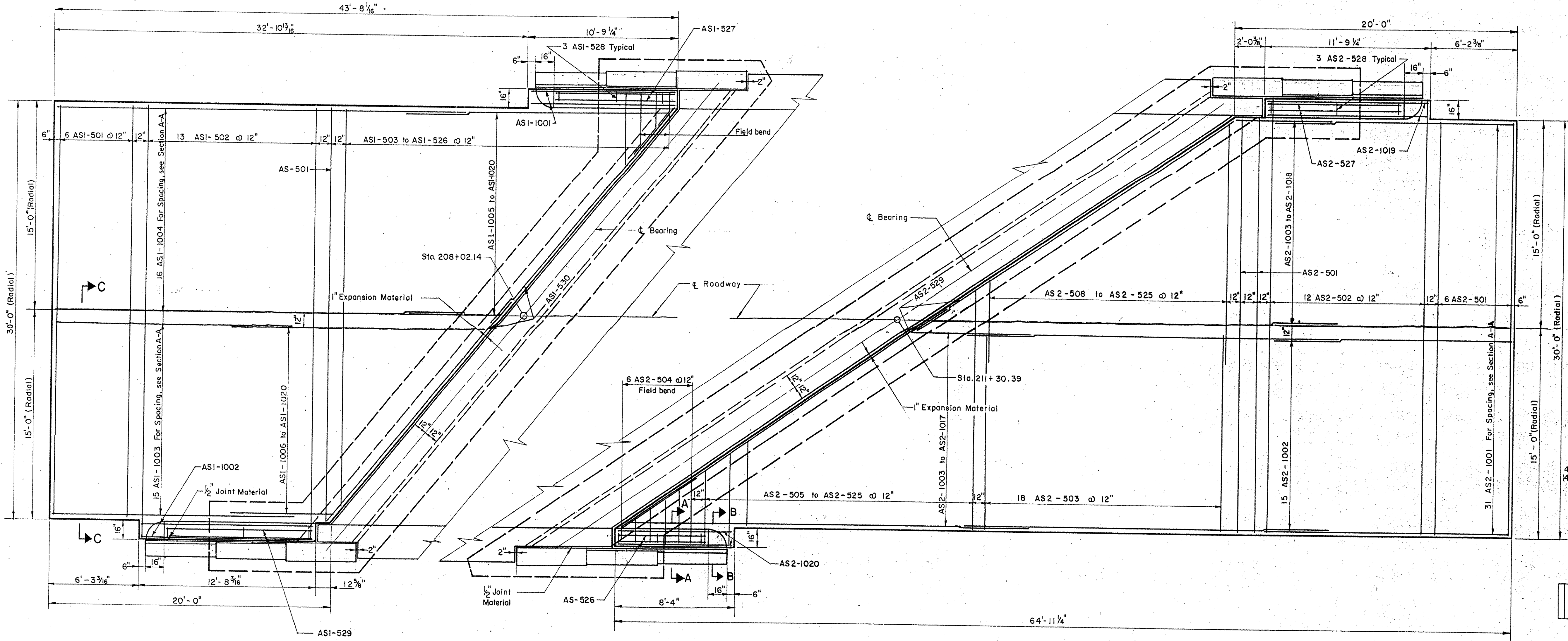


B.P.R. DIV. NO.	STATE	PROJECT NO.	SHEET NO.	TOTAL SHEETS
I	VT.	I 91-1 (10)	126	328

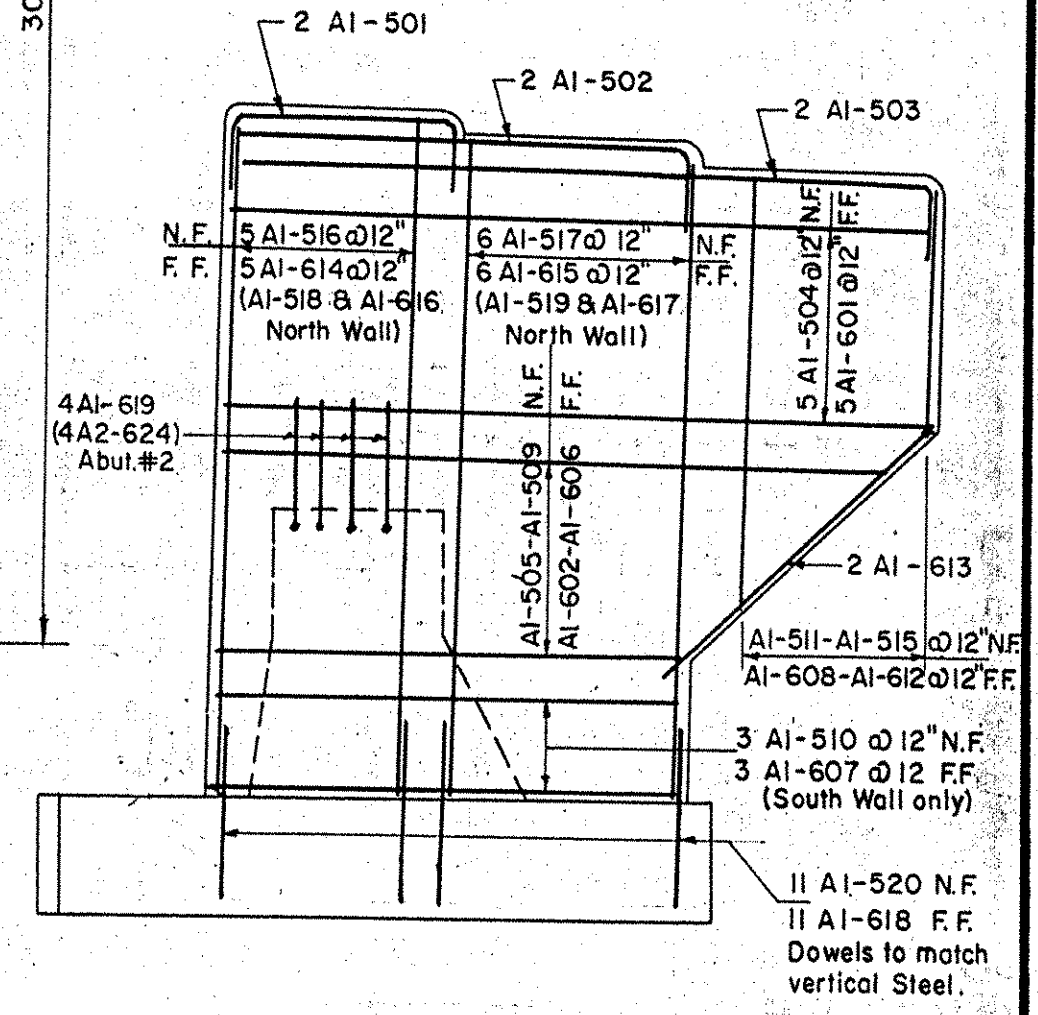


APPROACH SLAB ABUTMENT NO. 1

Scale: 1/4" = 1'-0"

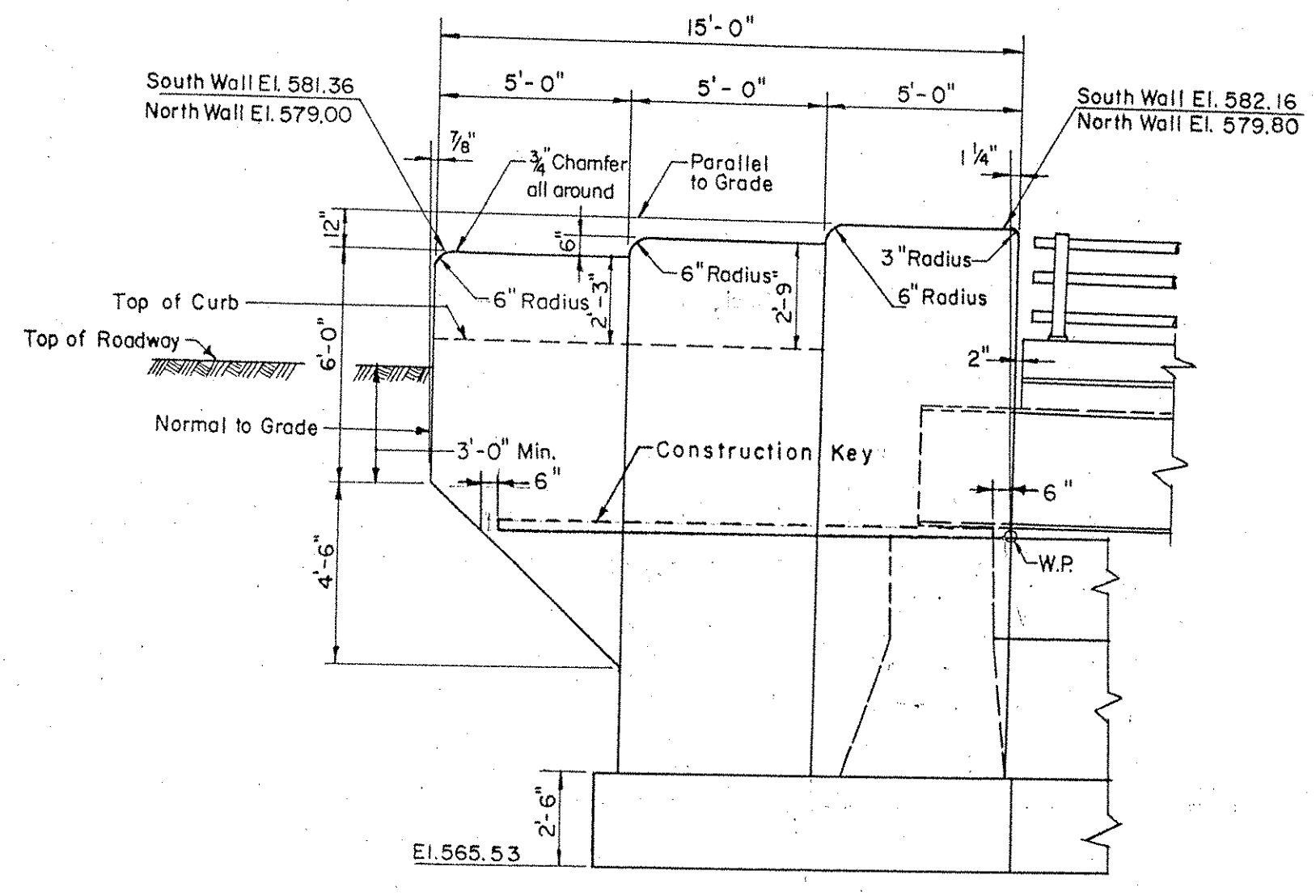
APPROACH SLAB ABUTMENT NO. 2

Scale: 1/4" = 1'-0"
For Sections A-A & B-B, see Standard Sheet SB-AS 45° skew 57.



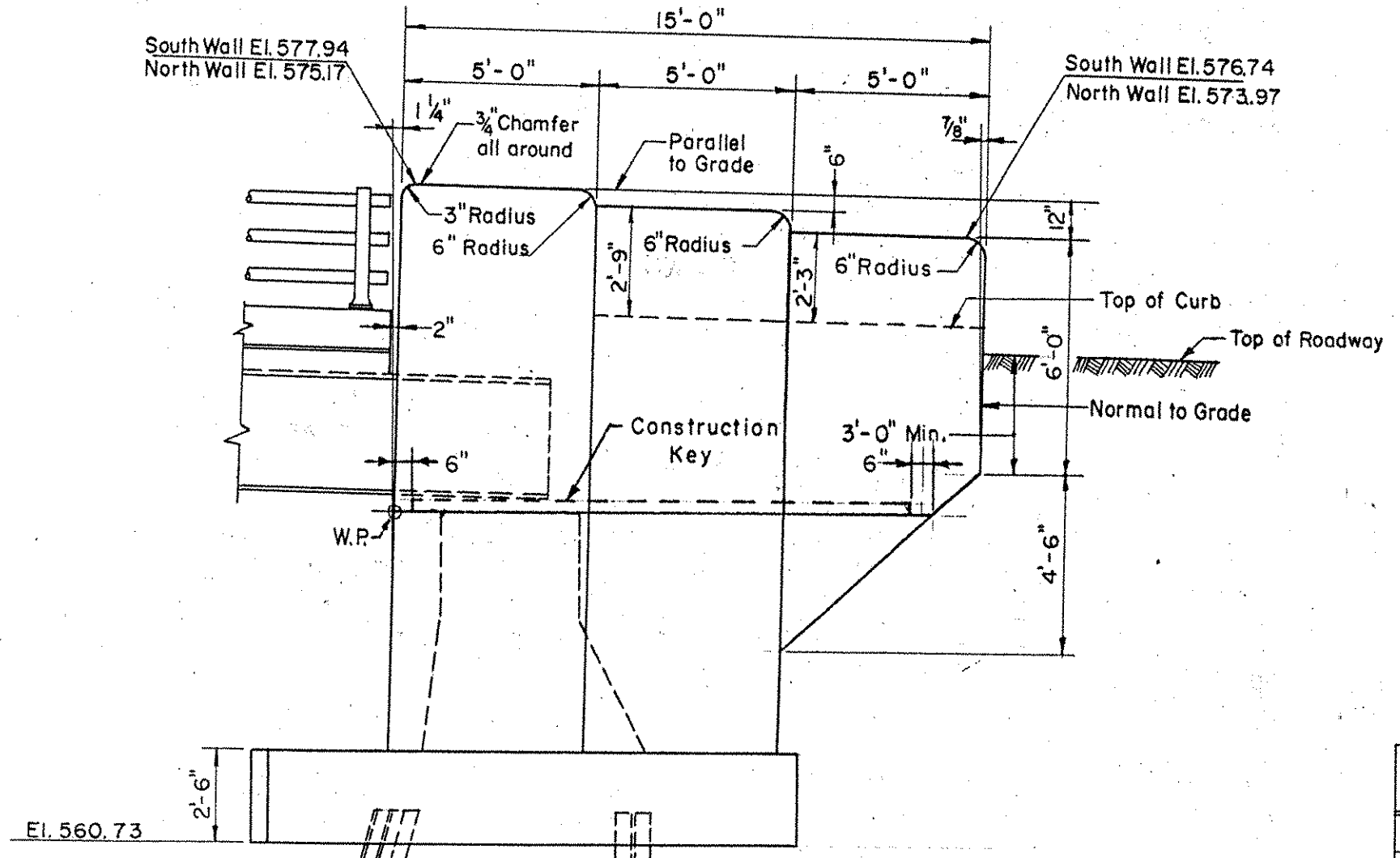
TYPICAL WINGWALL REINFORCING

Scale: 1/4" = 1'-0"
Note: South Wall Abutment #1 shown, North Wall as noted. For Abutment #2, bars are prefixed "A2".



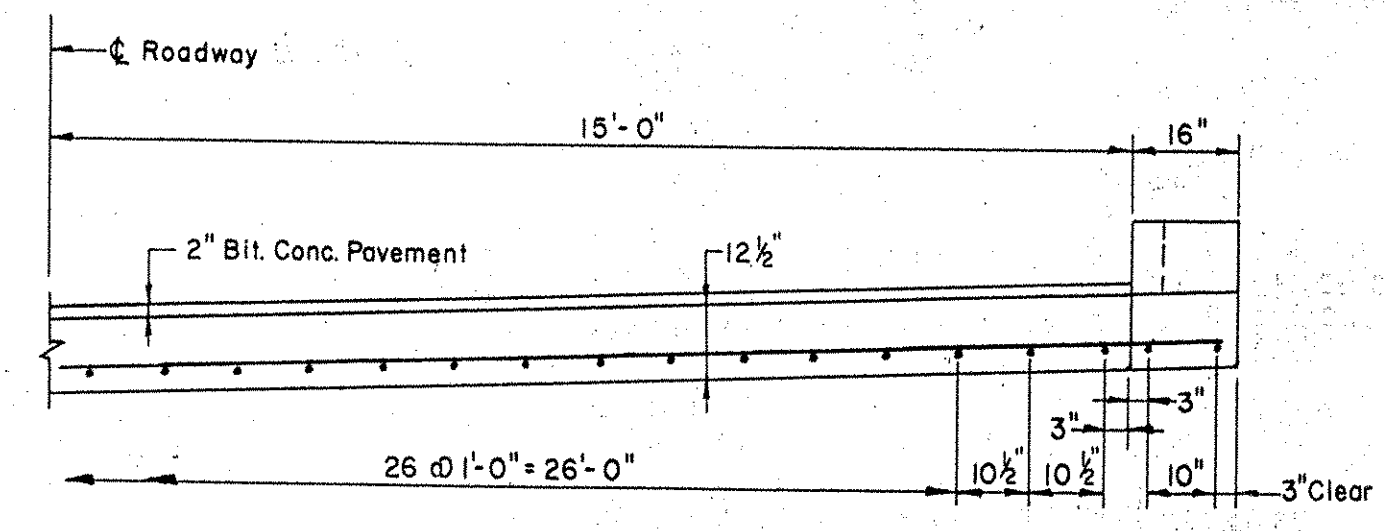
SOUTH WALL ABUTMENT NO. 1
NORTH WALL ABUTMENT NO. 1 (SIMILAR)

Scale: 1/4" = 1'-0"



SOUTH WALL ABUTMENT NO. 2
NORTH WALL ABUTMENT NO. 2 (SIMILAR)

Scale: 1/4" = 1'-0"



SECTION C-C

Scale: 3/8" = 1'-0"

ESTIMATED QUANTITIES

ITEM NO	DESCRIPTION	UNIT	APPROACH SLABS (2)			
			NET	OVER-RUN	TOTAL	FINAL
361-B	Bituminous Concrete Pavement for Bridge Slabs	Ton	2.8	✓	4	29.1
401-B	Concrete, Class 'B' (Mod.)	C.Y.	9.0	✓	9.0	
402	Reinforcing Steel	Lbs.	See Reinforc			
556-C	Granite Bridge Curb (Type 1)	L.F.	See General P			

PUTNEY - BRIDGE 19A
NH F019-1(15)
SHEET NO. 73 OF 75
FOR REFERENCE ONLY

IM 091-1(31)
This sheet for information only
BR 17
APPROACH SLAB

STATE OF VERMONT DEPARTMENT OF HIGHWAYS	
INTERSTATE PROJECT in the town of PUTNEY	
INTERSTATE	STA. 1200 + 24.70
UNDER	
U.S. ROUTE 5 (REL.)	STA. 209 + 52.98
THE CLARKESON ENGINEERING CO. INC. CONSULTING ENGINEERS	
BOSTON MASSACHUSETTS	
SURVEYED BY	CHECKED BY D.S.
DRAWN BY	IN CHARGE
PROJECT NO. I 91-1(10)	SHEET 126 OF 328