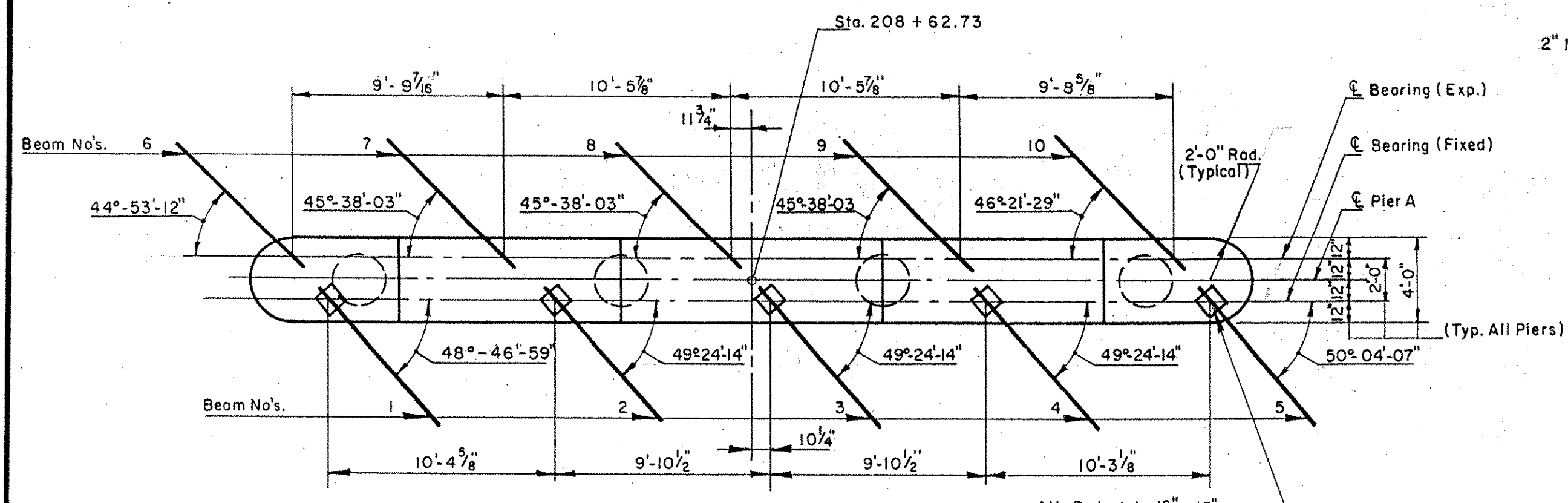
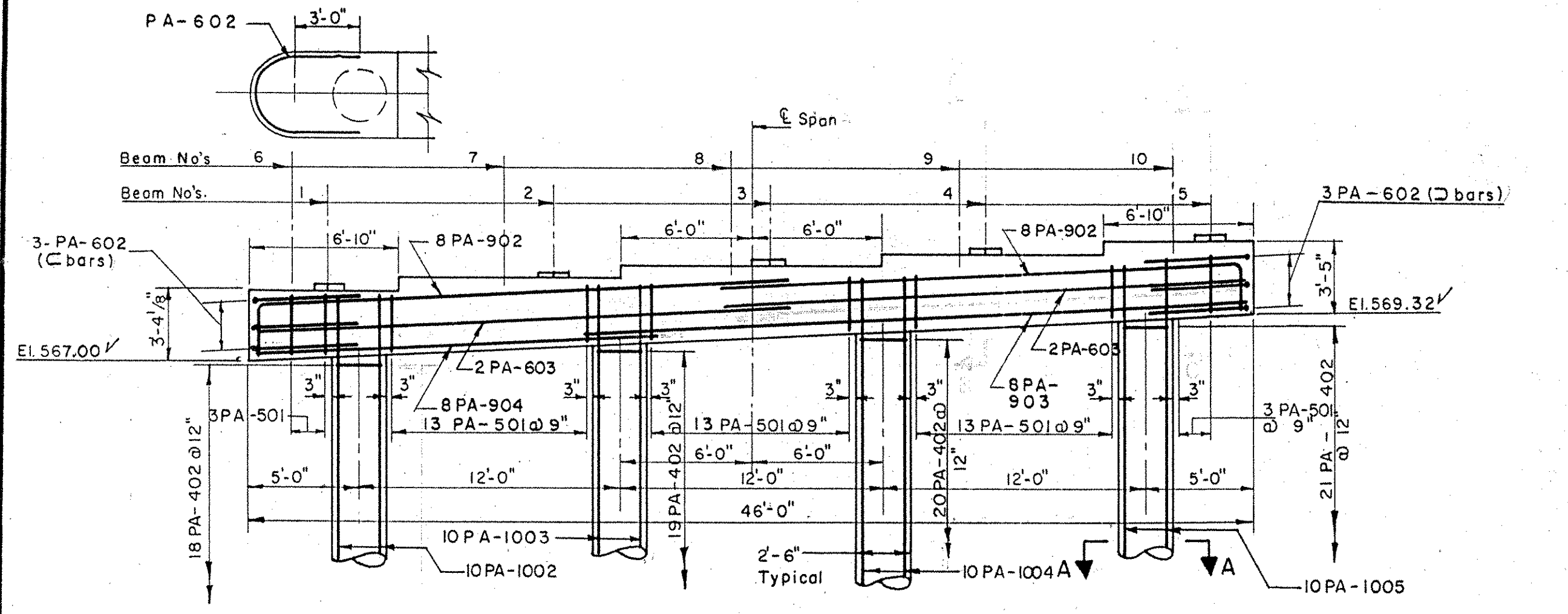


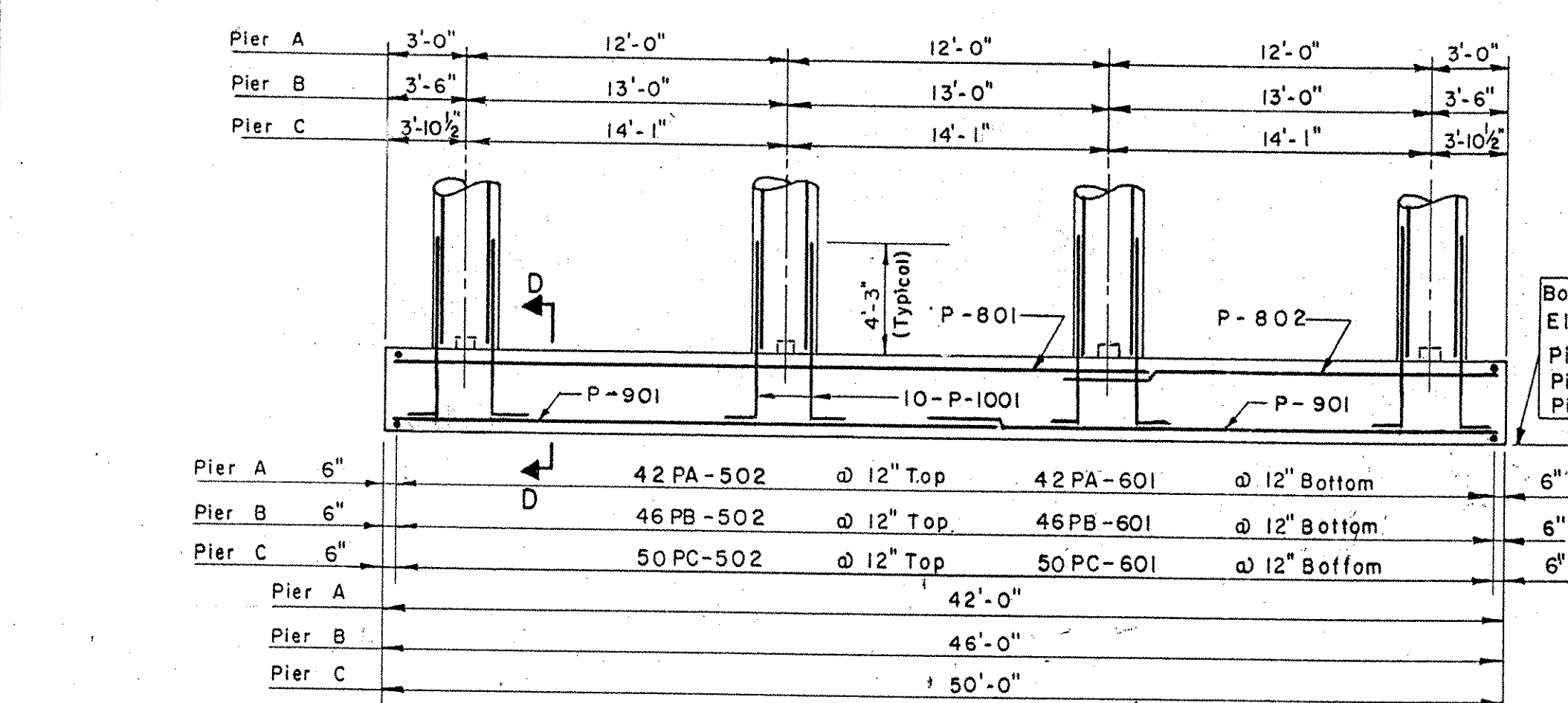
B.P.R. DIV. NO.	STATE	PROJECT NO.	SHEET NO.	TOTAL SHEETS
1	VT.	I 91-1(10)	125	328



PLAN PIER A  
SCALE: 3/16" = 1'-0"

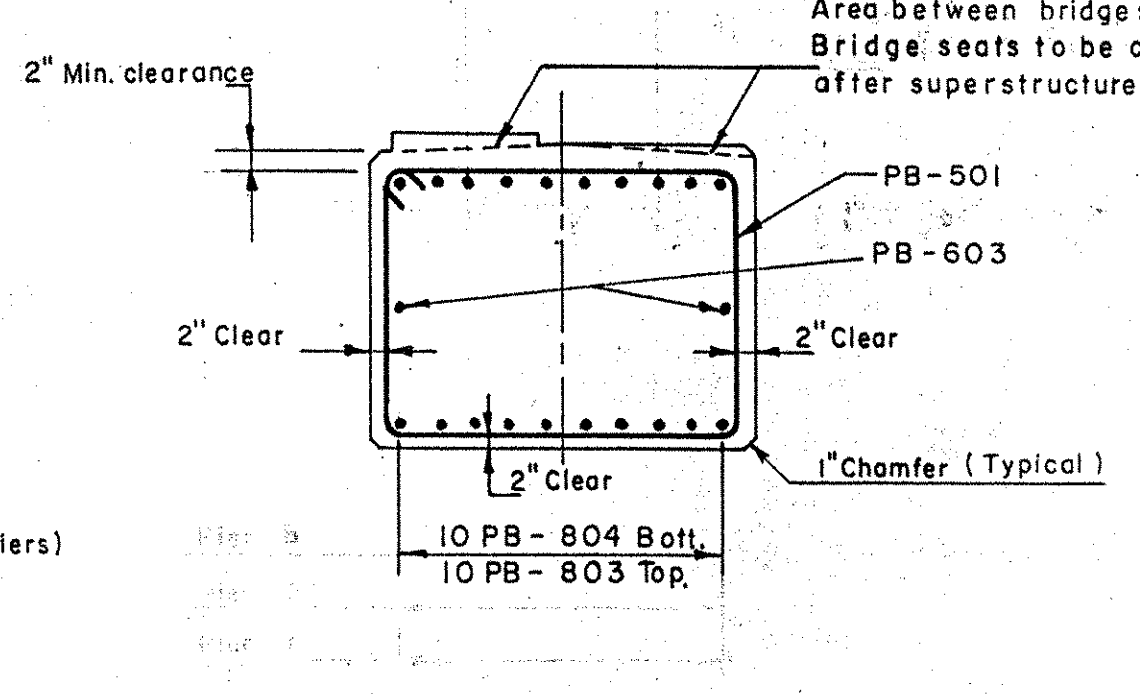


ELEVATION PIER A  
SCALE: 3/16" = 1'-0"

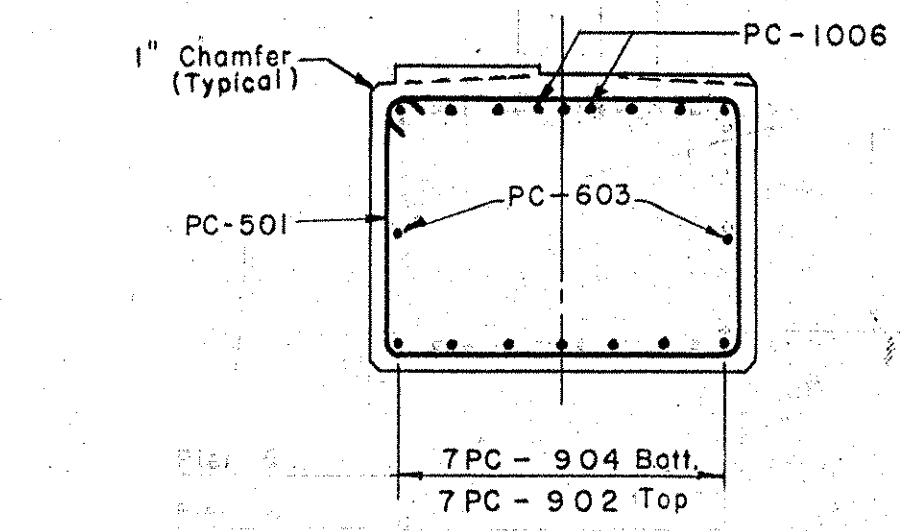


FOOTINGS  
SCALE: 3/16" = 1'-0"

ITEM NO.	DESCRIPTION	UNIT	PIER A				PIER B				PIER C			
			NET	OVER-RUN	TOTAL	FINAL	NET	OVER-RUN	TOTAL	FINAL	NET	OVER-RUN	TOTAL	FINAL
107	Structure Excavation	C.Y.	+45	=15	=60	137	+27	=13	=40	131	+89	=16	=105	110
401-B	Concrete Class B (Mod.)	C.Y.	+79	=4	=83	97	+85	=4	=89	102	+90	=4	=94	92
402	Reinforcing Steel	LBS												
407	Asphaltic Asbestos Coating	S.Y.	20	=0	20	20	22	=0	22	22	23	=0	23	23

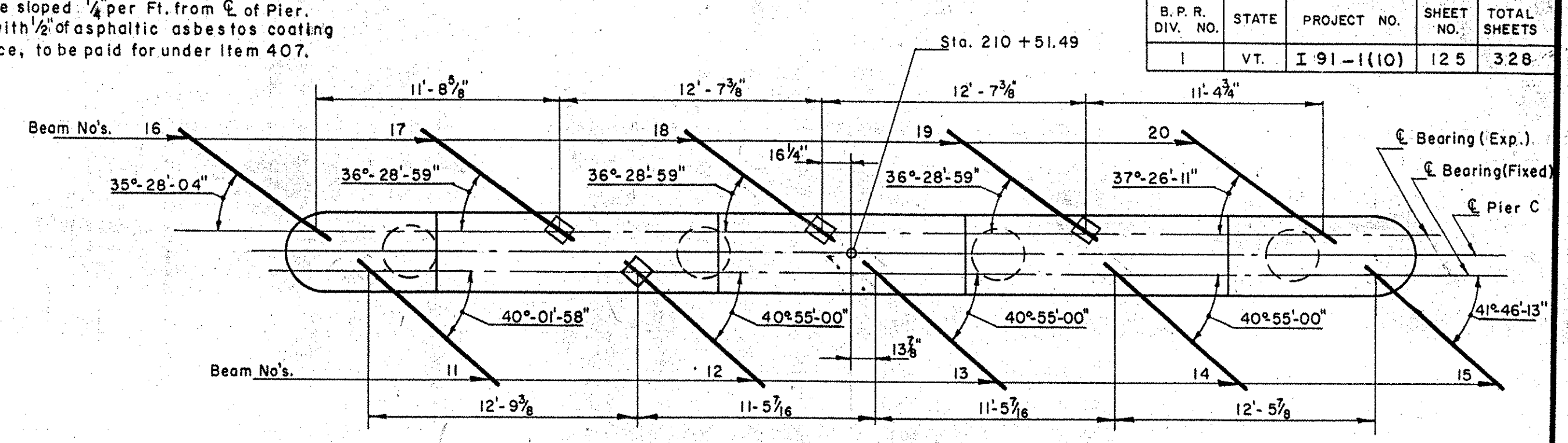


SECTION B-B  
SCALE: 1/2" = 1'-0"

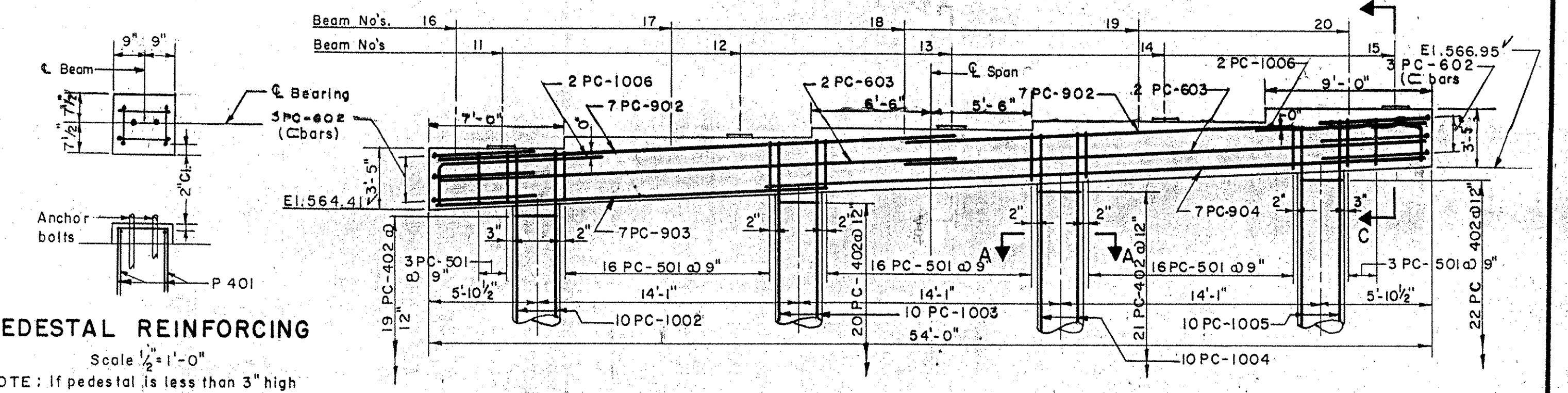


SECTION C-C  
SCALE: 1/2" = 1'-0"

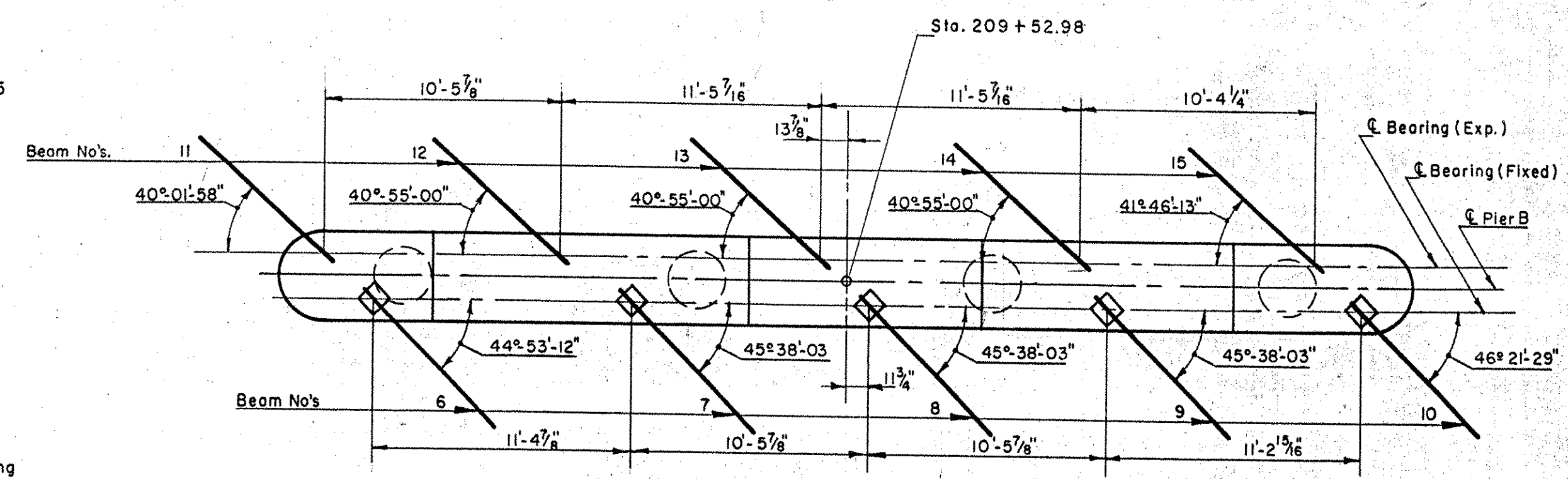
PEDESTAL REINFORCING  
Scale 1/2" = 1'-0"  
NOTE: If pedestal is less than 3" high omit reinforcing.



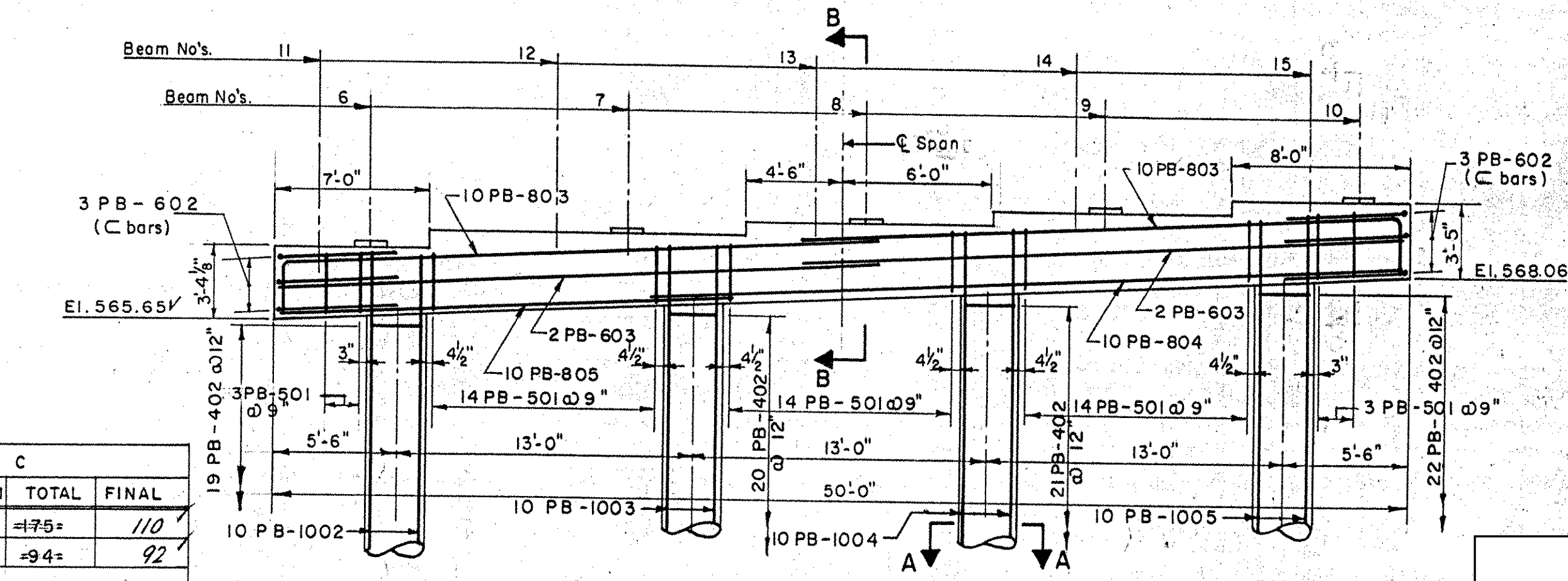
PLAN PIER C  
SCALE: 3/16" = 1'-0"



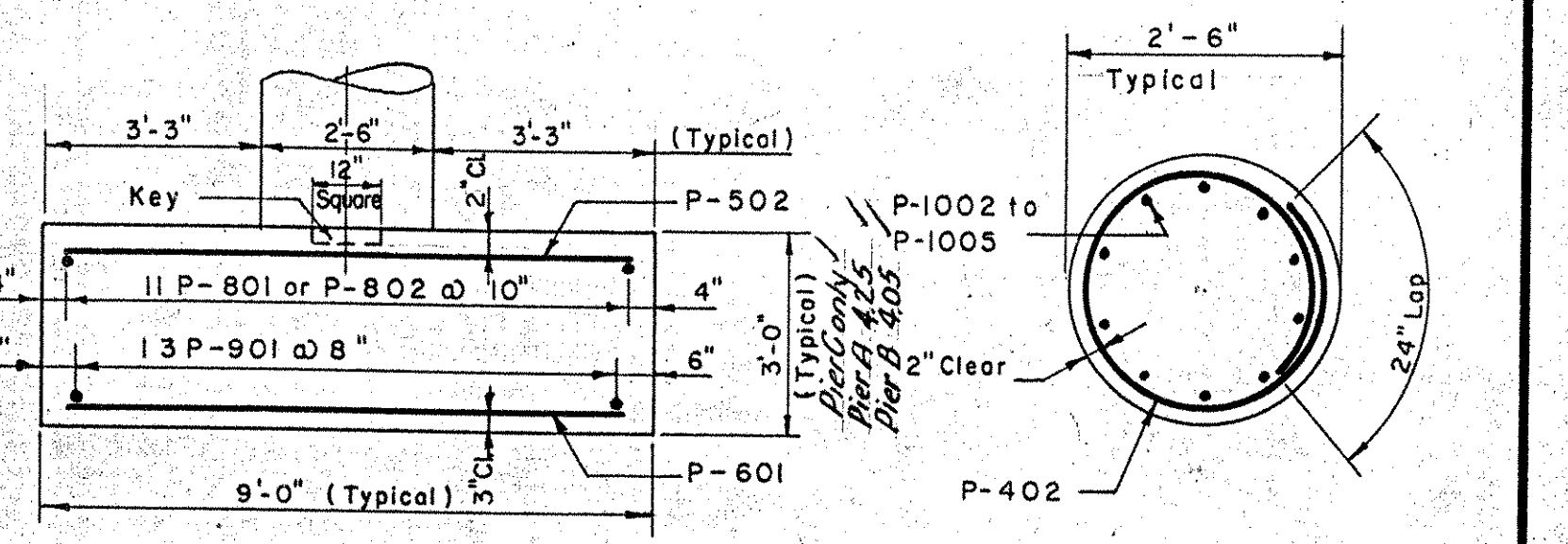
ELEVATION PIER C  
SCALE: 3/16" = 1'-0"



PLAN PIER B  
SCALE: 3/16" = 1'-0"



ELEVATION PIER B  
SCALE: 3/16" = 1'-0"



SECTION D-D  
SCALE: 3/16" = 1'-0"  
Max. Bearing Pressure 4260 #/sq. ft.

SECTION A-A  
NOT TO SCALE

BEAM NO.	PIER A	PIER B	PIER C	BEAM NO.	PIER A	PIER B	PIER C	BEAM NO.
1	570.73	570.34	569.28	569.01	11	567.83	567.83	16
2	571.34	570.93	569.92	569.60	12	568.50	568.46	17
3	571.93	571.54	570.51	570.24	13	569.10	569.11	18
4	572.51	572.16	571.10	570.88	14	569.70	569.77	19
5	573.13	572.74	571.73	571.47	15	570.37	570.37	20

IM 091-1(31)  
This sheet for information only  
**BR 17**

PUTNEY - BRIDGE 19A  
NH F019-1(15)  
SHEET NO. 72 OF 75  
FOR REFERENCE ONLY

PIERS A, B AND C  
STATE OF VERMONT  
DEPARTMENT OF HIGHWAYS  
INTERSTATE PROJECT in the town of  
PUTNEY  
INTERSTATE STA. 1200 + 24.70  
UNDER  
U.S. ROUTE 5 (REL.) STA. 209 + 52.98  
THE CLARKESON ENGINEERING CO. INC.  
CONSULTING ENGINEERS  
BOSTON MASSACHUSETTS  
SURVEYED BY: J.V.B. CHECKED BY: D.M.S. SCALE AS NOTED  
DRAWN BY: D.E.S. IN CHARGE: J.V.B. DATE: 10/22/97